

Port Lands Flood Protection Construction Liaison Committee Meeting #2

June 7, 2018



WATERFRONToronto

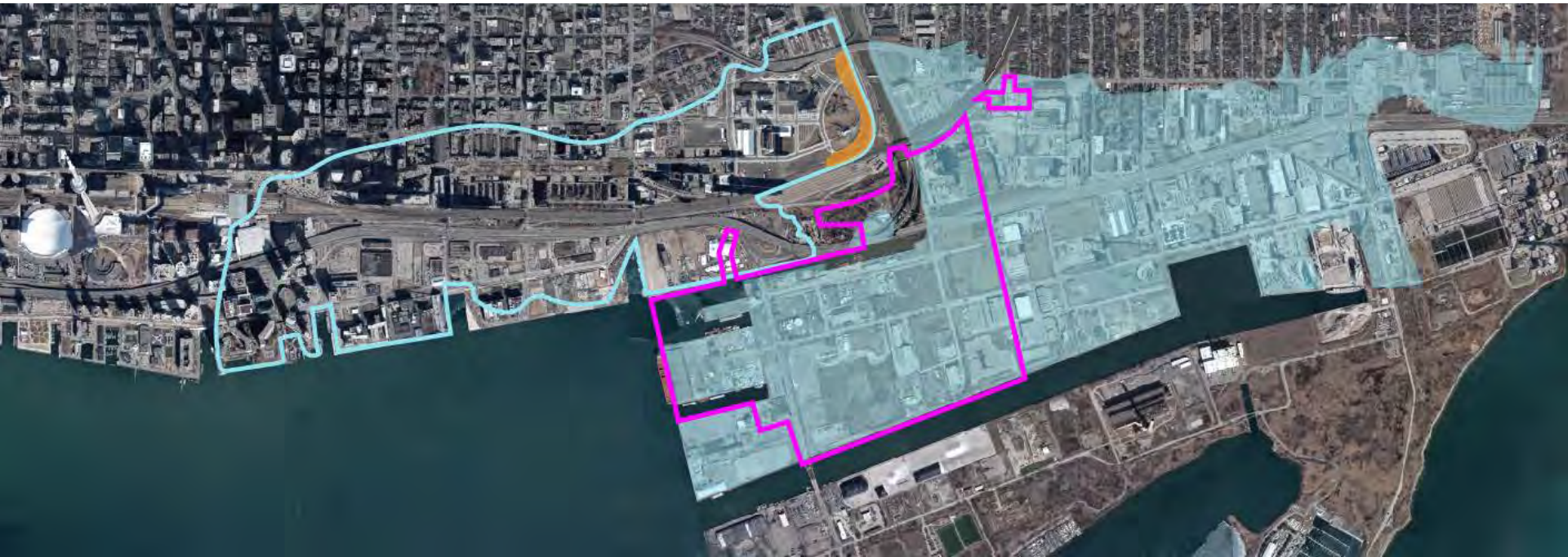
Agenda



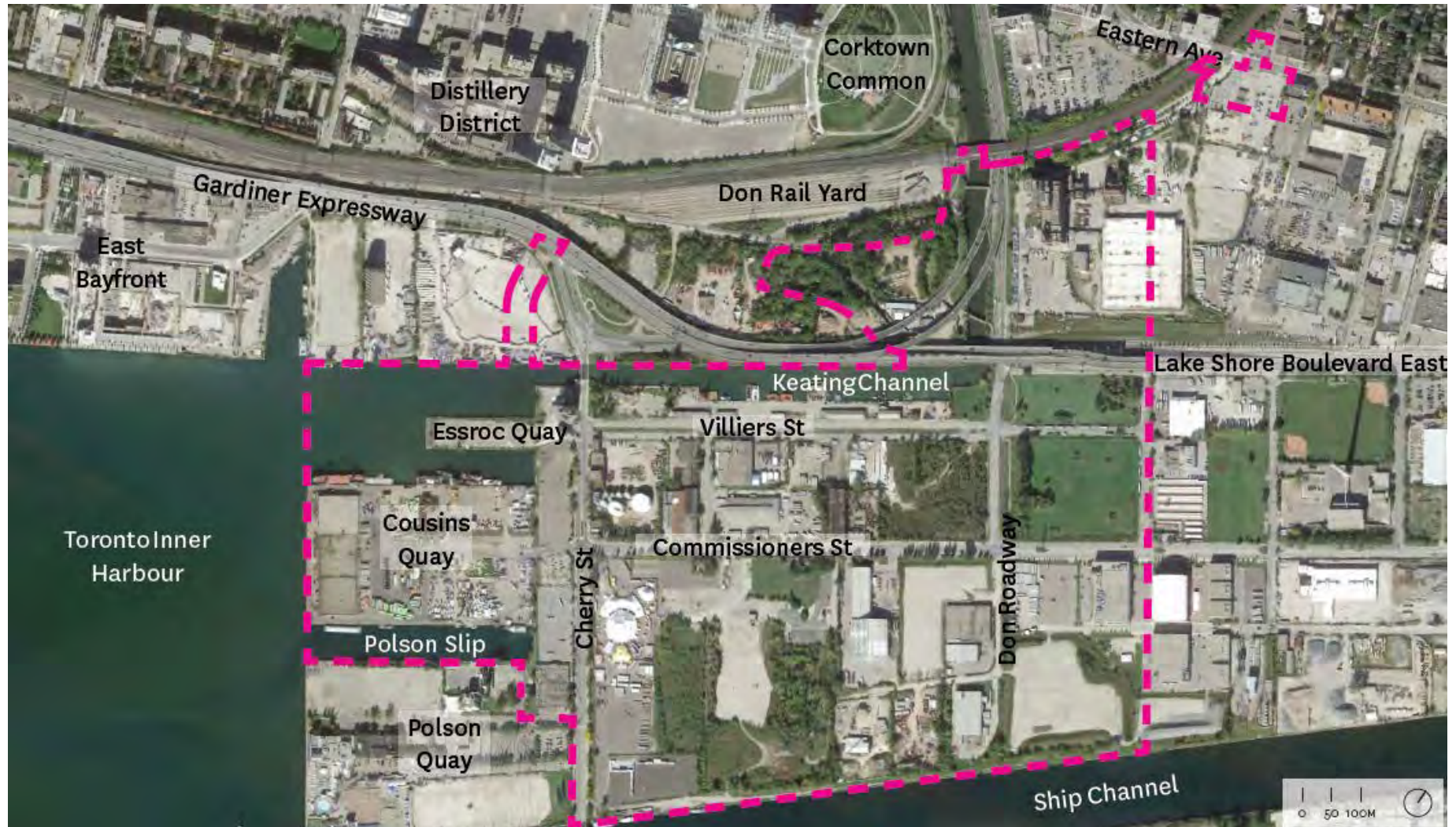
1. Welcome and Introductions
2. Project Overview
3. Construction Update: Cherry Street Stormwater and Lakefilling
4. Construction Update: Port Lands Flood Protection
5. Traffic Management Plan (Port Lands Flood Protection)
6. Discussion and Feedback

Project Overview

Port Lands Flood Protection



Project Area – Existing Conditions



Project Area – Future Conditions

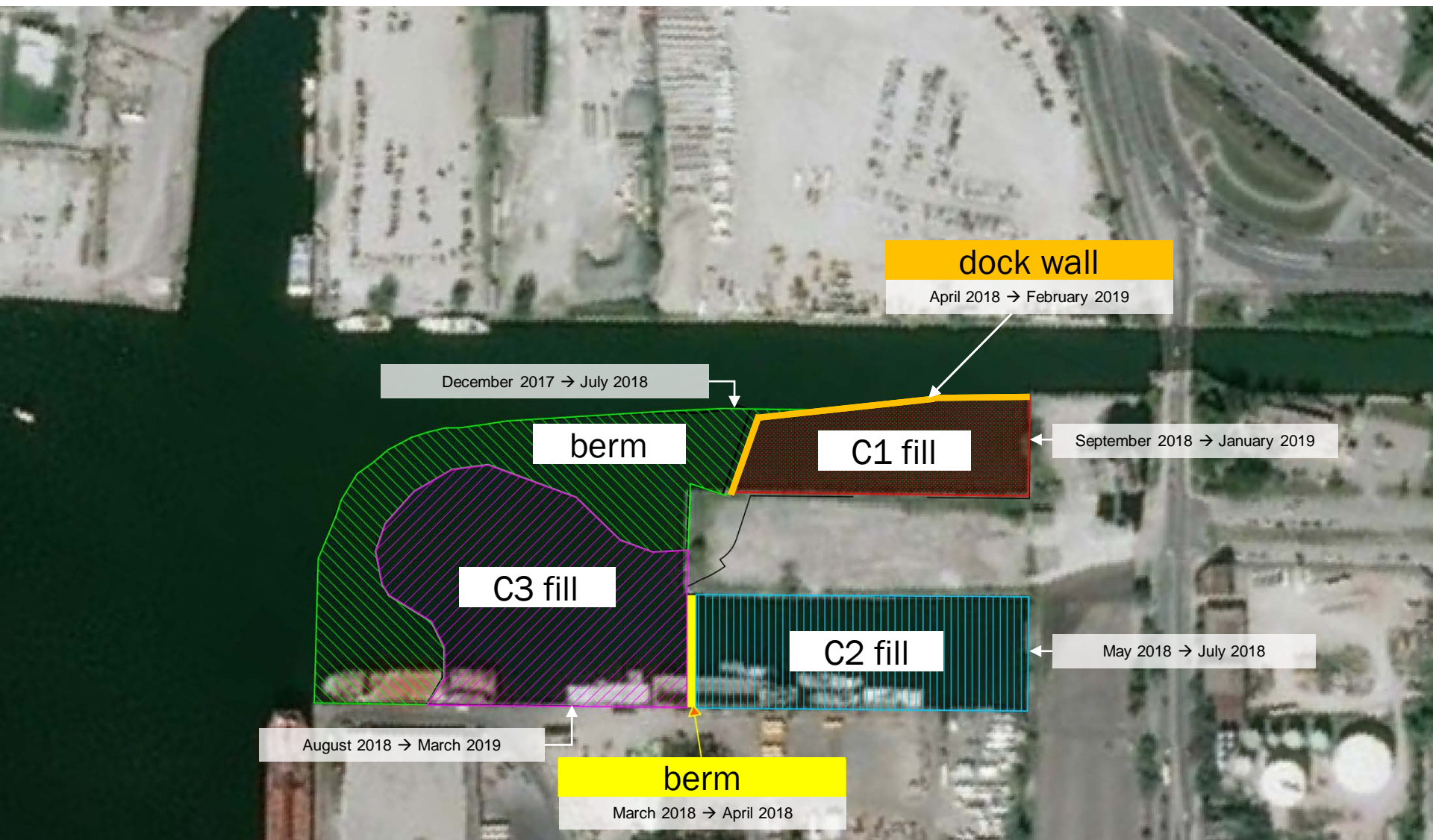


Construction Update: Cherry Street Stormwater and Lakefilling

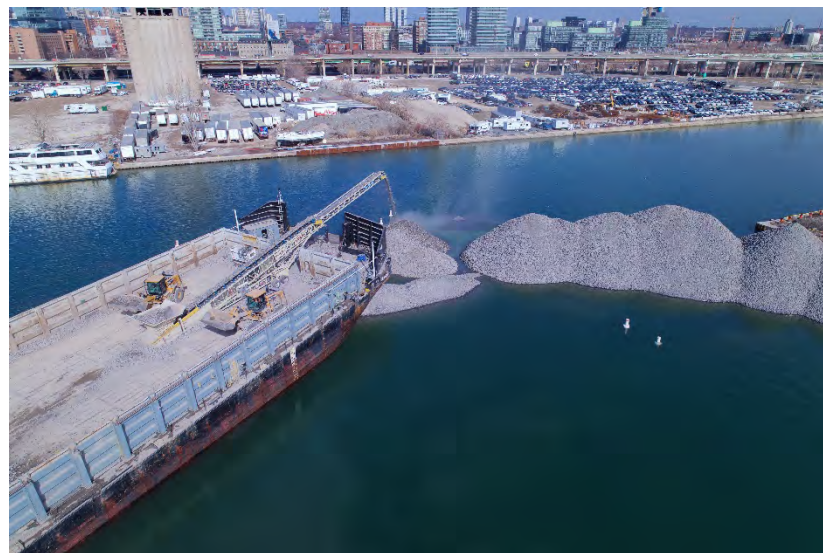
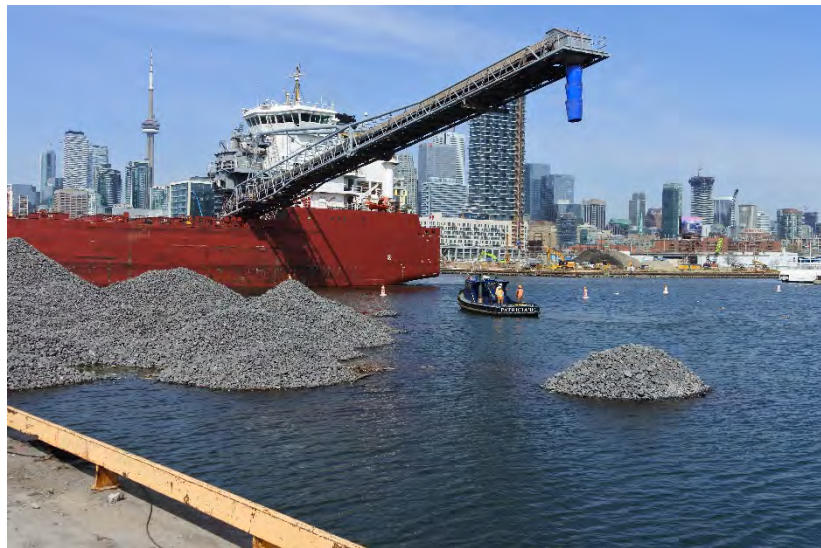


WATERFRONToronto

Construction Schedule



Construction Update: Revetment Berm



Construction Update: Inner Confinement Berm



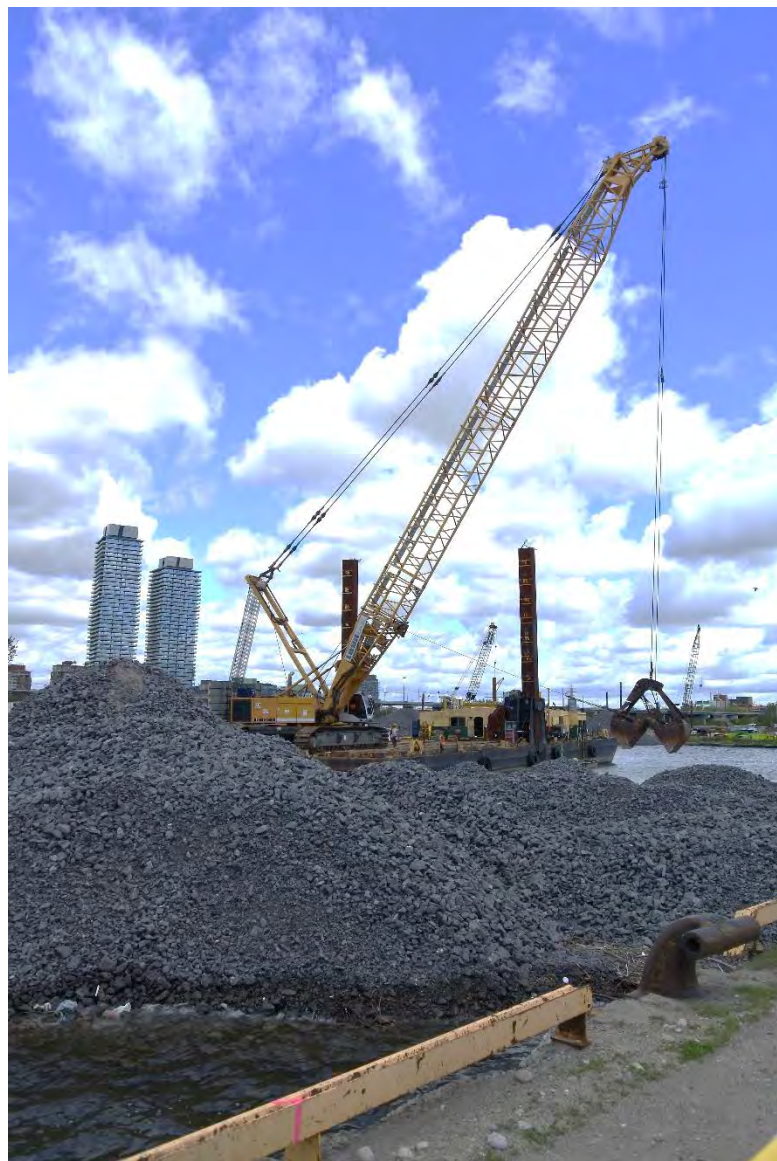
Construction Update: Dock Wall



Upcoming Construction: Lakefilling



Upcoming Construction: Marine Landscaping



Traffic Management: Haul Route

TRUCK DELIVERIES:

- May 2018 – March 2019
- Over 200 truck-loads / day
- Between 6:00AM-5:00PM
- Crews will aim to restrict deliveries during peak travel times
- Some deliveries may be unloaded during nights and weekends – will comply with City noise standards



Traffic Management: On-site Truck Staging

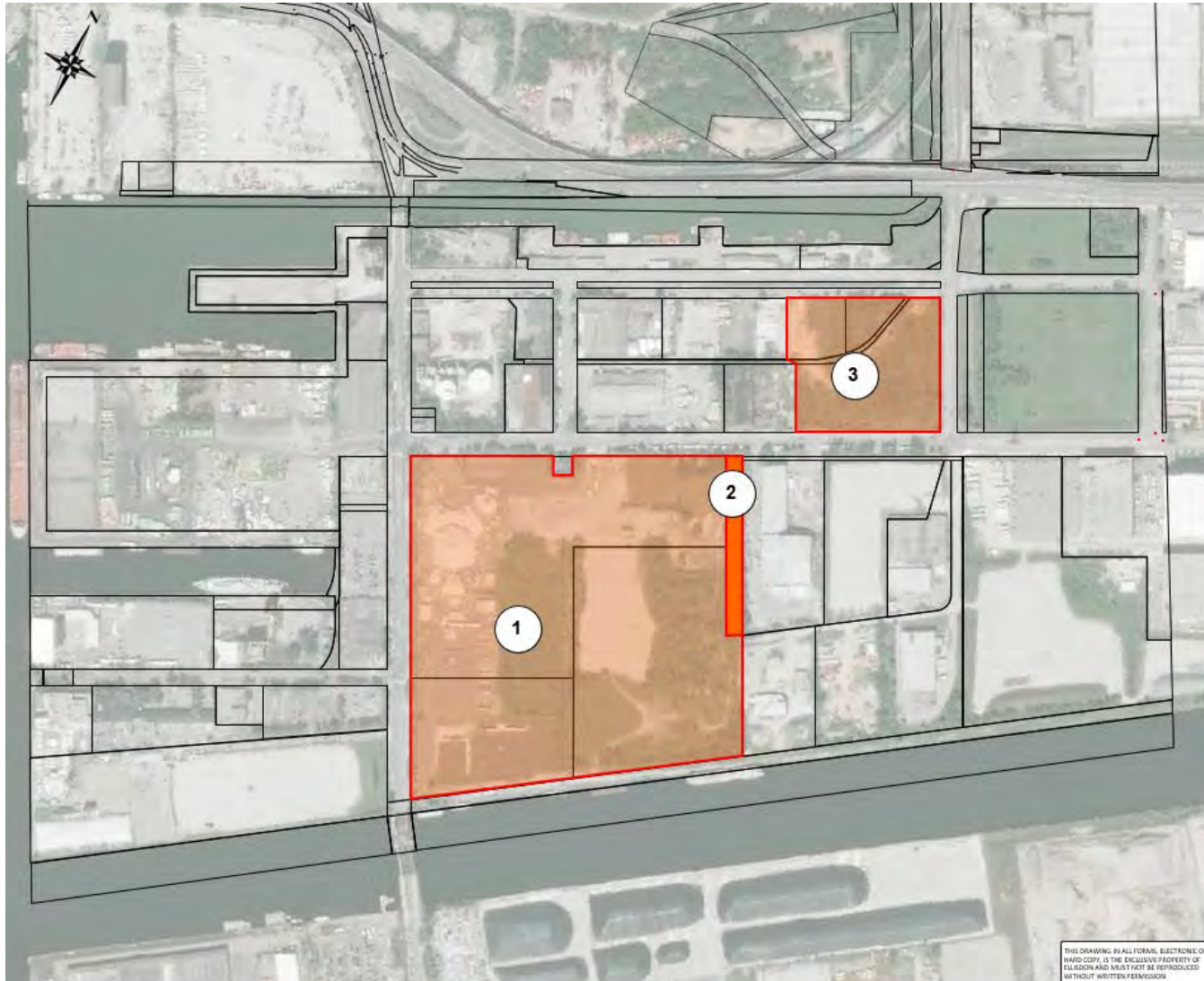


Construction Update: Port Lands Flood Protection



WATERFRONToronto

Upcoming Construction: July-September



Upcoming Construction: Tree Clearing, Demolition & Interim Separation Structure

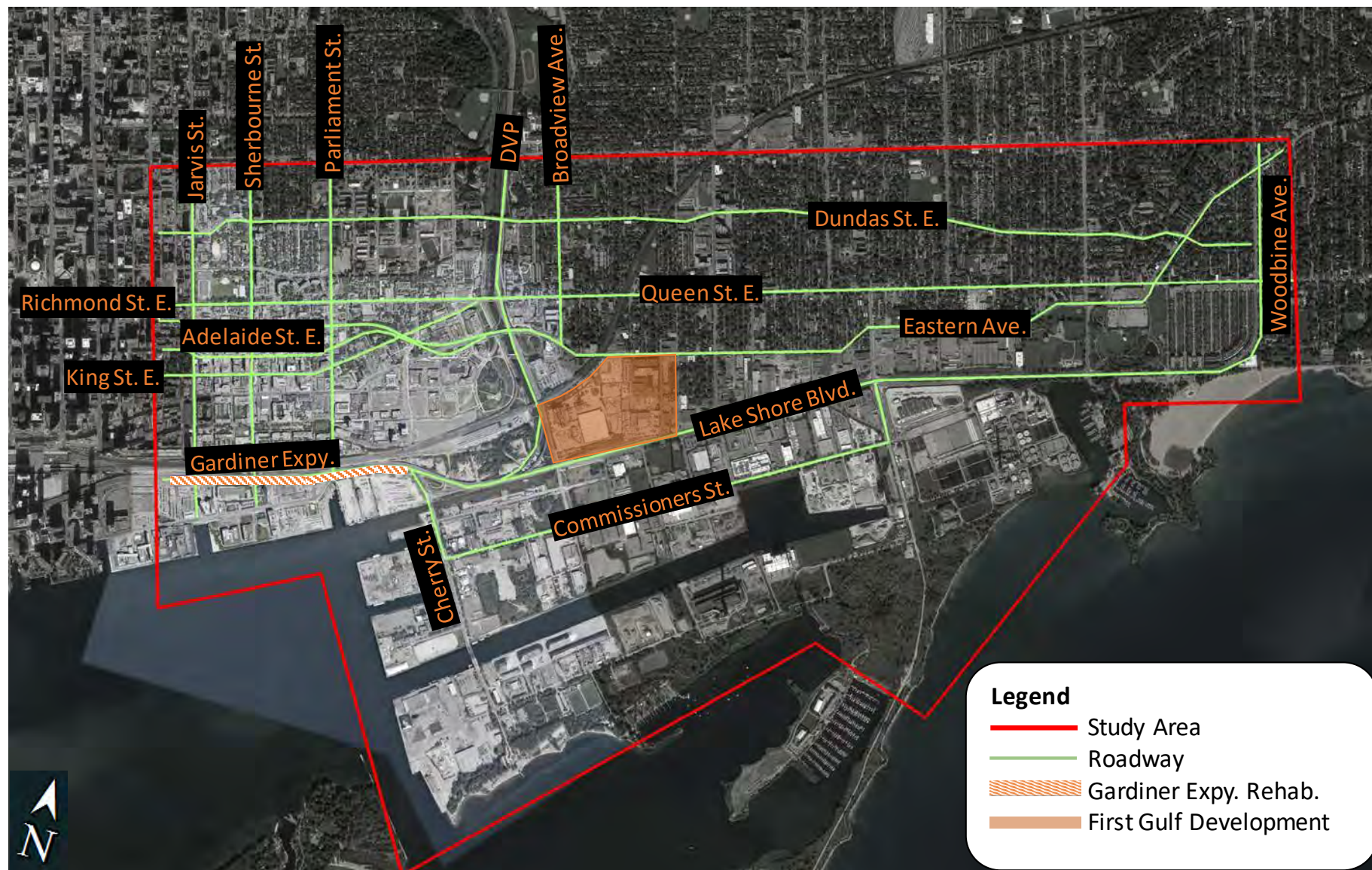


Traffic Management Plan: Port Lands Flood Protection

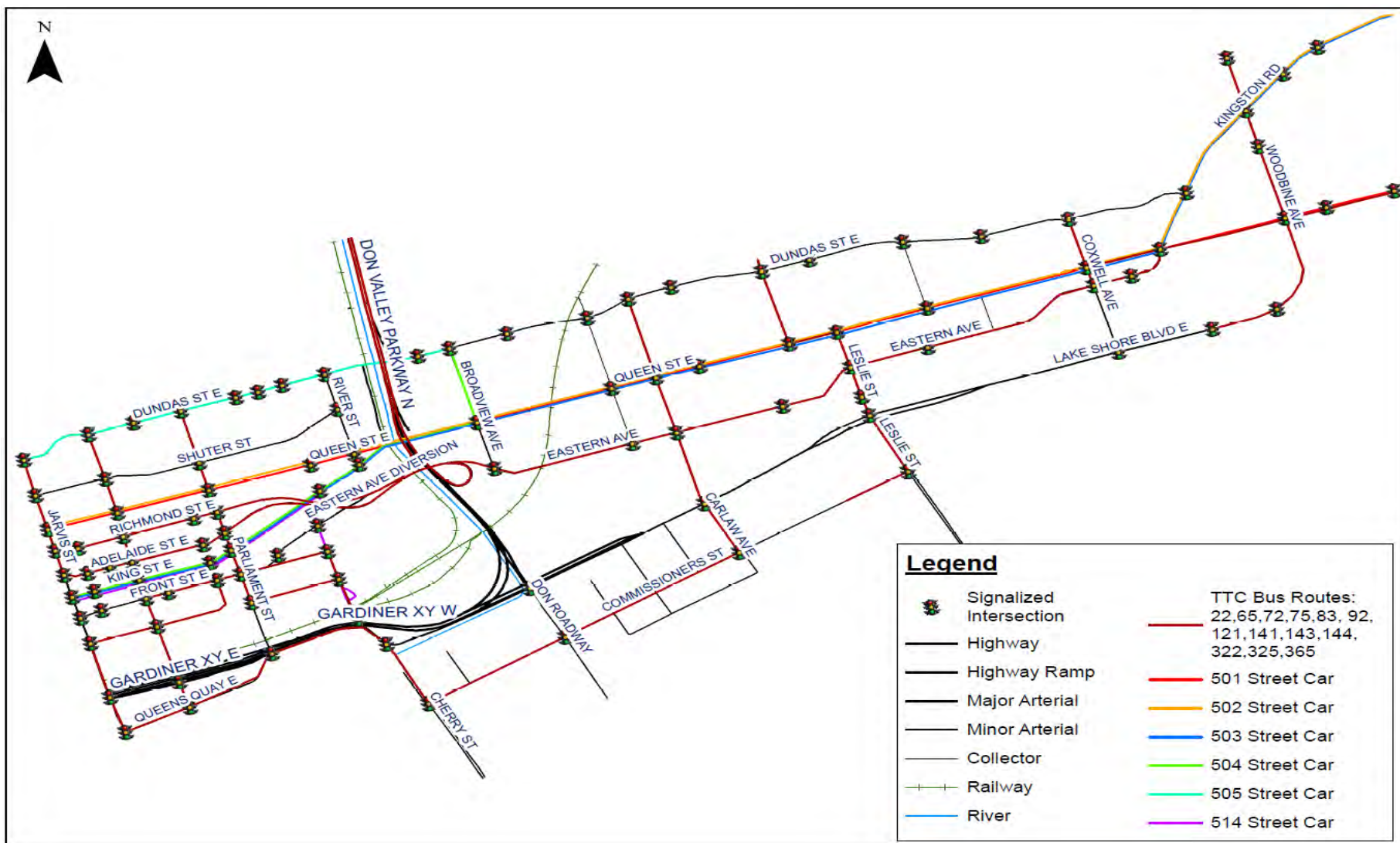


WATERFRONToronto

Traffic Management Plan: Study Area



TTC Routes



Simulation Modelling

Kickoff

- Confirming scope and requirements

EMME macro modelling

- Existing conditions (2018)

EMME macro modelling

- Future demand, including developments

Operations review

- Major arterials
- Transit
- Emergency vehicles

Data collection

- Traffic volumes
- Signal timing
- Available models
- Travel times

Aimsum micro model calibration / validation

Aimsum micro model

- Closure scenarios
- Detours
- Dynamic traffic assignment

Stakeholder Input

- Trips to/from the business:
 - Roadways
 - Time of day
- Special times for spike in traffic (seasonal or during special events)
- Level of operations that can accommodate as a “worst case scenario”
- Alternative routes and/or time of day during construction

Discussion and Feedback

Join Us

Waterfront Toronto
20 Bay Street, Suite 1310
Toronto, ON M5J 2N8
www.waterfronttoronto.ca



<https://www.youtube.com/user/WaterfrontToronto>



<https://www.facebook.com/WaterfrontToronto>



<https://www.linkedin.com/company/waterfront-toronto>



<https://twitter.com/WaterfrontTO>



WATERFRONTToronto