

City of Toronto + Toronto and Region Conservation

# Tommy Thompson Park Park Entrance Development Project

Waterfront Design Review Panel - 2nd Review

May 17, 2017

DRAFT

**dtah**

**The Entranceway and Pavilion Project seeks to establish a new front door to the Park that is welcoming, engaging, and ecologically sensitive to its context.**

### **The scope of work includes:**

- A serviced park entrance, parking, accommodation for bus (tour/school) turnaround, and;
- A serviced public pavilion / outdoor interpretive area

### **Key opportunities in this work include:**

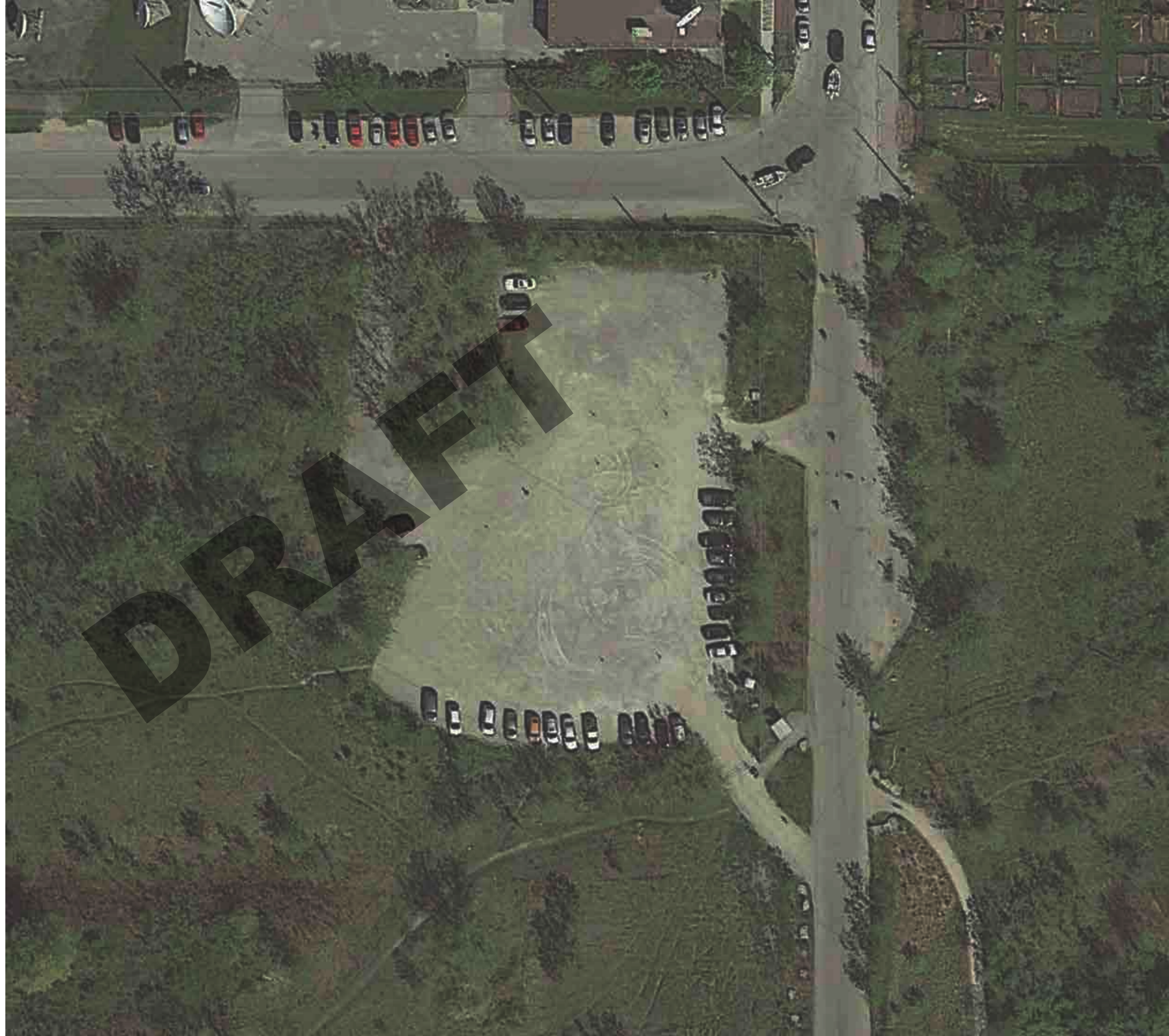
- Establishing the identity of the Park
- Providing visitors with crucial information on the Park and its unique features
- Better connecting the Park to the surrounding pedestrian and bicycle networks
- Protect the existing ecologies that surround the entranceway
- Better defining where cars are welcome and where they are not

# Our work on the Entranceway and Pavilion Project builds upon the previous master planning, architecture and landscape architecture of Tommy Thompson Park.

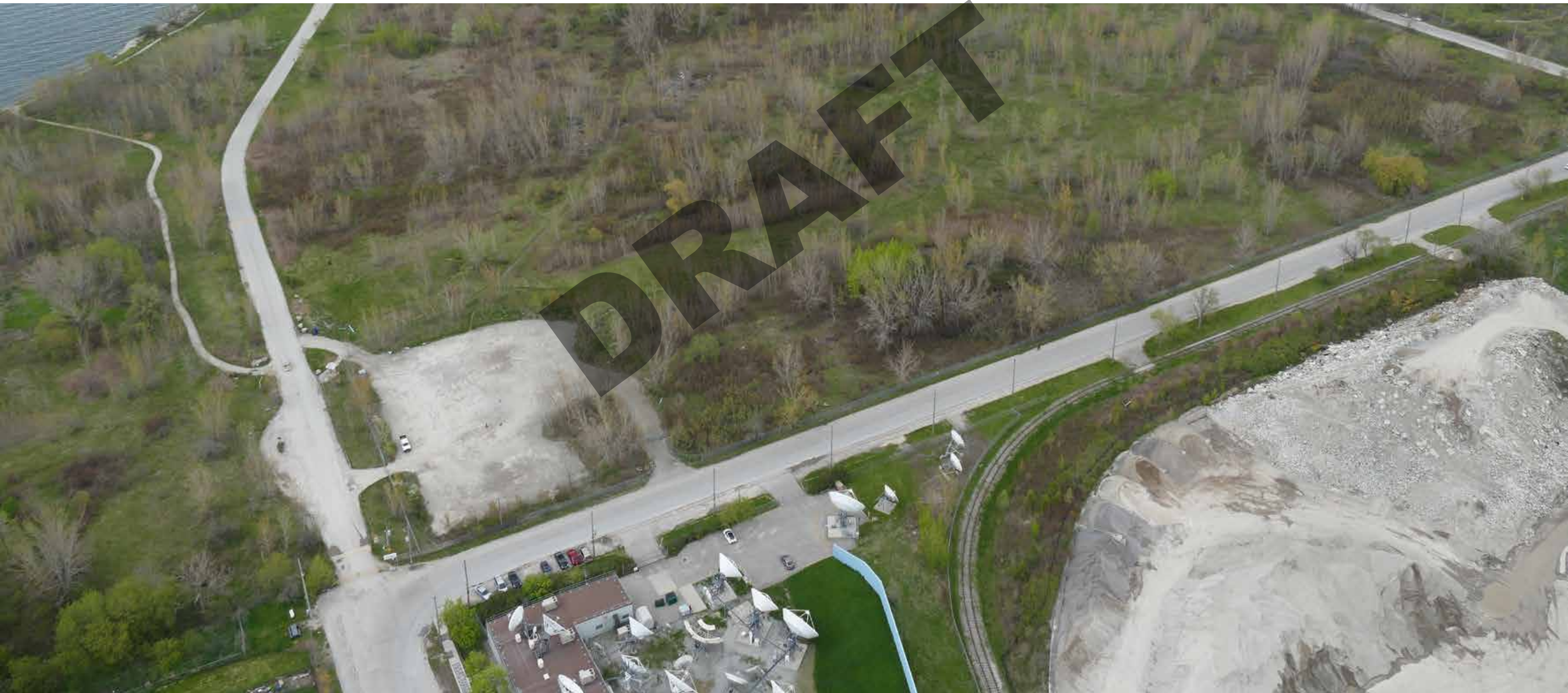
- Tommy Thompson Park Master Plan (1989) and Addendum (1992)
- Tommy Thompson Park Revised Trails Master Plan and Park Infrastructure (2006)
- Lake Ontario Park Master Plan (2008)
- Tommy Thompson Park Master Plan Implementation Projects:
  - Staff Booth (2013)
  - Environmental Shelter (2013)
  - Bird Banding Station (2013)
  - Entranceway Pavilion (concept design 2010, not implemented)
- Urban Wilderness Principles Document (2014)
- Baselands Trails Master Plan (2016)

## Site Understanding

# Existing Conditions



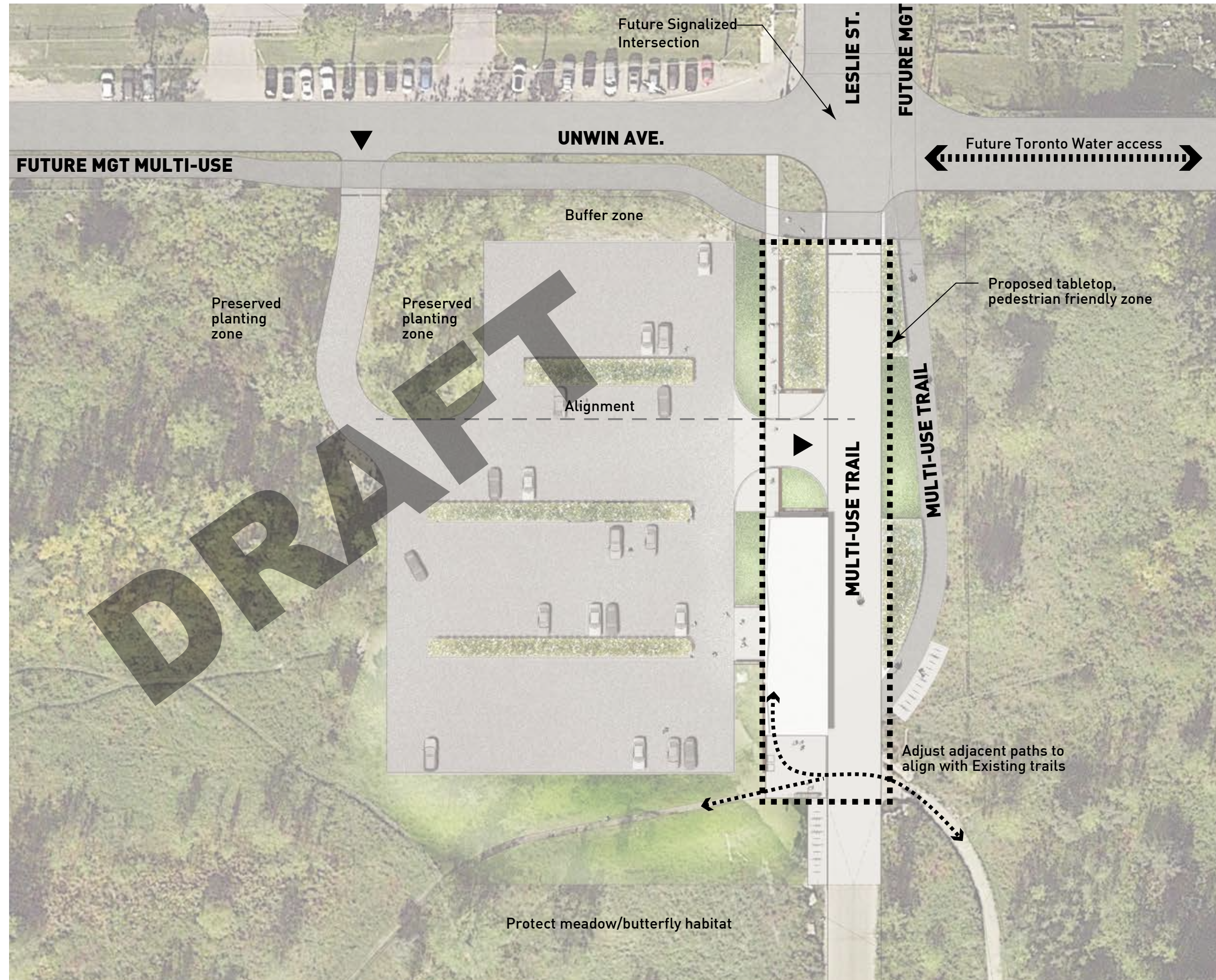
# Existing Conditions



## Site Organization Strategy

# Layout Strategy

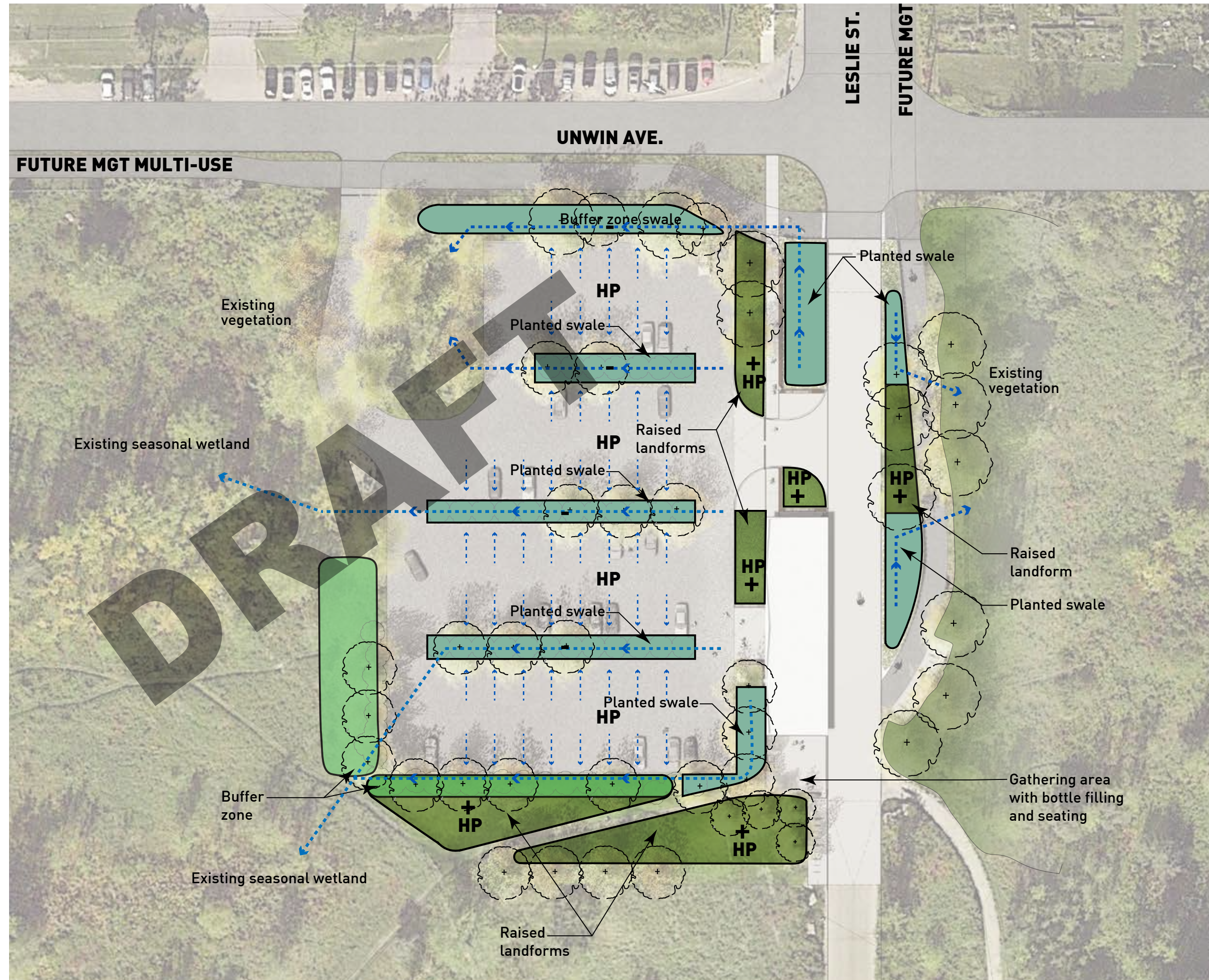
- Provide for future MGT connection along the northern edge of parking lot, with landscape buffer
- Preserve tree stand adjacent to western entrance driveway
- Align vehicular connection to multi-use trail to facilitate bus movements and allow for the removal of the bulb-out
- Establish tabletop at the northern edge of Multi-Use Trail to identify pedestrian-priority zone



## Site Organization Strategy

# Stormwater + Planting

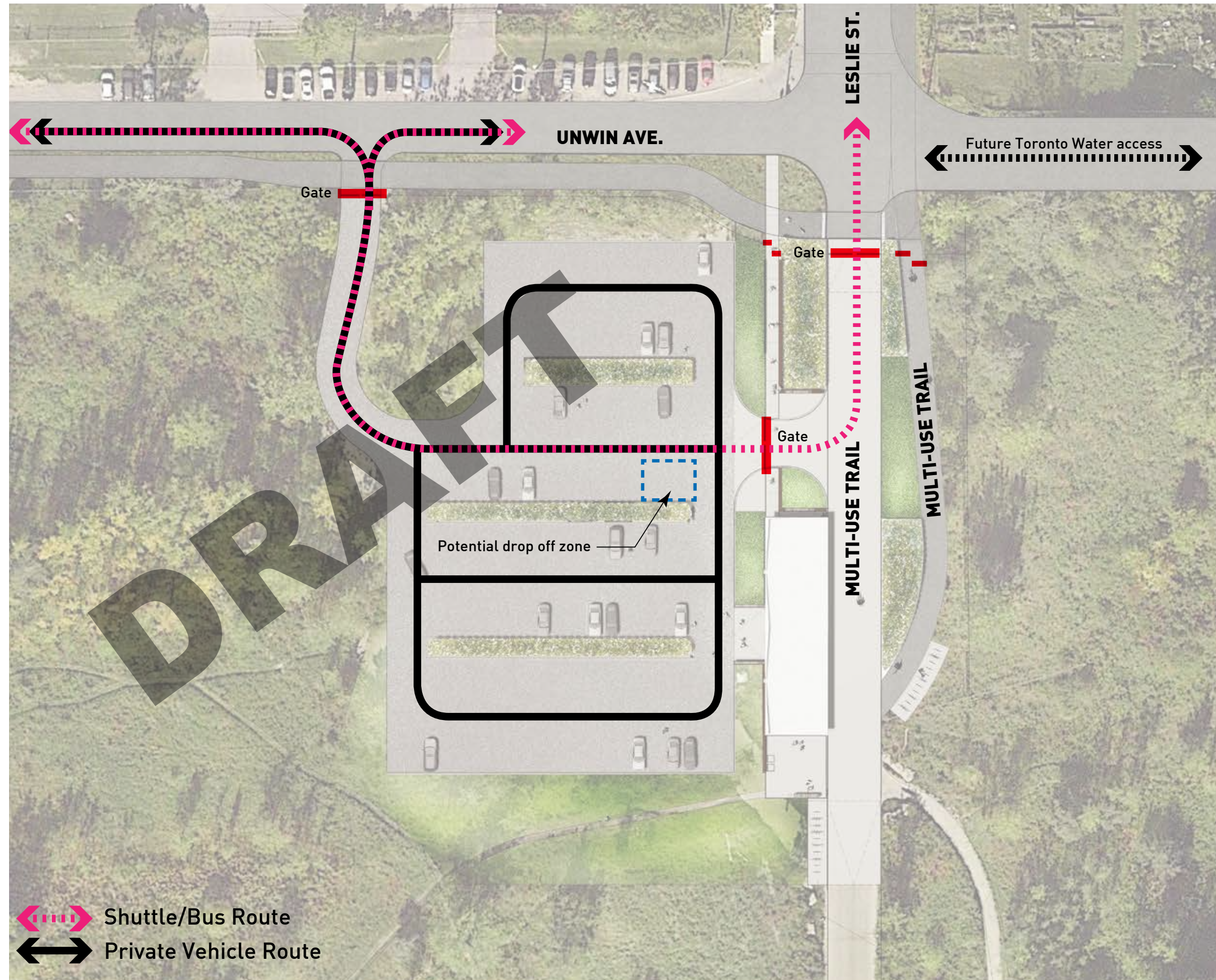
- Regrade parking lot to drain excess surface flow into landscaped swales, that in turn overflow into adjacent wetland landscapes to the west
- Create sculpted landform to the east and south to screen view of parking lot from entrance and trails and control access
- Develop drainage swales along multi-use trail to resolve current ponding issues on the trail



## Site Organization Strategy

# Site Circulation + Access Control

- Entry and exit for private vehicles from Unwin Avenue gate
- Two-way drive aisles within parking lot facilitate movements
- No access to multi-use trail - controlled by gate
- Tour bus/school bus drop off and exit controlled by gates at Multi-use trail

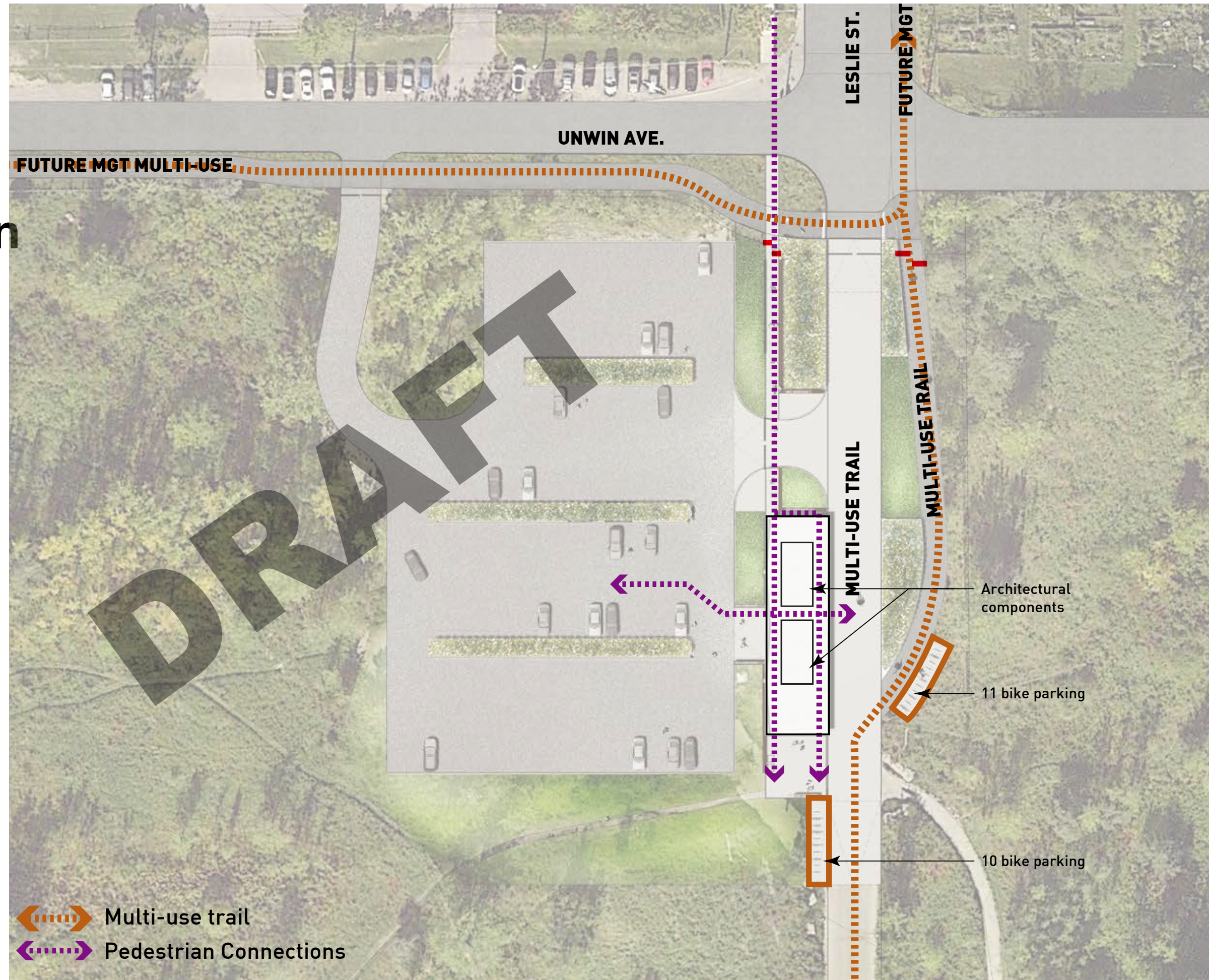




## Site Organization Strategy

# Site Circulation - Bicycle & Pedestrian

- MGT connection to multi-use trail
- Bicycle parking provided adjacent to pavilion along the multi-use trail
- Pedestrian connection along western edge of Leslie Street through the landscape, passing adjacent to the entry pavilion to the Base Lands trail heads
- Pedestrian connection from parking lot to the multi-use trail, passing through or adjacent to the pavilion



## Site Organization Strategy

# Special Event Set-Up

- Reconfigured entrance table top area can accommodate vendors for special events while minimizing conflicts with park users/cyclists



## What We Heard from DRP #1:

(Items within project scope)

- gate at entrance to be more than an ordinary gate
- Increase quantity of tree planting (Poplars/Cottonwoods) in swales/ separation of multi use trail from parking.
- consider using alternative material other than Cor Ten steel on the soffit
- material selection for pavilion should serve more than a decorative purpose
- lighting needs to be effective and sensitive

Landscape Design



# Landscape Material Selection



raised landforms w/ groundcover/ planting



porous granular pavement  
concrete /asphalt



trees/shrubs-screening  
(Eastern Cottonwood  
Red Osier Dogwood)

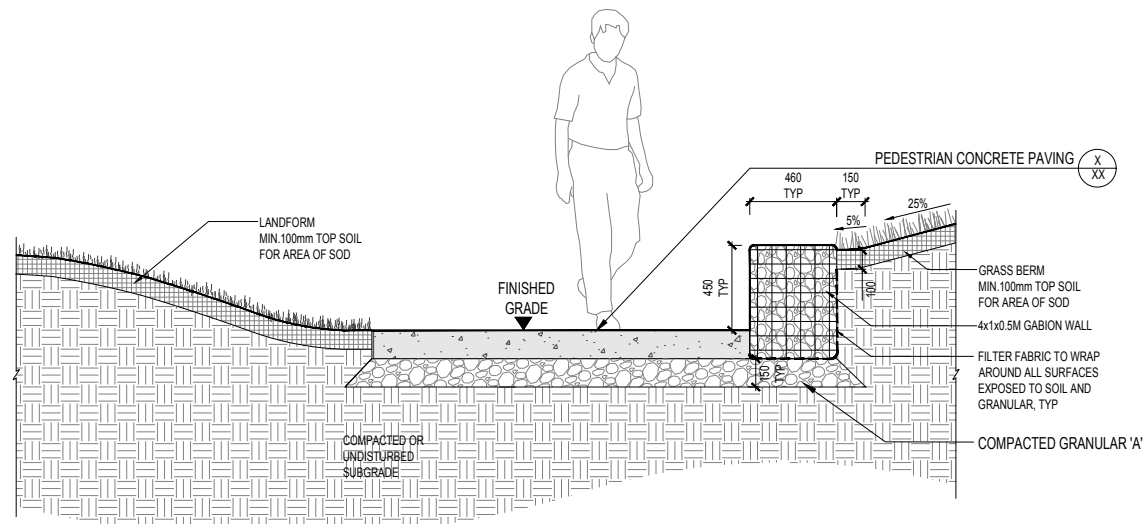


concrete retaining walls/gabion

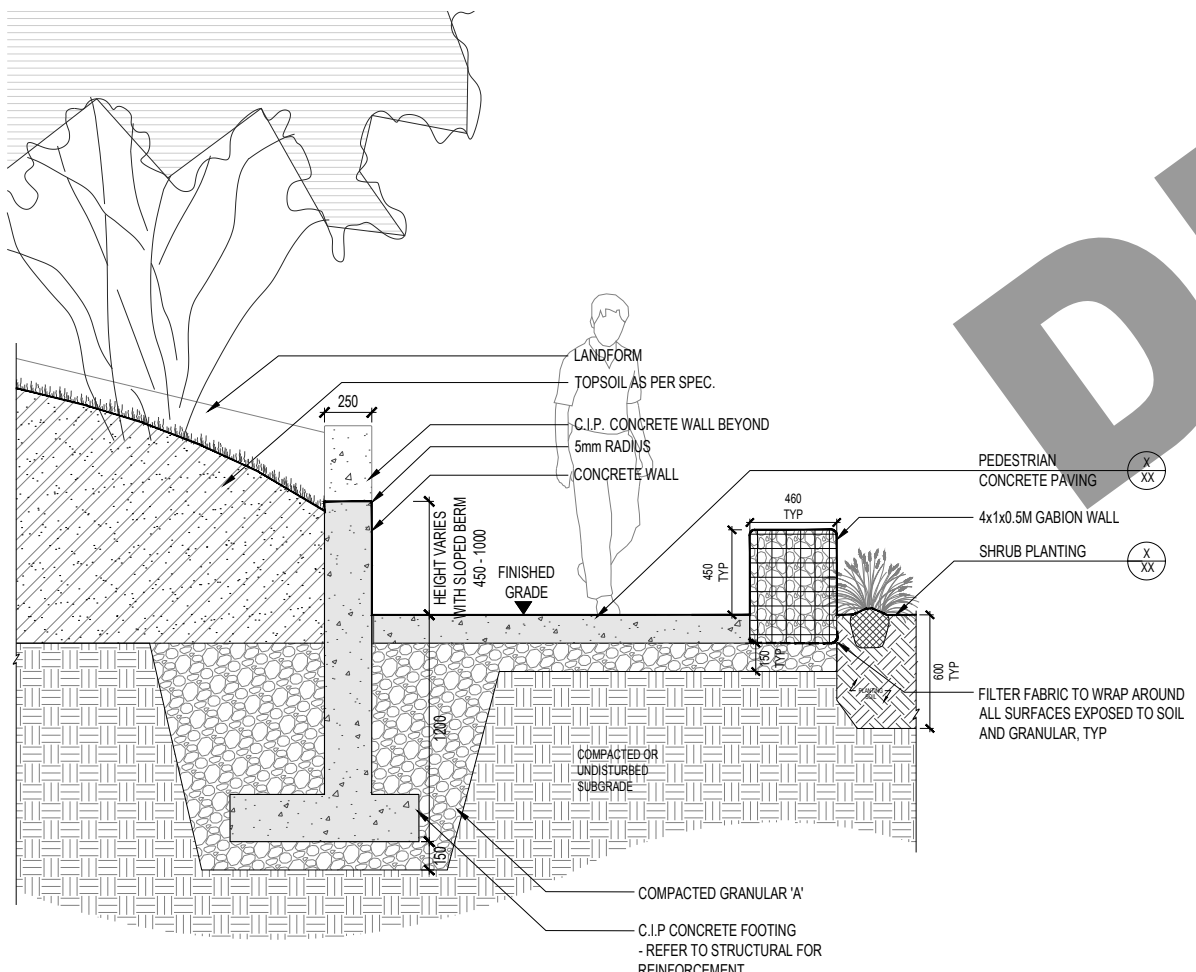


planted swales

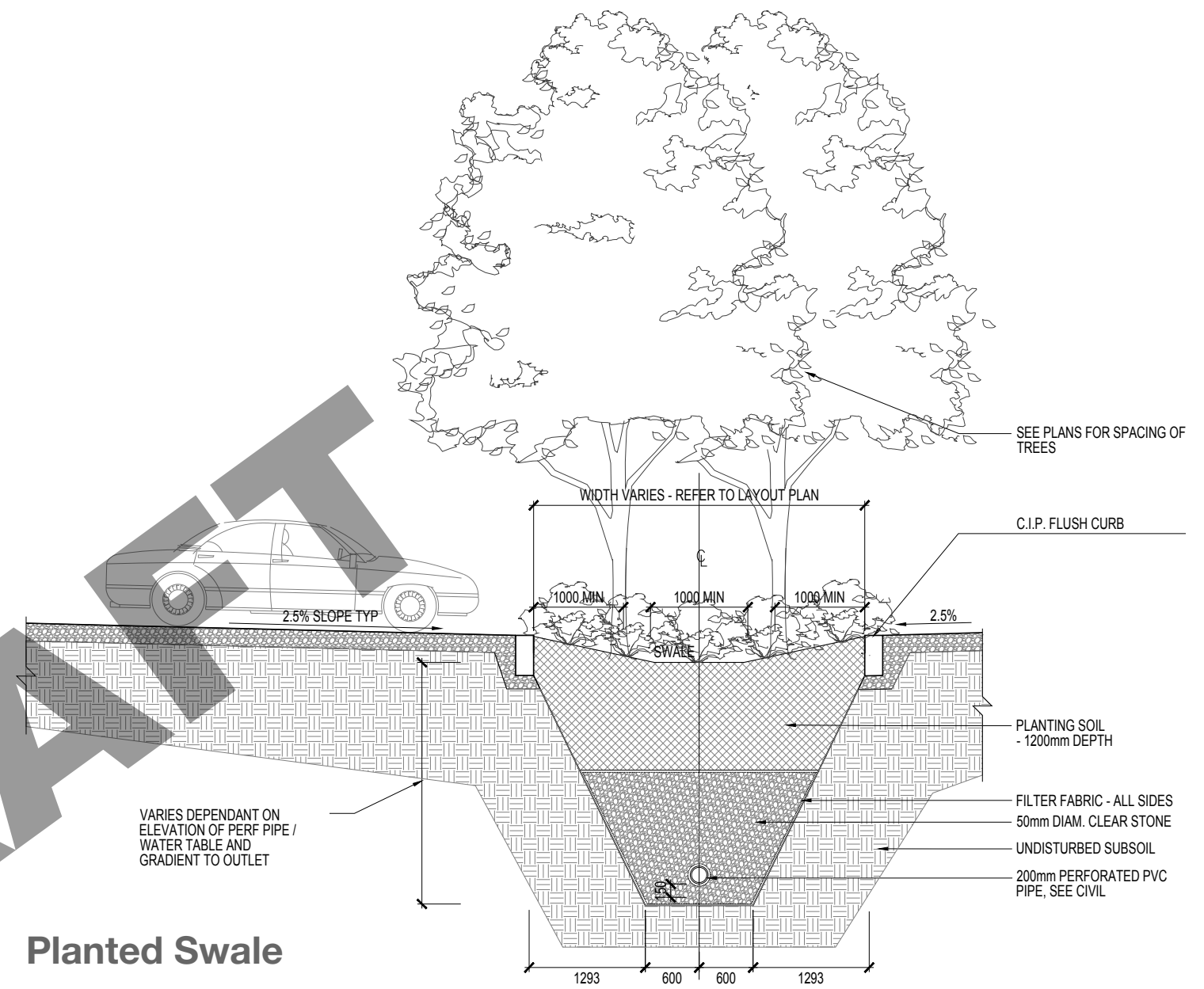
# Landscape Design



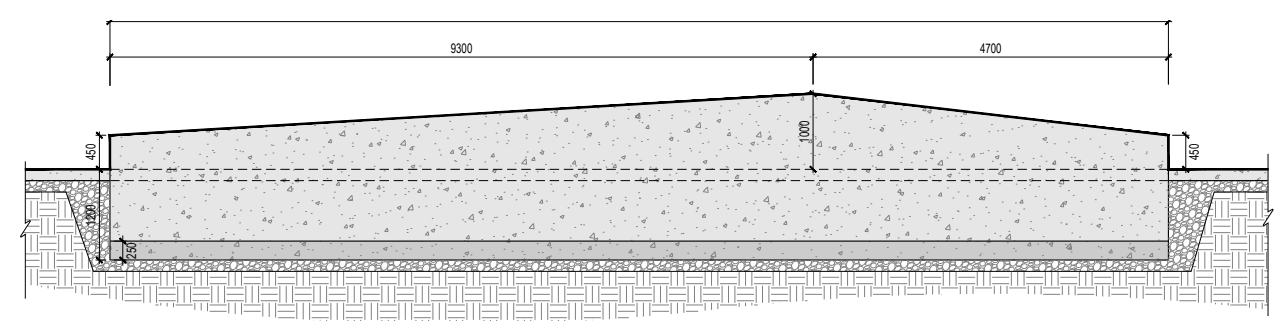
**Gabion Wall**



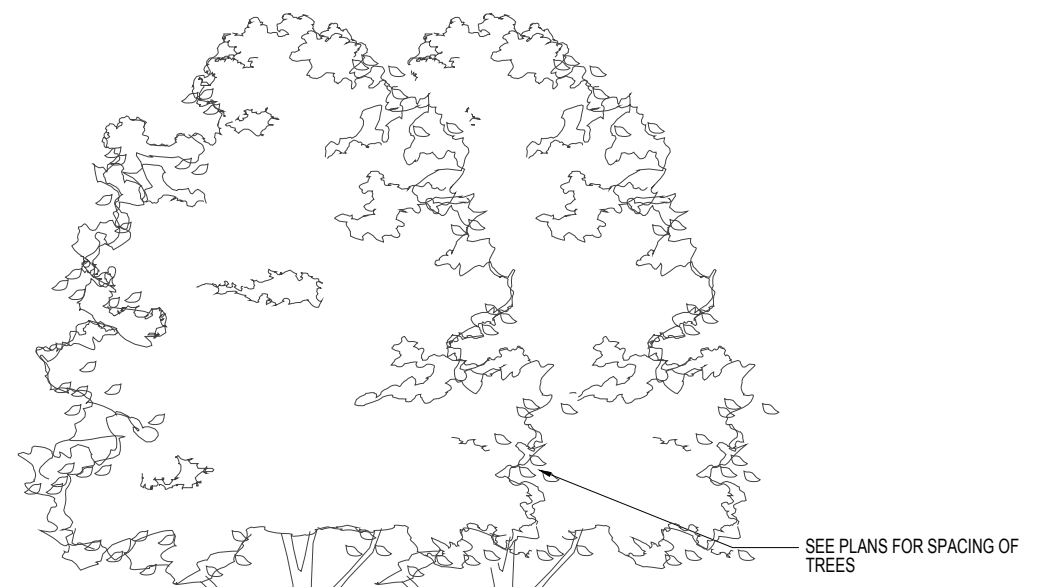
**Retaining Wall**



**Planted Swale**

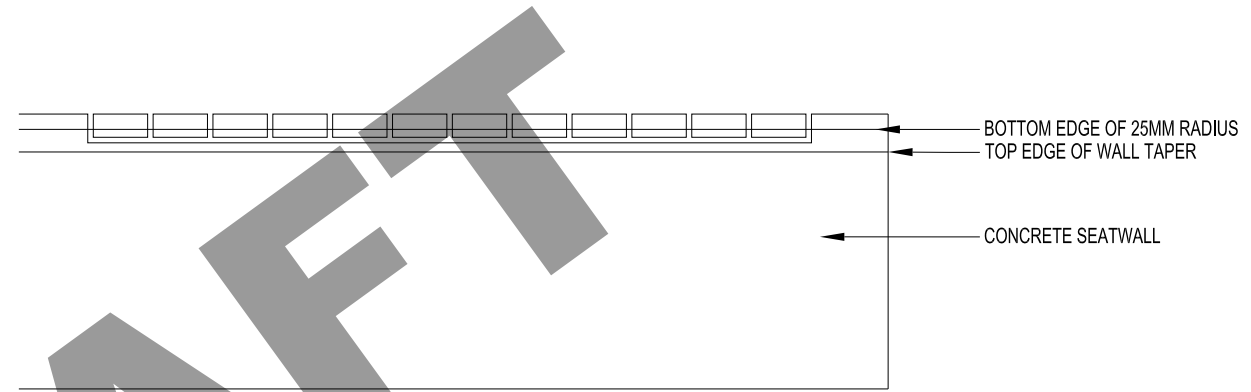
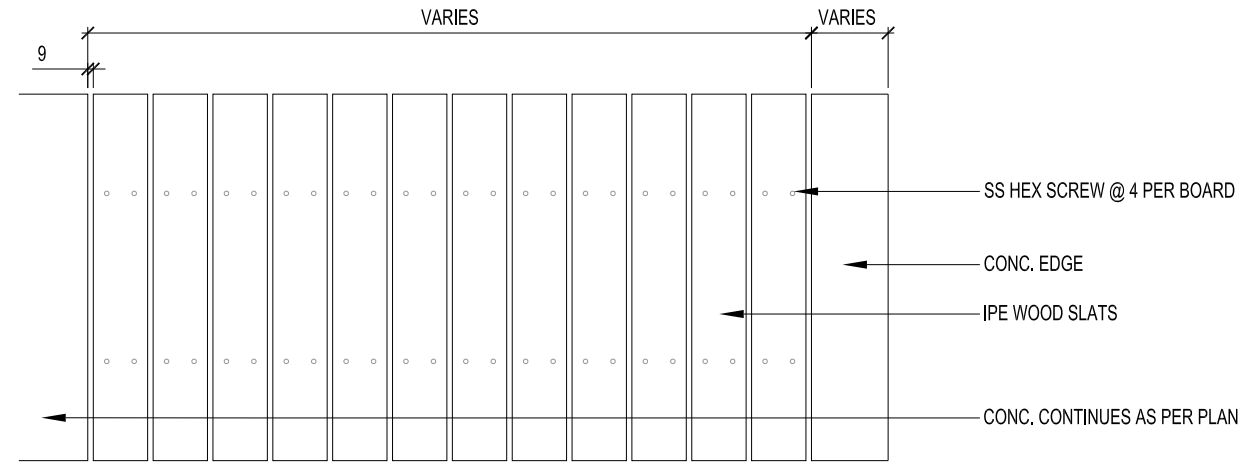
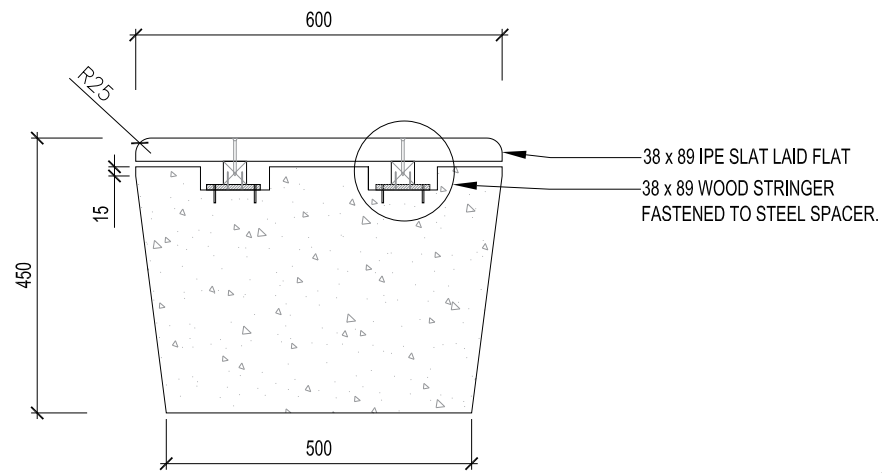


**Retaining Wall Elevation**

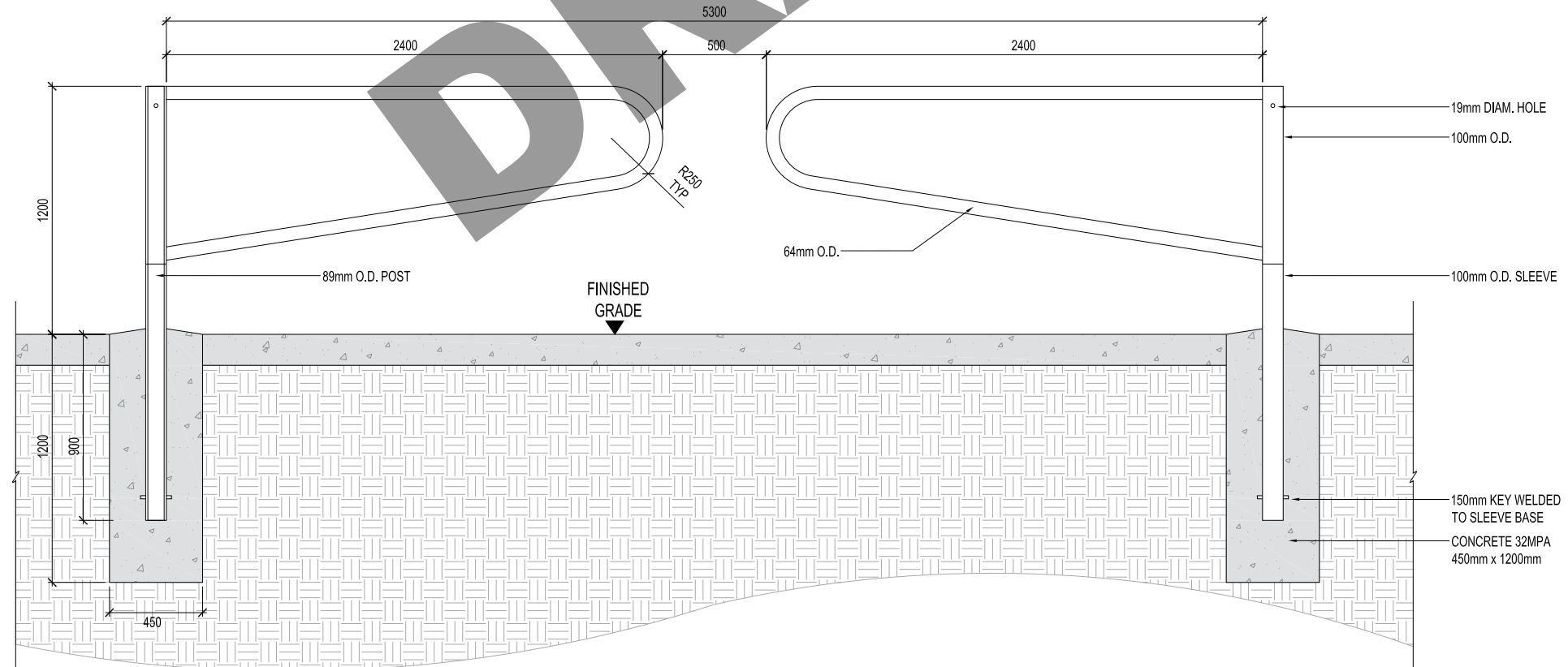


# Landscape Design

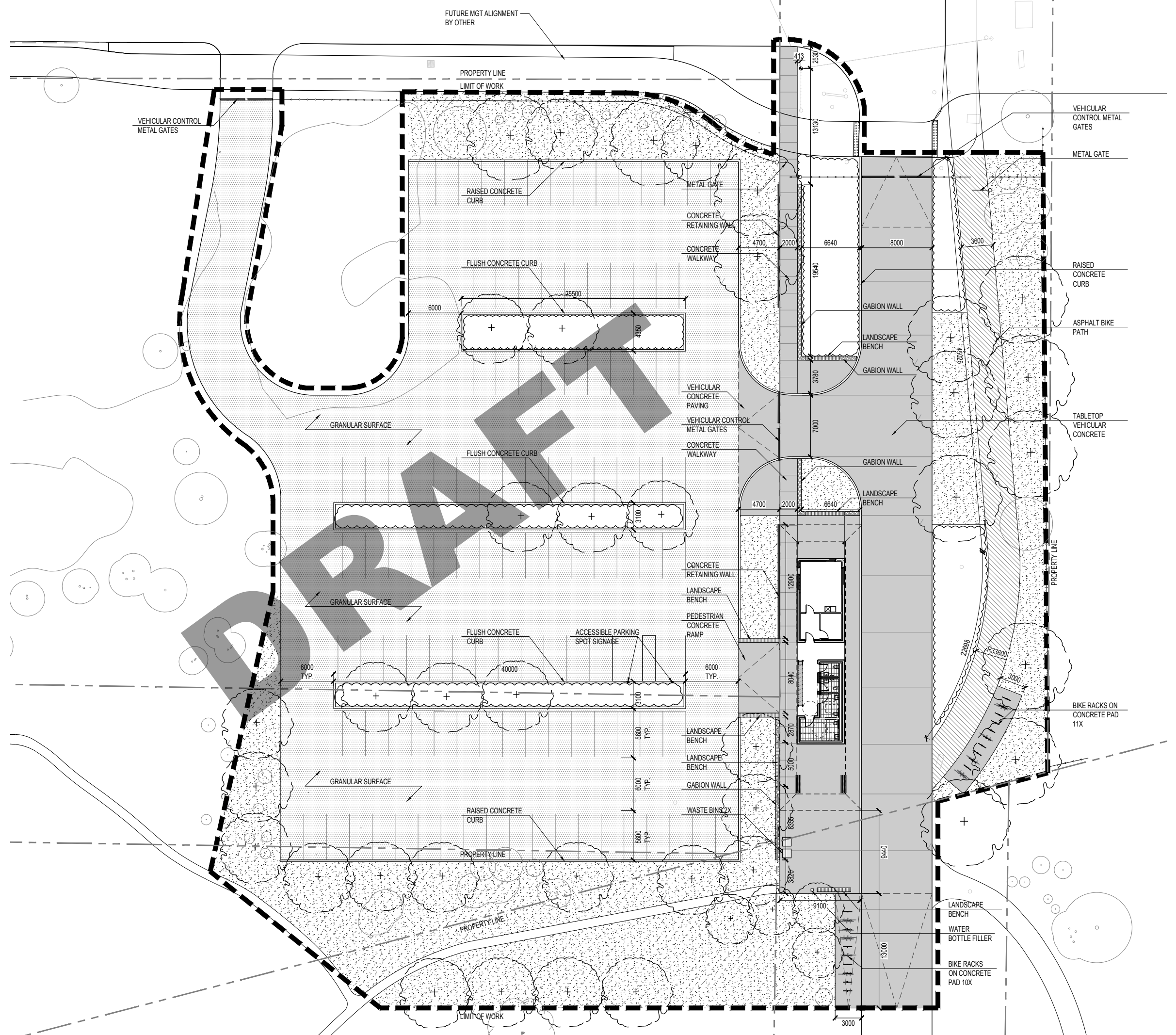
Typical Bench



Typical Entrance Gate



# Landscape Design

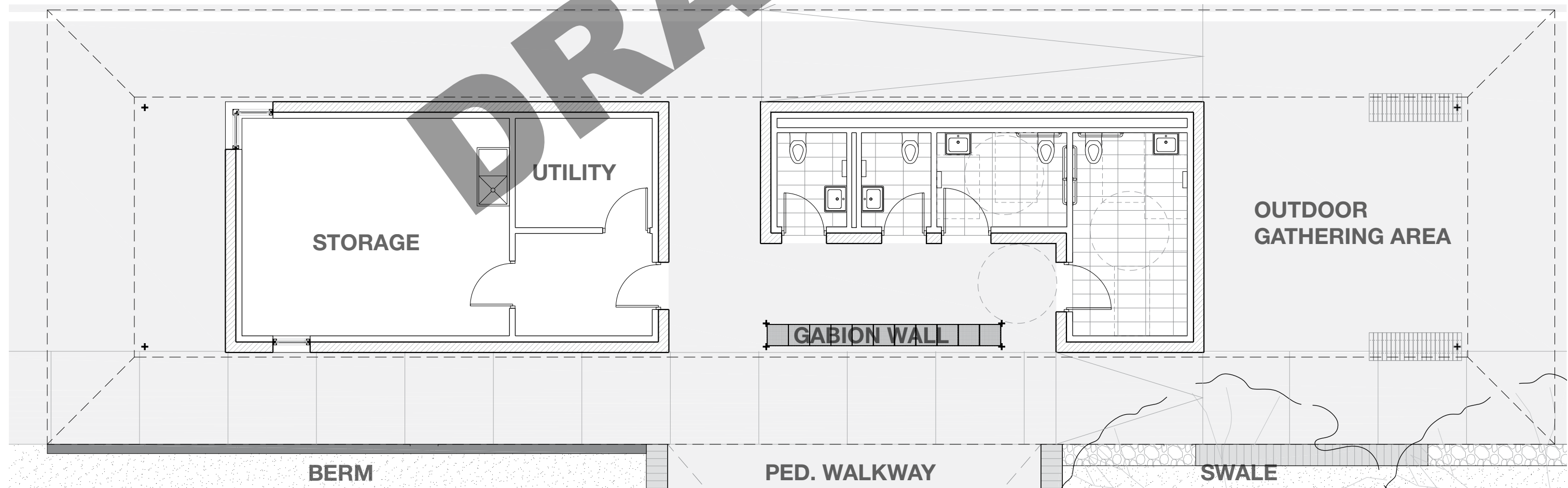




# Pavilion Design



West Elevation



Pavilion Plan

West Elevation

# Architectural Material Selection



**thin roof profile**



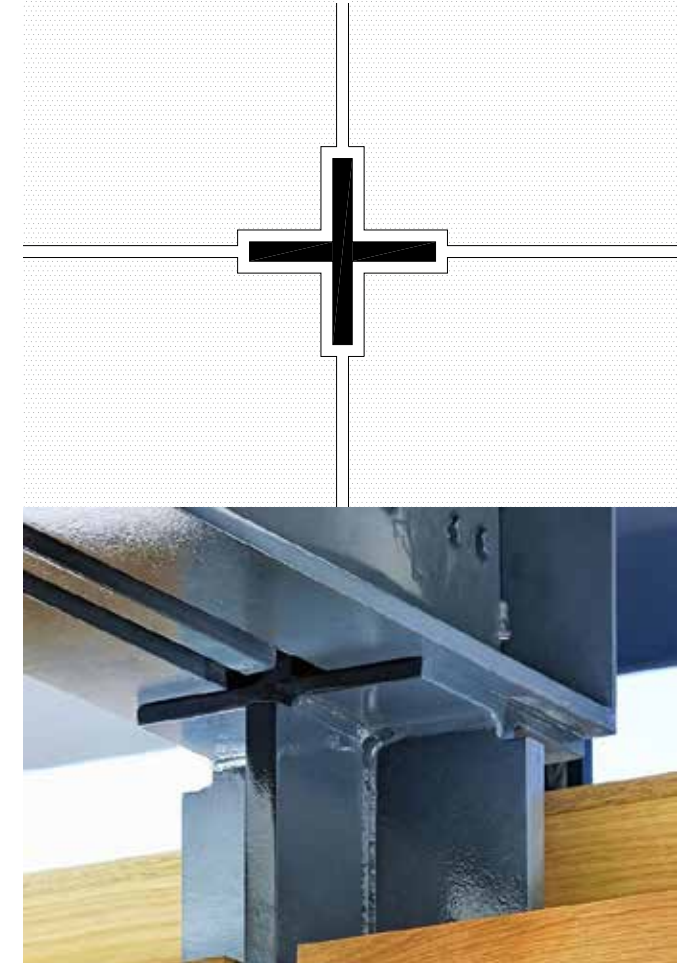
**board-form concrete**



**solid phenolic panel soffit**



**gabion wall  
aluminum-framed glazing**



**steel cruciform columns**

# Gabion Wall Material Selection



original rubble



concrete rubble



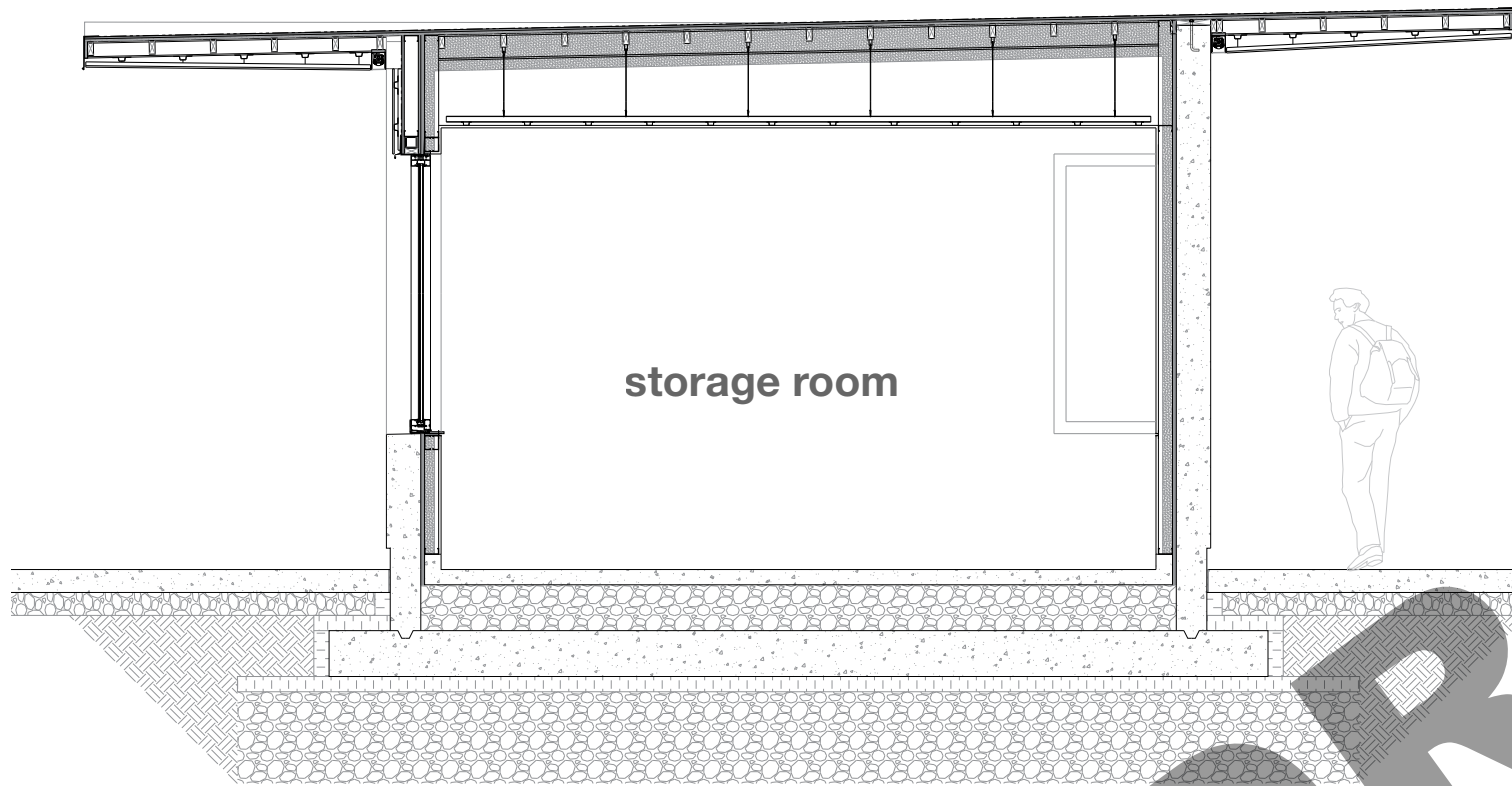
storm debris



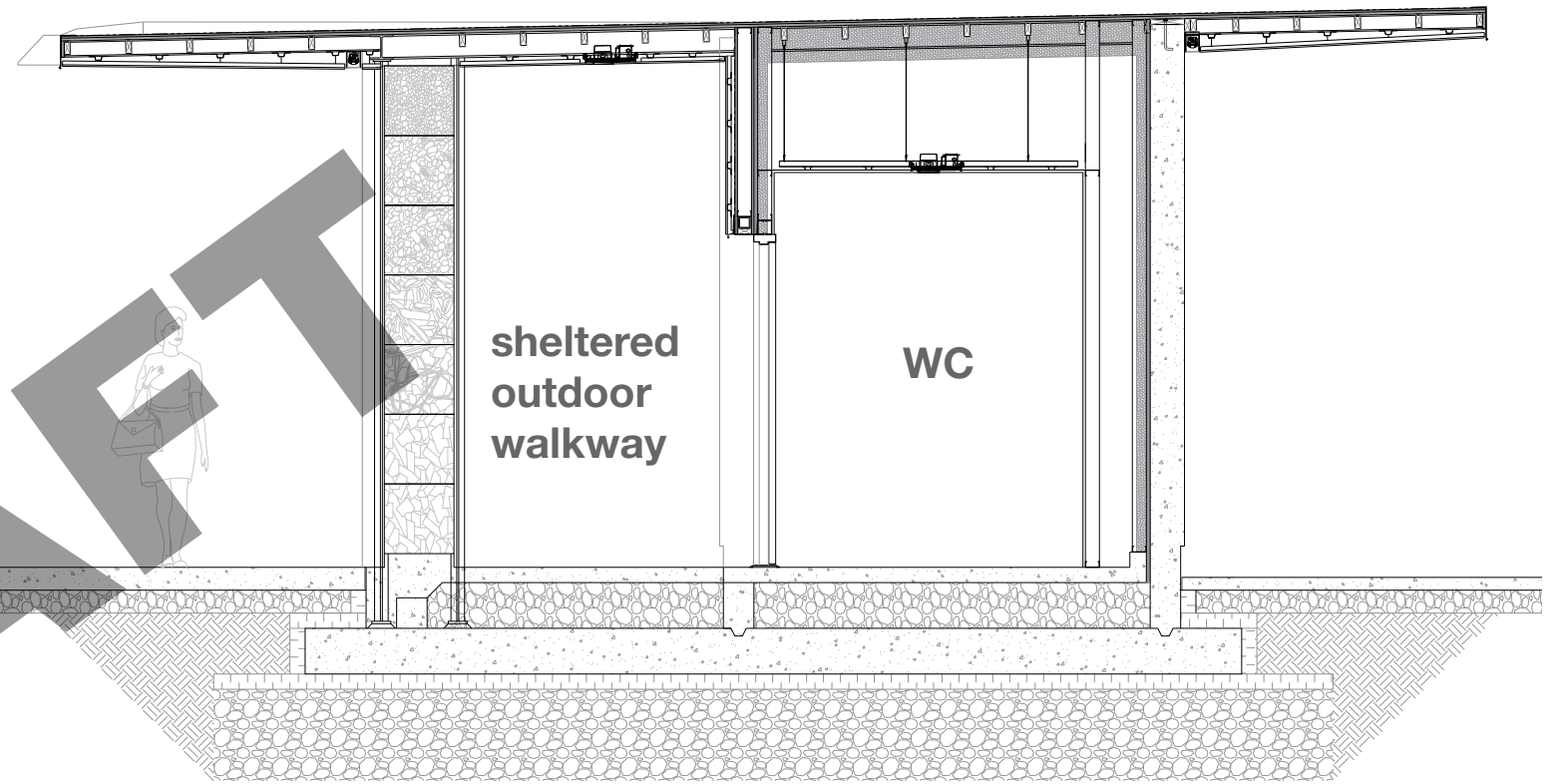
coarse aged rubble



fine aged rubble

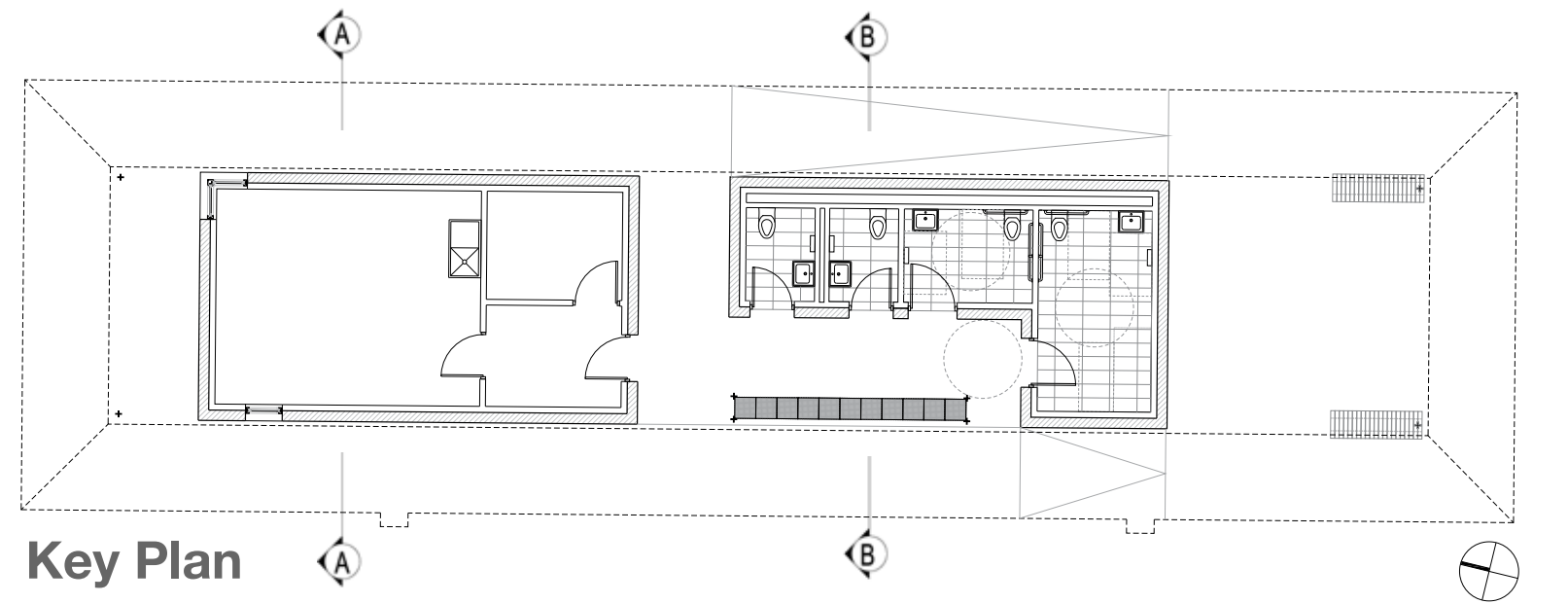


**Section AA**



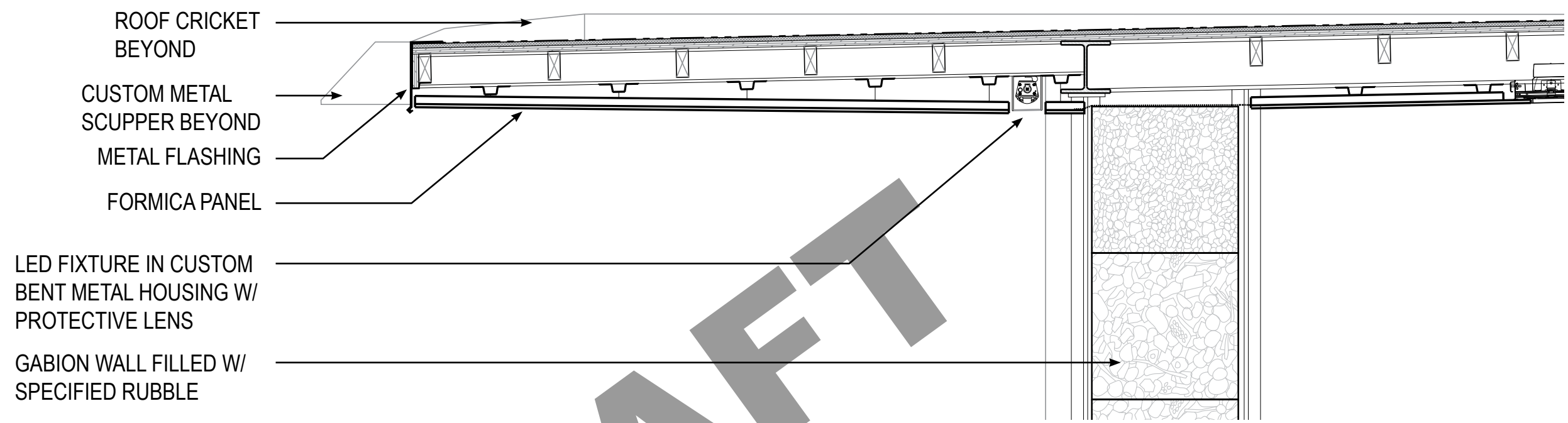
**Section BB**

**DRAFT**

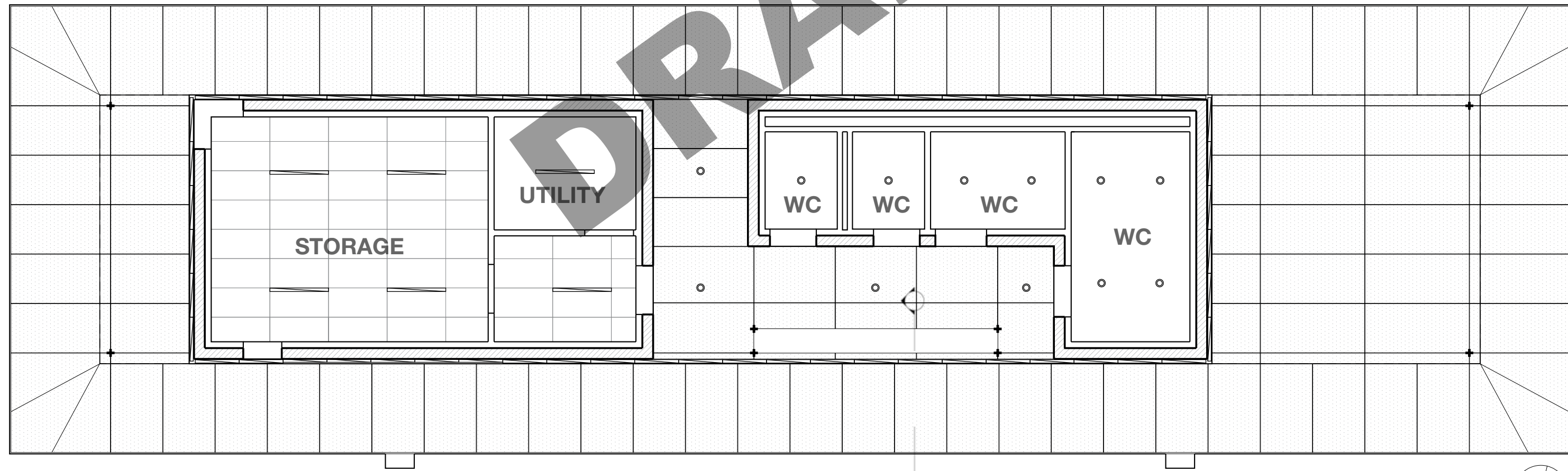


**Key Plan**

# Pavilion Design

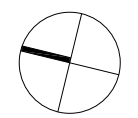


## Soffit Detail



## Reflected Ceiling Plan

SOFFIT DETAIL



Perspective View

Southeast Towards Pavilion



Perspective View

Looking North



**Perspective View**

**Looking South Along Pedestrian Walkway**





Perspective View

Birds-eye View Looking South

