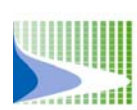


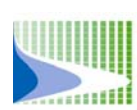
# Welcome to the Public Forum for the Don Mouth Naturalization and Port Lands Flood Protection Project





## Purpose of tonight's meeting:

- Introduction to the Project
- Outline the information that is available
- Collect your input



# Vision for the Don River Mouth

- **TWRC** - Transform entire Toronto waterfront for all Canadians, to foster growth and to significantly enhance how the City is perceived. Naturalization and flood protection along the Lower Don River is one of four priority projects.
- **City of Toronto** - A dream of transforming and re-energizing its waterfront into one of the great waterfronts of the world. A dream of building a spectacular gateway to this city, this province and this country.
- **Task Force to Bring Back the Don** - An urban wilderness...shared by nature's creatures alongside offices & homes; A destination.....people go to work or to have fun, & city meets nature; A gateway....for fish & wildlife, & people to travel; A large place.....with space for solitude.
- **TRCA** - An opportunity to correct the most significant flood risk hazard in their jurisdiction and to achieve a high level of naturalization along the Don River mouth....an opportunity to have a dream realized.



# Status of Class EA Project

## Lower Don River West - Class EA

- 1) Developed functional design for the protection of the Spill Zone 3 floodplain area – includes West Don Lands & East Bayfront Precinct Plans;
- 2) Completed Environmental Study Report - Planning approval for project;
- 3) Two Part II orders were received – Food Share and Absolute Support, both of which are located on Front Street;
- 4) Remaining items:
  - ◆ Finalize the CEAA document – the federal environmental screening report – a submission has been circulated and through on-going discussions with the agencies, approval is anticipated shortly;
  - ◆ Resolution of the Part II order requests.

## Detailed Design & Contract Administration Component 1 of LDRW Remedial Flood Protection Project

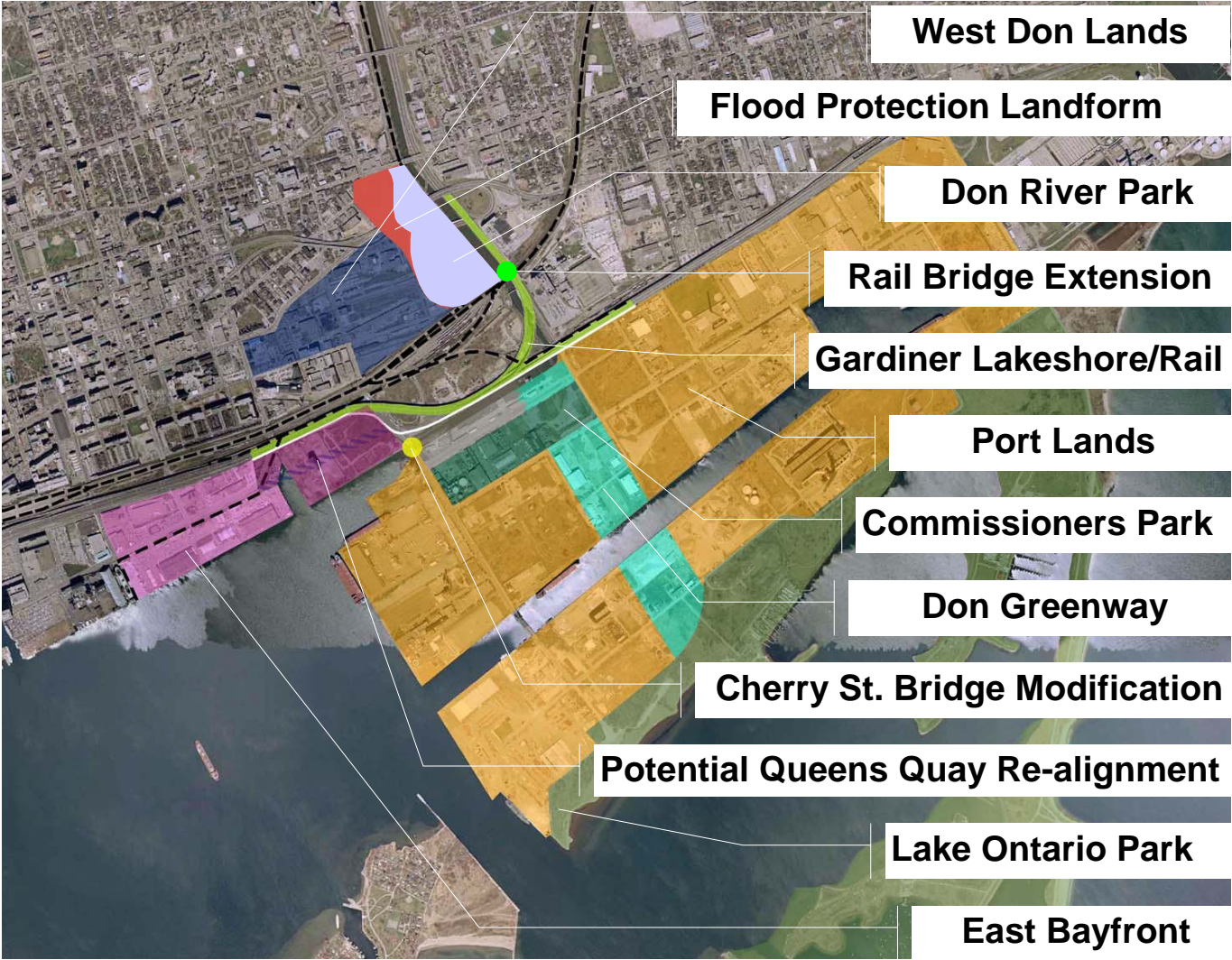
- 1) Design Team has been selected, conceptual alternatives have been prepared, TAC and CLC meetings have been convened, and a Public Open House is also being held this evening, in Rm. 307, just down the hall.
- 2) The components included as part of this design & construction assignment are: the bridge extension at the CN Kingston Subdivision (over the Don River); the pedestrian underpass at the Go Transit Bala Subdivision, and the dyke/retaining wall works on the East Bank.
- 3) An aggressive schedule has been developed for the project in order to meet the window of opportunity provided by CN – i.e., preparation of detailed design and initiation of construction by end of 2005, with works to be completed by the end of 2006.





# Don Mouth Naturalization And Port Lands Flood Protection Project

Existing and Planned  
Revitalization  
Initiatives and  
Infrastructure





# Project Team

## TRCA Team

- **Project Manager:** Adele Freeman
- **Project Coordinator:** Kenneth Dion
- **Ecological Advisor:** Deborah Martin-Downs

Toronto and Region Conservation  
5 Shoreham Drive  
Downsview, Ontario, M3N 1S4  
Tel: 416 • 661 • 6600 ext. 5230  
Fax: 416 • 667 • 6278  
Email: kdion@trca.on.ca

## Consultant Team

- Gartner Lee and SENES in association with:
  - Aquafor Beech Ltd.
  - Baird
  - DCS
  - EarthTech
  - Schollen & Company
  - Unterman McPhail
  - Archaeological Services Inc.

Public consultation for the EA Terms of Reference (ToR) will be lead by Nicole Swerhun with support from TRCA staff



# Project Schedule

Task #	Task Name	2005					2006				2007				2008
		Qtr 4	Qtr 1	Qtr 2	Qtr 3	Qtr 4	Qtr 1	Qtr 2	Qtr 3	Qtr 4	Qtr 1	Qtr 2	Qtr 3	Qtr 4	Qtr 1
	<b>Stage 1</b>														
1	<input type="checkbox"/> <b>Develop EA Terms of Reference</b>														
	Phase 1 - Project Introduction														
	Phase 2 - ToR Component Discussions														
	Phase 3 - ToR Development														
	<b>Stage 2</b>														
2	<input type="checkbox"/> <b>Develop Individual EA</b>														
3	<input type="checkbox"/> <b>CEAA Documentation</b>														
4	<input type="checkbox"/> <b>Approvals</b>														
5	<input type="checkbox"/> <b>Design and Construction</b>														

9 – 18 Months

1 – 5 Years



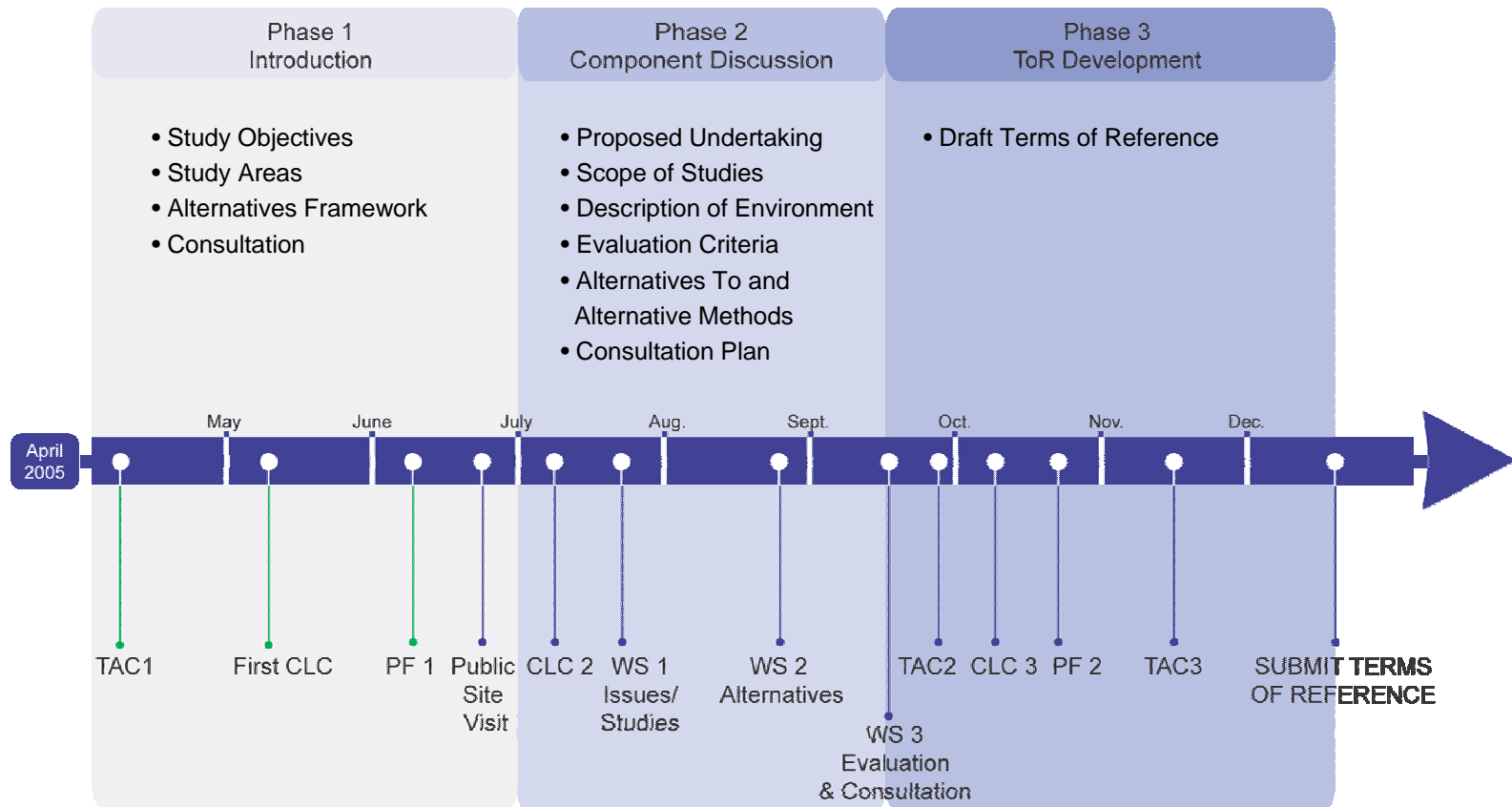
# EA Requirements

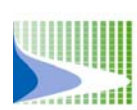
- A Terms of Reference (ToR) is the first step of a two step *Environmental Assessment Act (EAA)* approval process for proposed undertakings in the Province of Ontario.
  - The ToR sets out the proponent's work plan for addressing the second step of the EAA approvals process: preparation and review of the Environmental Assessment (EA).
  - The ToR provides the framework that the Ministry of Environment will use for the evaluation of the EA.
  - Allows interested parties to understand their involvement in the process.
- In general, a ToR should
    1. Identify the purpose of the proposed undertaking
    2. Provide a general description of the proposed undertaking
    3. Provide a general description of the environment that may be potentially affected by the project
    4. Outline the alternatives that will be considered in the EA
    5. Identify how alternatives will be evaluated and how a preferred chosen
    6. Describe the consultation that will take place during preparation of the EA
    7. Outline other approvals that may be required and the proposed schedule
  - Consultation between the proponent and interested parties is required as part of preparing a ToR





# Consultation Timeline





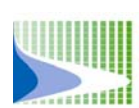
# Goal and Objectives

**The Goal of the Don Mouth Naturalization is:**

- **To establish the form, features, and function of a natural river mouth within the context of an urban environment.**

## **Objectives of the Proposed Undertaking**

- **Naturalization of Don River Mouth**
- **Flood Protection**
- **Operational management of the river. (sediment, debris and ice management)**
- **Integrate existing infrastructure functions that could not be reasonably moved. (including road, rails, utilities, trails, and power)**
- **Support additional compatible recreational, cultural, and heritage opportunities**
- **Coordinate with other planning efforts for the revitalization of the waterfront and associated certain and reasonably foreseeable infrastructure**



# Don River Mouth

*Then*



*Now*







# Alternatives To

## 1. Do Nothing



## 2. River/Estuary with discharge to the inner harbour

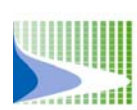


## 3. River/Estuary with discharge through the Port Lands



## 4. Combination of Discharge Point (Primary and Regional flood Overflow)





# Alternative Methods

The alternative methods will be based on the 'Alternatives to' with the addition of flood control, channel design, operational management, infrastructure considerations, pathway linkages and naturalization components.





# Study Areas

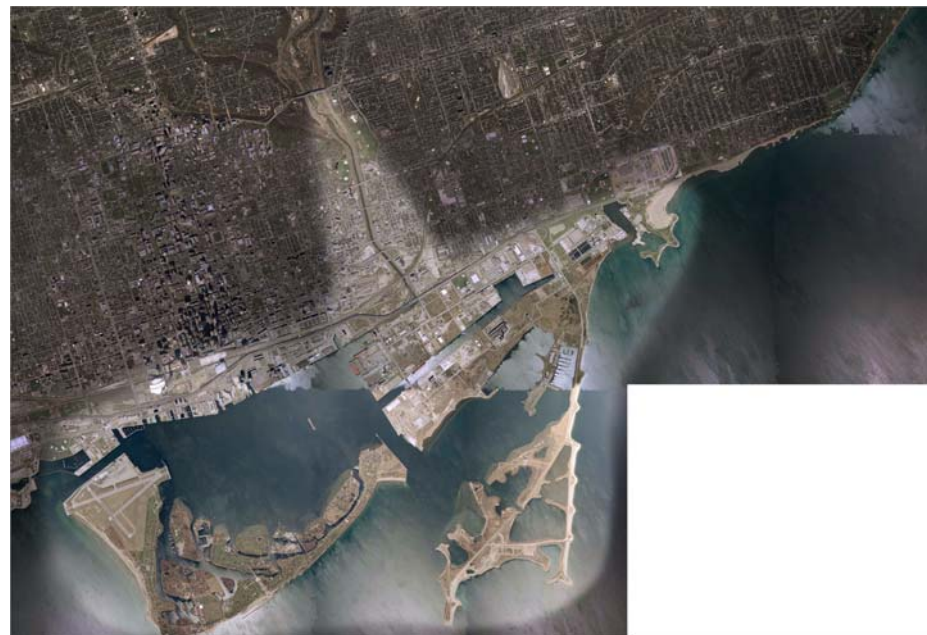
Naturalization  
Study Area



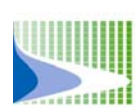
Flood  
Protection  
Study Area



Local Study Area







# How do you use the Don River Mouth?

