

WELCOME

BASELANDS TRAILS MASTER PLAN

COMMUNITY MEETING
Tuesday April 28, 2015
Fire Academy, 895 Eastern Ave.

www.trca.on.ca
www.waterfronttoronto.ca



PLEASE PLACE A DOT ON YOUR FAVOURITE BASELANDS SPOT(S) AND USE A STICKY NOTE TO TELL US WHY IT IS A FAVOURITE SPOT.



Community Meeting

Tuesday April 28, 2015
Fire Academy, 895 Eastern Ave.

Victor Ford and Associates Inc
Landscape Architects

BASELANDS TRAILS

GOAL

To design a trail system that respects the significant natural environment of the Baselands while providing a variety of nature-based experiences.

PRINCIPLES

- **Avoid significant biological and ecological resources**
- **Minimize impacts on hydrology**
- **Enhance user experiences**
- **Improve user safety**
- **Improve accessibility and access to key points of interest**
- **Minimize user conflict**
- **Minimize the number of and proliferation of unauthorized trails**



LEGEND

- Existing Martin Goodman Trail (On-road and Off-road)
- Existing On-road Bike Route
- Existing Off-road Bike Route
- Existing Signed Bike Route

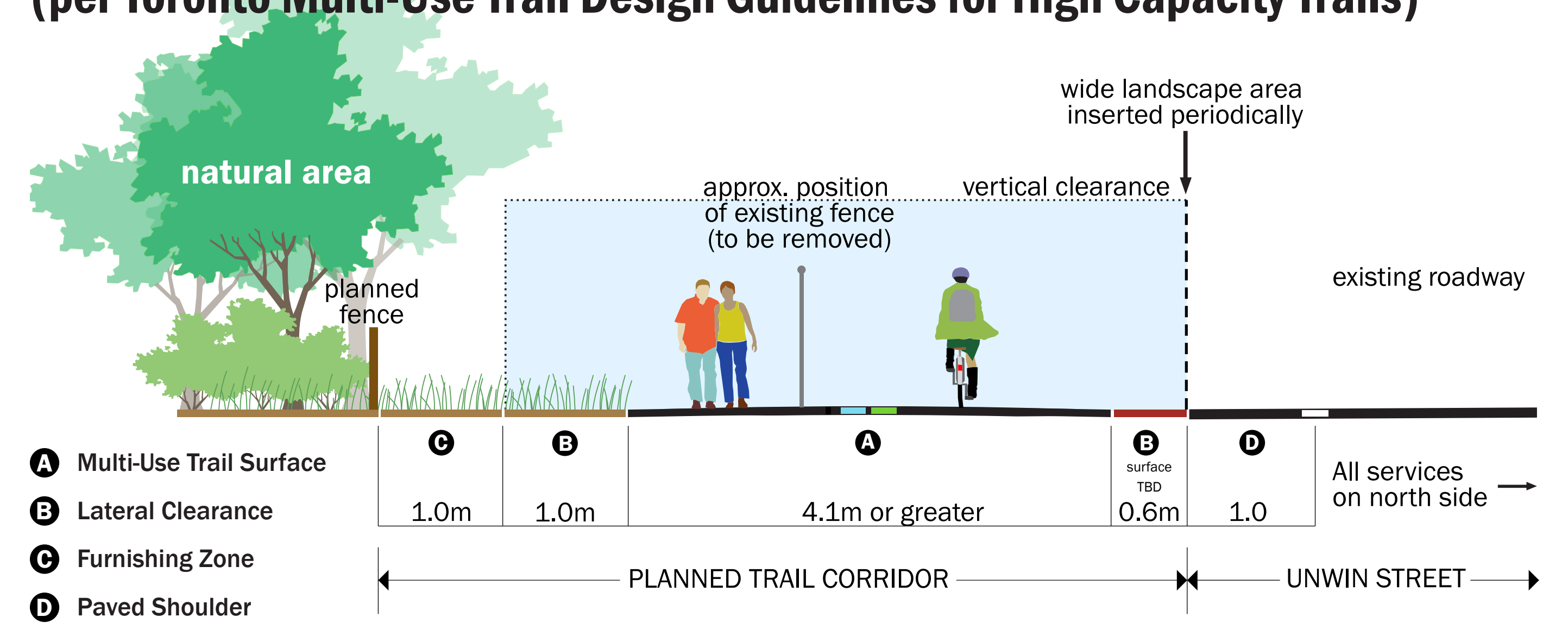


Context

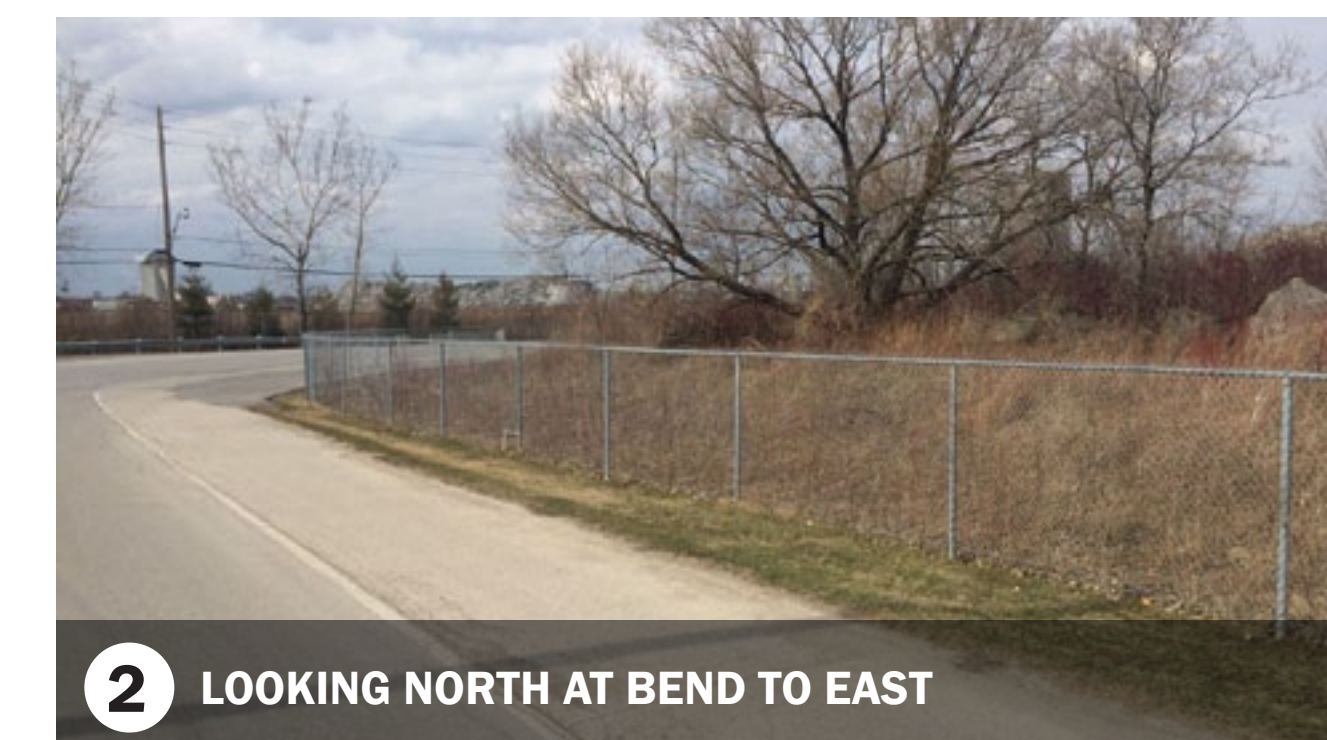
Community Meeting
 Tuesday April 28, 2015
 Fire Academy, 895 Eastern Ave.
 Victor Ford and Associates Inc
 Landscape Architects



Planned Martin Goodman Trail Cross-section (per Toronto Multi-Use Trail Design Guidelines for High Capacity Trails)



CURRENT CONDITIONS

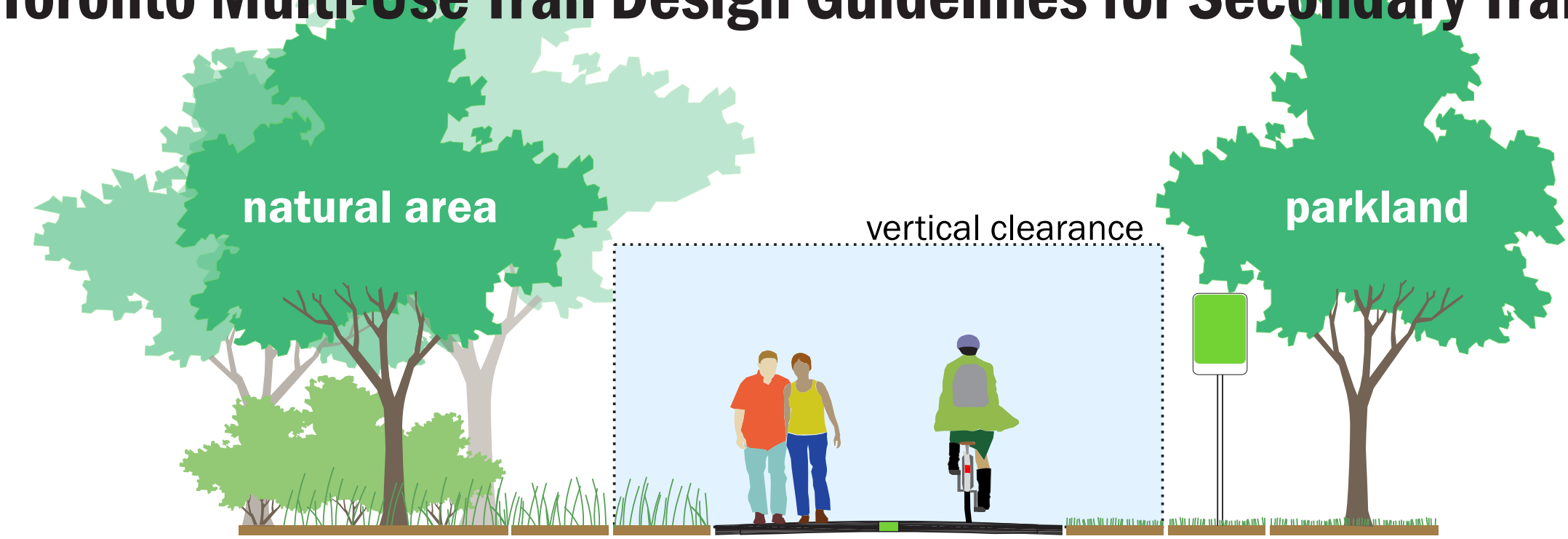


TRAIL PRECEDENTS





Proposed Multi-Use Trail Cross-section (per Toronto Multi-Use Trail Design Guidelines for Secondary Trails)

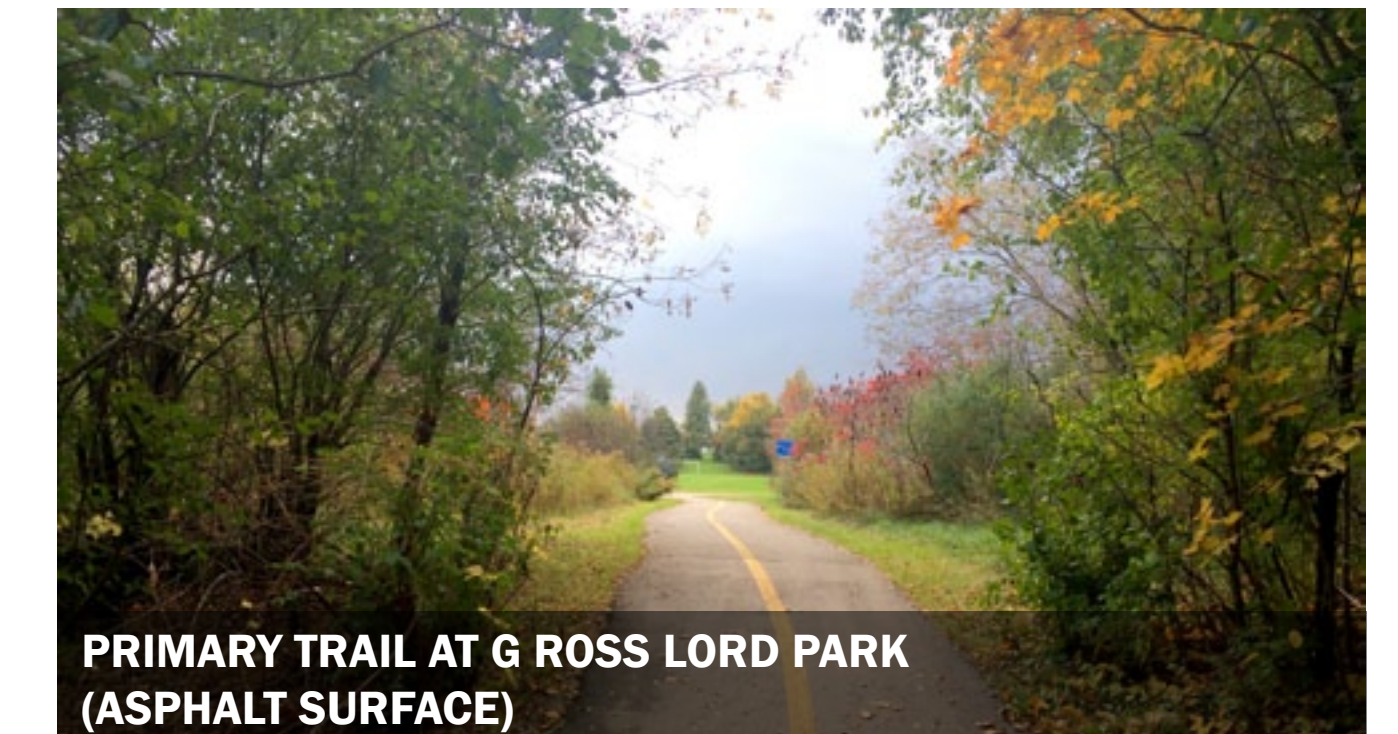


	C	B	A	B	C	required corridor	
A Multi-Use Trail Surface	0.6m	0.6m	2.7m	0.6m	0.6m	total=5.1m	minimum
B Lateral Clearance	1.0m	1.0m	3.0m	1.0m	1.0m	total=7.0m	default
C Furnishing Zone	n/a	n/a	n/a	n/a	n/a	not applicable	exemplary

CURRENT CONDITIONS

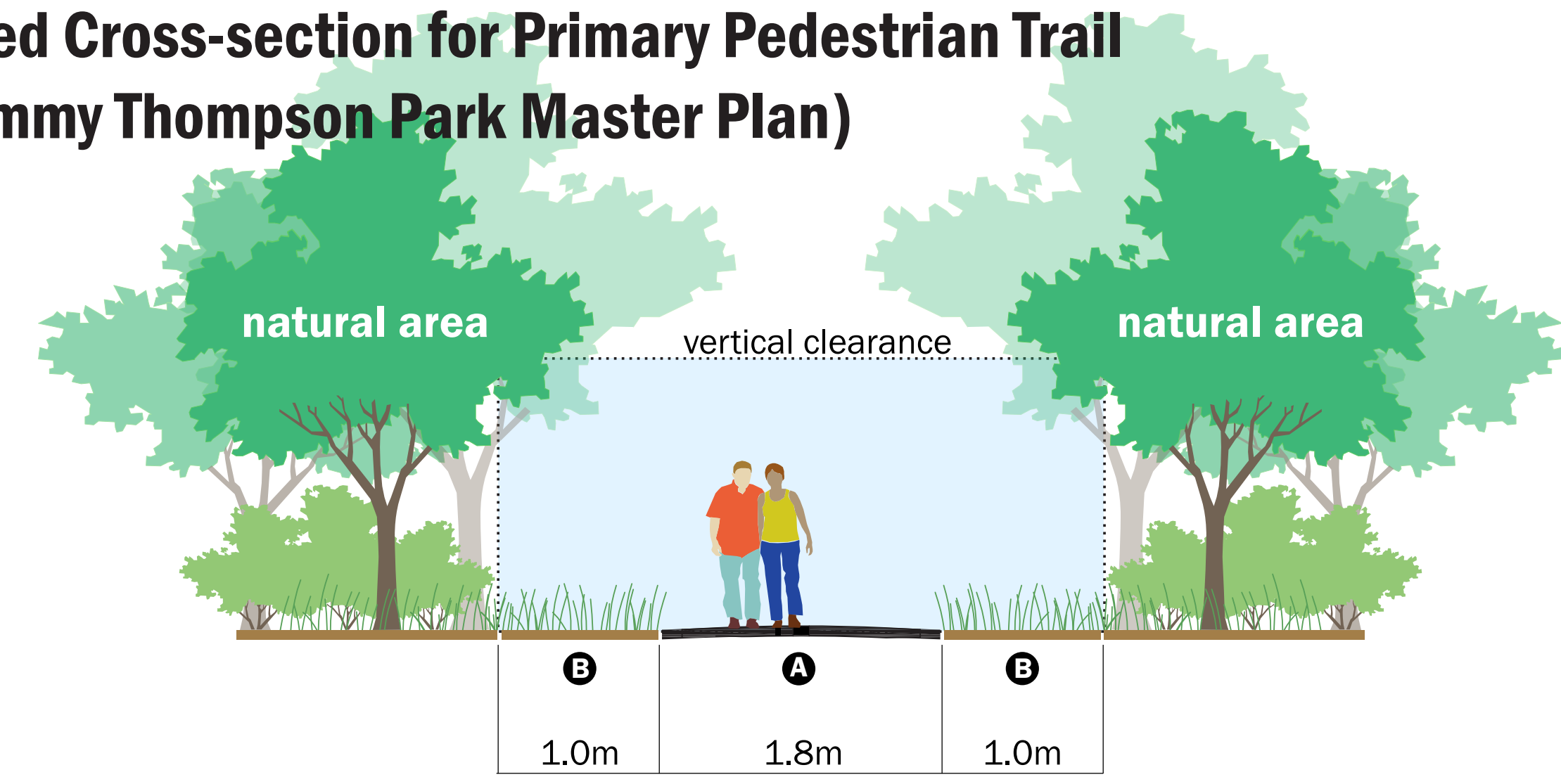


TRAIL PRECEDENTS





Proposed Cross-section for Primary Pedestrian Trail (per Tommy Thompson Park Master Plan)

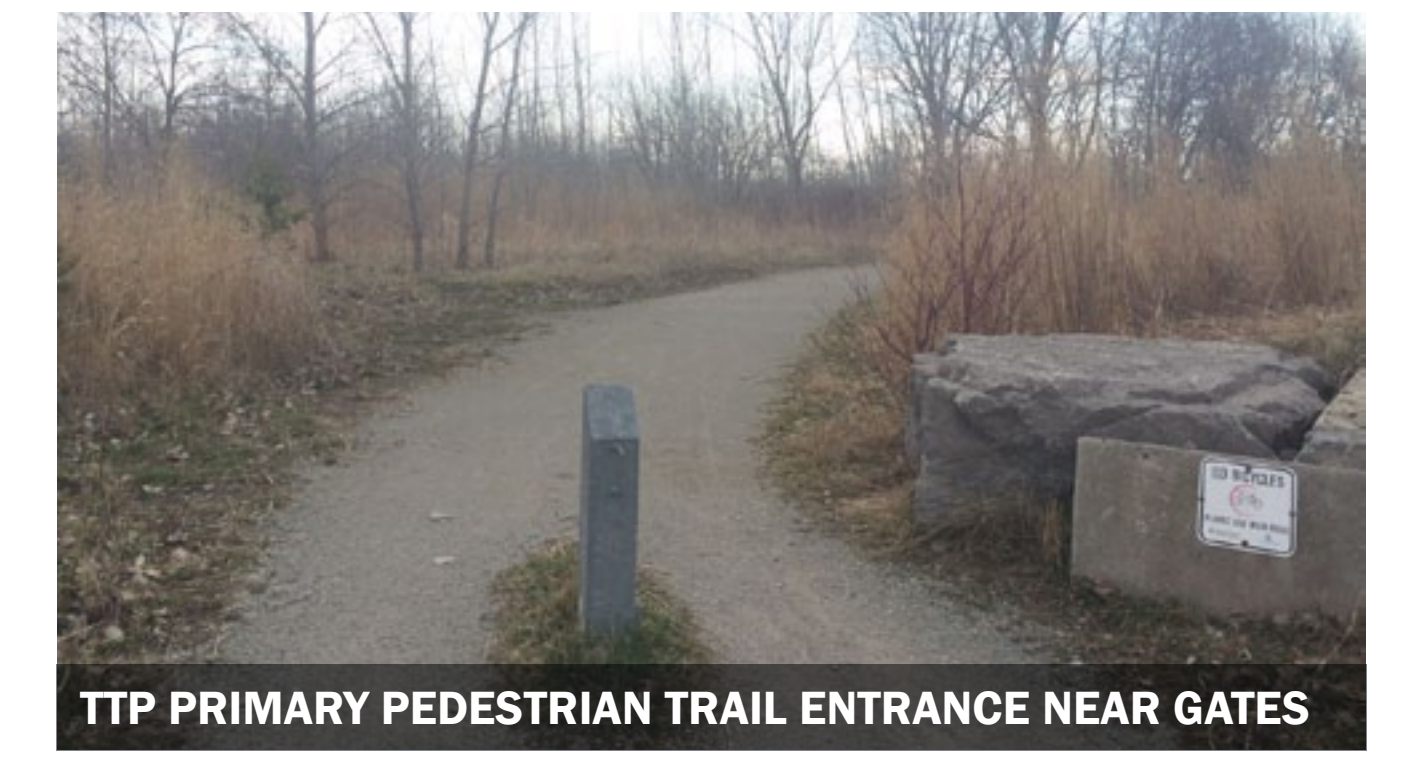
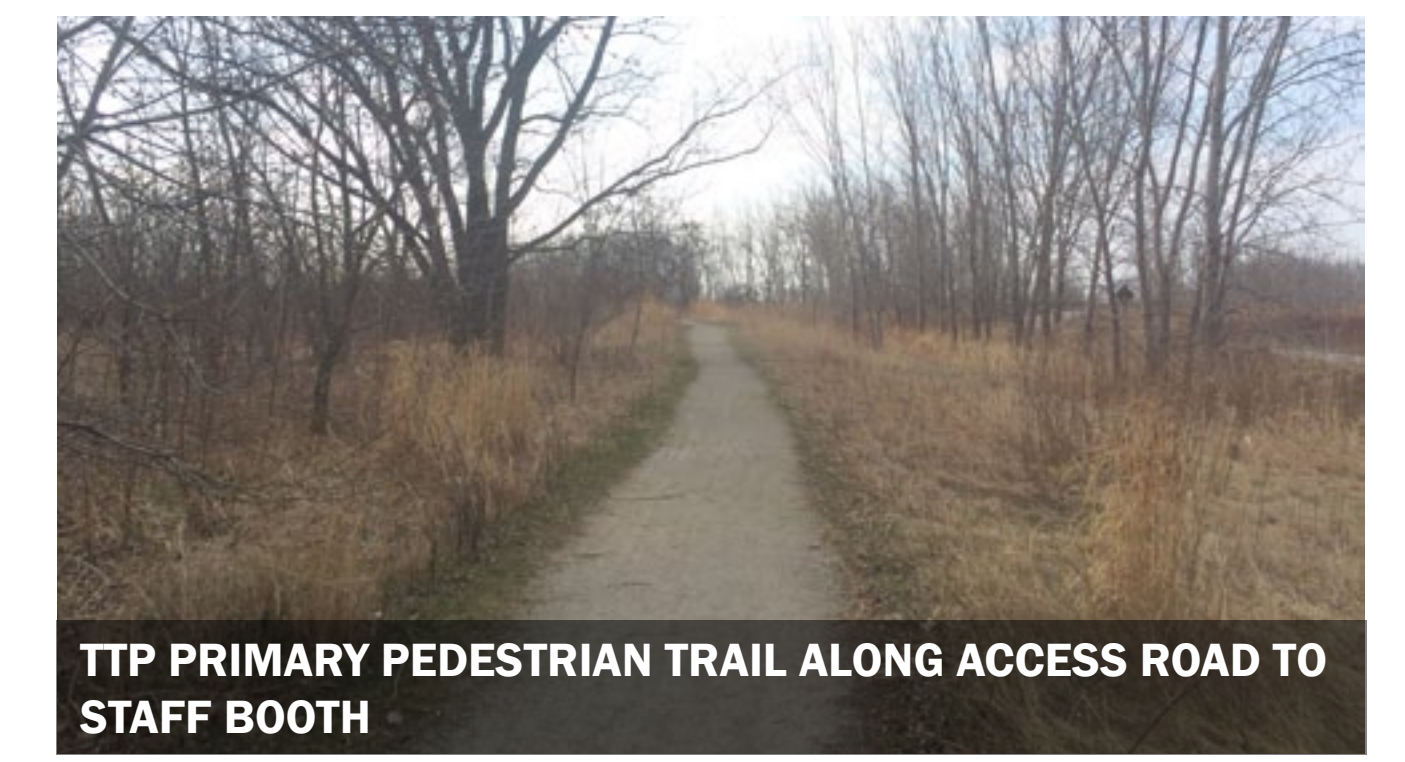


- A** Improved Surface
- B** Cleared Area

CURRENT CONDITIONS

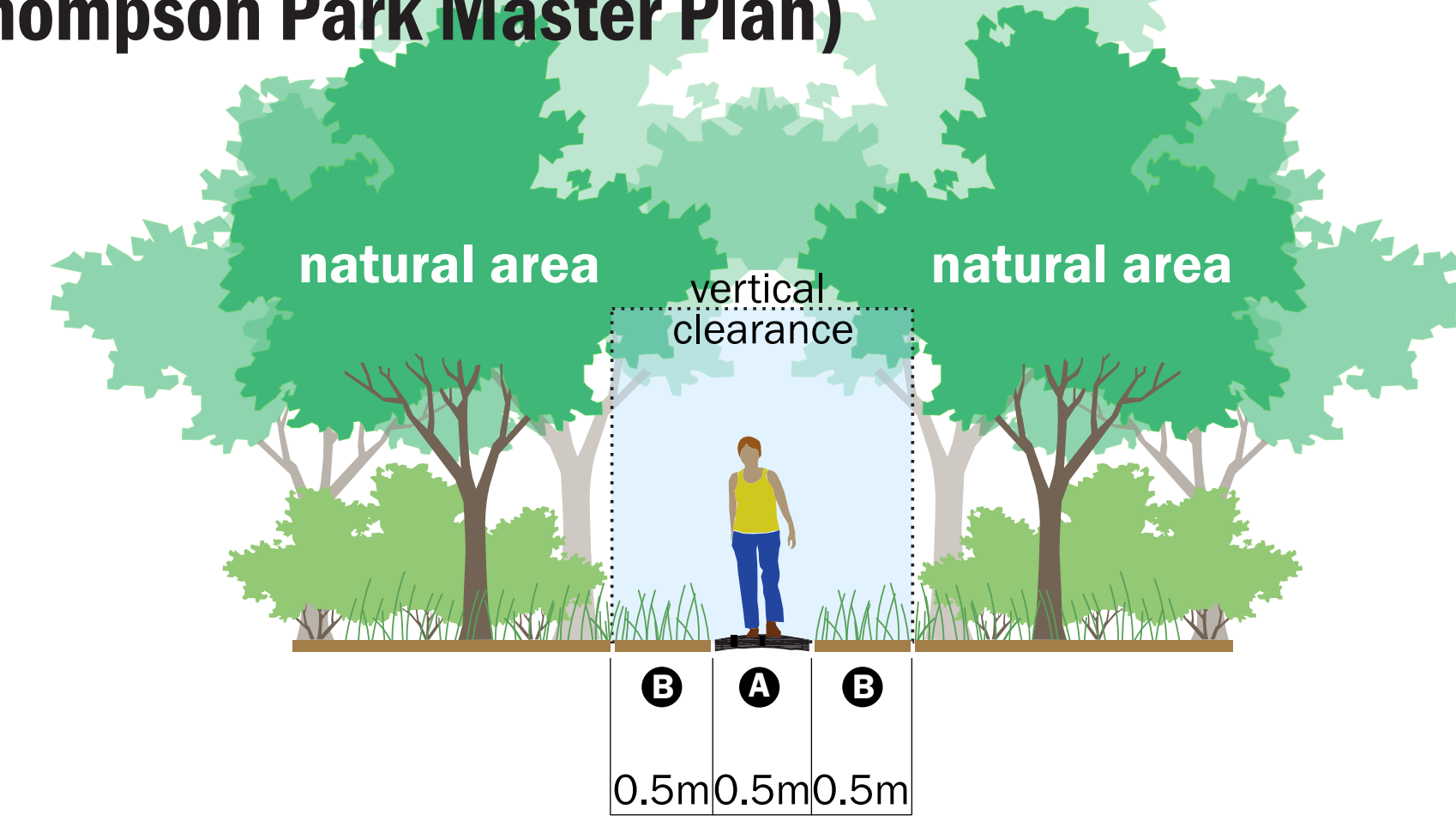


TRAIL PRECEDENTS





Proposed Cross-section for Nature Viewing Trail (per Tommy Thompson Park Master Plan)



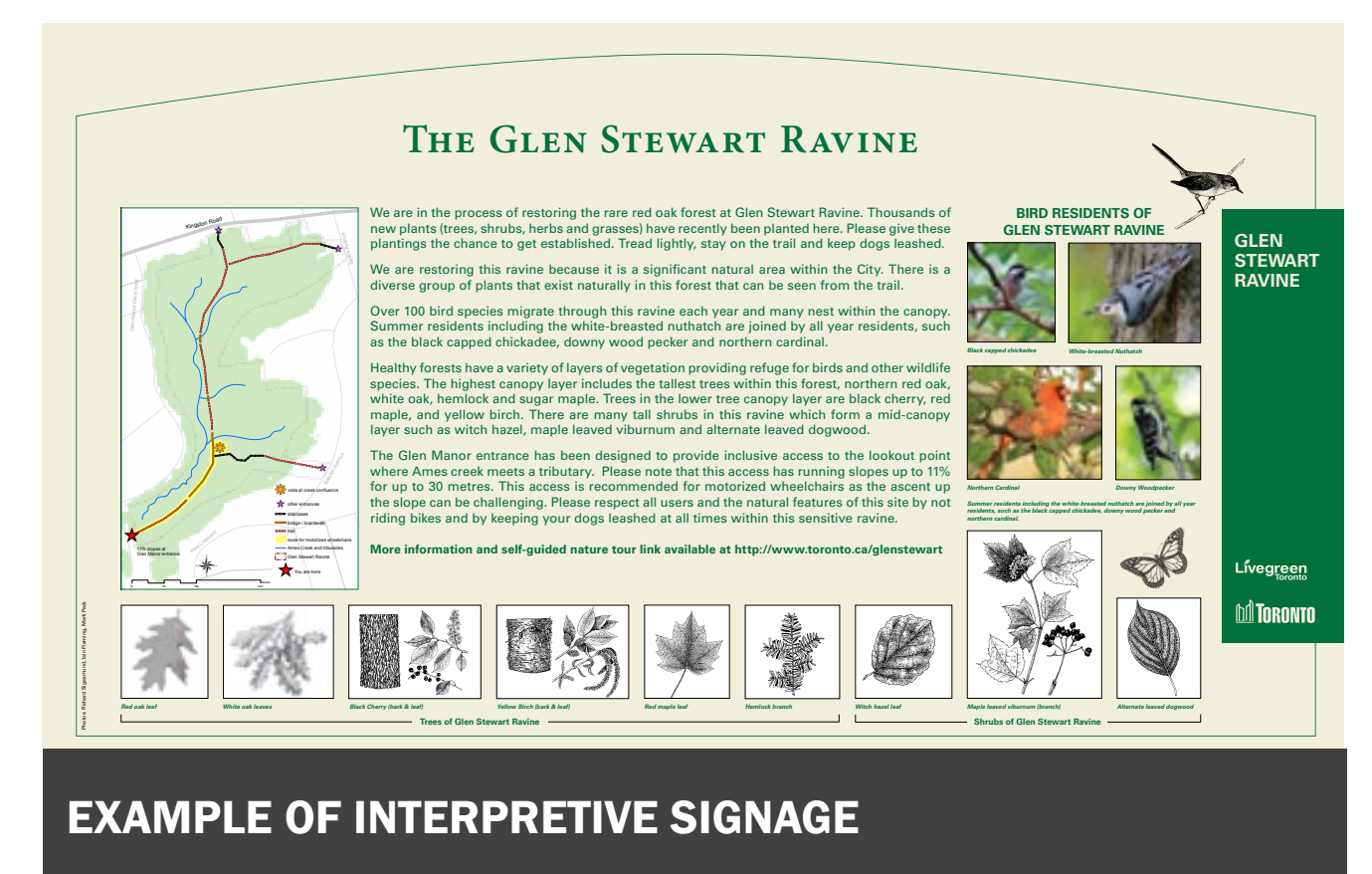
- A** Wood Chip or Grass Surface
- B** Cleared Area

CURRENT CONDITIONS

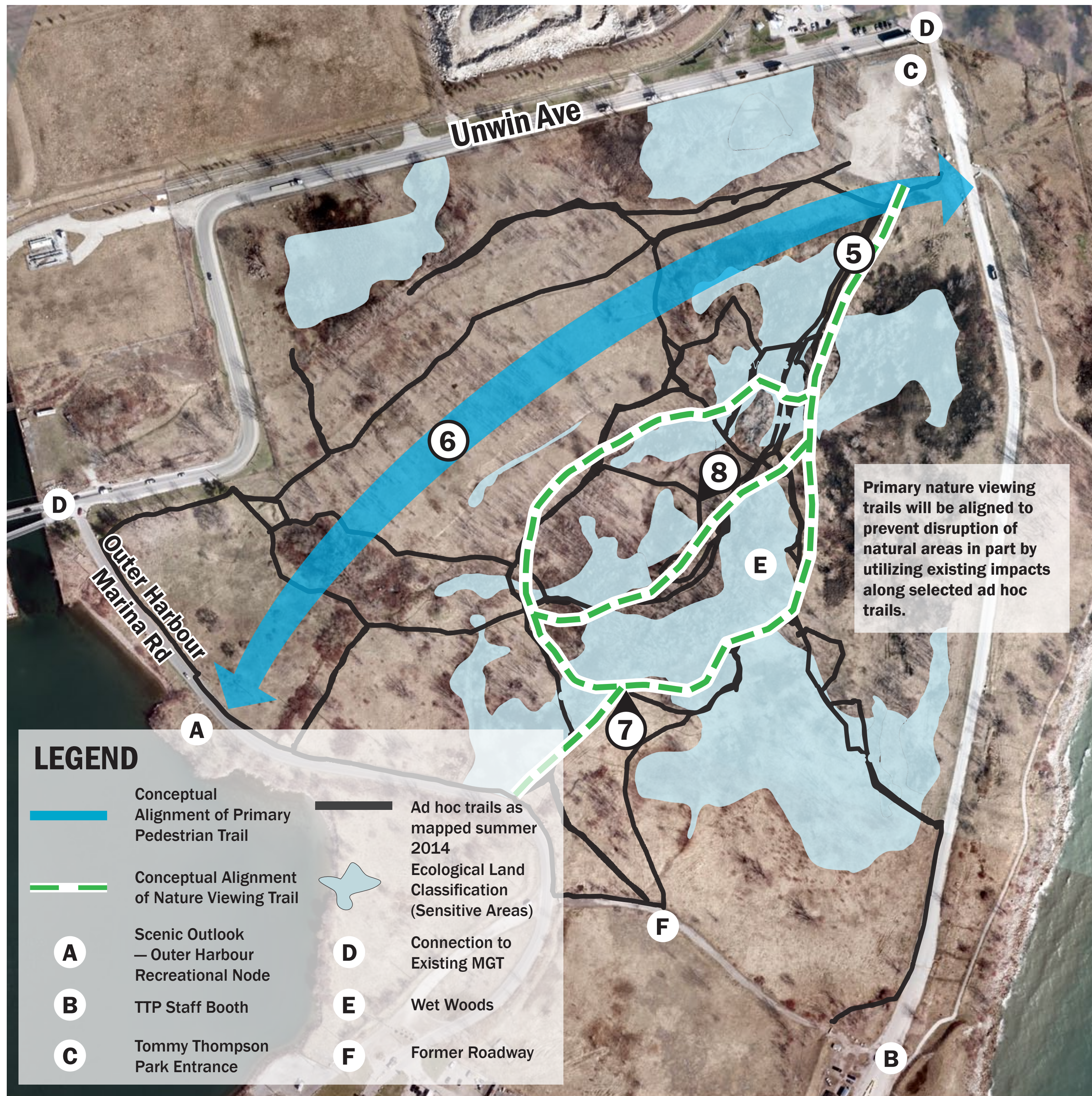


TRAIL PRECEDENTS



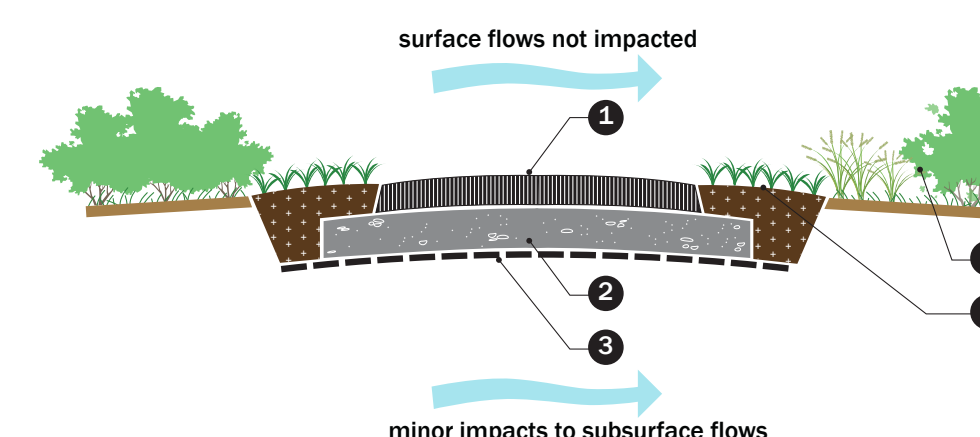


Issues – Perimeter Trails



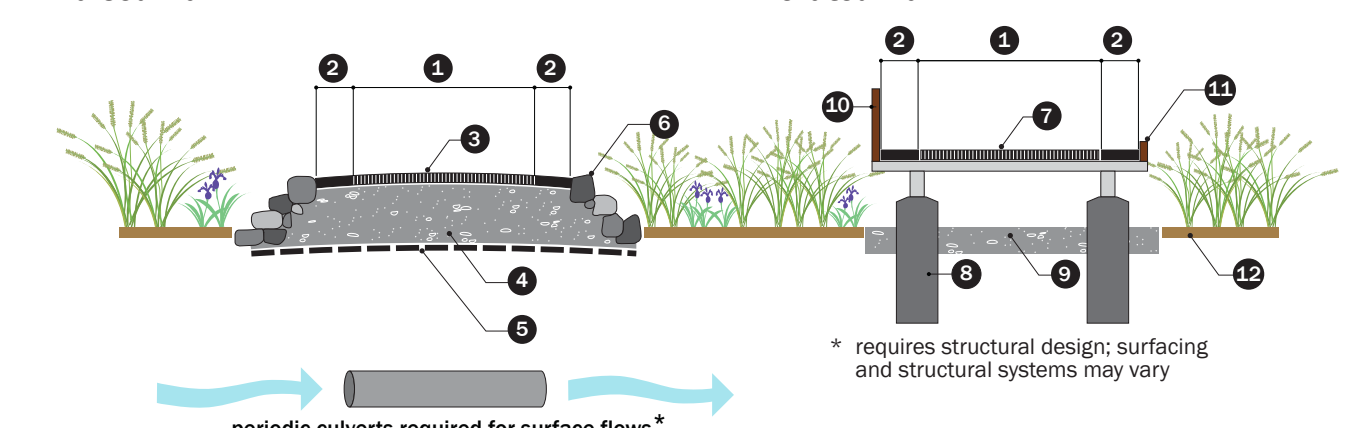
Strategies for Constructing Trails through Wet Areas (Toronto Multi-Use Trail Design Guidelines)

Typical Trail Construction in Wet Soils



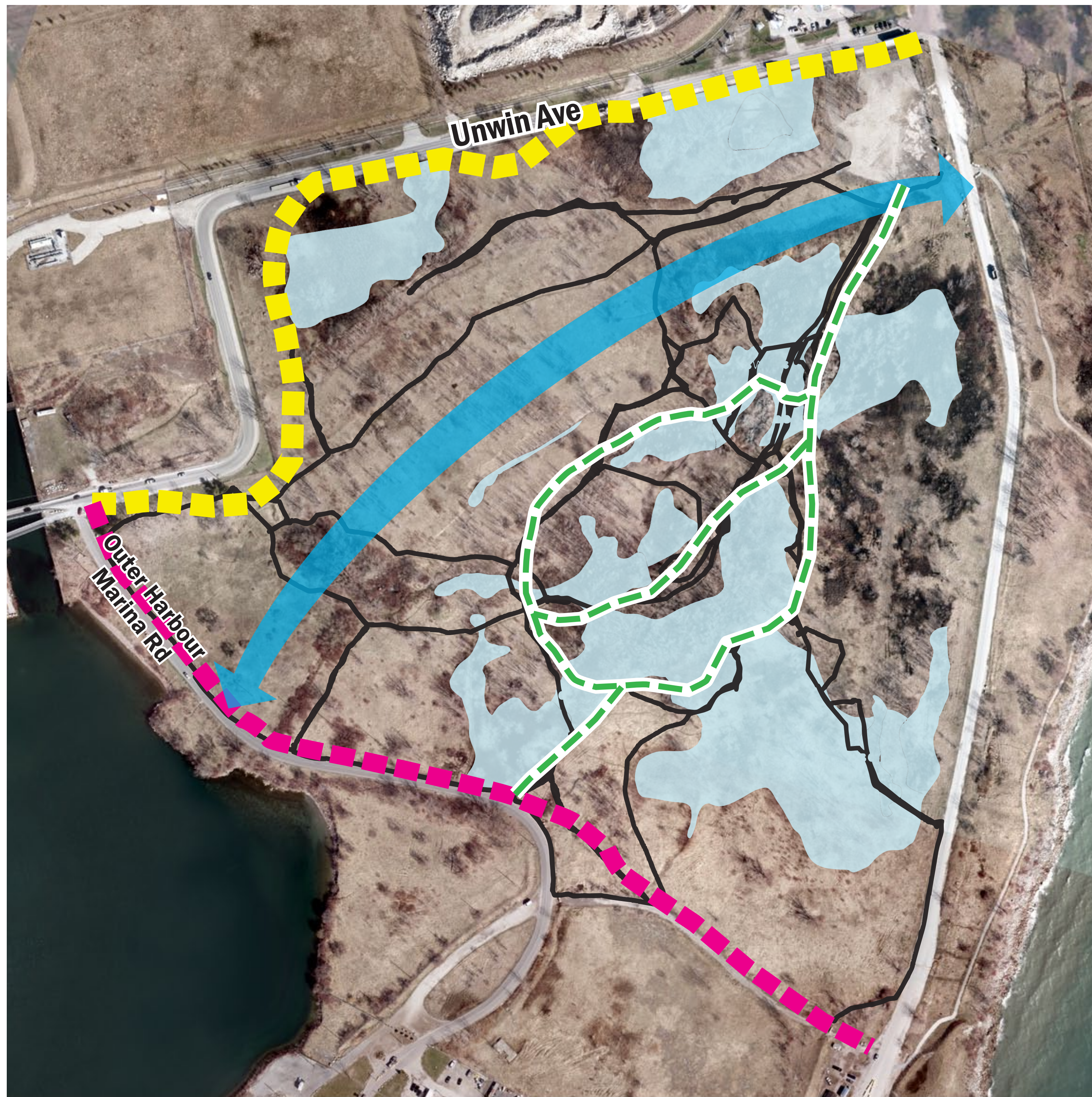
- 1 Trail surface - consider crowned trail for low-lying level areas with limited overland flows
- 2 Trail base - consider expanded depths, and use free-draining, compactible material such as Granular 'O'
- 3 Geosynthetics for improved stability - extend beyond limit of trail base
- 4 Backfill with native soils and restore with dense plantings of bareroot or container plants and over seeding
- 5 Use existing adjacent plant communities as a guide for designing restoration

Raised Trail



- 1 Trail width
- 2 Lateral clearance zone
- 3 Trail surface and paved shoulders (shoulders may be alternate material)
- 4 Trail base, built up in lifts (use free-draining, compactible materials such as Granular 'O')
- 5 Remove organic soils or at least uppermost vegetated layer and install geosynthetics for improved stability
- 6 Protect edges with rip-rap (shown) or armour stone. Conform to requirements for trails adjacent to slopes
- 7 Trail surface and lateral clearance areas (possibly two different materials)
- 8 Footings (requirements may vary)
- 9 Restoring work area below structure may not be possible; provide 50-75 mm size clear stone working surface
- 10 Guard where height is over 0.6 metres
- 11 Edge protection where height is below 0.6 metres
- 12 Adjacent undisturbed areas

* Can be used to separate and manage water levels in various sensitive and restoration



- **PUBLIC COMMENTS WILL BE COLLECTED VIA A SURVEY ON THE WATERFRONT TORONTO AND TRCA WEBSITES, AS WELL AS IN THE TTP STAFF BOOTH DURING MAY 2015**
- **TRAIL DESIGN WILL OCCUR IN JUNE AND JULY 2015**
- **FINAL PLAN PRESENTED TO THE PUBLIC AT AN OPEN HOUSE ON AUGUST 22, 2015 AT THE TTP BUTTERFLY FESTIVAL**
- **IMPLEMENTATION MAY BEGIN AS EARLY AS FALL 2015, WITH ADDITIONAL IMPLEMENTATION PHASES TO FOLLOW**

www.trca.on.ca

www.waterfrontoronto.ca



Community Meeting

Tuesday April 28, 2015
Fire Academy, 895 Eastern Ave.

Victor Ford and Associates Inc
Landscape Architects

Next Steps

BASELANDS TRAILS

9