

PORT  
20  
24

November 4, 2022

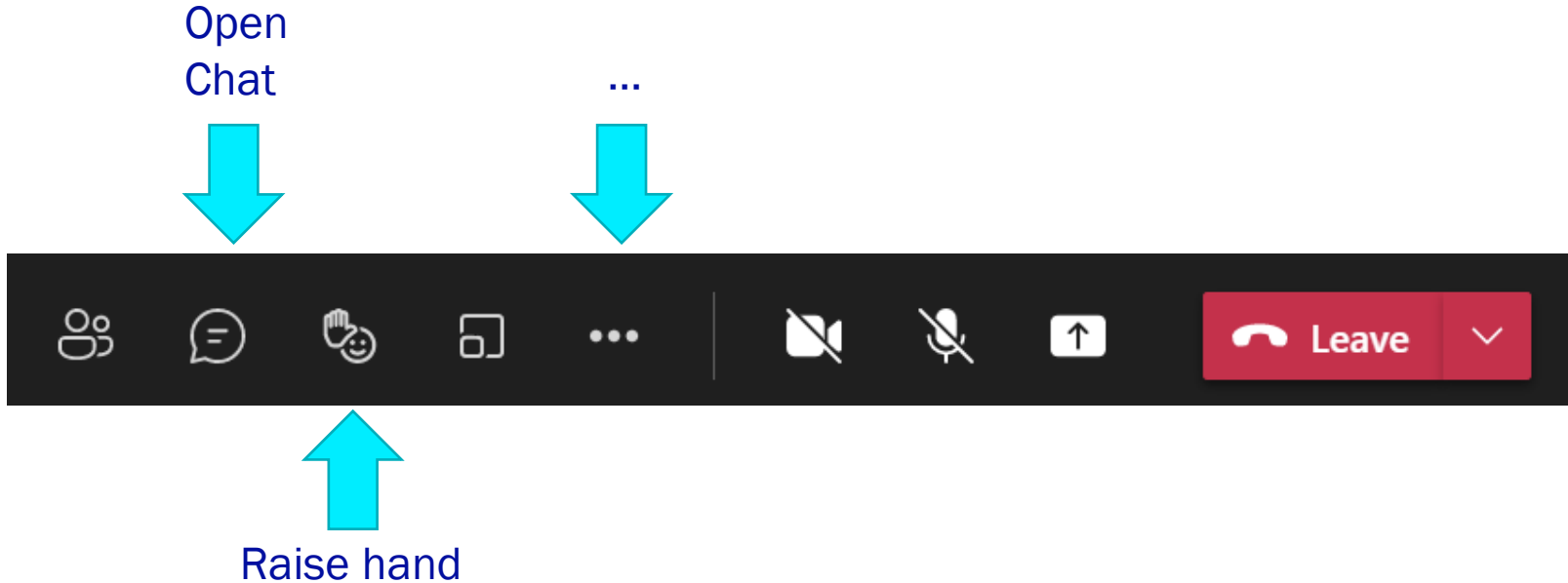
Port Lands Flood Protection  
& Lake Shore Boulevard East  
Construction Liaison  
Committee Meeting #20

LANDS



# Housekeeping

- Please keep your microphone muted when not speaking
- To make the presentation full-screen:
  - Click on ...
  - Scroll down and click 'Focus' and 'Full Screen'



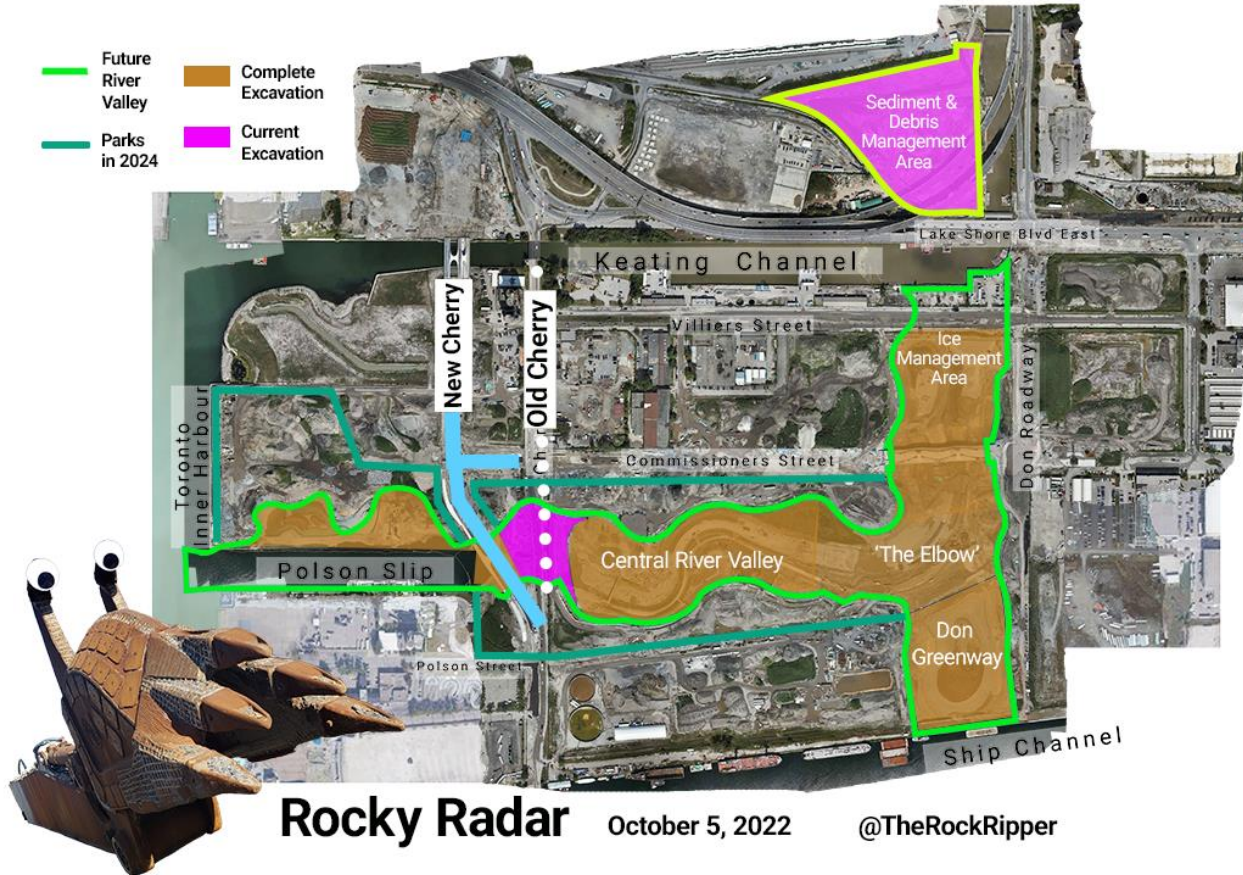
# Agenda

1. Port Lands Flood Protection Project Construction Update
2. Discussion: New Cherry Street alignment

# **Port Lands Flood Protection Construction Update**

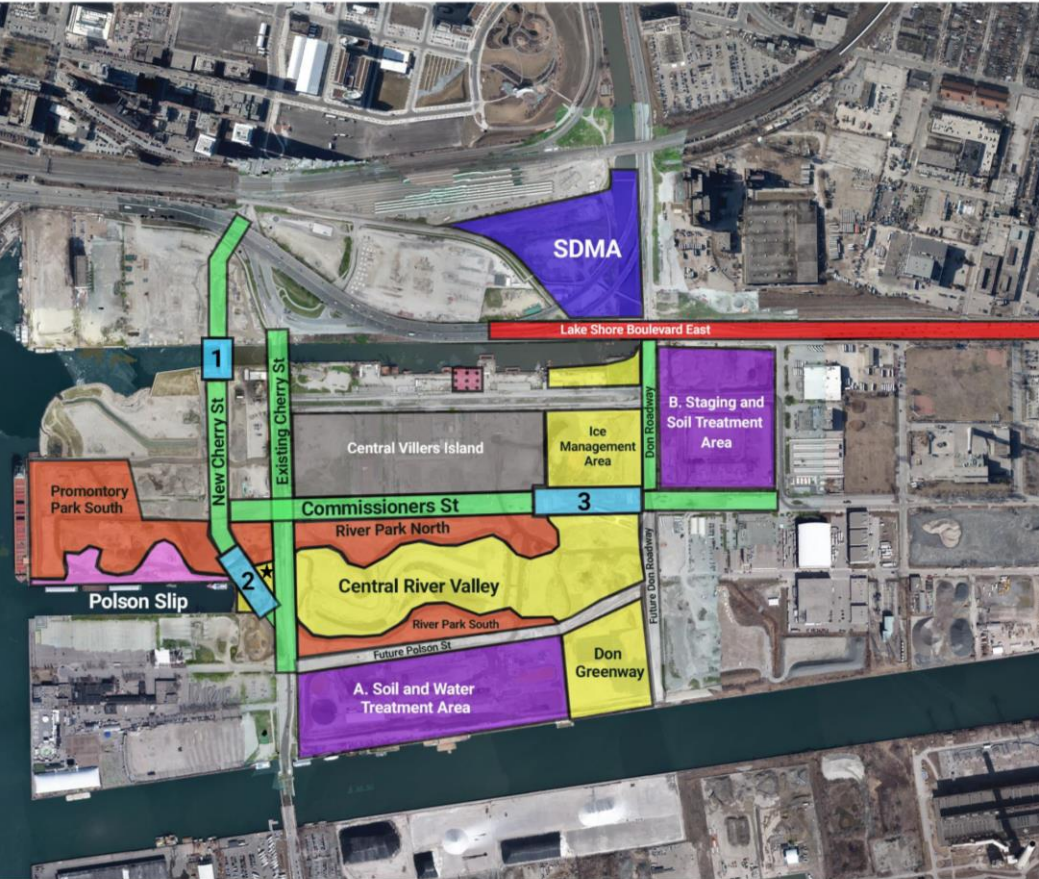
# Construction Update: Drone Footage

# Excavation Nearly Complete



# Upcoming Construction: What to Expect

# Upcoming Work



October - December 2022

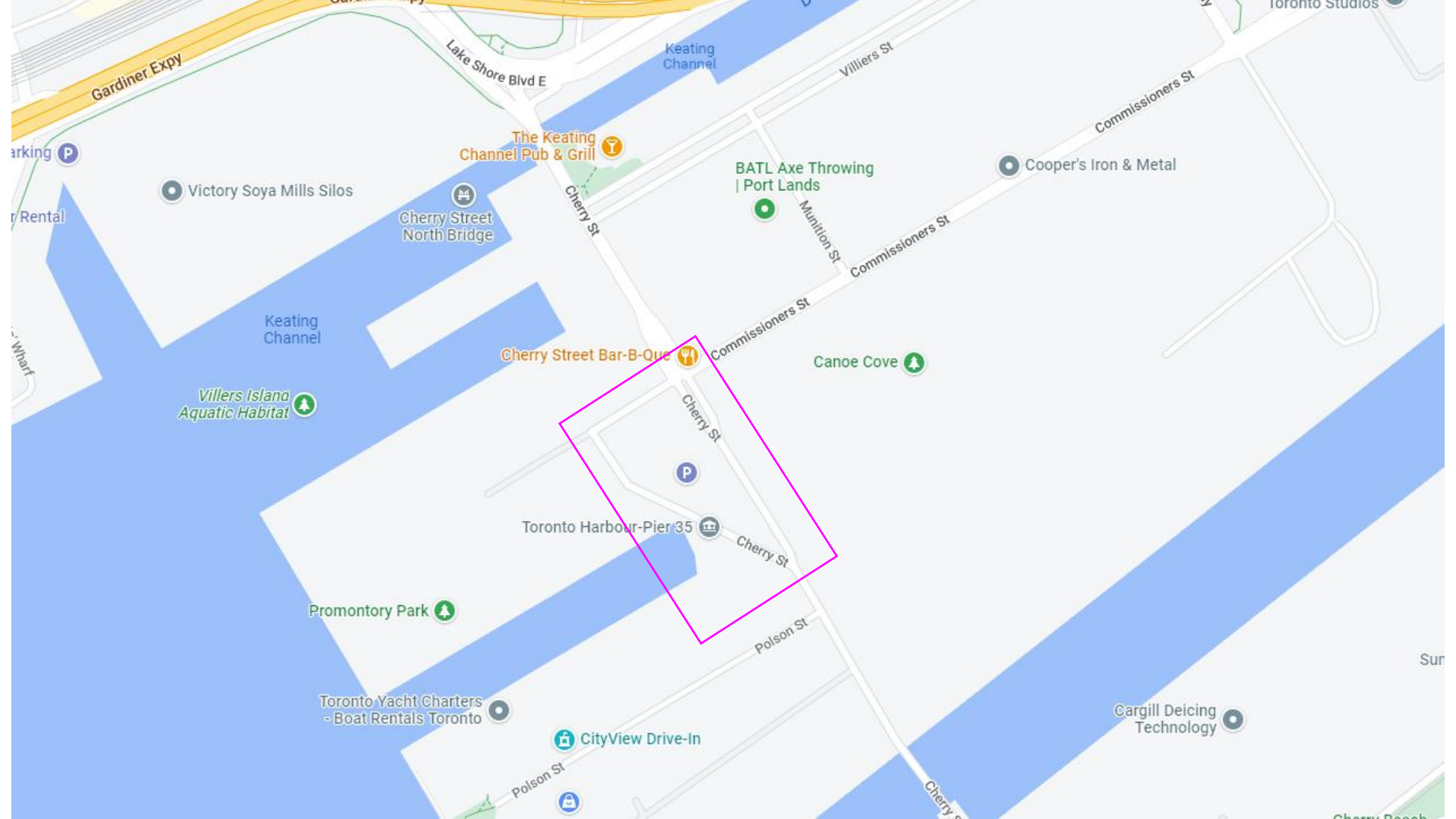
- Roads**
  - **New Cherry St & Lake Shore Intersection:** lane shifts, install and connect utilities, street lighting, temporary traffic controls, and paving
  - **New Cherry St:** install utilities, ground improvements, installation of green infrastructure, road base, paving. Opening of New Cherry St. between Commissioners St. and Polson St.
  - **Commissioners St:** install utilities, ground improvements, paving.
  - **Don Roadway & Future Don Roadway:** ground improvements, flood protection landform, dockwall installation
- Bridges**
  - **1 Cherry St North Bridge:** vehicular bridge concrete deck work, sidewalk concrete work and railings, road connection
  - **2 Cherry St South Bridge:** Bench installation
  - **3 Commissioners St Bridge:** additional concrete work, utility work, paving, benches, handrails
- Parks**
  - **Promontory Park South:** excavation, structural fill placement, surcharging
  - **River Park North:** surcharging, structural fill placement, park facilities infrastructure
  - **River Park South:** surcharging, structural fill placement, park facilities infrastructure
- River Valley**
  - **Central River Valley:** planting, install river finishes, install wetland habitat features, and dewatering. Cut off wall installation at the west plug (★)
  - **Ice Management Area:** install river finishes, install wetland habitat features, and dewatering
  - **North Ice Management Area:** subcontractor mobilization
  - **Don Greenway:** excavation, dewatering, install fish gate, habitat boulder, planting
- Polson Slip Naturalization**
  - Canoe Cove islands construction and stone finishes
- Staging and Treatment Areas**
  - **A:** Soil and water treatment
  - **B:** Construction staging and soil treatment
- Sediment & Debris Management Area (SDMA)**
  - Dredging and dockwall works
- Central Villiers Island**
  - Fill placement, temporary soil stockpiling and construction staging
- Utility Connection**
  - Excavation, microtunnelling and utilities installation
- Lake Shore Boulevard East Project**
  - Foundation work for new bridge
  - Road sub-base preparation and utilities installation



## Next Meeting

- Confirm updated dates for road closures/openings throughout the Port Lands
- Confirm any changes to the function of new Cherry Street

# Discussion & Feedback: New Cherry St



Gardiner Expy

Lake Shore Blvd E

Keating Channel

Villiers St

Commissioners St

The Keating Channel Pub & Grill

Victory Soya Mills Silos

BATL Axe Throwing | Port Lands

Cooper's Iron & Metal

Cherry Street North Bridge

Cherry St

Muniton St

Commissioners St

Keating Channel

Cherry Street Bar-B-Que

Canoe Cove

Villers Island Aquatic Habitat

Cherry St

P

Toronto Harbour-Pier 35

Cherry St

Promontory Park

Polson St

Toronto Yacht Charters - Boat Rentals Toronto

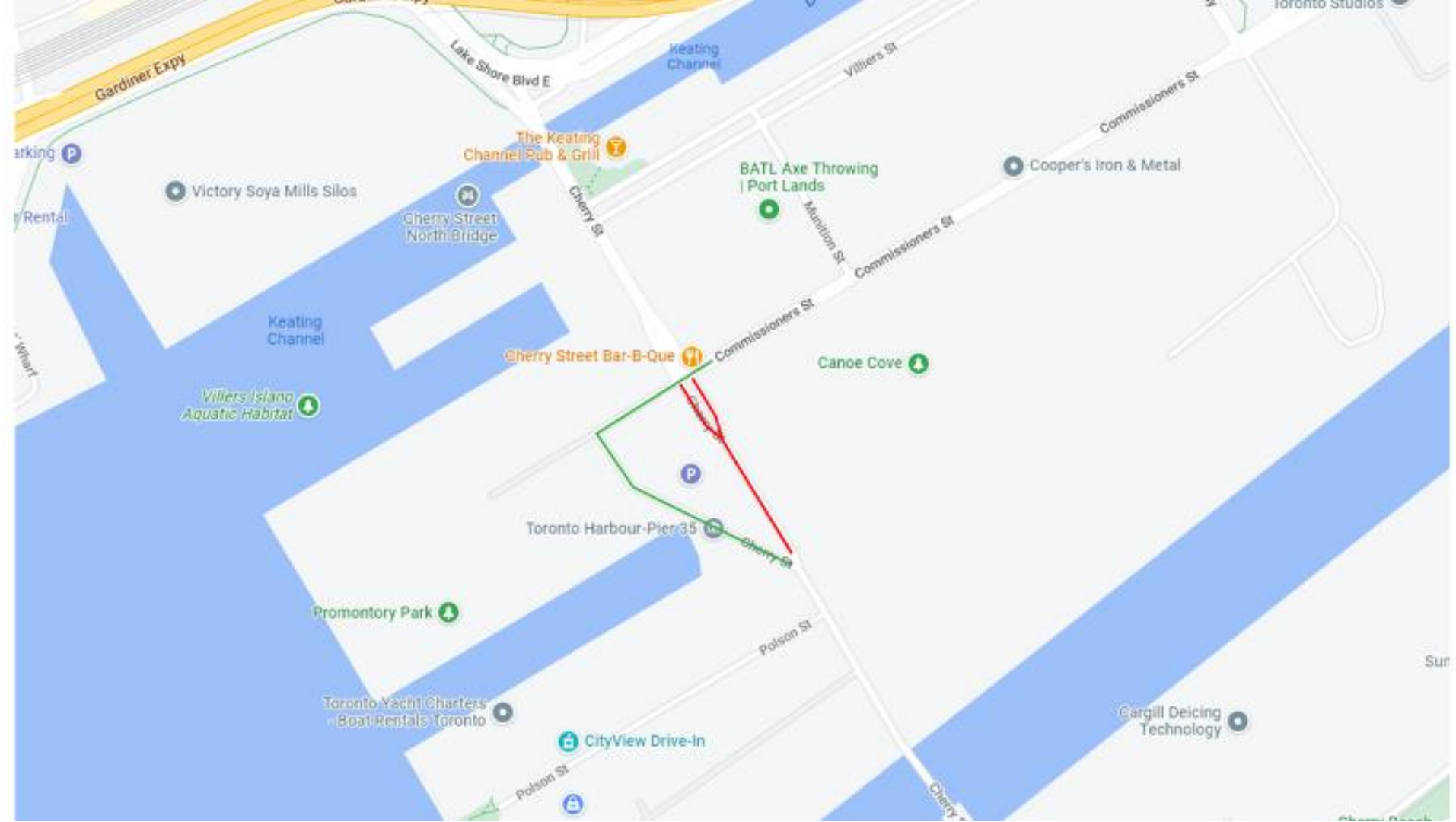
CityView Drive-In

Cargill Deicing Technology

Polson St

Cherry St

Cherry Beach



# Next Steps

# Adjustments to new Cherry Street Alignment

- Adjustments to signal timing
- Continued evaluation of intersection function
- Further adjustments if needed

## **The Construction Liaison Committee's role:**

- Sharing this information with the groups you represent, including how to contact us
- Sharing feedback with us on how the road is functioning

# Q&A