

PORTLANDS FLOOD PROTECTION

Port Lands Flood Protection & Lake Shore Boulevard

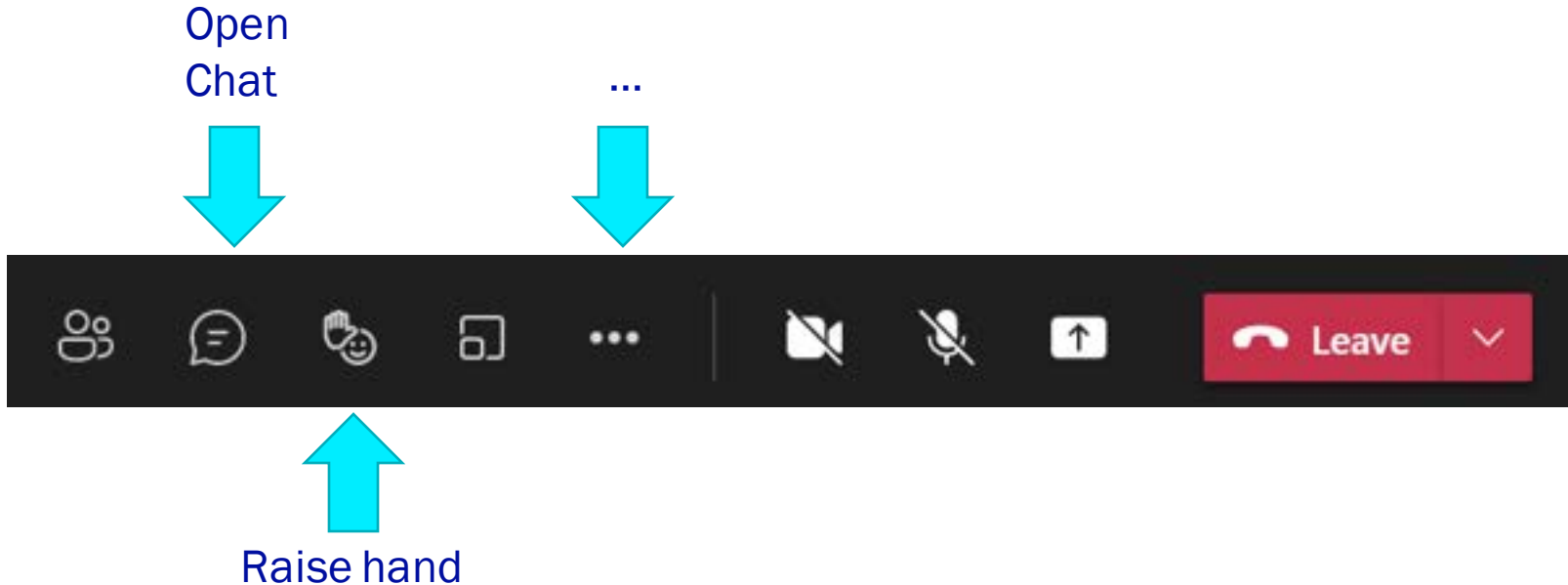
Construction Liaison Committee Meeting #22

February 21, 2024



Housekeeping

- Please keep your microphone muted when not speaking
- To make the presentation full-screen:
 - Click on ...
 - Scroll down and click 'Focus' and 'Full Screen'



Agenda

1. Port Lands Flood Protection & Lake Shore Boulevard East Project Overview
2. Construction Update
3. Road Openings
4. Upcoming Construction

Lake Shore Boulevard East Project Overview

Lake Shore Bridge South Half Open



Lake Shore Boulevard South Half Open



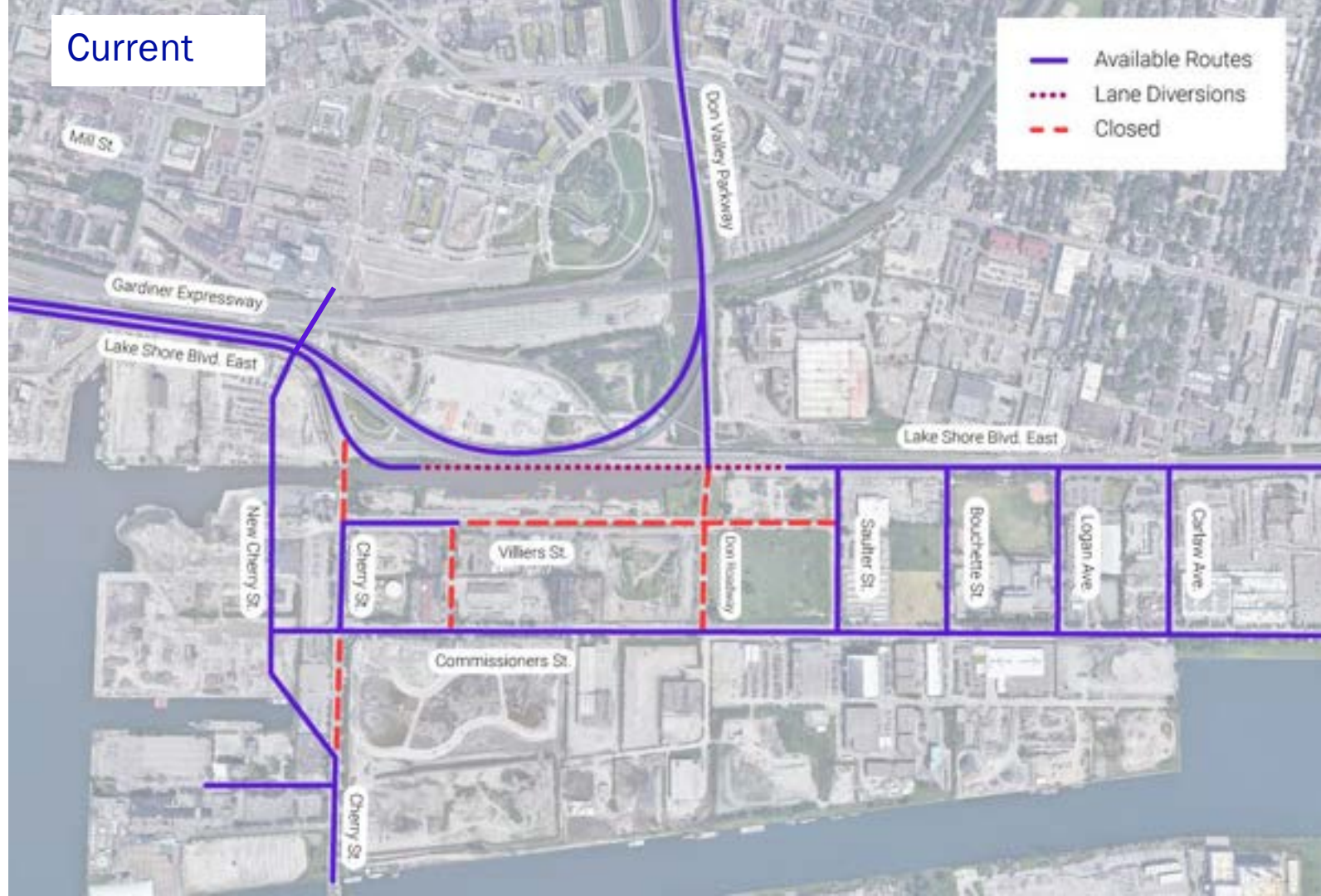
Port Lands Flood Protection Project Overview

Construction Update: Drone Footage

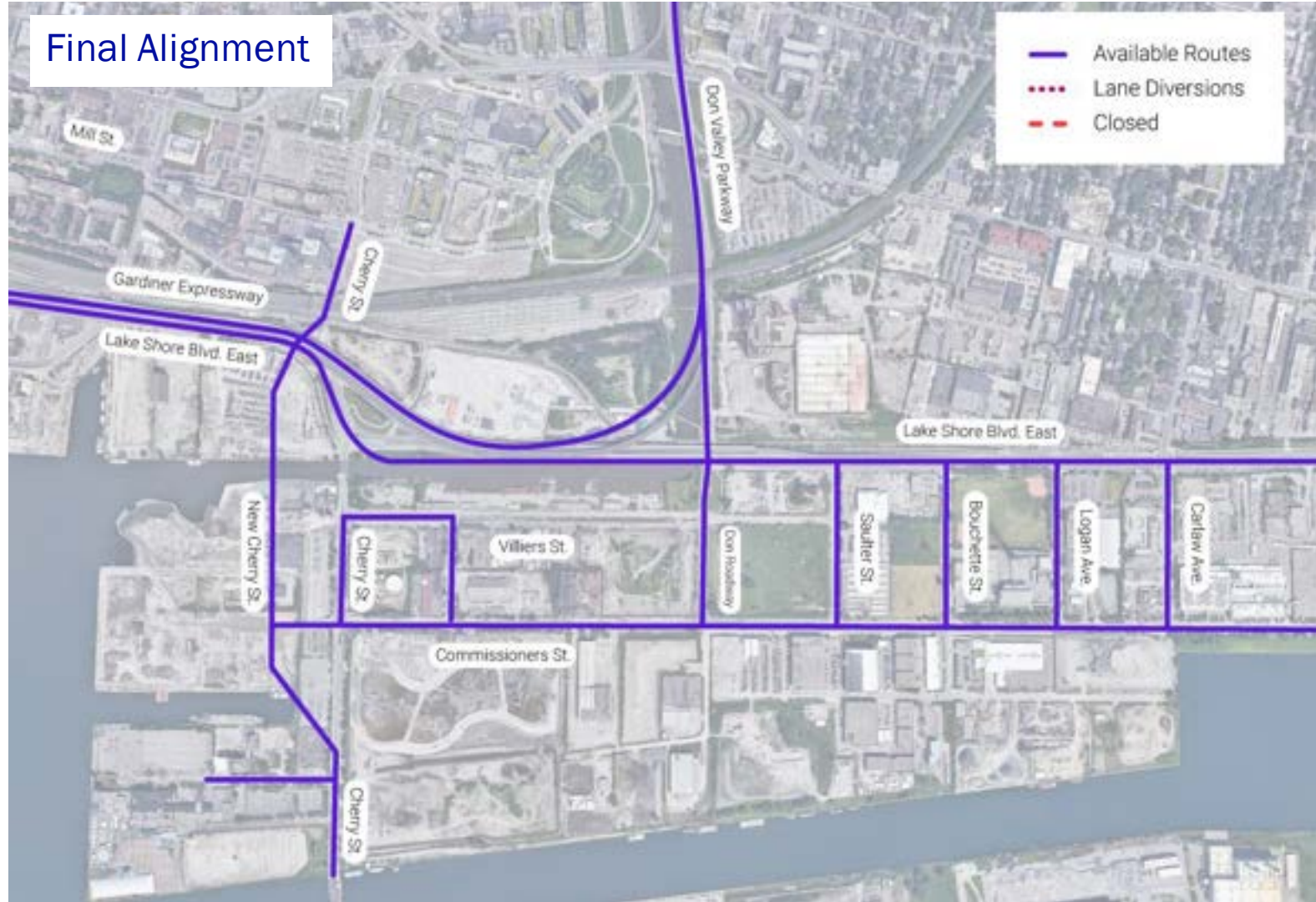


Road Openings

Current



Final Alignment









Feedback on the new Roads

What we've heard so far

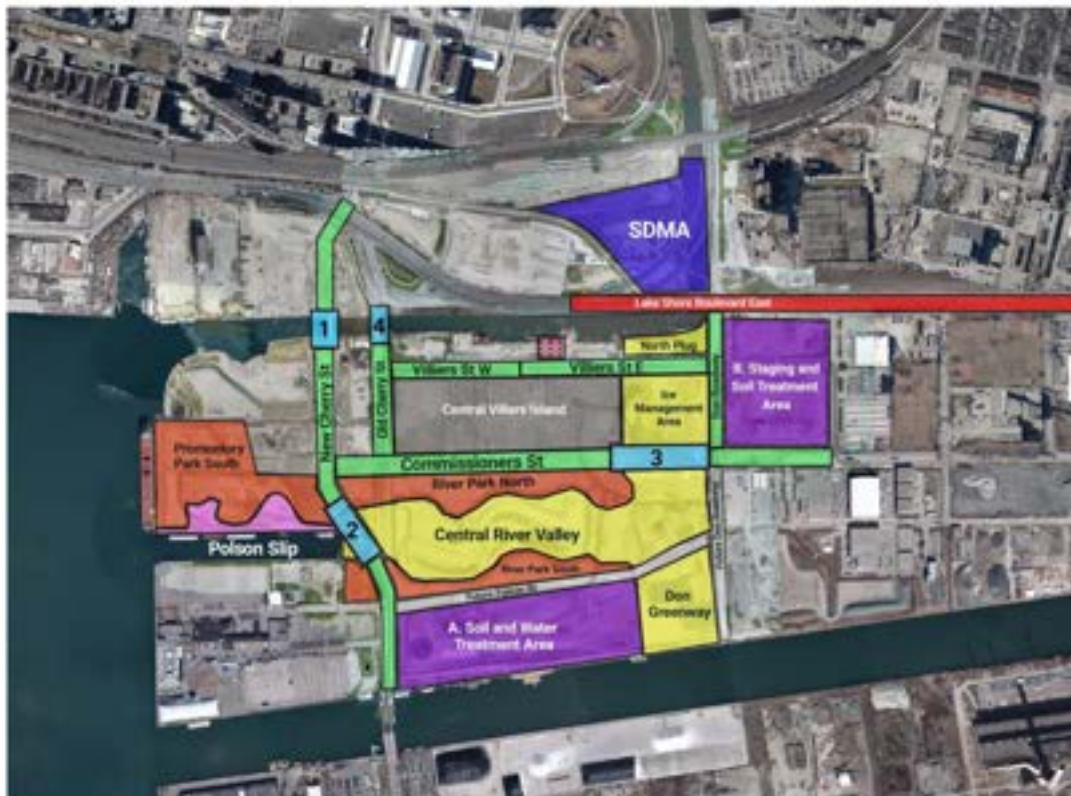
- Signal timing at New Cherry St. and Lake Shore Boulevard
- Signal timing at Commissioners St. and New Cherry St.
- Lack of sidewalks on south side of Commissioners St. Bridge
- Interaction between bike land and sidewalk on Commissioners Street

Next Steps

- Continue to monitor and adjust signal timing if necessary
- Some elements still to come: street furniture, toe-rails, etc.

Upcoming Construction: What to Expect

Upcoming Work



January – March 2024

- Roads**
 - New Cherry St between Lake Shore Boulevard and Commissioners Street: Open to vehicles, cyclists & pedestrians, street furniture installation and landscaping
 - Commissioners St: Open to vehicles, cyclists & pedestrians, street furniture installation and landscaping
 - Villiers St W: Close roadway east of Munition Street, create outside-sac just east of Munition Street
 - Villiers St E: Remove roadway, excavation, utilities work
 - Don Roadway & Future Don Roadway: Ground improvements, dockwall installation
- Bridges**
 - 1 Cherry St North Bridge: Open to vehicles, cyclists & pedestrians
 - 2 Cherry St South Bridge: Bench installation, lighting & electrical adjustments
 - 3 Commissioners St Bridge: Open to vehicles, cyclists and pedestrians, install benches
 - 4 Old Cherry Street Bridge: Demolition and removal
- Parks**
 - Promontory Park South: Surcharging, park infrastructure and services, stone feature placement
 - River Park North: Fine grading, playground installation, paths & features construction, park infrastructure and servicing
 - River Park South: Surcharging, fine grading, stone feature construction, bike bridge foundations installation
- River Valley**
 - Central River Valley & Ice Management Area: Inundate river
 - North Plug: Excavation
 - Don Greenway: Maintenance and preparation for south plug removal, carp gate construction
- Poison Slip Naturalization**
 - Cancee Cove islands and stone finishes
- Staging and Treatment Areas**
 - A: Water treatment and soil stockpiling and staging
 - B: Soil stockpiling and staging
- Sediment & Debris Management Area (SDMA)**
 - Dockwall works and wet utility installation
- Central Villiers Island**
 - Fill placement, temporary soil stockpiling and construction staging
- Utility Connection**
 - Electrical and mechanical works for the Interim Sanitary Pumping Station (ISPS) and Stormwater Treatment Facility (SMTF)
- Lake Shore Boulevard East Project**
 - Bridge pre-construction and site preparation
 - North half of bridge removal, bridge foundations and substructure works

Q&A