

PORT LANDS FLOOD PROTECTION

Port Lands Flood Protection Construction Liaison Committee Meeting #7

July 4, 2019



Agenda

1. Introductions
2. Construction Update: Cherry Street Stormwater and Lakefilling
3. Construction Update: Port Lands Flood Protection
4. Overview: Inner Port Lands Area Roads Construction
5. Discussion and Feedback

Project Overview

Port Lands Flood Protection - 2024





September 2018



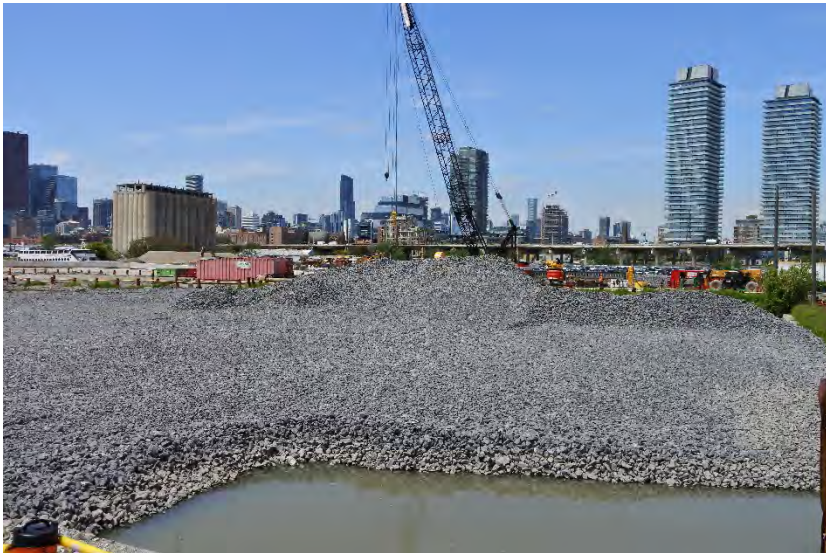
June 2018



uture River Valley

Construction Update: Cherry Street Stormwater and Lakefilling

Ongoing Construction: New Cherry Street Alignment



Ongoing Construction: Lakefilling



Ongoing Construction: Marine Landscaping (Forming Habitats and Shoreline)



Ongoing Construction: Marine Terminal 35 Demolition and Material Salvage





North Cove

West Cove

Dockwall

Lakefilling cell 3

Lakefilling cell 1

Lakefilling cell 2

June 2019

Construction Update: Port Lands Flood Protection

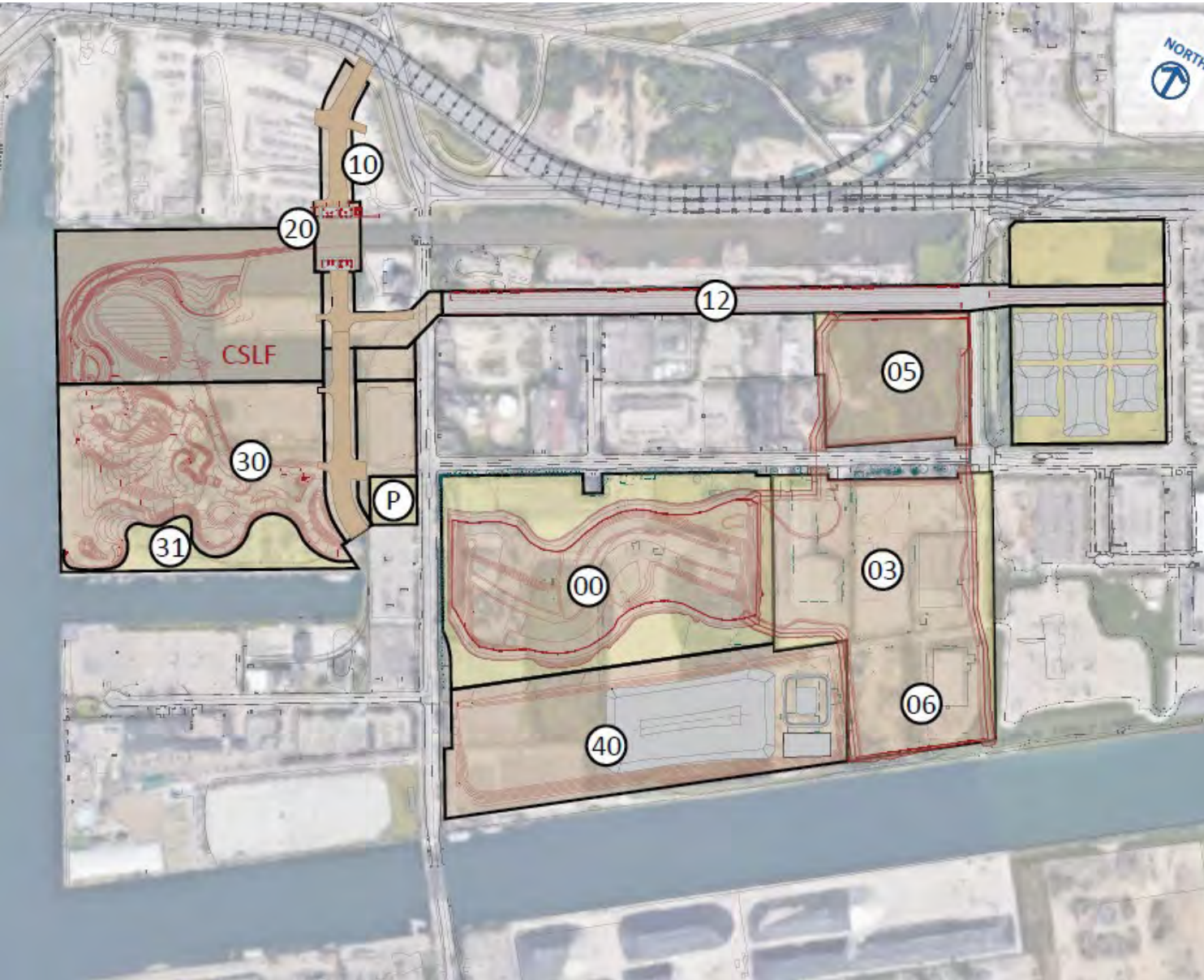


June 2019

Ongoing Work: Excavation



Upcoming Construction: July to September 2019



AREA 10

- Cherry Street realignment: demolition, site preparation

AREA 20

- New Cherry Street Bridge - Bridge sub-structure & Foundation

AREA 30

- Demolition: parking lots, buildings
- Site preparation

AREA 40

- Stockpiling of soil and soil treatment facility

AREA 00

- Cut-off wall – Caisson drilling
- Excavation

AREA 03, 05 & 06

- Site preparation, demolition
- Excavation
- Environmental controls

AREA 12

- Road modifications and improvements

MONITORING (SITE-WIDE):

- Air, dust, noise, odour, weather
- Turbidity
- Surface-water quality
- Vibration
- Soil and groundwater

Traffic Management Plan – Inner Port Lands Area

Final Street Configuration



Three Distinct Streets for the Port Lands

Cherry Street

An Urban Gateway to the Port Lands



A View Looking Southwest on East Side of New Cherry Street



- 1 Sidewalk (min. 3.0 m)
- 2 Social Spaces
- 3 Open pit planters with robust urban tolerant planting. The planter is one component of the green infrastructure
- 4 Dedicated Transit Lane

B View Looking East of New Cherry Street

Commissioners Street

The Park Edge



C View Looking West on North Side of Commissioners Street



- 1 Active and urban edge on the north side responding to future development
- 2 A dense green edge and relaxed character for the south side responds to the park's character and programming
- 3 Sidewalk (min. 3.0 m)
- 4 Bioswale
- 5 Mid-block crossing
- 6 Dedicated Transit Lane
- 7 Vehicular lay-by

D View Looking South of Commissioners Street

Don Roadway

The River Edge



E View Looking South on West Side of Don Roadway

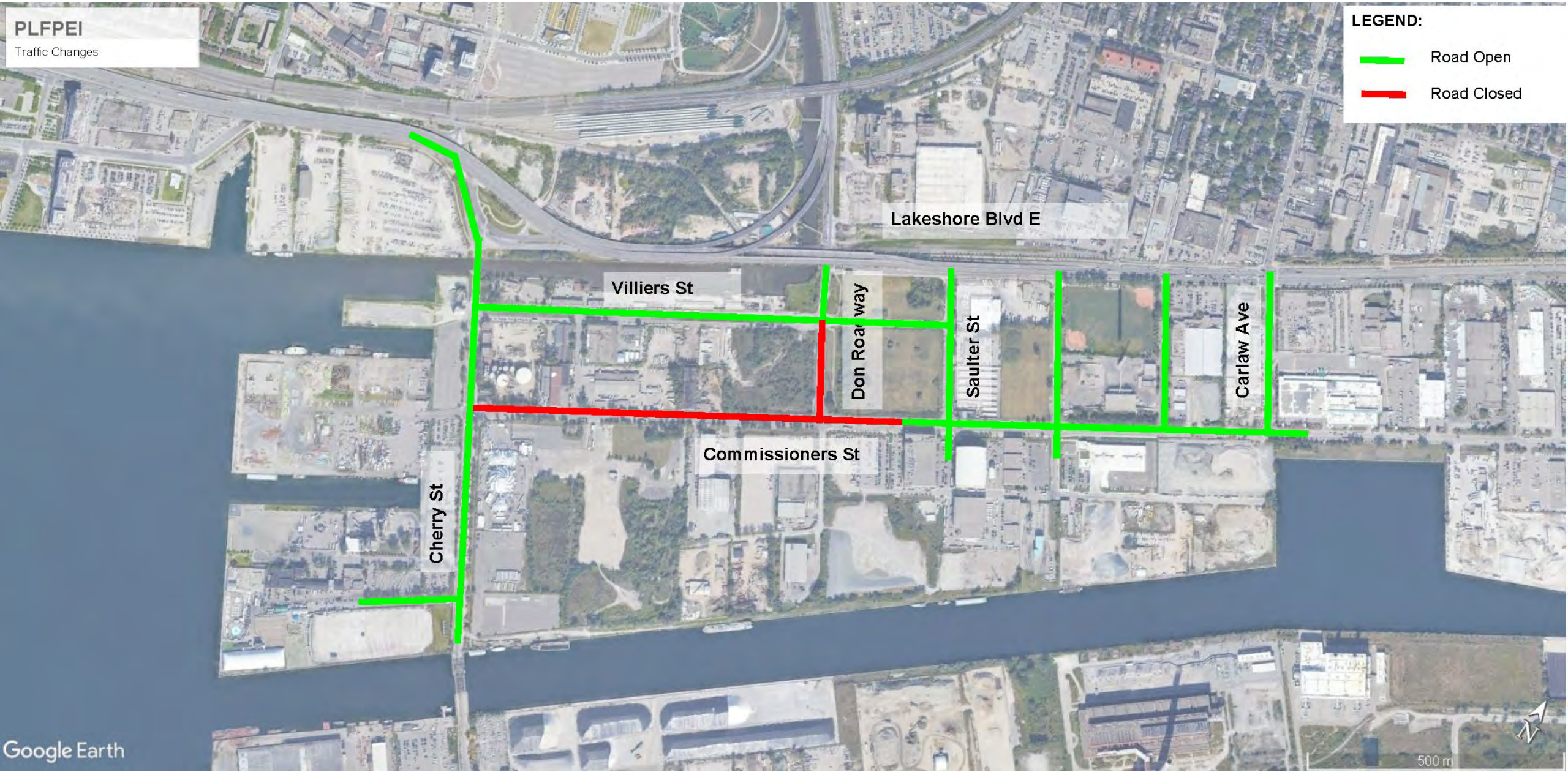


- 1 Lower Don River Trail (3.6 m)
- 2 Sidewalk (min. 2.3 m)
- 3 Planted Boulevard. Planting inspired by the river ecology.
- 4 Seating/Viewing Area
- 5 Temporary Landscape
- 6 Reclaimed and repurposed railway tracks
- 7 Hydroelectric Transmission Corridor

F View Looking East of Don Roadway

Traffic Plan

Traffic Plan: Q4 -2019

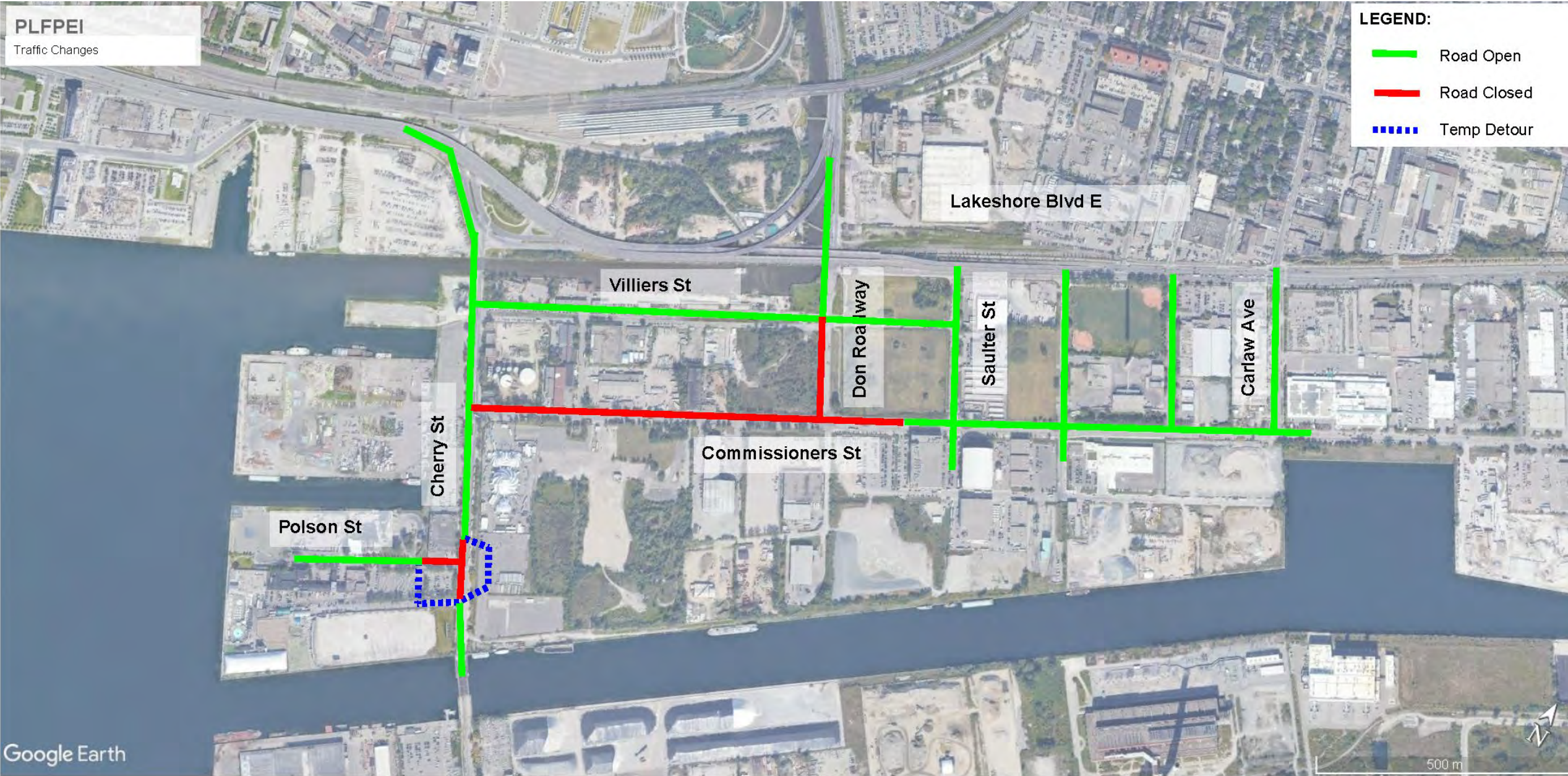


Traffic Plan: Q1 -2020

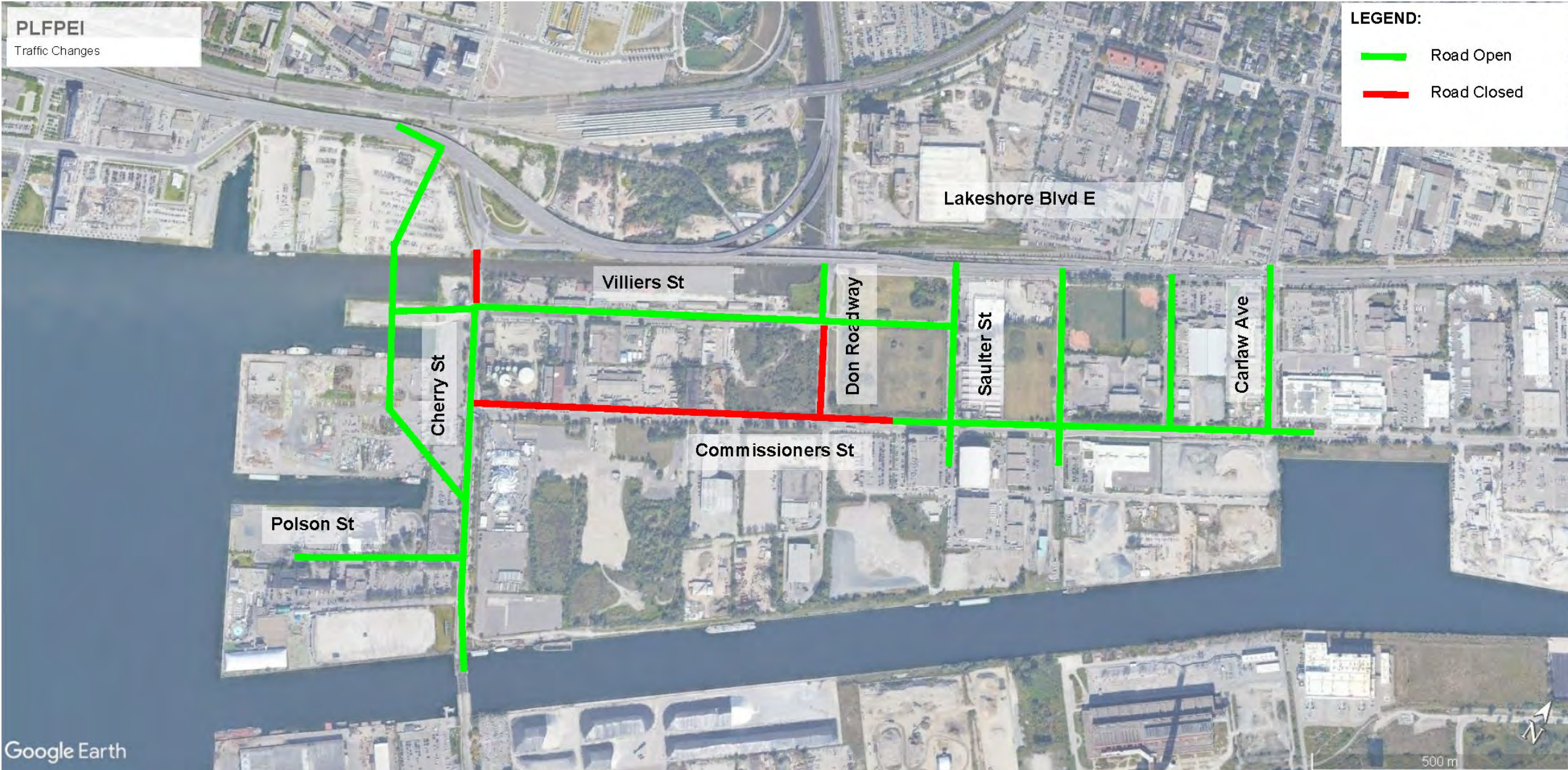
PLFPEI
Traffic Changes

LEGEND:

- Road Open
- Road Closed
- - - Temp Detour



Traffic Plan: Q4 -2021



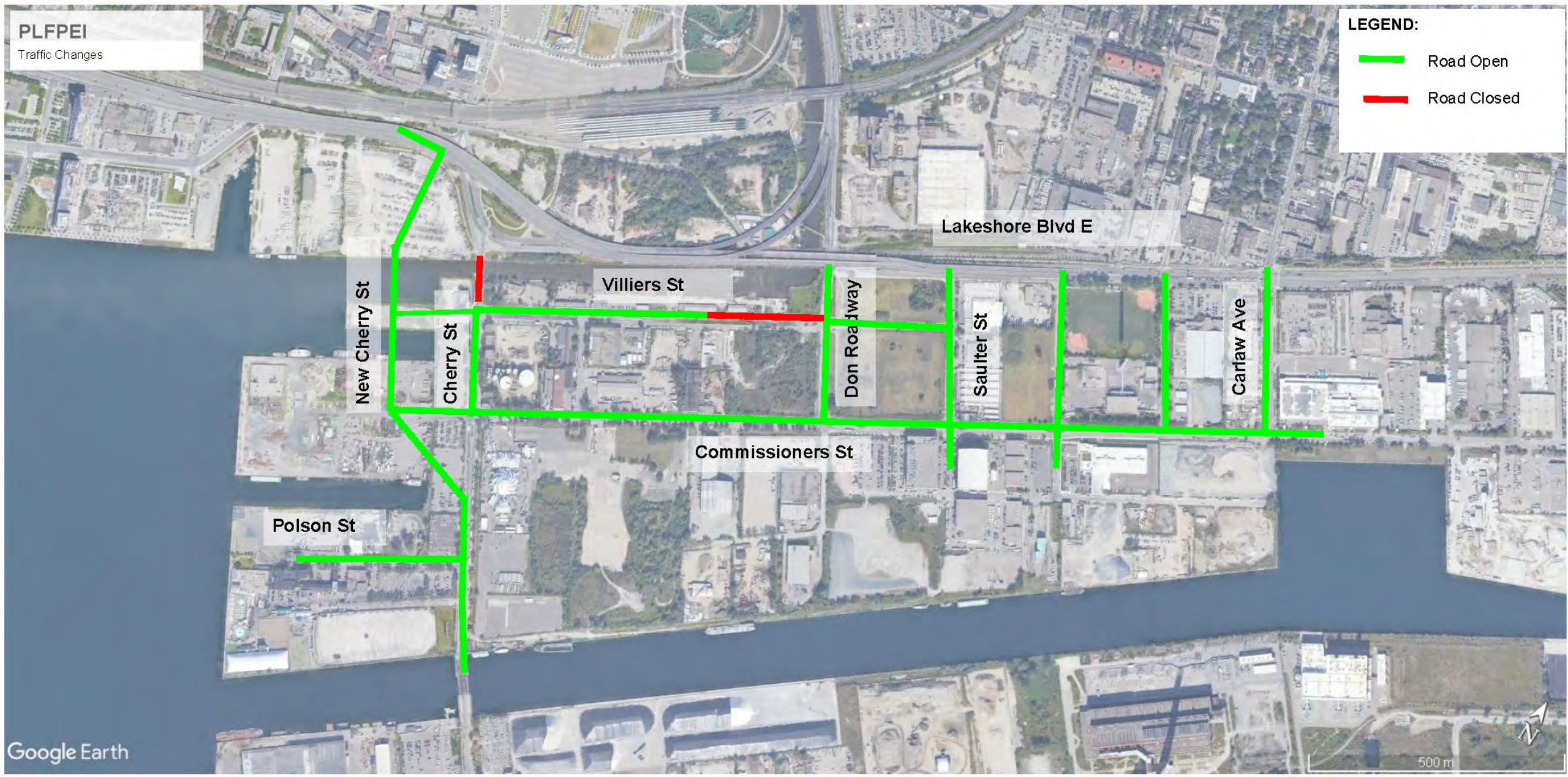
Traffic Plan: Q2 -2022

PLFPEI
Traffic Changes

LEGEND:

Road Open

Road Closed



Villiers Street – Interim Condition

Discussion and Feedback