

PORT LANDS FLOOD PROTECTION

Port Lands Flood Protection Construction Liaison Committee Meeting #8
September 19, 2019



Agenda

1. Introductions
2. Construction Update: Cherry Street Stormwater and Lakefilling
3. Construction Update: Port Lands Flood Protection
4. Upcoming Construction Work
5. Overview: Inner Port Lands Area Roads Construction
6. Discussion and Feedback

Project Overview

Port Lands Flood Protection - 2024





September 2018



August 2019



Future River Valley

Construction Update: Cherry Street Stormwater and Lakefilling

Ongoing Construction: Lakefilling

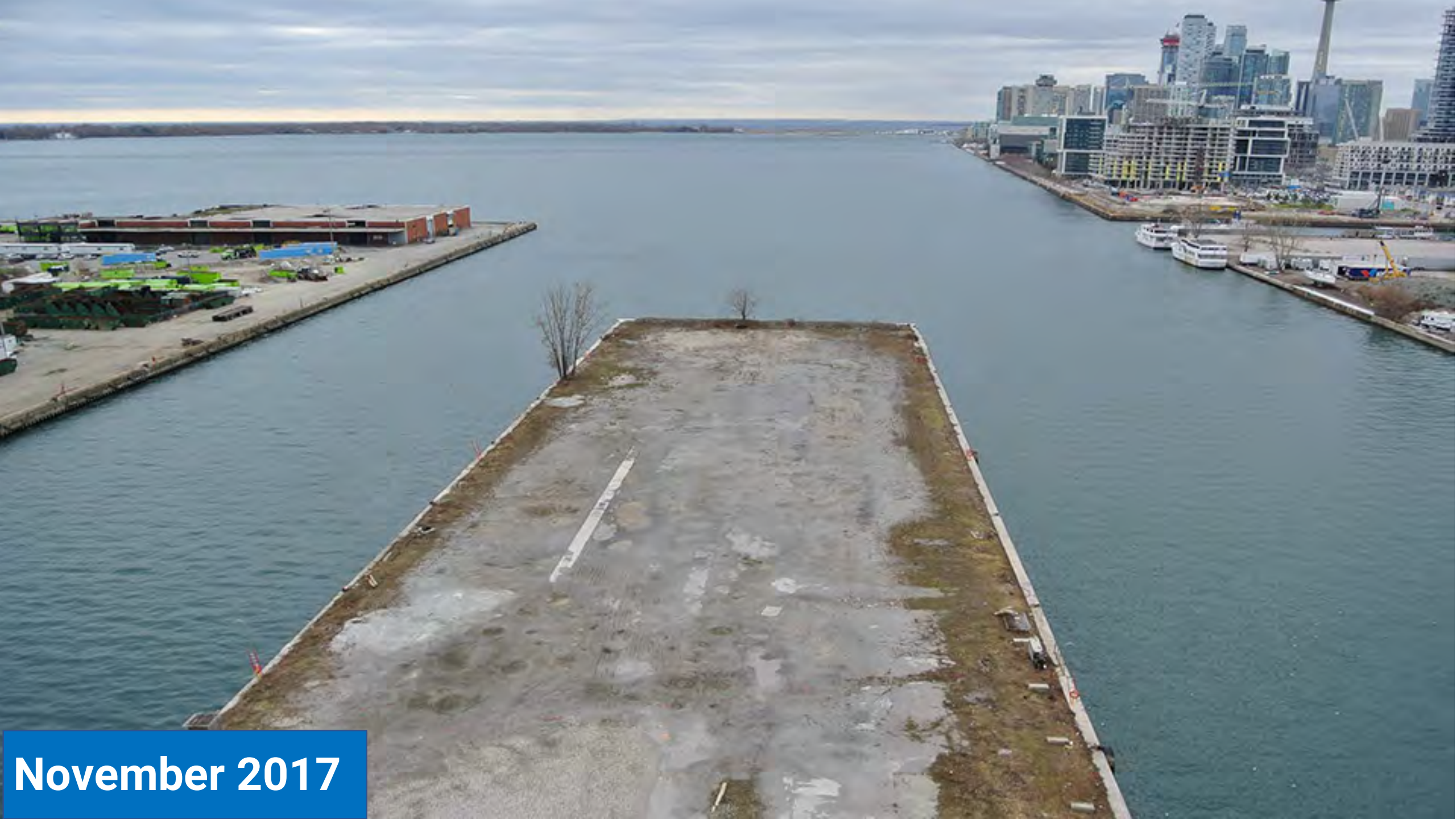


Ongoing Construction: Marine Landscaping (Forming Habitats and Shoreline)

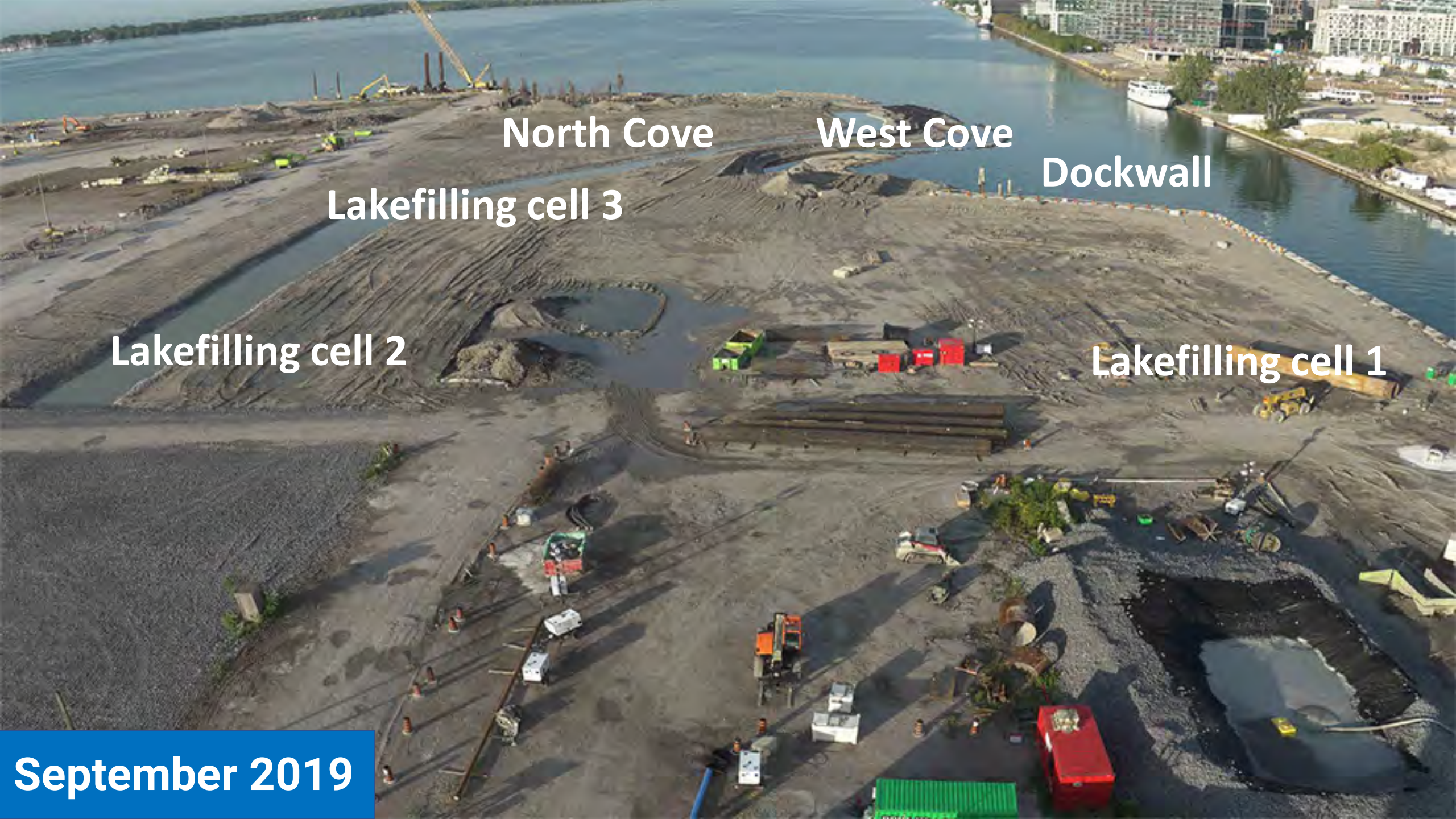


Construction: Marine Terminal 35 Demolition and Material Salvage





November 2017



North Cove

West Cove

Dockwall

Lakefilling cell 3

Lakefilling cell 2

Lakefilling cell 1

September 2019

Construction Update: Port Lands Flood Protection



September 2019

Ongoing Work: Excavation



Ongoing Construction: Demolition and Material Salvage



Ongoing Construction: New Cherry Street North Bridge



Ongoing Construction: New Cherry Street North Bridge

SPECIAL JURY AWARD FOR CATALYTIC INFRASTRUCTURE

AWARD OF MERIT

Port Lands Flood Protection & Enabling Infrastructure Project (PLFPEIP) - Bridge Design and Engineering

Keating Channel/Dan River and Lake Shore Boulevard to the north, the Toronto Inner Harbour to the west, Ashbridge's Bay to the east, and Lake Ontario and Tommy Thompson Park to the south

Project Team

Entuitive: Consulting Engineers

Prime Consultant and Bridge Structural Engineer of Record

Grimshaw Architects

Architects

Quinn Design Associates

Landscape Architects

Planmac Engineering Inc.

Civil and Marine Engineers

Mulvey & Banani International Inc.

Lighting and Electrical Engineers

Schlaich Bergermann Partner

Bridge Structural Designer

Ken Greenberg

Urban Planning

Ellis Don

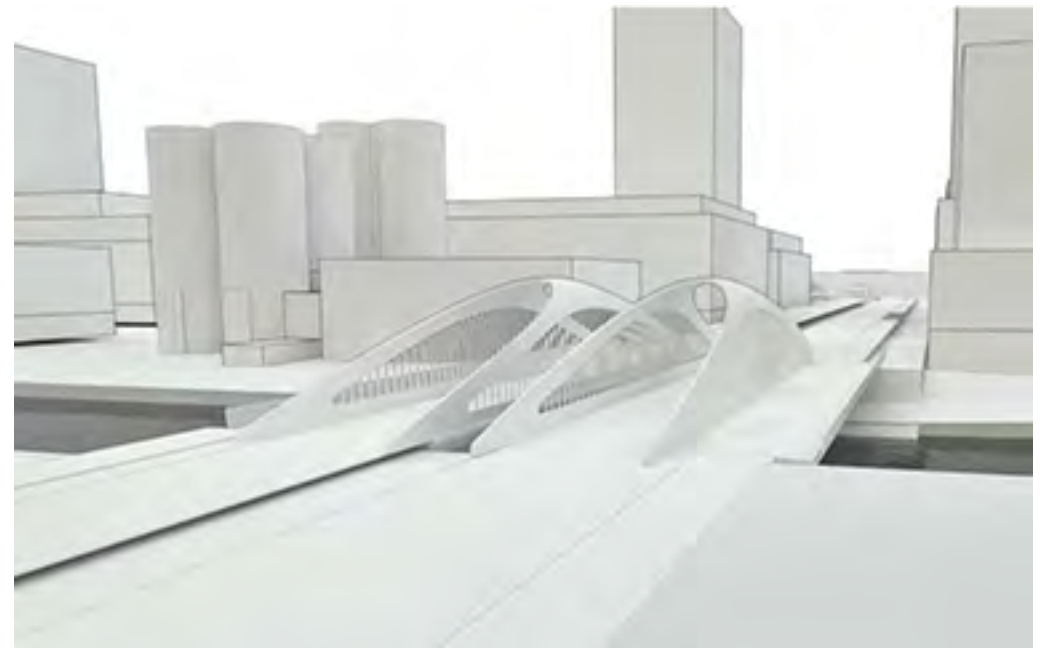
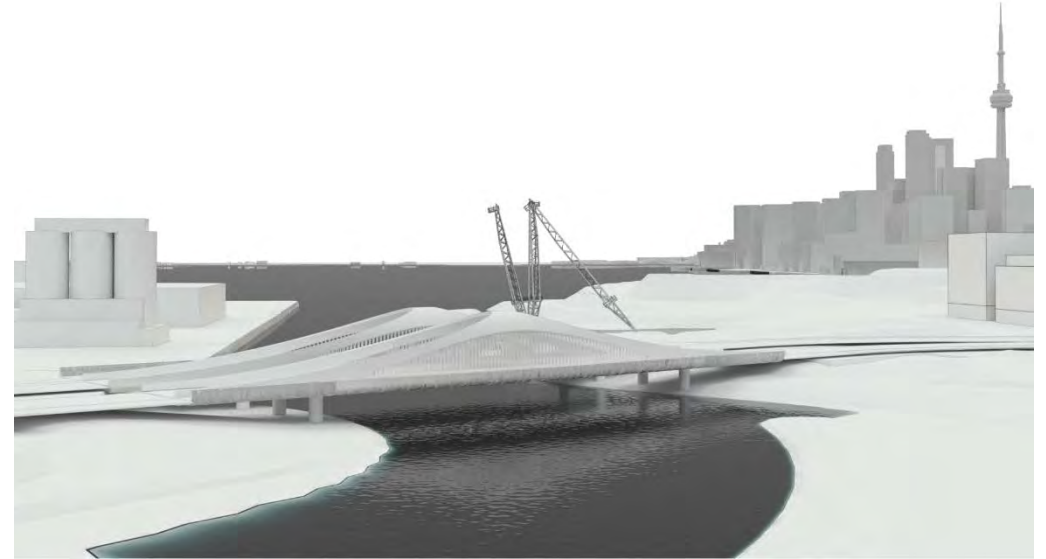
Construction Manager

Developer/Owner/Client

Waterfront Toronto

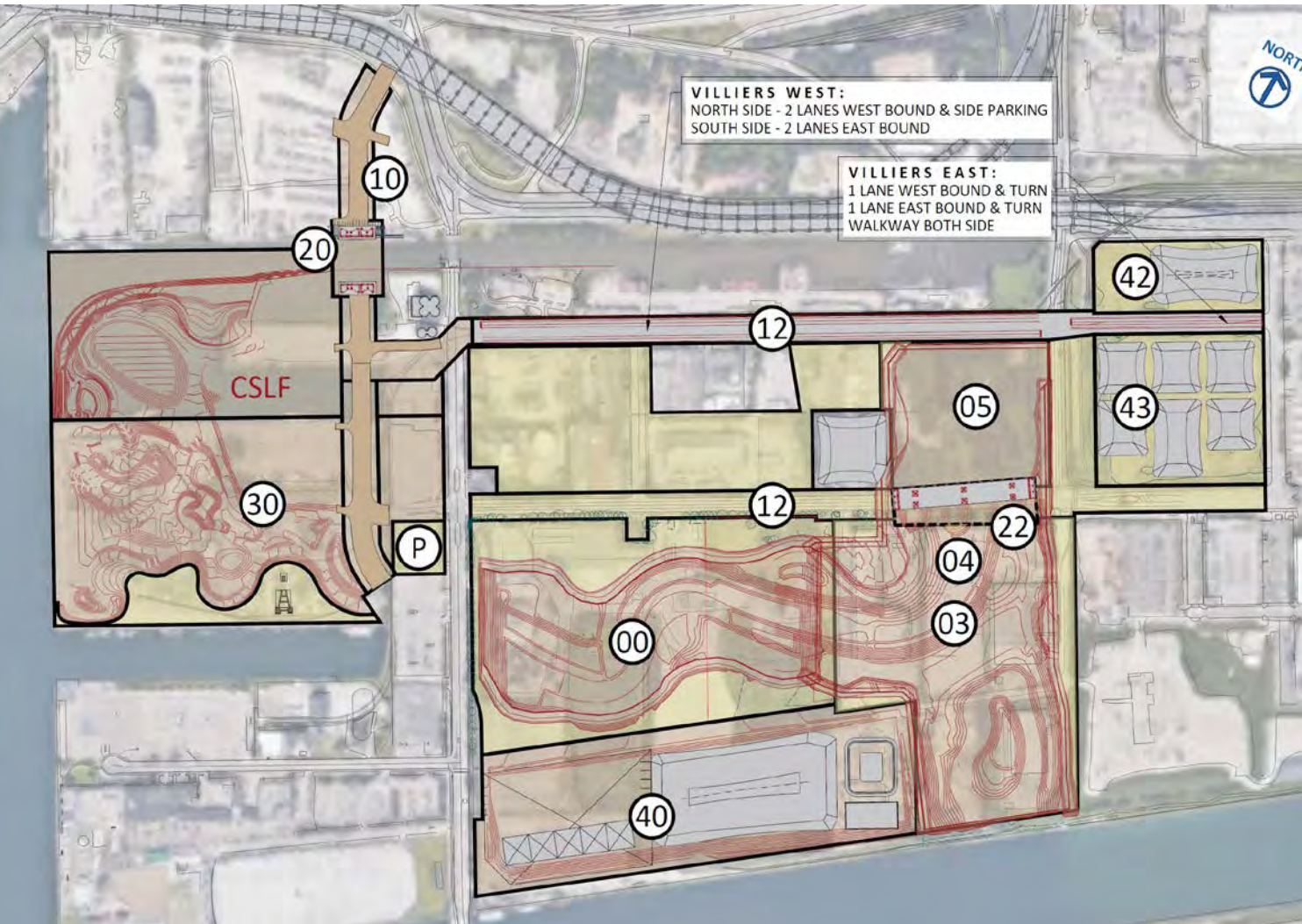
City of Toronto

2019
TORONTO URBAN DESIGN AWARDS



Upcoming Construction Work

Upcoming Construction: September to December 2019



AREA 00

- Cut-off wall – Caisson drilling
- Excavation

AREA 03, 04 & 05

- Site preparation, demolition
- Excavation
- Environmental controls

AREA 10

- Cherry Street realignment: demolition, site preparation
- Preloading

AREA 12

- Road demolition & site preparation

AREA 20

- New Cherry Street Bridge - Bridge sub-structure & Foundation

AREA 22

- Road demolition & site preparation
- Bridge sub-structure & Foundation

AREA 30

- Demolition: parking lots, buildings
- Site preparation
- Rough grading

AREA 40

- Stockpiling of soil and soil treatment facility

AREA 42 & 43

- Demolition, site preparation, tree cutting

MONITORING (SITE-WIDE):

- Air, dust, noise, odour, weather
- Turbidity
- Surface-water quality
- Vibration
- Soil and groundwater

Traffic Management Plan – Inner Port Lands Area

Final Street Configuration



Three Distinct Streets for the Port Lands

Cherry Street

An Urban Gateway to the Port Lands



A View Looking Southwest on East Side of New Cherry Street



- 1 Sidewalk (min. 30 m)
- 2 Social Spaces
- 3 Open pit planters with robust urban tolerant planting. The planter is one component of the green infrastructure
- 4 Dedicated Transit Lane

B View Looking East of New Cherry Street

Commissioners Street

The Park Edge



C View Looking West on North Side of Commissioners Street



- 1 Active and urban edge on the north side responding to future development
- 2 A dense green edge and relaxed character for the south side responds to the park's character and programming
- 3 Sidewalk (min. 30 m)
- 4 Bioswale
- 5 Mid-block crossing
- 6 Dedicated Transit Lane
- 7 Vehicular lay-by

D View Looking South of Commissioners Street

Don Roadway

The River Edge



E View Looking South on West Side of Don Roadway

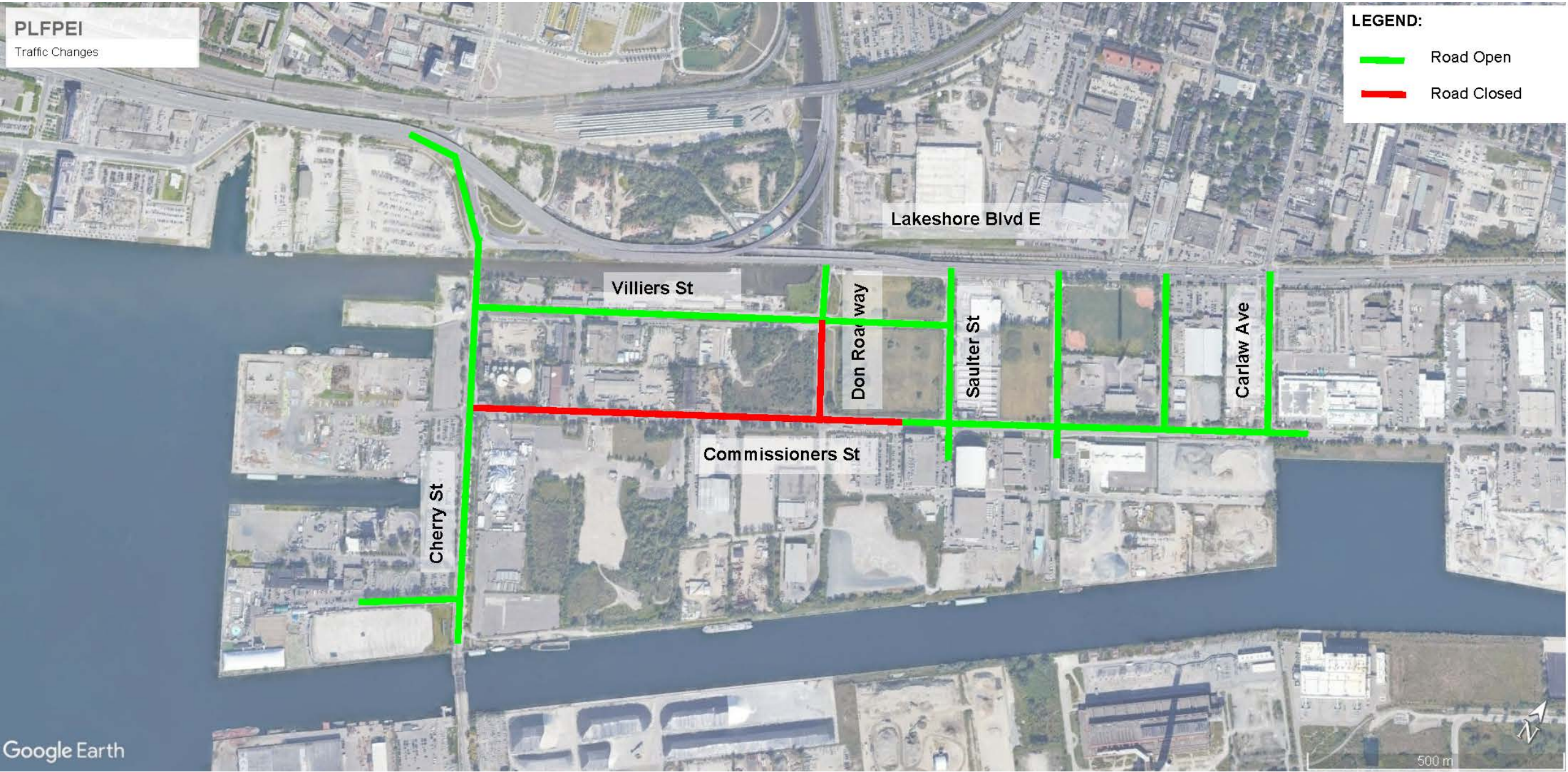


- 1 Lower Don River Trail (3.6 m)
- 2 Sidewalk (min. 2.3 m)
- 3 Planted Boulevard. Planting inspired by the river ecology.
- 4 Seating/Viewing Area
- 5 Temporary Landscape
- 6 Reclaimed and repurposed railway tracks
- 7 Hydroelectric Transmission Corridor
- 8 Future Connection to New East-West Street

F View Looking East of Don Roadway

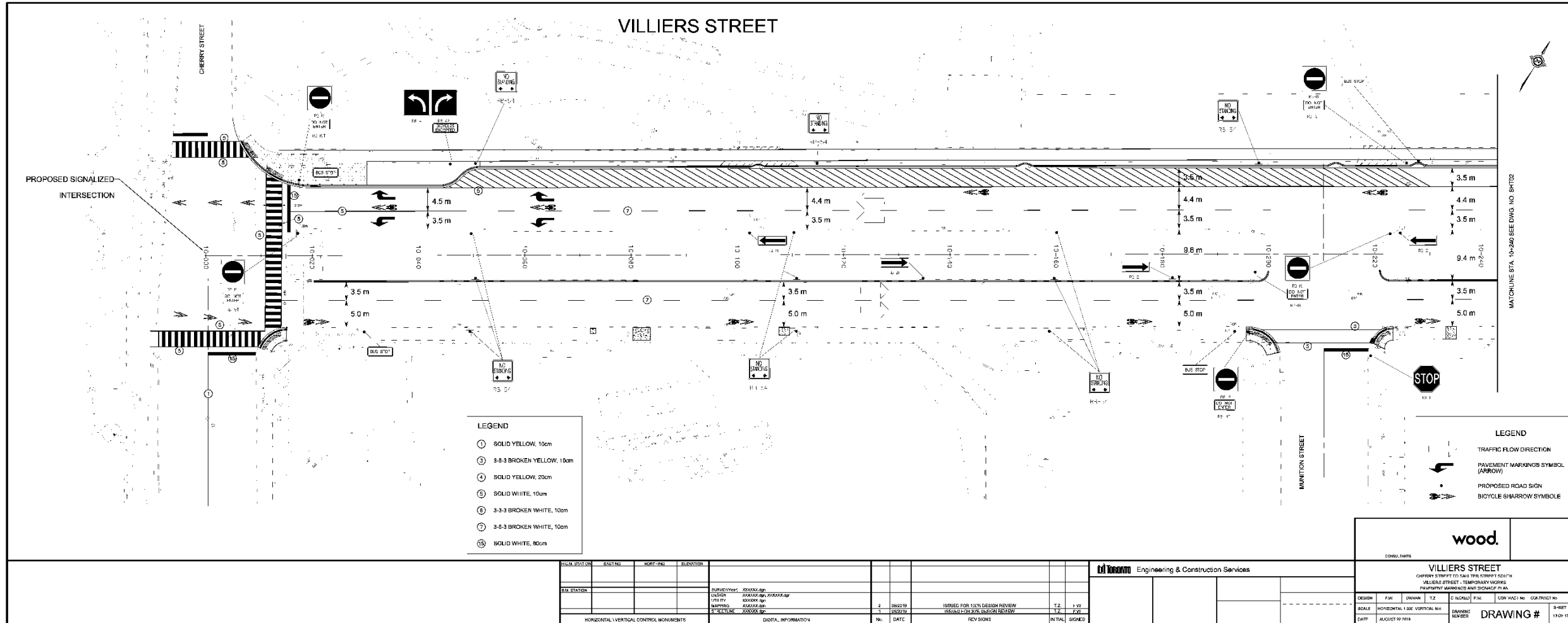
Traffic Plan

Commissioners Street Closure

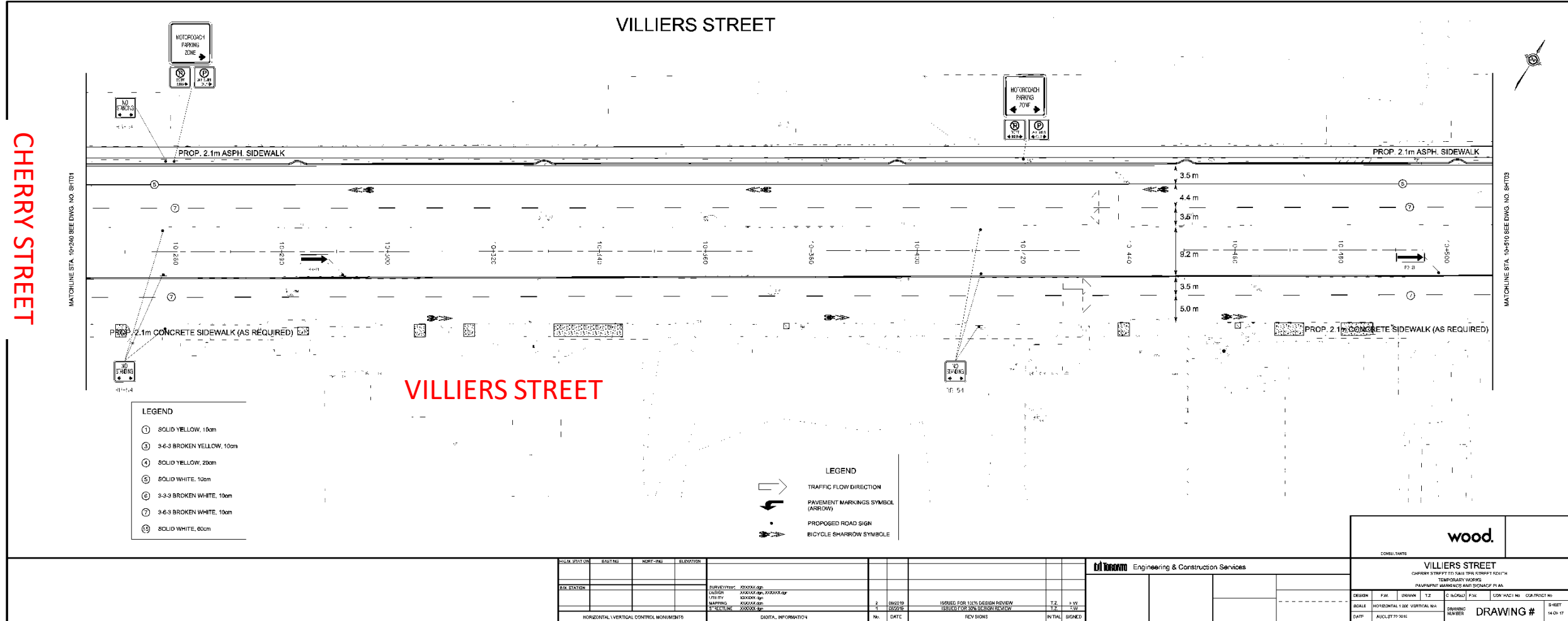


Villiers Street – Interim Condition

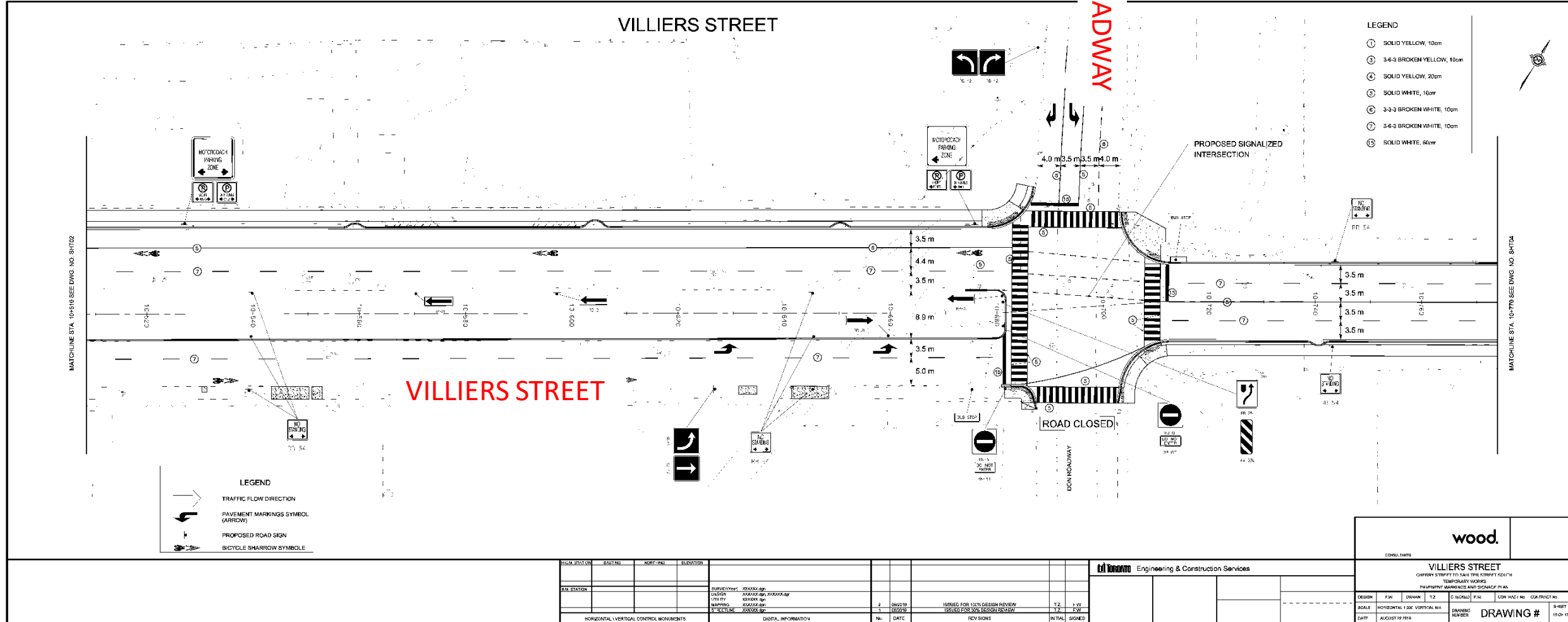
Villiers Street



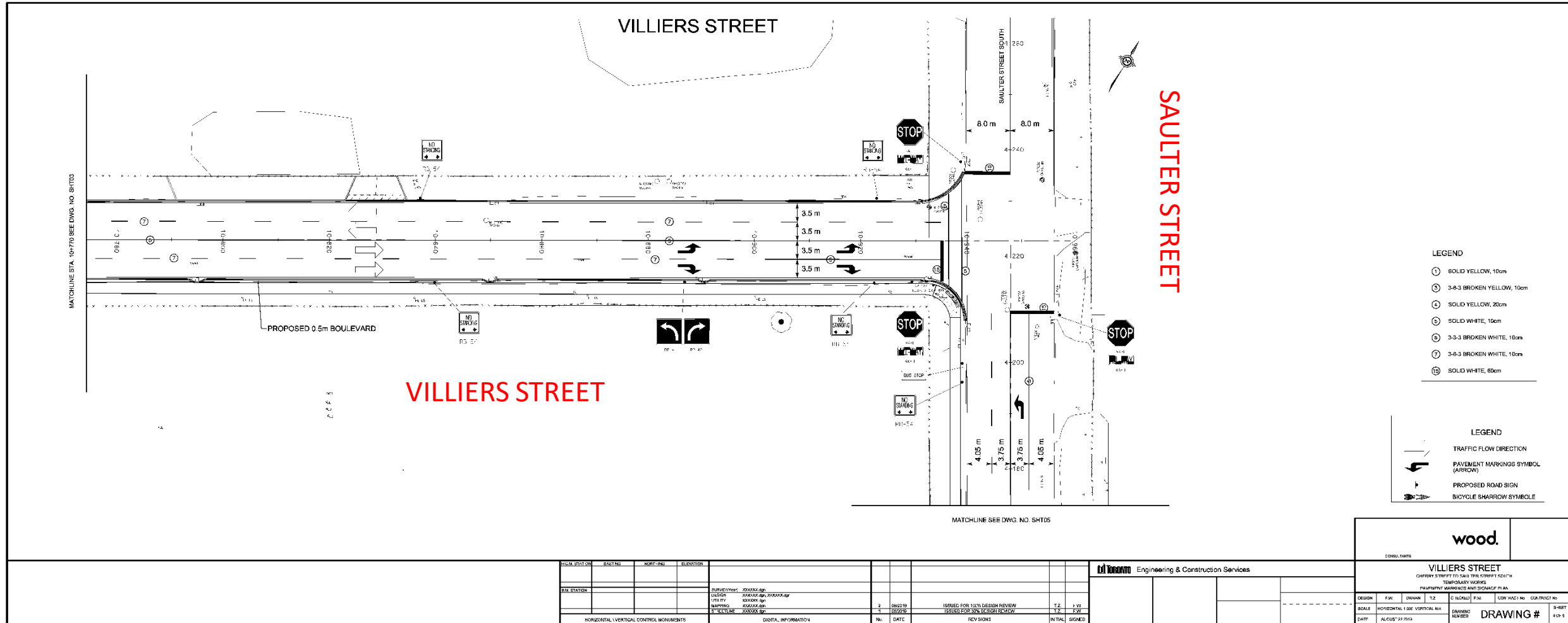
CHERRY STREET



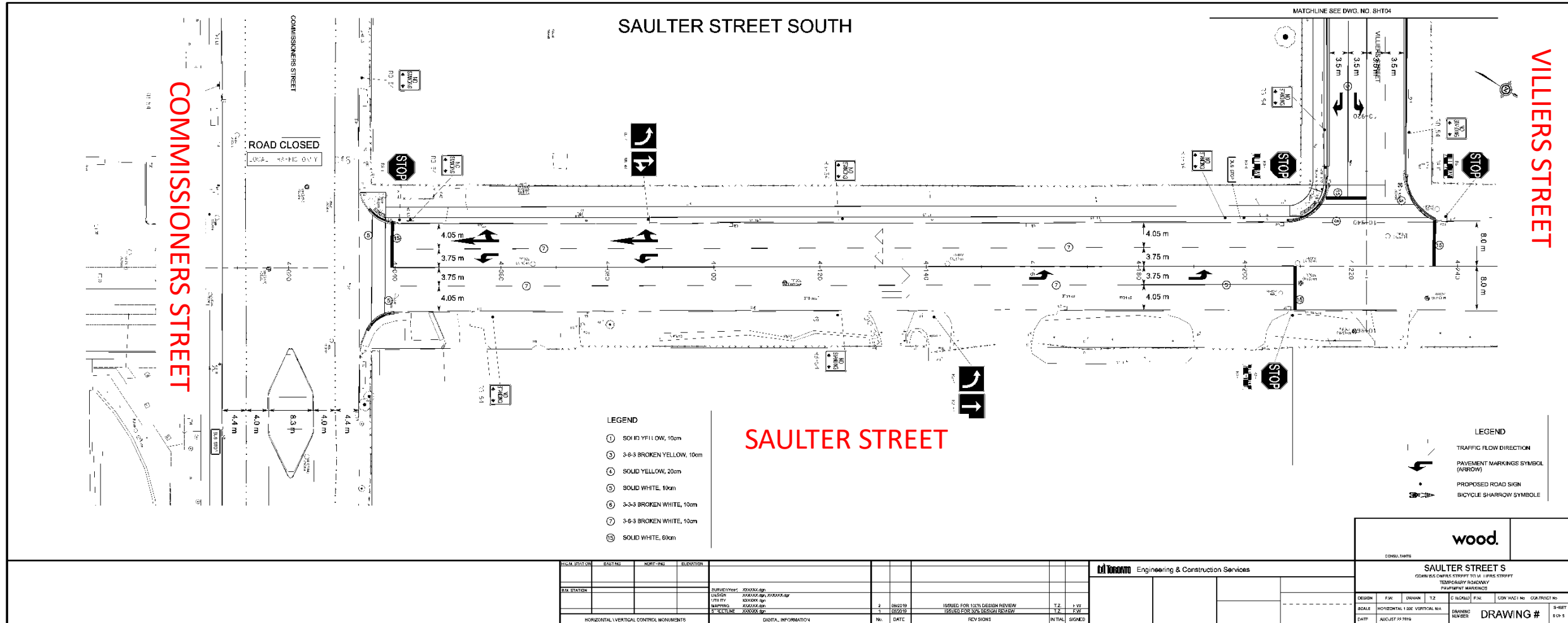
Traffic Plan: Q4 -2021



Villiers Street



Saulter Street South



Discussion and Feedback