

PORT
20
24

December 8, 2021

Port Lands Flood Protection
& Lake Shore Boulevard East
Projects

LANDS



The land upon which we are undertaking our revitalization efforts is part of the traditional territory of many nations including the Mississaugas of the Credit, the Anishnabeg, the Chippewa, the Haudenosaunee and the Wendat peoples, and is home to many First Nations, Inuit and Métis peoples today.

Toronto is covered by Treaty 13 with the Mississaugas of the Credit First Nation.

Restoring the Don River: A Once-In-A-Generation Project



King City

Gormley

Nobleton

Green River

Bolton

Richmond Hill

Vaughan

Markham

Pickering

Ajax

Brampton

SCARBOROUGH

NORTH YORK

Toronto

ETOBICOKE

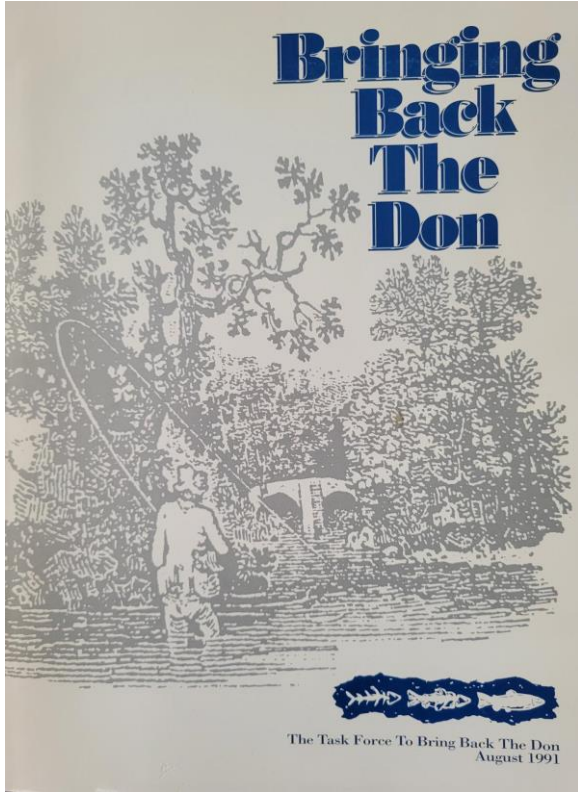
Mississauga

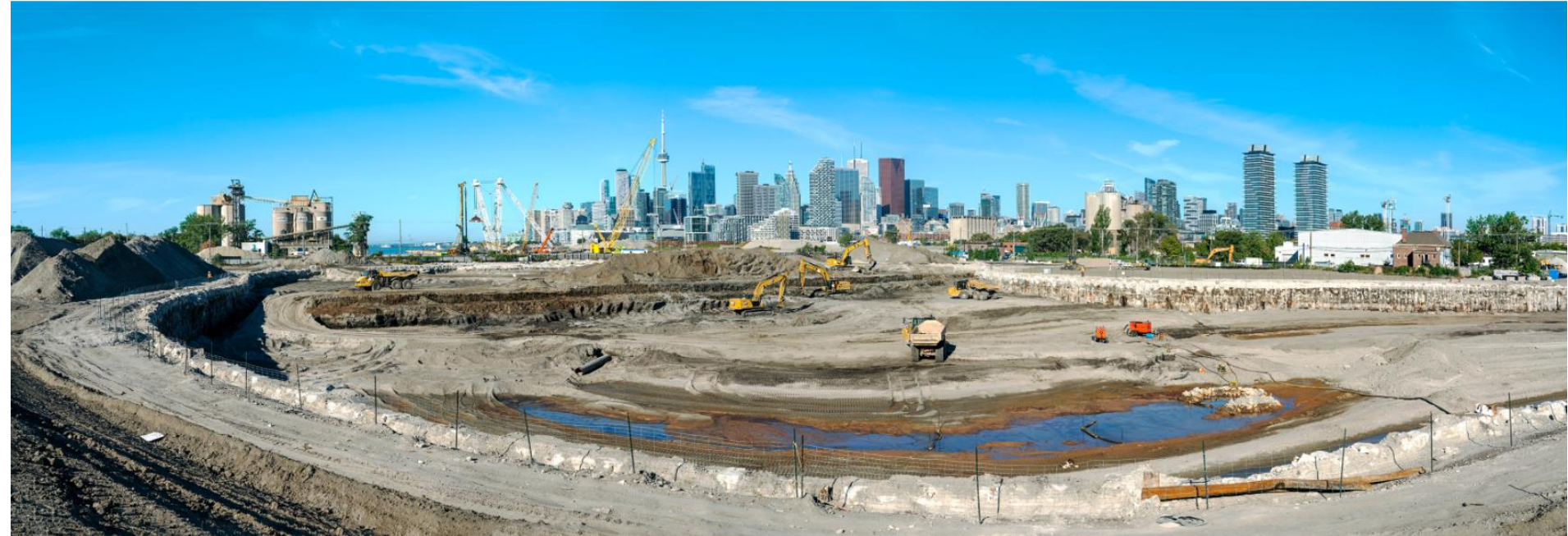
Google My Maps



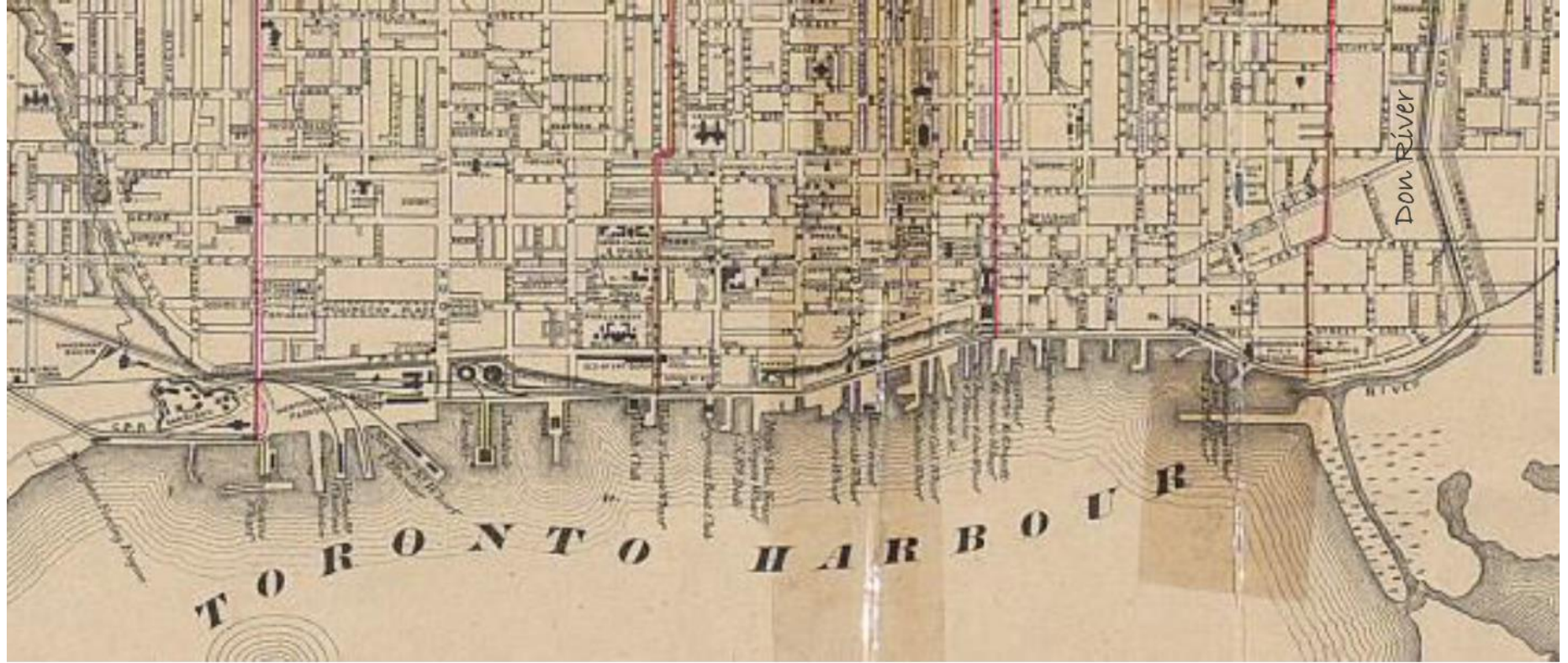
Humber River Valley

Don River Valley



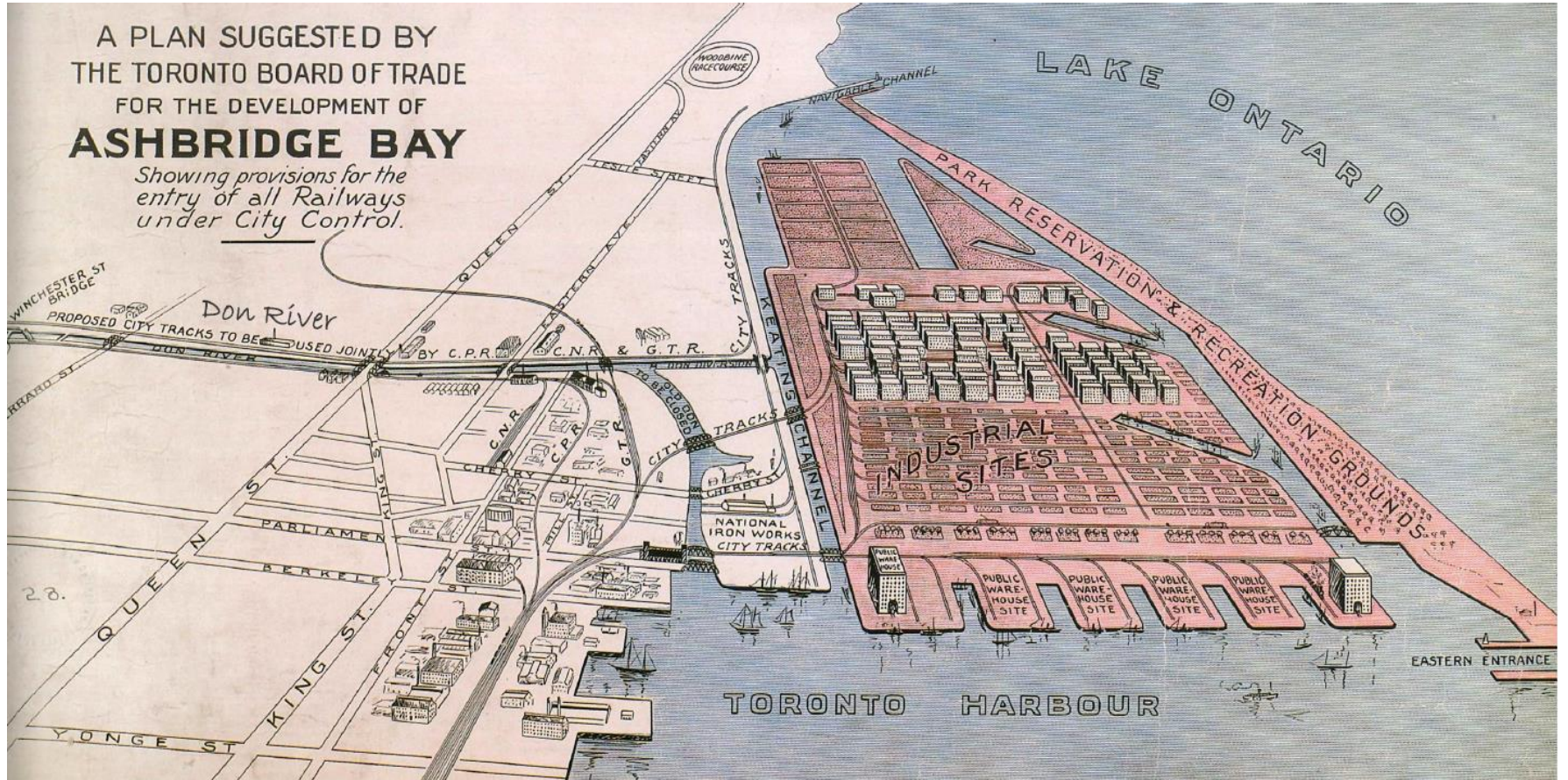




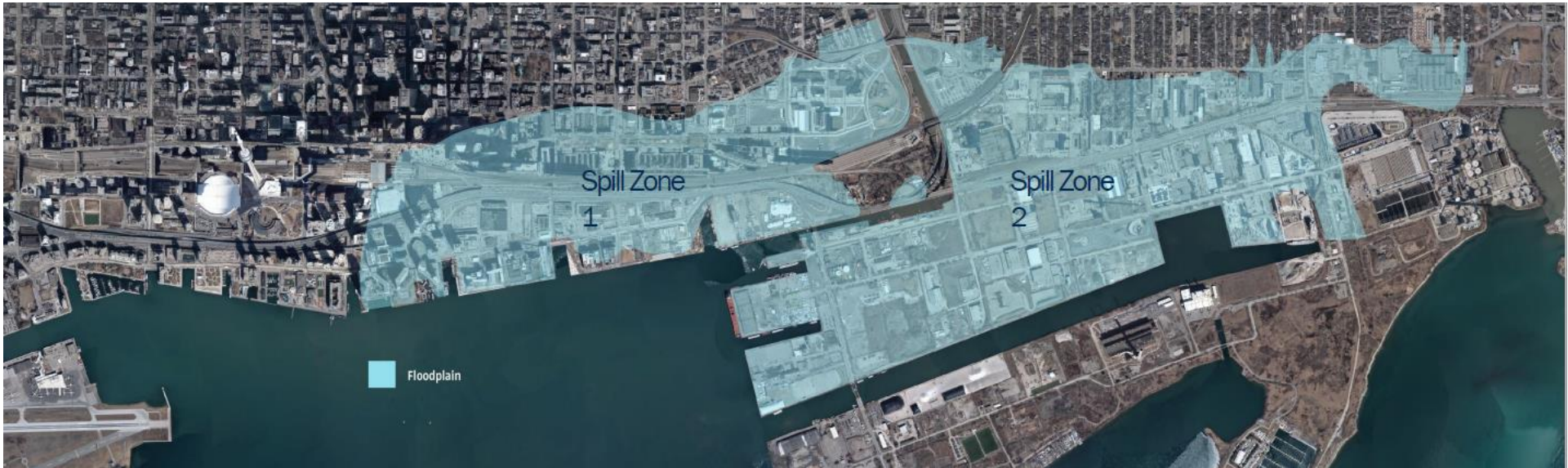


A PLAN SUGGESTED BY
THE TORONTO BOARD OF TRADE
FOR THE DEVELOPMENT OF
ASHBRIDGE BAY

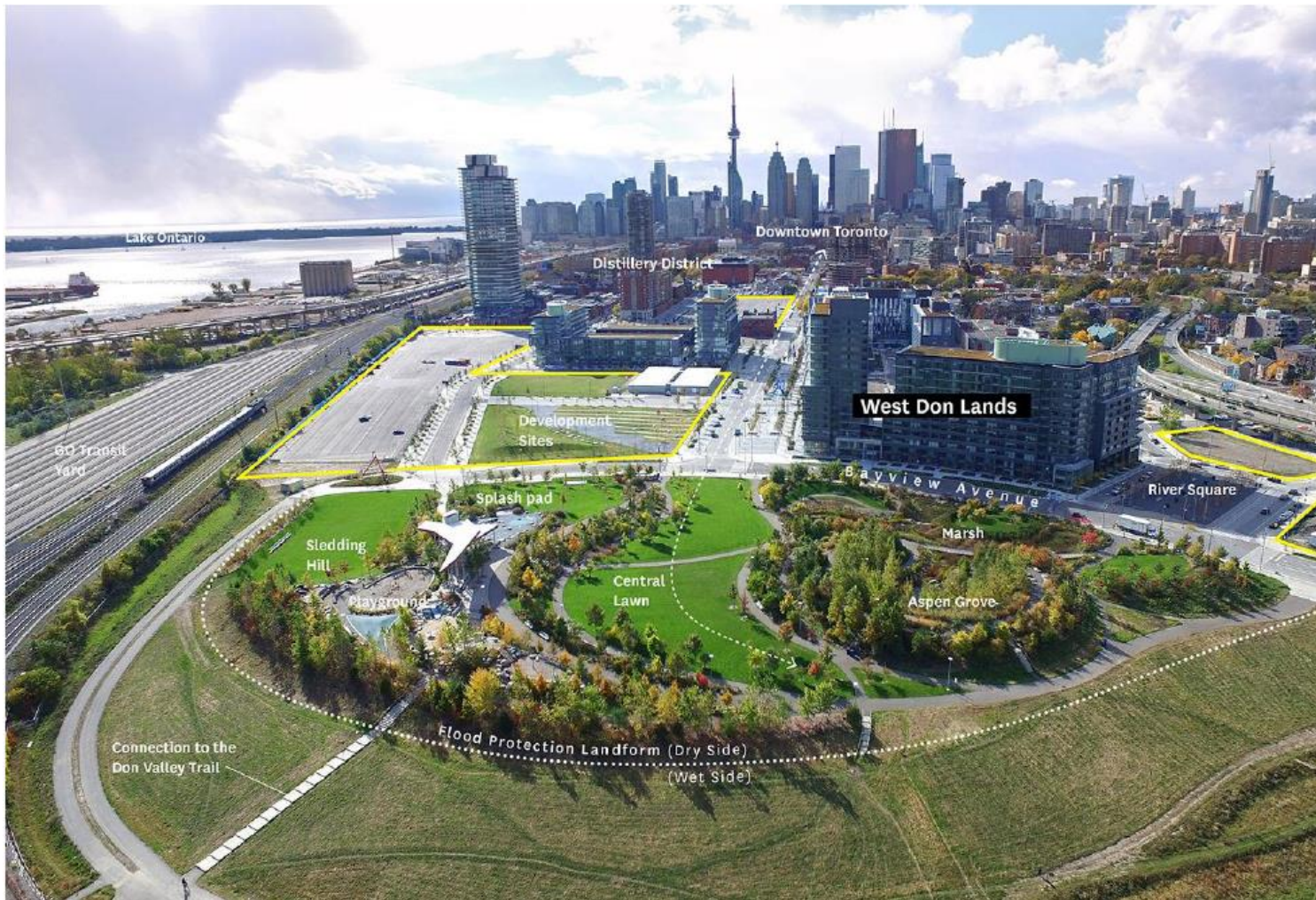
*Showing provisions for the
entry of all Railways
under City Control.*



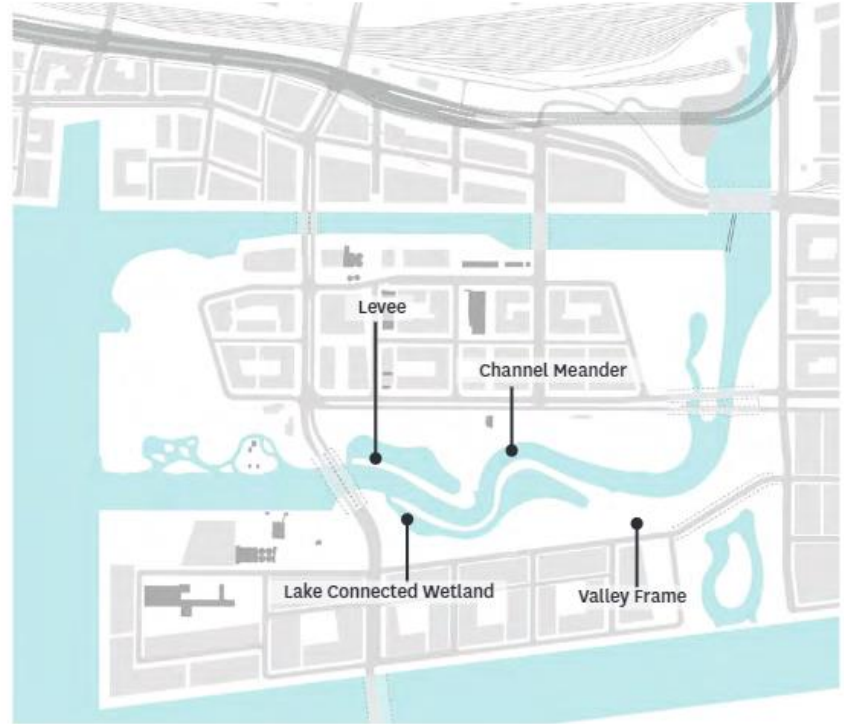














Baseflow







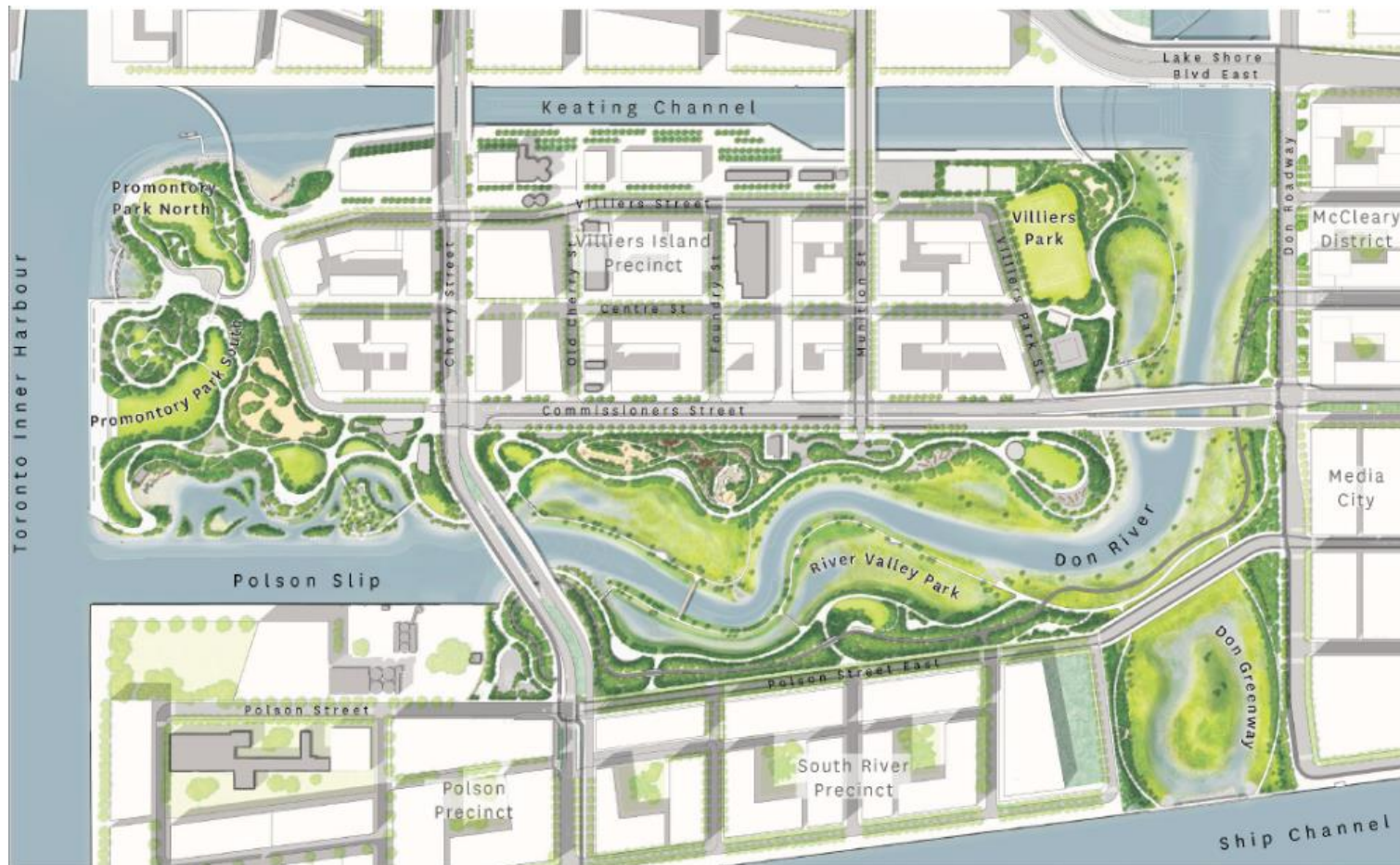
What we're building

- A Cherry Street Stormwater and Lakefilling
- B Polson Slip Naturalization
- C Flood Protection - River Valley
- D Don Greenway (Spillway & Wetland)
- E Don Roadway Valley Wall Feature
- F East Harbour Flood Protection Land Form
- G Sediment and Debris Management Area
- H Flow Control Weirs
- I Eastern Avenue Flood Protection
- J Villiers Island Grading
- K Keating Channel Modifications
- L Promontory Park South
- M River Park
- N Lake Shore Road and Rail Bridge Modifications
- O Cherry Street Bridge North
- P Cherry Street Bridge South
- Q Commissioners Street Bridge
- R Old Cherry Street Bridge Demolition
- S Site Wide Municipal Infrastructure
- T Don Roadway
- U Hydro One Integration
- V Commissioners Street
- W Cherry Street Re-alignment

- Port Lands Flood Protection and Enabling Infrastructure Boundary
- Earthworks/Flood Protection
- Parks
- Bridges & Structures
- Roads and Municipal Infrastructure



Villiers Island



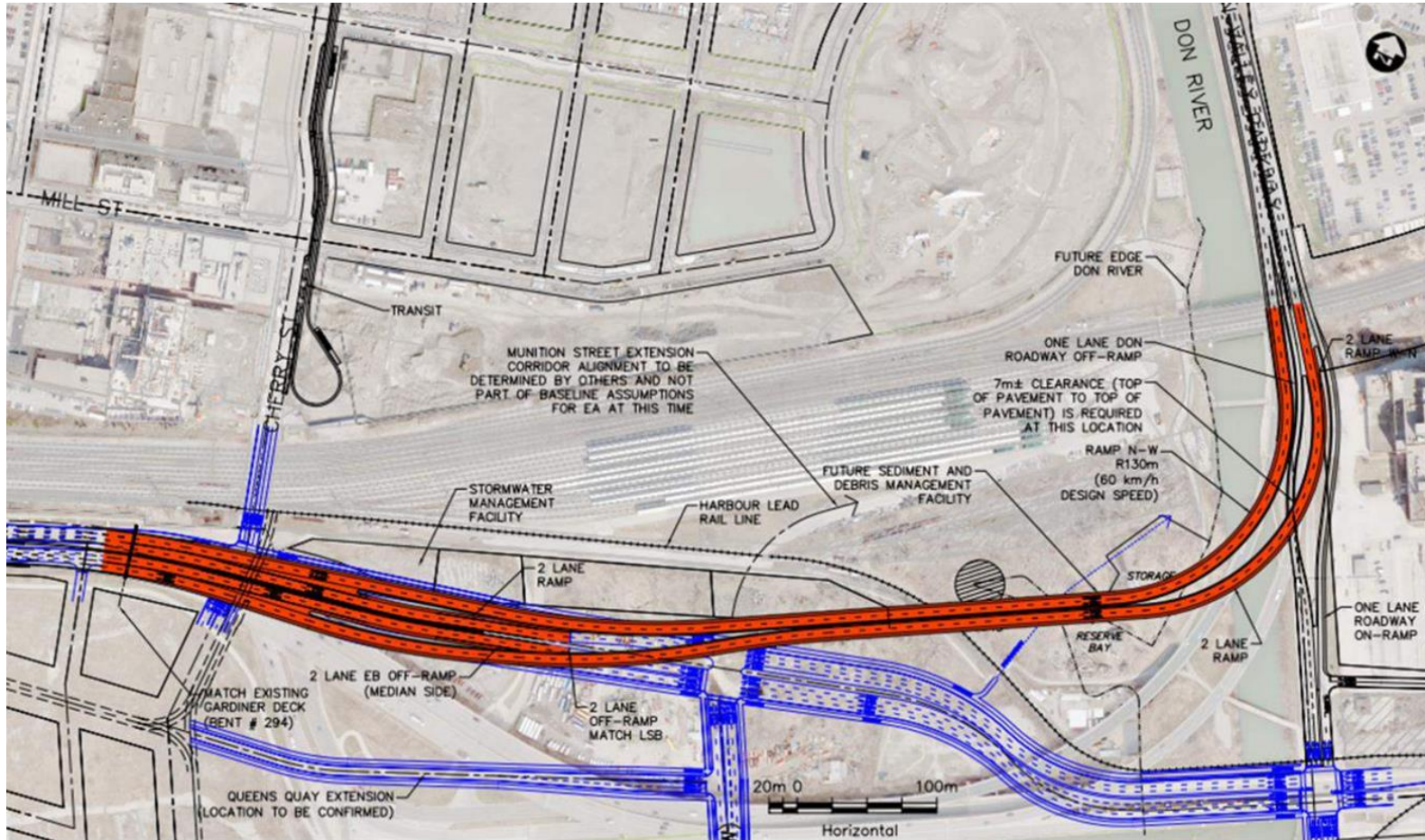


Lake Shore Boulevard East Project

Gardiner Expressway Reconfiguration – City of Toronto



Gardiner Expressway Reconfiguration - City of Toronto



What is Waterfront Toronto implementing?

The Lake Shore Boulevard East project combines **elements** of the City of Toronto's **Gardiner East** project with the **Port Lands Flood Protection** project.

The project has three main components:

1. Reconstruct Lake Shore Bridge over the Don River
2. Remove Gardiner Expressway on/off ramps to Lake Shore Boulevard/Logan Avenue
3. Rebuild Lake Shore Boulevard and improve greenspace and trails between Don Roadway and Carlaw Avenue



Why combine these projects?



- Cost efficiencies
- Reduced traffic disruption: A one-time 3-year disruption versus two separate construction periods lasting 6 years.
- **Health and Safety:** Removing the Gardiner ramps makes construction on Lake Shore safer for construction crews and road users
- **New green space and bike lanes four years early:** Instead of leaving an interim condition on Lake Shore Boulevard East, in 2024 the final design will be complete from the new bridge east to Carlaw Avenue, including separated bike lanes and linear park

Why do we need to modify the Lake Shore Bridge?

The Don River needs to be widened north of Lake Shore Boulevard to accommodate the Sediment and Debris Management area and to allow for more river flow to prevent flooding. This results in a longer bridge. To make space for bike lanes and pedestrians crossing the river, the bridge also needs to be widened.



What will we do to modify the Lake Shore Bridge?

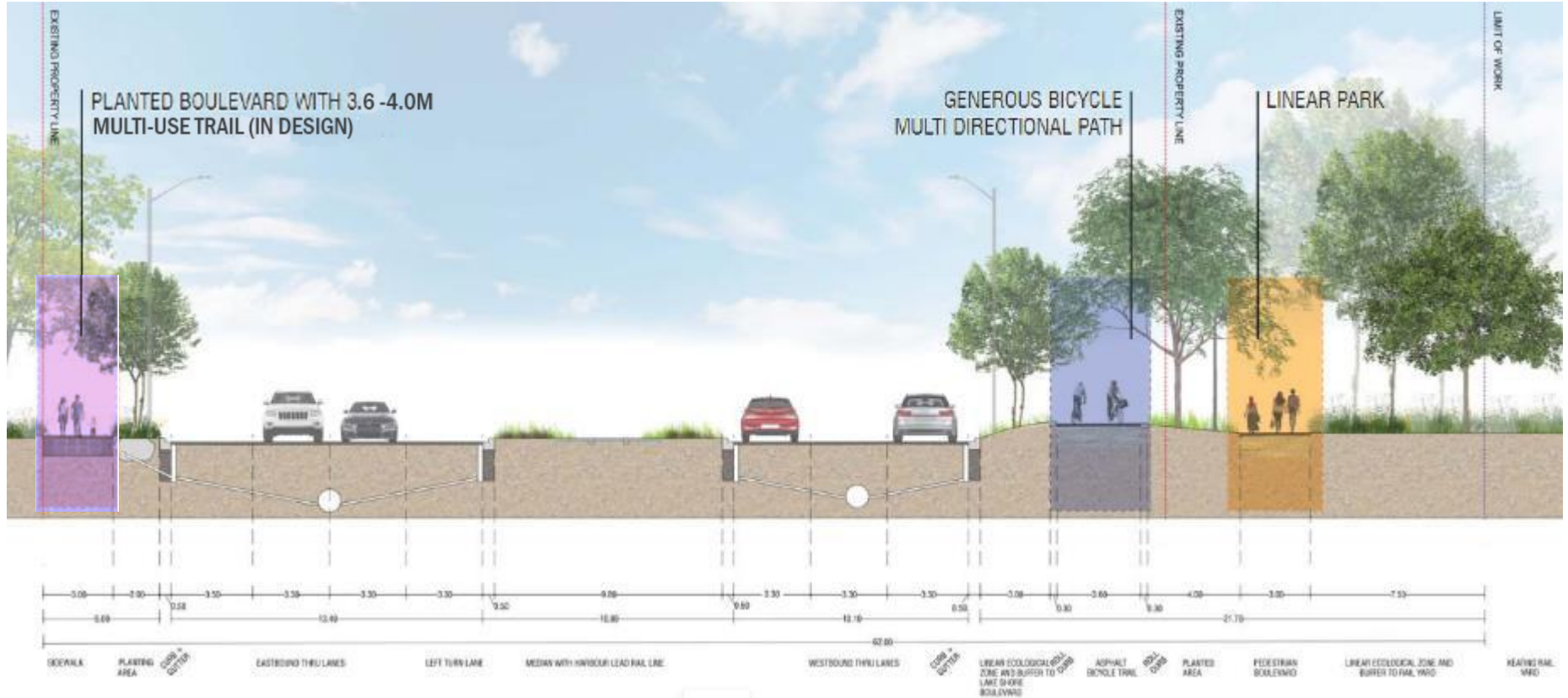
The modifications required to allow for the crossing of the Don River include:

- Removing the existing Lake Shore Bridge structure as it is at the end of its useful life.
- Rehabilitating the existing bridge piers and abutments.
- Rebuilding the existing bridge structure to accommodate pedestrians and cyclists.
- Double the length of the bridge by constructing an additional two spans.



New configuration for Lake Shore Boulevard East

Rebuilding Lake Shore Boulevard East from the Lake Shore Bridge to Carlaw Avenue

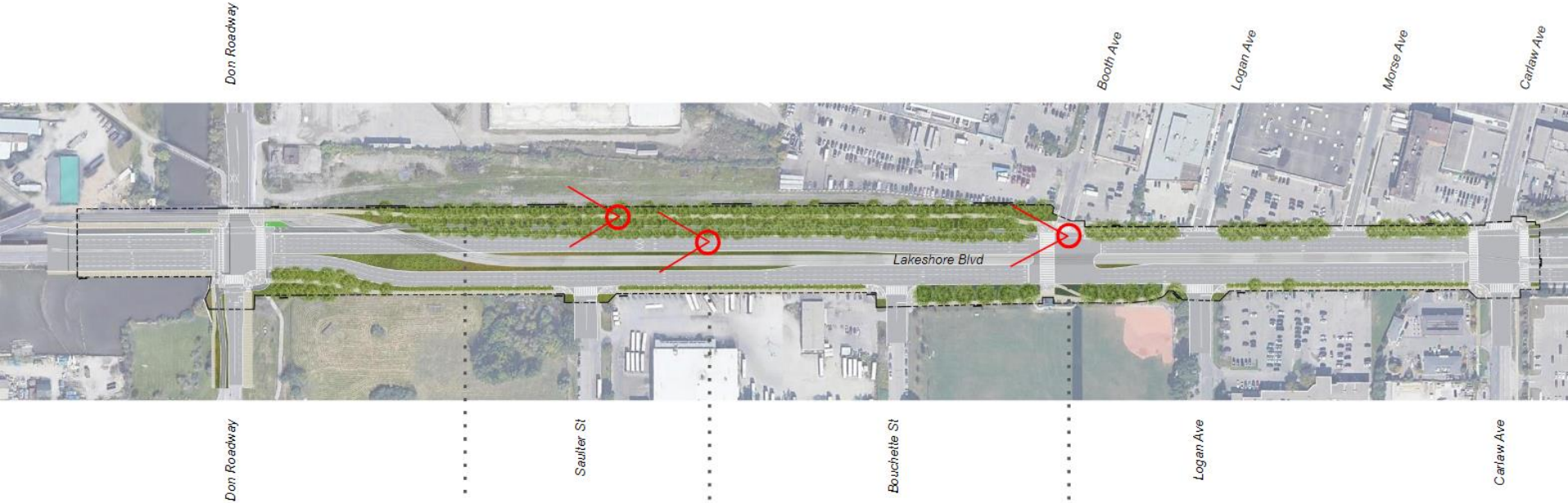


Representative cross-section: looking west

Lake Shore Boulevard before ramp removal



The future boulevard



Construction Progress



[Watch on YouTube](#)

Upcoming Construction: What to Expect

Current Schedule

ACTIVITY	ANTICIPATED START	ANTICIPATED END
Gardiner / Logan Ramps Closure	September 1, 2021	N/A
Gardiner / Logan Ramps Removal	September 2021	Complete
Lake Shore Bridge Works (over Don River)	January 2022	March 2024
Lakeshore Blvd. Reconfiguration from Lake Shore Bridge to Carlaw Ave.	January 2022	December 2024



Gardiner/Logan ramps from Lake Shore Bridge (west of Don Roadway) to Logan

What to Expect on Don Roadway

To construct permanent flood protection along Don Roadway and rebuild the road, Don Roadway is closed south of Lake Shore Boulevard as of December 2021.

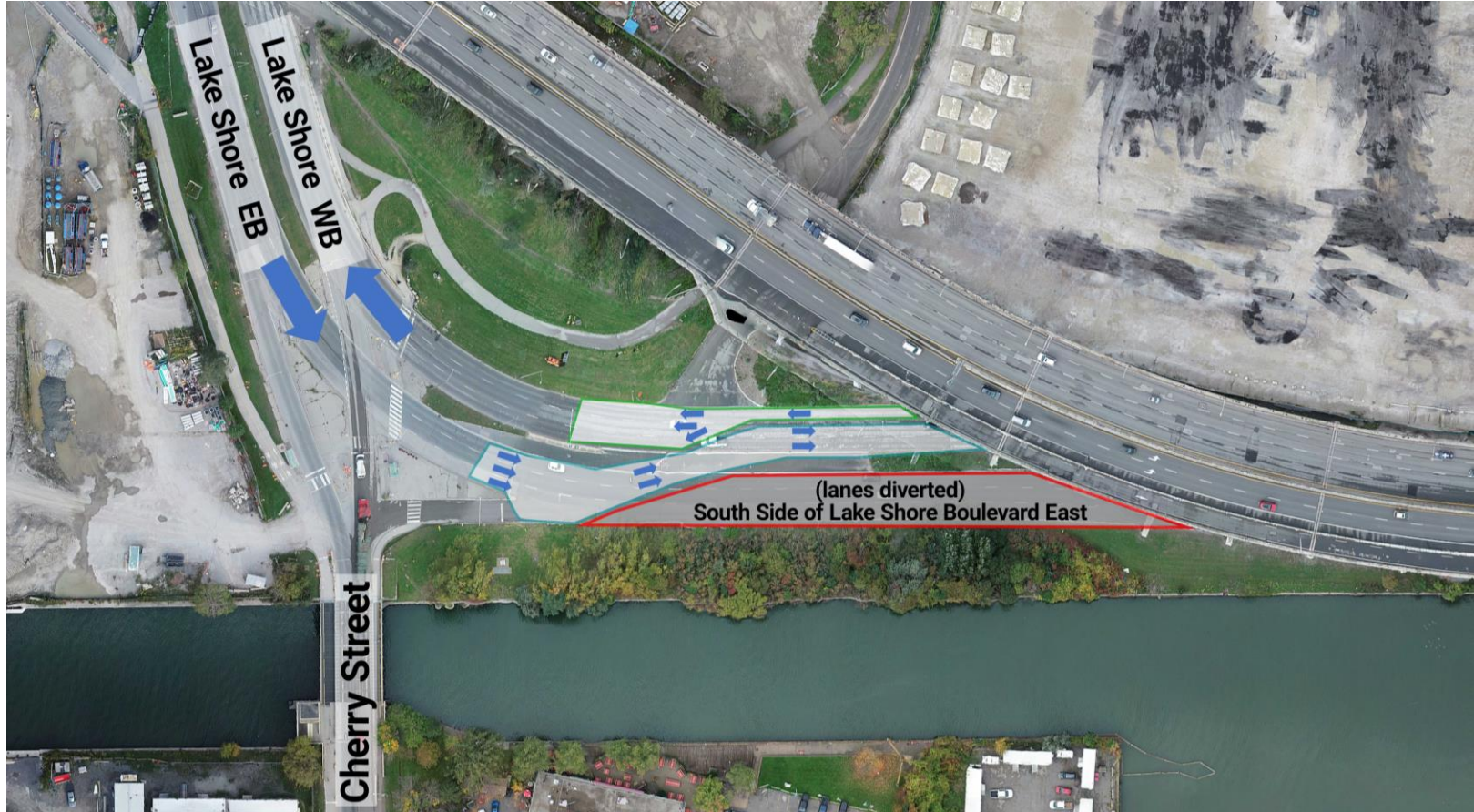
- Traffic coming southbound off the Don Valley Parkway will not be able to continue straight into the Port Lands, and there is no left-turn on to Cherry Street from Lake Shore Boulevard westbound.
- Access to the Don Valley Parkway from the Port Lands will be via Lake Shore Boulevard East.

What to Expect on Lake Shore Boulevard East

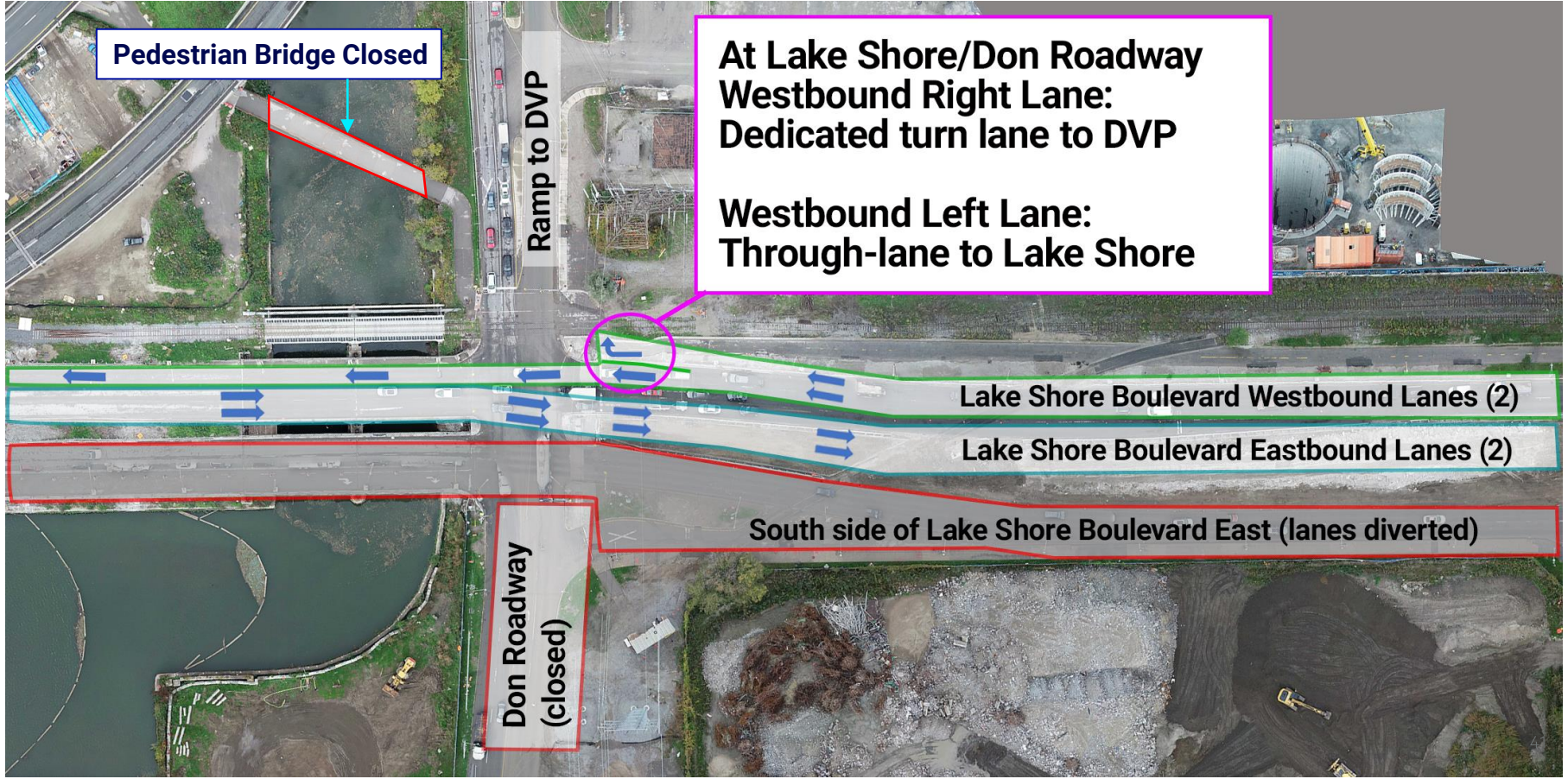
January 2022 to 2024:

- Lane restrictions will be in place on Lake Shore Boulevard between Carlaw Avenue and Cherry Street
- Lanes will be marked using traffic barrels and signage
- Traffic control will be done with Paid Duty Officers at intersections while work is occurring
- Flag persons will be present to control construction vehicle movement when crossing public spaces such as sidewalks, roads, and bike paths

Lane Diversions east of Cherry Street Starting January 2022



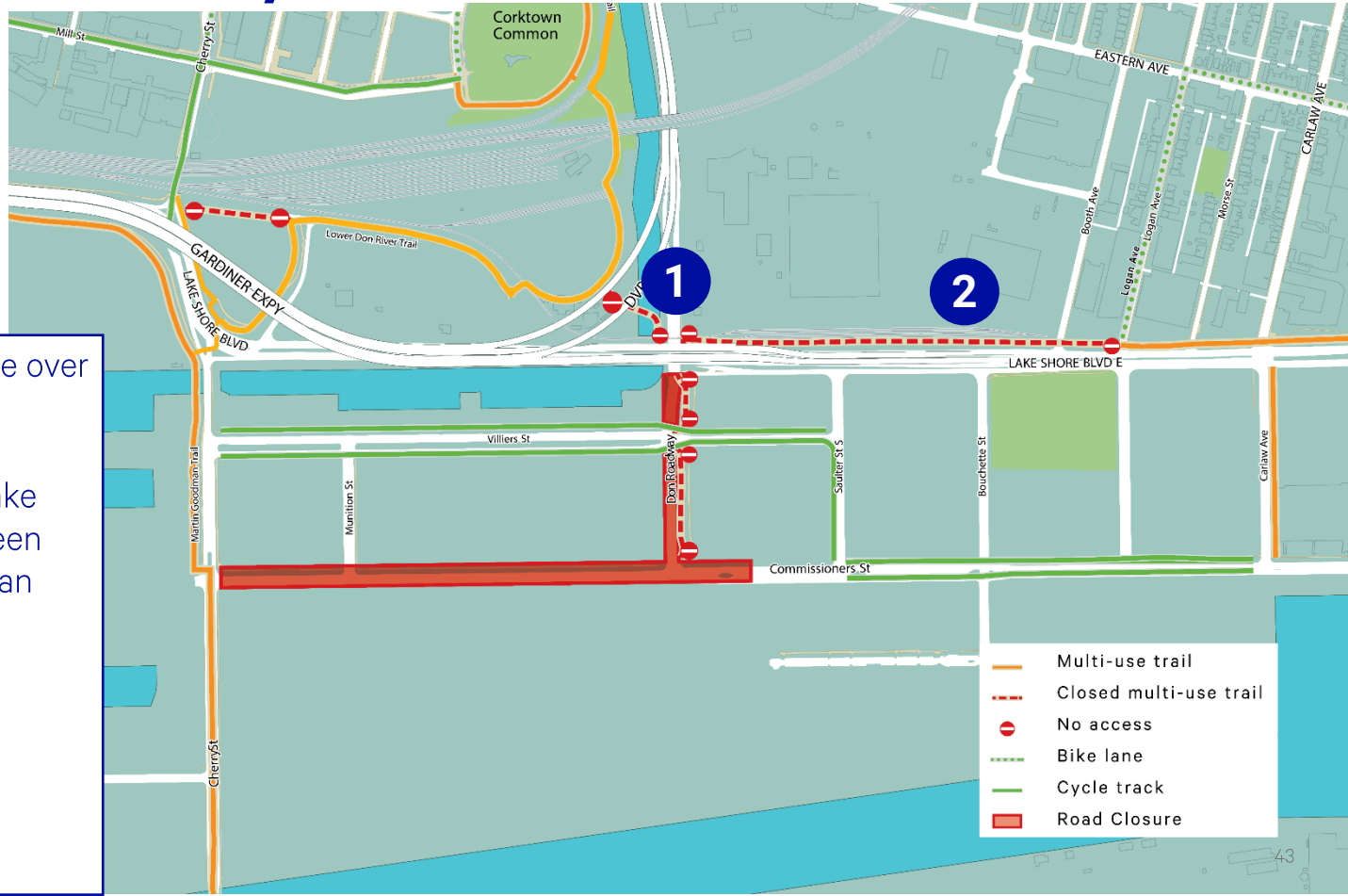
Lane Diversions at Lake Shore and Don Roadway Starting January 2022



Closures and Detours: Cycling and Pedestrian Facilities

Cycling and Pedestrian Detours

December 13, 2021 – January 2022



1

Cycle/pedestrian bridge over the Don River Closed

2

Multi-use trail along Lake Shore Boulevard between Don Roadway and Logan Avenue closed

Cycling and Pedestrian Detours

January 2022 – March 2022

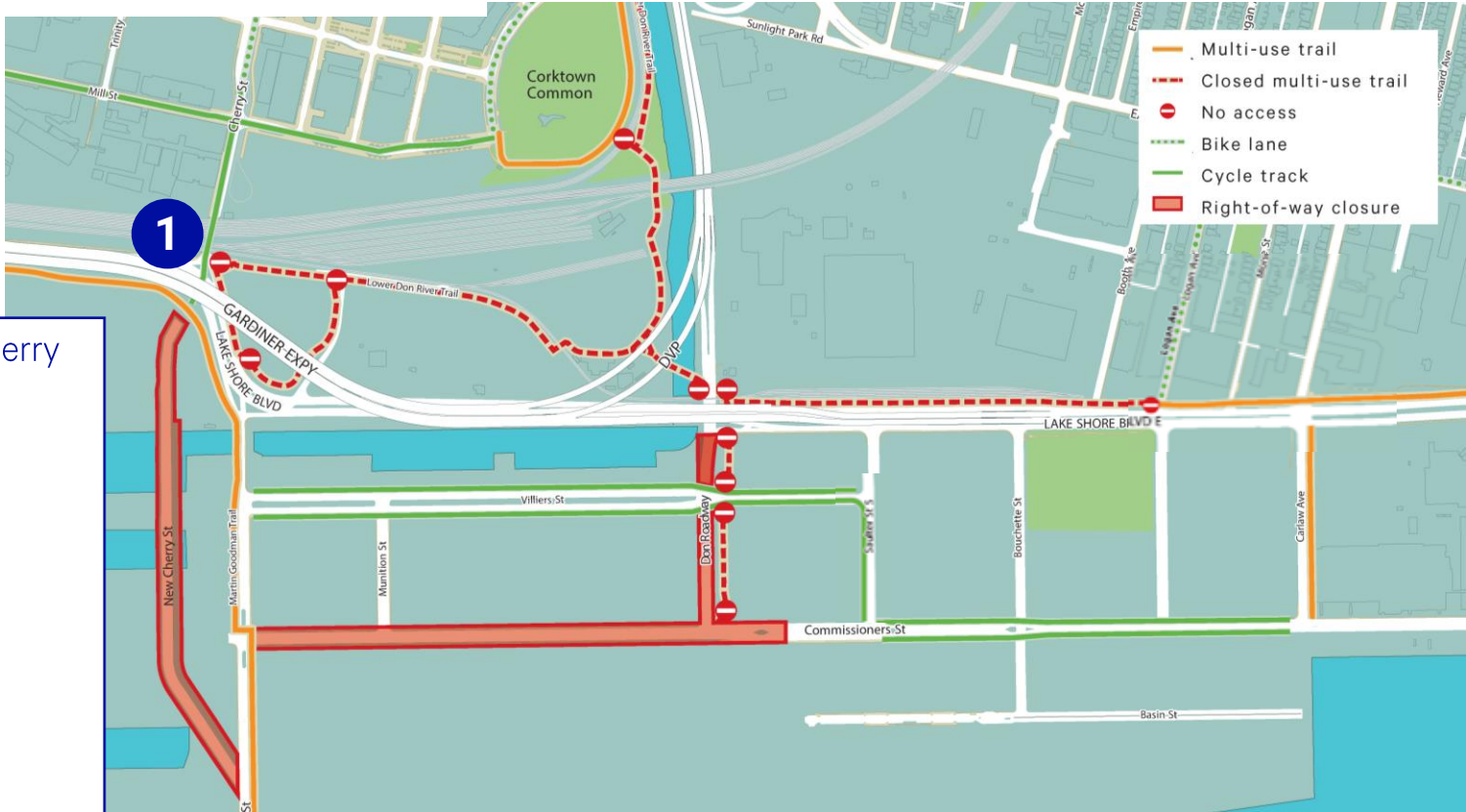


1

Lower Don Trail closed south of Corktown Common to Cherry Street

Cycling and Pedestrian Detours

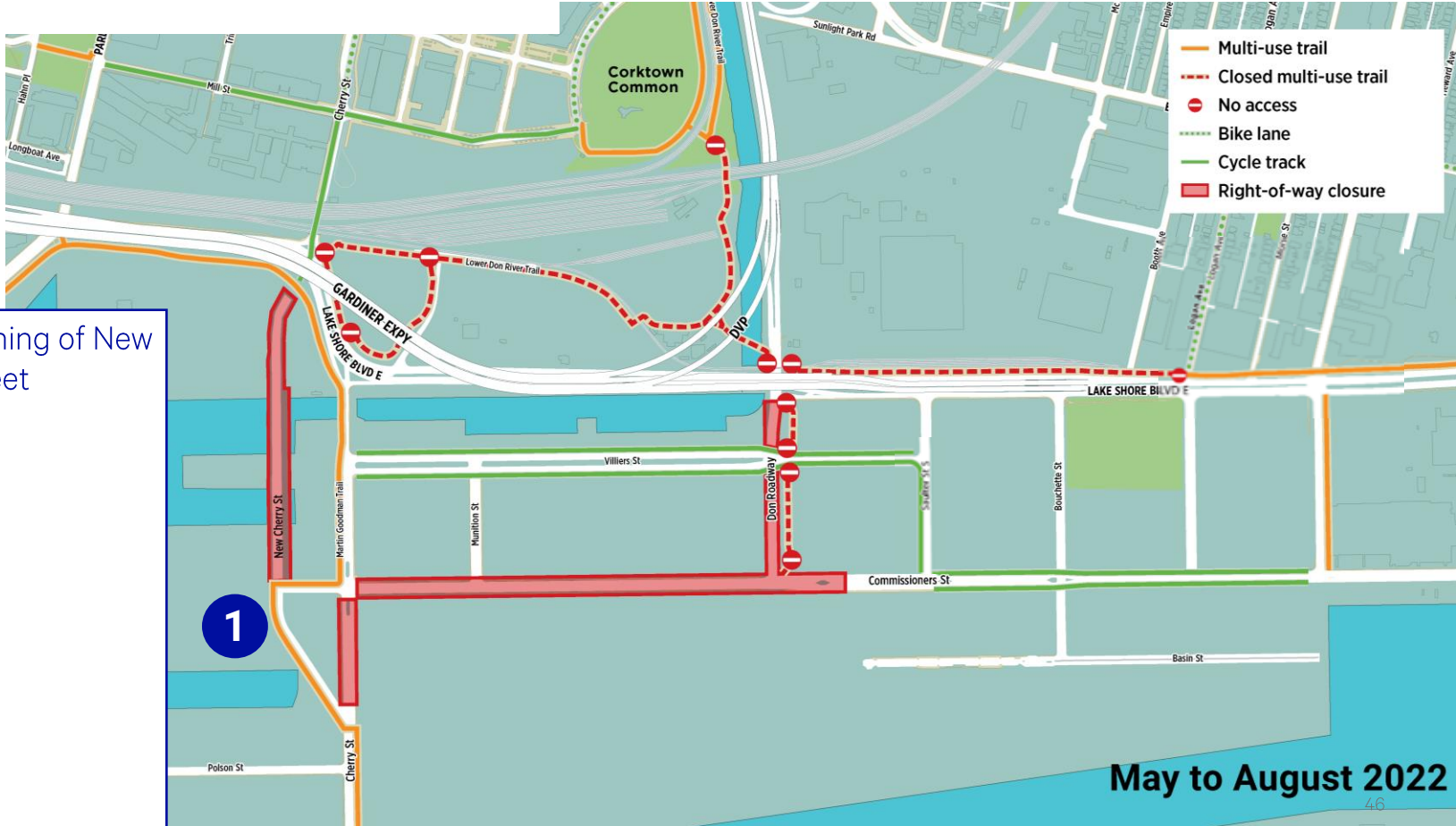
March - May 2022



1 New Crossing of Cherry Street

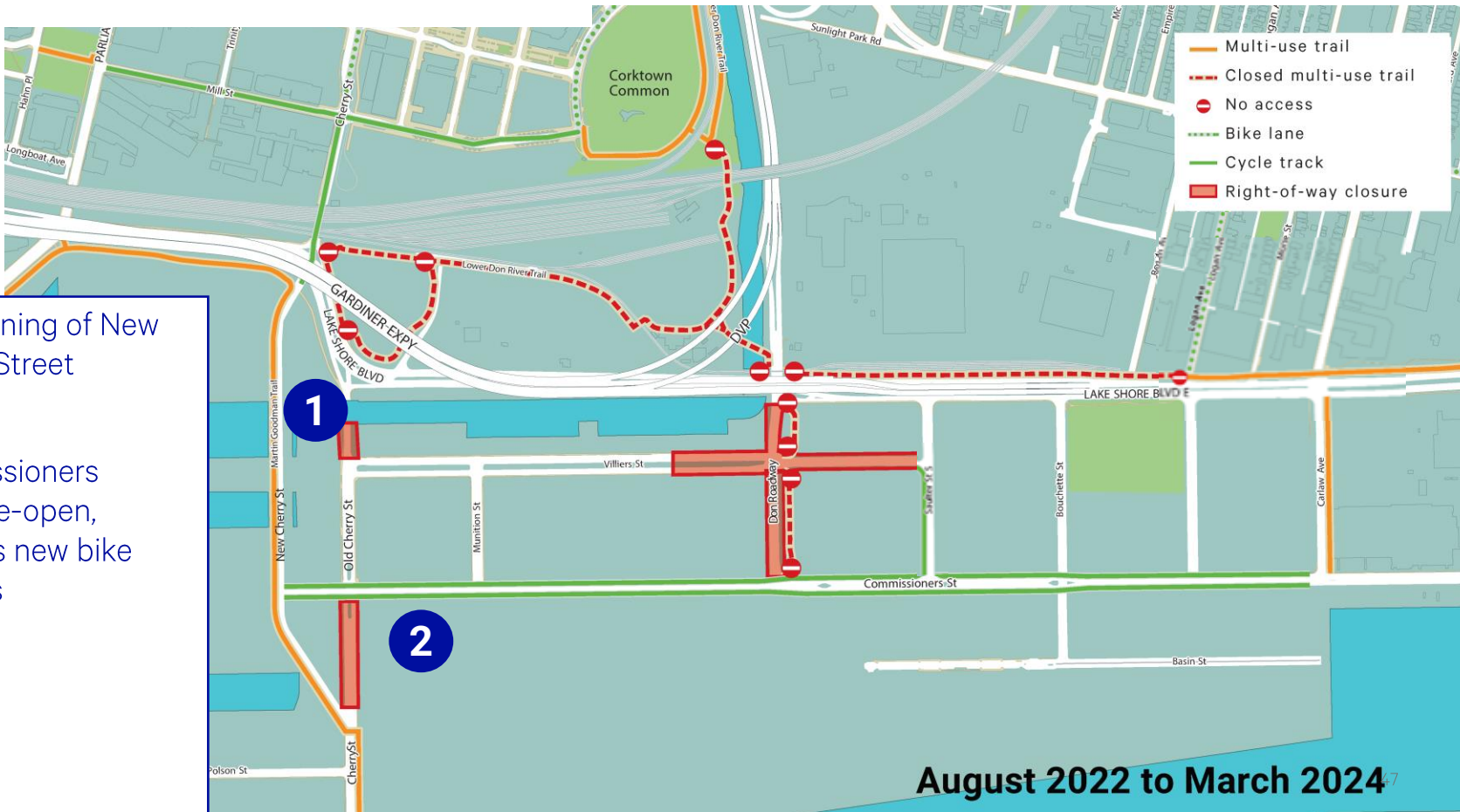
Cycling and Pedestrian Detours

May - August 2022



Cycling and Pedestrian Detours

August 2022 – March 2024



- Multi-use trail
- Closed multi-use trail
- No access
- Bike lane
- Cycle track
- Right-of-way closure

- 1 Full opening of New Cherry Street
- 2 Commissioners Street re-open, includes new bike facilities

August 2022 to March 2024

Stay in Touch

How We'll Communicate Upcoming Closures, Detours

Before construction:

- We developed our Traffic Management Plan with input from our Construction Liaison Committee made up of businesses and residents. As part of this process, we also consulted with people who use the roads and cycling facilities that will be affected by construction.

During construction:

- Clear road detour signs
- Information signs with details about how to find construction details or contact us
- Traffic notices (mailed, digital)
- Project website: PortLandsTO.ca/construction

Sign up for digital notices at PortLandsTO.ca/construction/#Subscribe



The Traffic Management Plan is a live document that is being evaluated and revised as the project progresses.

What we can adjust:

- Traffic signal timings
- Traffic signal coordination
- Some turning restriction

What we have updated:

- Details for the bike detour
- Updated signal timing plans
- Lessons learned



What's Next for Port Lands Flood Protection

Cherry Street South Bridge



River Mouth Excavation



River Valley: Preparing for Plantings



River Valley: Riverbank Reinforcements



Historical Plant Species

