



At Waterfront Toronto, we work with our partners at the City of Toronto, Province of Ontario and Government of Canada.



Chris Glaisek

SVP Planning & Design, Waterfront Toronto

Julius Gombos

VP Project Delivery, Waterfront Toronto



Don River

Corktown
Common

CN Tower

Union Station

Billy Bishop
Airport

Inner Harbour

Centre Island

Lafarge

RCYC

Cherry
Beach

Pinewood
Studios

The Hearn

Tommy
Thompson Park

Keating Channel

Ship Channel

Port Lands Flood Protection
Project Boundary





Don River

Keating Channel

Ship Channel



TORONTO
HARBOR
COMMISSIONERS

1000 FACTORY SITES

3 TRANSCONTINENTAL RAILWAYS
FREE SIDINGS - PUBLIC DOCKS
NIAGARA POWER AT COST

E. L. RUDDY, JR.



51 C4971/71 71064 A L2

The Port Lands Flood Protection Project



Don River

Keating Channel

Ship Channel

Port Lands Flood Protection
Project Boundary

What are we building?

- A** Cherry Street Stormwater and Lakefilling
- B** Polson Slip Naturalization
- C** Flood Protection - River Valley
- D** Don Greenway (Spillway & Wetland)
- E** Don Roadway Valley Wall Feature
- F** East Harbour Flood Protection Land Form
- G** Sediment and Debris Management Area
- H** Flow Control Weirs
- I** Eastern Avenue Flood Protection
- J** Villiers Island Grading
- K** Keating Channel Modifications
- L** Promontory Park South
- M** River Park
- N** Lake Shore Road and Rail Bridge Modifications
- O** Cherry Street Bridge North
- P** Cherry Street Bridge South
- Q** Commissioners Street Bridge
- R** Old Cherry Street Bridge Demolition
- S** Site Wide Municipal Infrastructure
- T** Don Roadway
- U** Hydro One Integration
- V** Commissioners Street
- W** Cherry Street Re-alignment

-  Port Lands Flood Protection and Enabling Infrastructure Boundary
-  Earthworks/Flood Protection
-  Parks
-  Bridges & Structures
-  Roads and Municipal Infrastructure



Earthworks/Flood Protection

- A** Cherry Street Stormwater and Lakefilling
- B** Polson Slip Naturalization
- C** Flood Protection - River Valley
- D** Don Greenway (Spillway & Wetland)
- E** Don Roadway Valley Wall Feature
- F** East Harbour Flood Protection Land Form
- G** Sediment and Debris Management Area
- H** Flow Control Weirs
- I** Eastern Avenue Flood Protection
- J** Villiers Island Grading
- K** Keating Channel Modifications
- L** Promontory Park South
- M** River Park
- N** Lake Shore Road and Rail Bridge Modifications
- O** Cherry Street Bridge North
- P** Cherry Street Bridge South
- Q** Commissioners Street Bridge
- R** Old Cherry Street Bridge Demolition
- S** Site Wide Municipal Infrastructure
- T** Don Roadway
- U** Hydro One Integration
- V** Commissioners Street
- W** Cherry Street Re-alignment

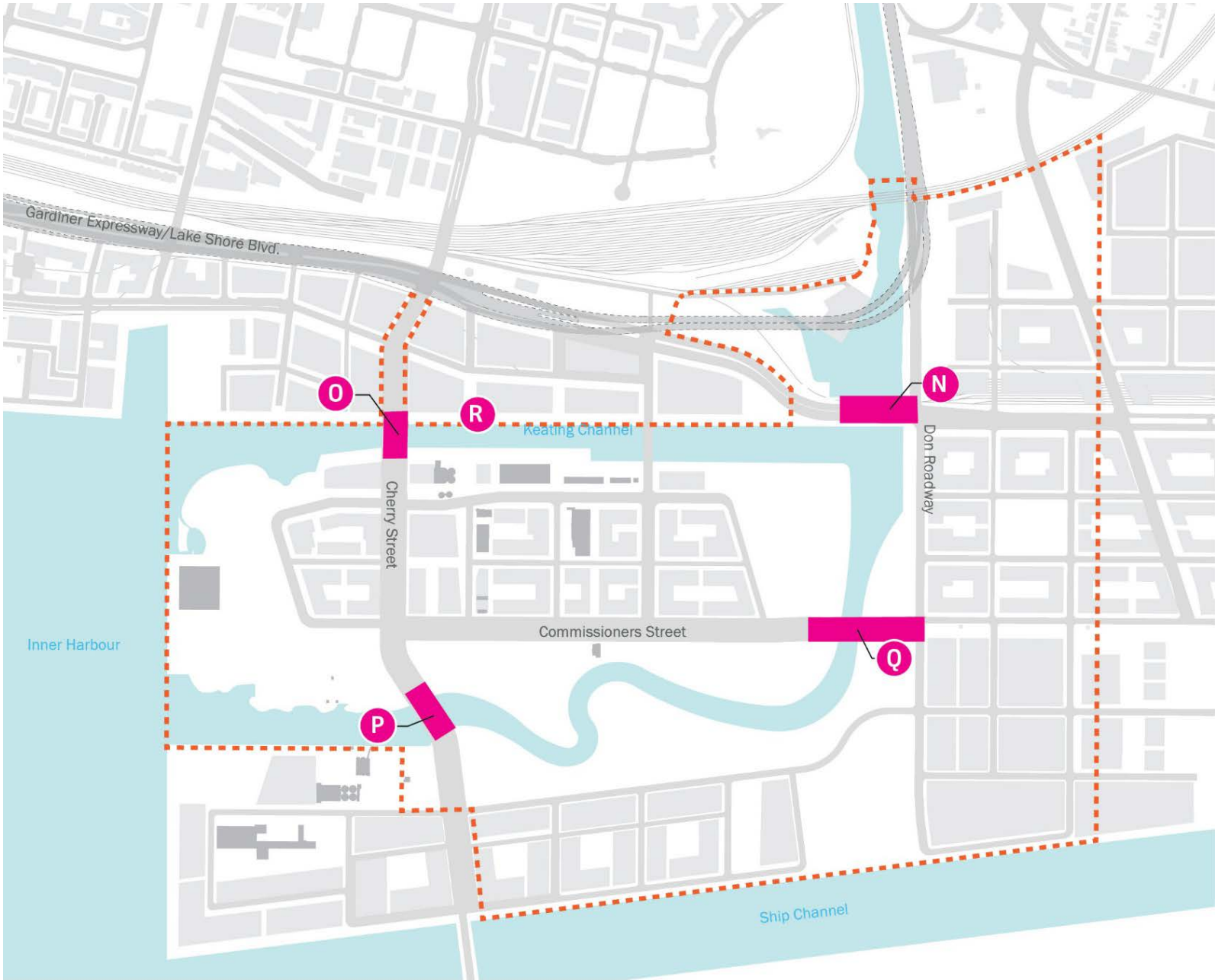
-  Port Lands Flood Protection and Enabling Infrastructure Boundary
-  Earthworks/Flood Protection
-  Parks
-  Bridges & Structures
-  Roads and Municipal Infrastructure



Bridges and Structures

- A Cherry Street Stormwater and Lakefilling
- B Polson Slip Naturalization
- C Flood Protection - River Valley
- D Don Greenway (Spillway & Wetland)
- E Don Roadway Valley Wall Feature
- F East Harbour Flood Protection Land Form
- G Sediment and Debris Management Area
- H Flow Control Weirs
- I Eastern Avenue Flood Protection
- J Villiers Island Grading
- K Keating Channel Modifications
- L Promontory Park South
- M River Park
- N Lake Shore Road and Rail Bridge Modifications
- O Cherry Street Bridge North
- P Cherry Street Bridge South
- Q Commissioners Street Bridge
- R Old Cherry Street Bridge Demolition
- S Site Wide Municipal Infrastructure
- T Don Roadway
- U Hydro One Integration
- V Commissioners Street
- W Cherry Street Re-alignment

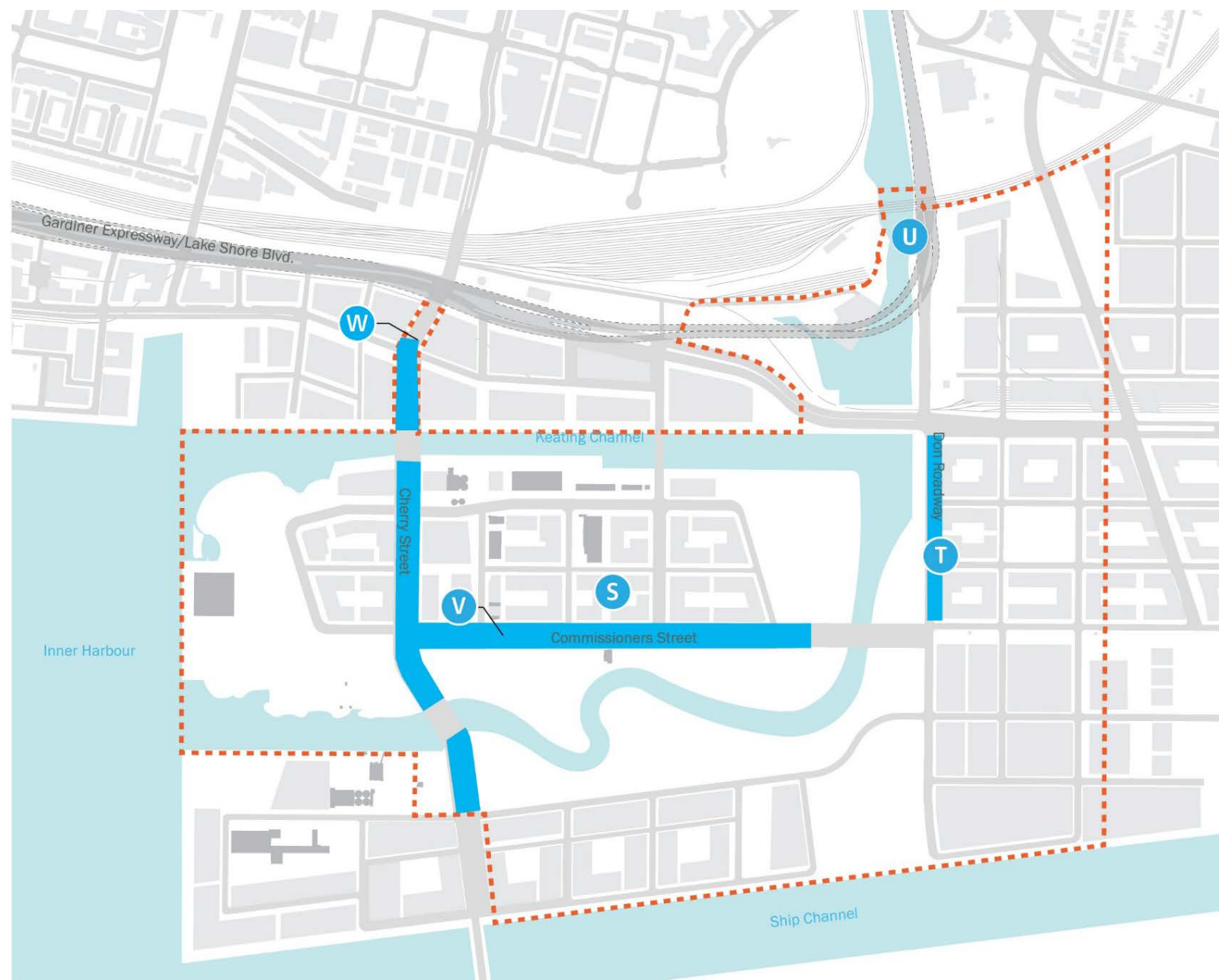
- Port Lands Flood Protection and Enabling Infrastructure Boundary
- Earthworks/Flood Protection
- Parks
- Bridges & Structures
- Roads and Municipal Infrastructure



Roads and Municipal Services




- A Cherry Street Stormwater and Lakefilling
- B Polson Slip Naturalization
- C Flood Protection - River Valley
- D Don Greenway (Spillway & Wetland)
- E Don Roadway Valley Wall Feature
- F East Harbour Flood Protection Land Form
- G Sediment and Debris Management Area
- H Flow Control Weirs
- I Eastern Avenue Flood Protection
- J Villiers Island Grading
- K Keating Channel Modifications
- L Promontory Park South
- M River Park
- N Lake Shore Road and Rail Bridge Modifications
- O Cherry Street Bridge North
- P Cherry Street Bridge South
- Q Commissioners Street Bridge
- R Old Cherry Street Bridge Demolition
- S Site Wide Municipal Infrastructure
- T Don Roadway
- U Hydro One Integration
- V Commissioners Street
- W Cherry Street Re-alignment

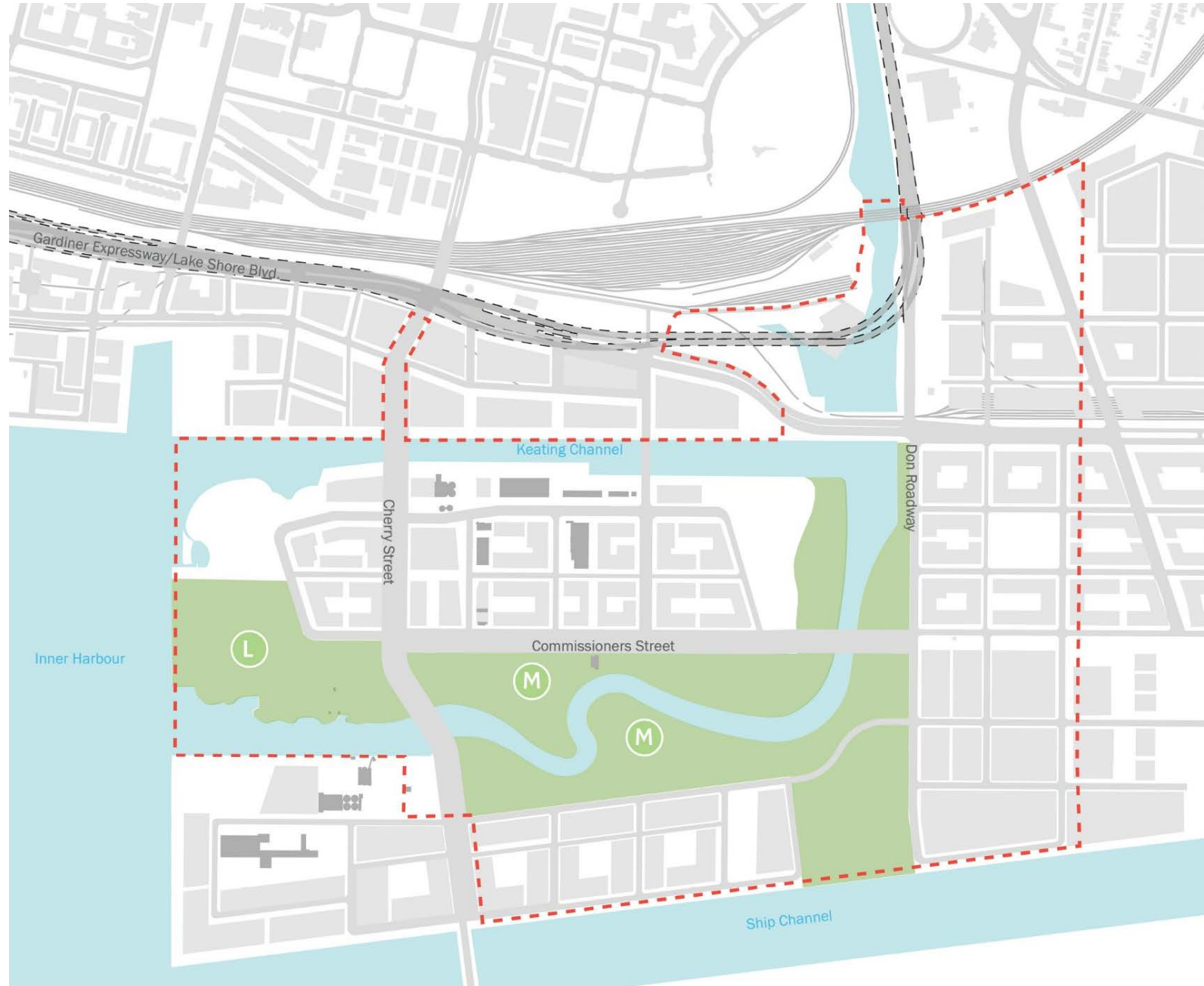
- Port Lands Flood Protection and Enabling Infrastructure Boundary
- Earthworks/Flood Protection
- Parks
- Bridges & Structures
- Roads and Municipal Infrastructure



Parks

- A Cherry Street Stormwater and Lakefilling
- B Polson Slip Naturalization
- C Flood Protection - River Valley
- D Don Greenway (Spillway & Wetland)
- E Don Roadway Valley Wall Feature
- F East Harbour Flood Protection Land Form
- G Sediment and Debris Management Area
- H Flow Control Weirs
- I Eastern Avenue Flood Protection
- J Villiers Island Grading
- K Keating Channel Modifications
- L Promontory Park South
- M River Park
- N Lake Shore Road and Rail Bridge Modifications
- O Cherry Street Bridge North
- P Cherry Street Bridge South
- Q Commissioners Street Bridge
- R Old Cherry Street Bridge Demolition
- S Site Wide Municipal Infrastructure
- T Don Roadway
- U Hydro One Integration
- V Commissioners Street
- W Cherry Street Re-alignment

-  Port Lands Flood Protection and Enabling Infrastructure Boundary
-  Earthworks/Flood Protection
-  Parks
-  Bridges & Structures
-  Roads and Municipal Infrastructure



Where are we now?

A decade of planning

2006

Don Mouth
Naturalization and Port
Lands Flood Protection
Project Environmental
Assessment (DMNP EA)
began

2011

Port Lands
Acceleration Initiative

2015

DMNP EA and Lower
Don Lands EA approved

2017

\$1.25 billion funding for
Port Lands Flood
Protection

Port Lands Framework
Plan and Villiers Island
Precinct Plan approved

2007

International design
competition

2012

Port Lands
Framework Plan and
Villiers Island
Precinct Plan began

2016

Due Diligence report
for Port Lands Flood
Protection completed

Where are we now?



Feb 2018

Port Lands Flood
Protection (PLFP)
Community
consultation #1

July 2018

PLFP community
consultation #2

Spring 2019

Design for parks & river
is 60% complete

May 2018

Design river, parks,
roads & bridges is 30%
complete

Fall 2018

River excavation begins

Design for parks & river is
50% complete

Design complete on
Cherry Street & Cherry
Street Bridge North

Fall 2019

Design for
Commissioners Street is
complete

Construction Progress

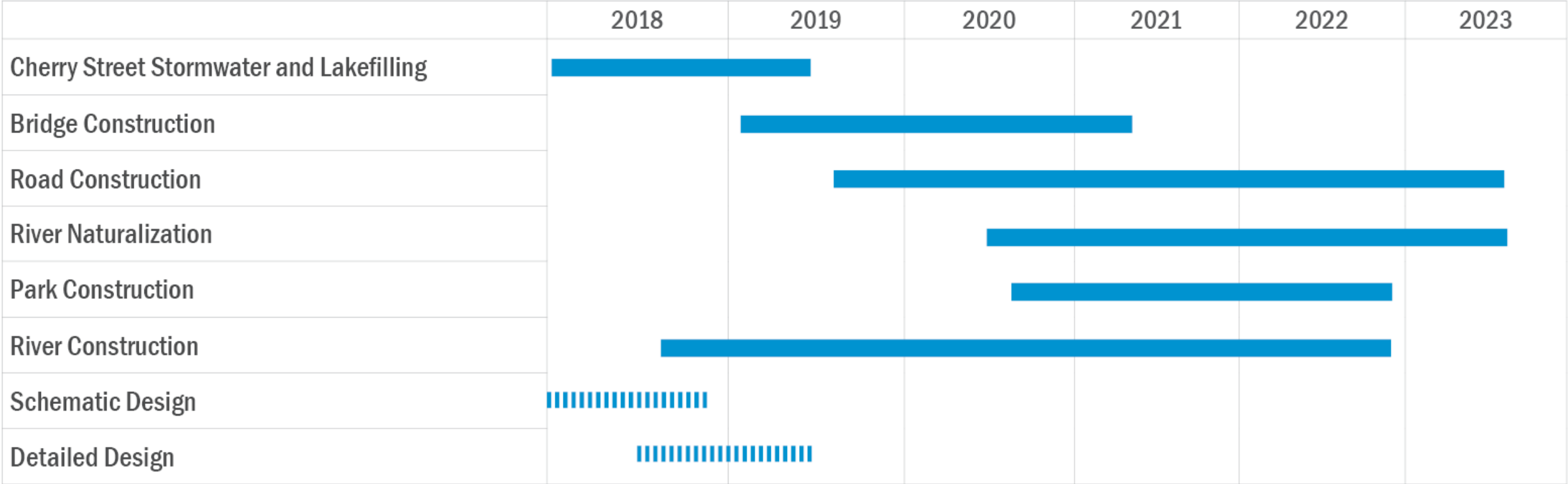








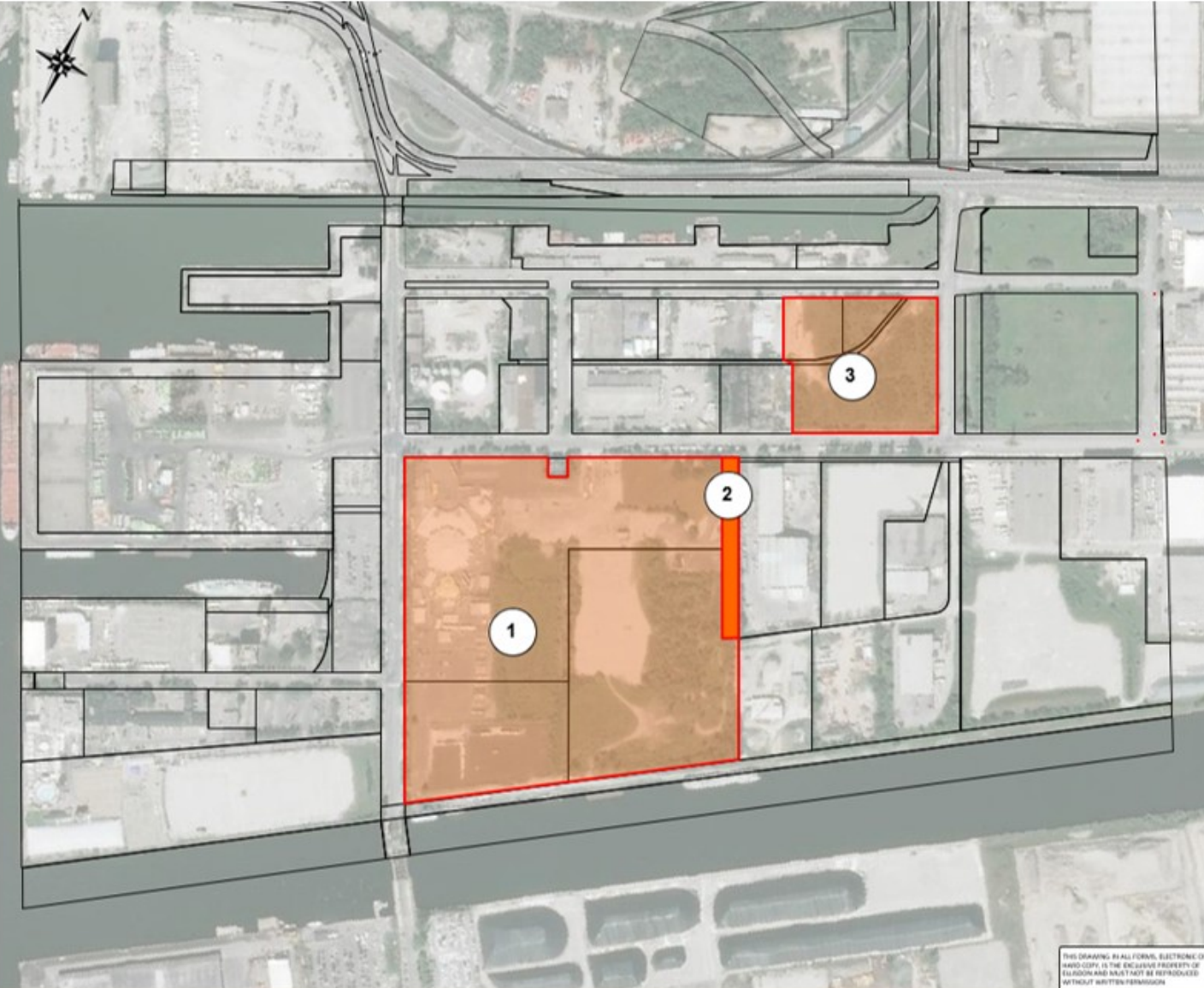
Construction Schedule



Construction Schedule: July 2018 – September 2018

July-2018 to September 2018

1. Site preparation
2. Install temporary structure between future River Valley and Don Greenway
3. Site preparation



 Underway  Completed

Construction Schedule: September 2018 – December 2018

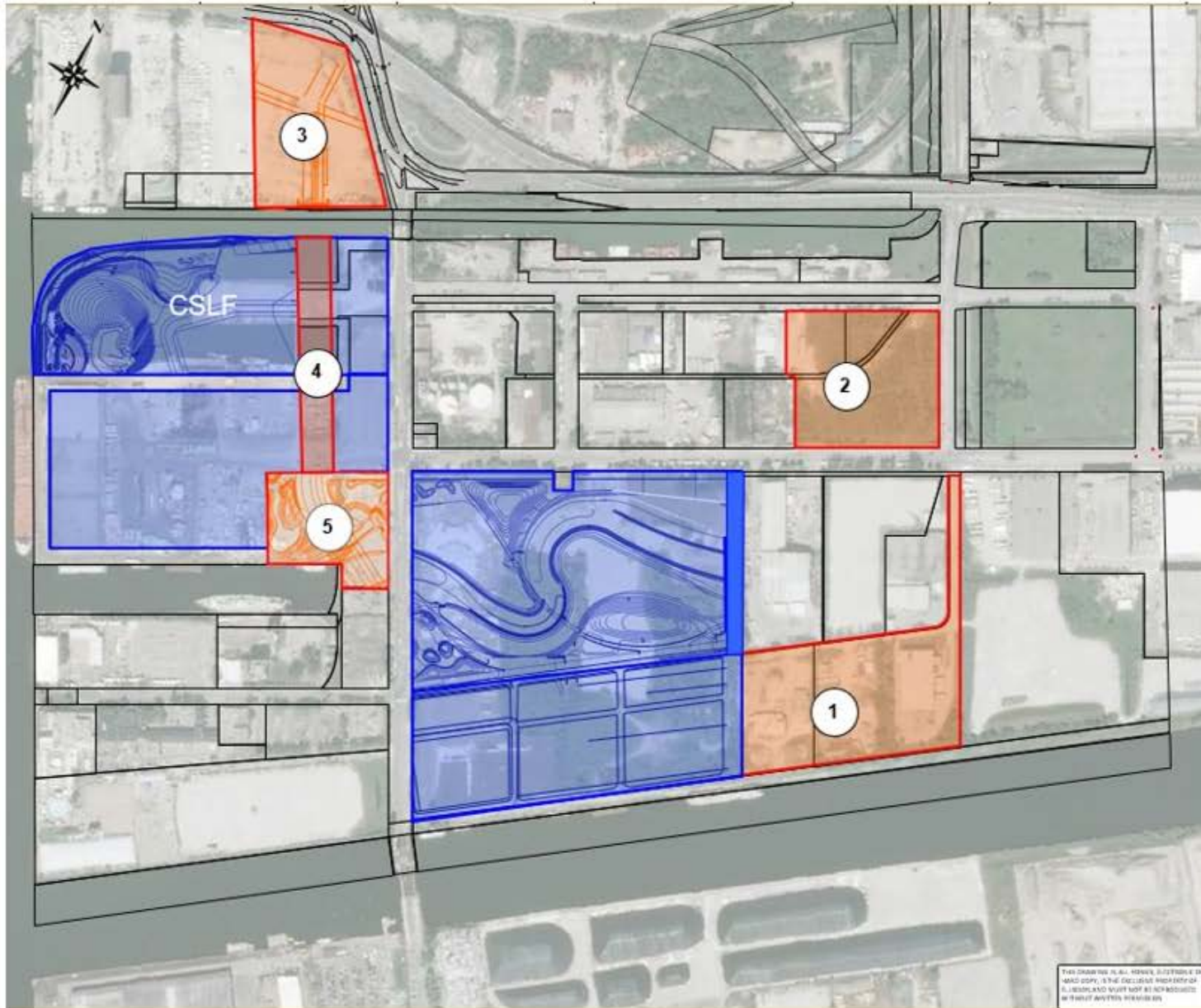


September 2018 to 31-Dec-2018

1. River Valley excavation
2. Construction staging and site preparation
3. Screening area for excavated soil
4. Soil treatment facility #1
5. Storage for excavated soil
6. Storage for excavated soil

 Underway  Completed

Construction Schedule: January 2019 – April 2019

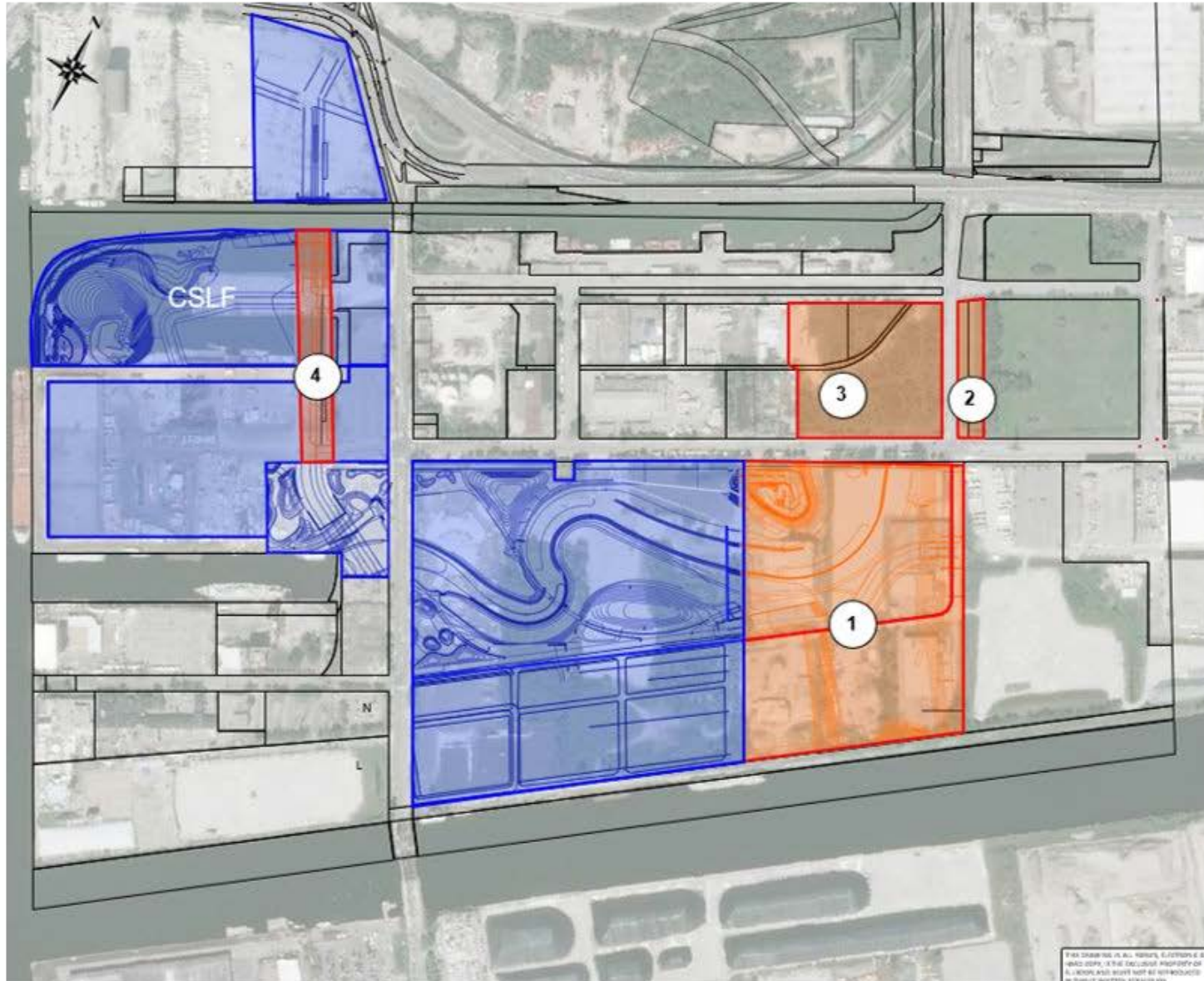


January 2019 – April 2019

1. Demolition and site preparation for future Don Greenway (south of Commissioners)
2. Demolition and site preparation for future Don Greenway (north of Commissioner)
3. Cherry Street Bridge north foundation work, new Cherry Street realignment from Lake Shore Boulevard to bridge
4. Cherry Street realignment and site preparation, construction staging
5. Cherry Bridge South foundation work

 Underway  Ongoing Construction

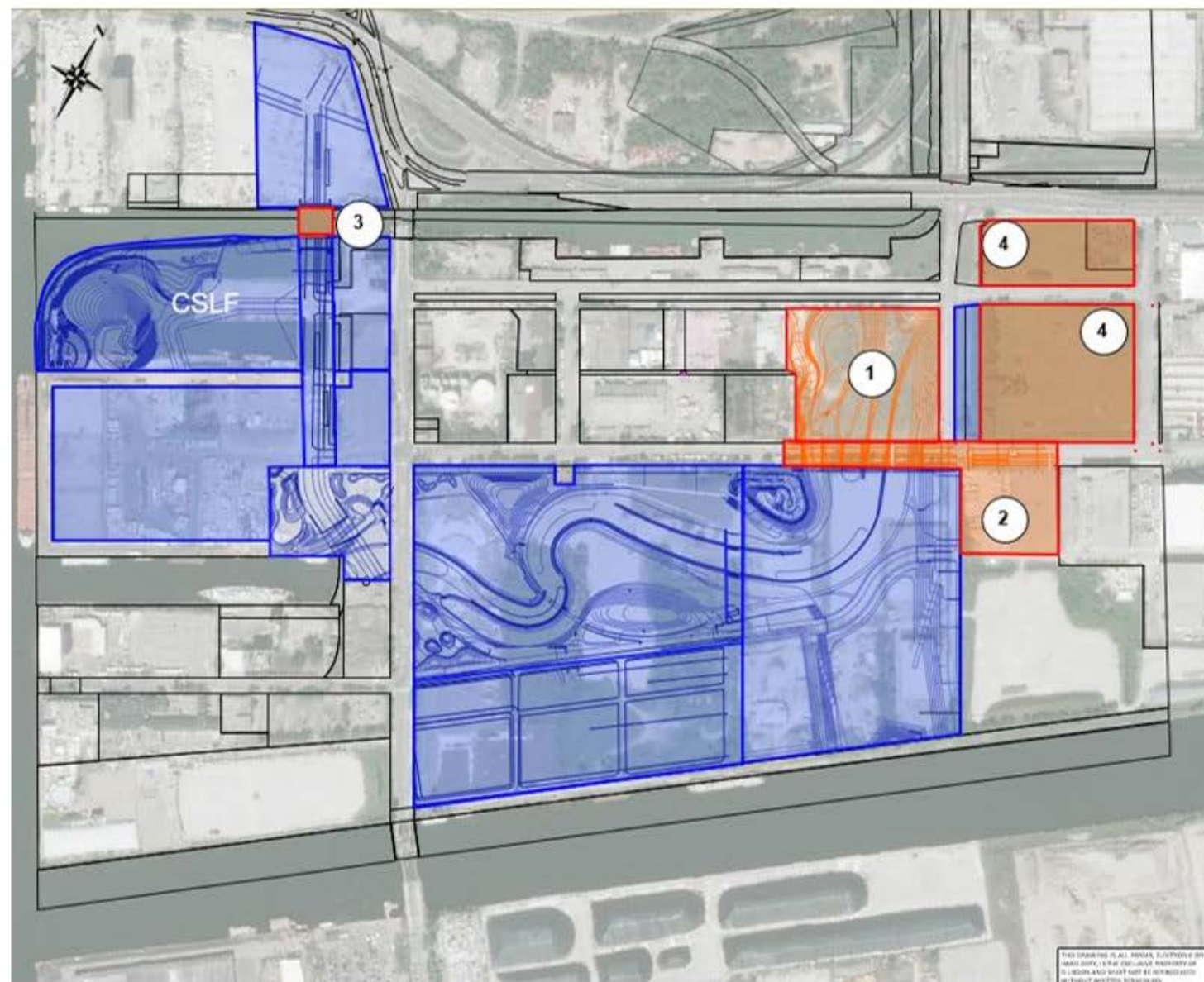
Construction Schedule: May 2019 – July 2019



May 2019-July 2019

1. Excavation of Don Greenway (south)
2. Hydro One integration work
3. Soil storage area
4. Cherry Street realignment

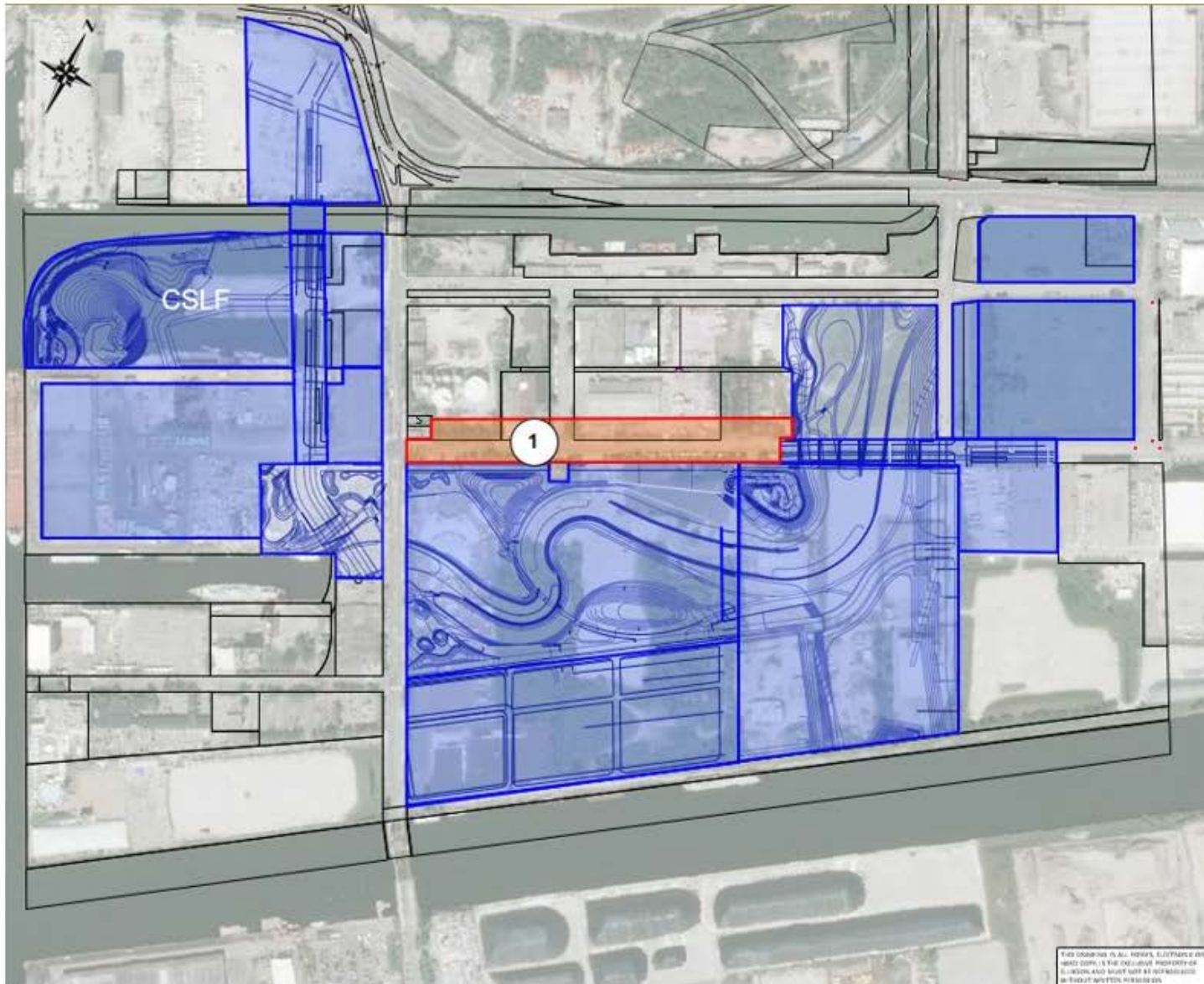
Construction Schedule: August 2019 – October 2019



August 2019-October 2019

1. Excavation of Don Greenway (north)
2. Commissioners Street Bridge
3. Cherry Street Bridge North
4. Soil storage and site preparation for Don Roadway valley wall feature

Construction Schedule: November 2019 – December 2019



November 2019-December 2019

**1. Commissioners Street
demolition (Old Cherry Street to Don
Roadway)**



Underway



Ongoing Construction

Matthew Urbanski, Principal, MVVA

Herb Sweeney, Associate Principal, MVVA

James Roche, Partner, DTAH

Michael Meschino, Principal, Entuitive