

April 2021

Construction Notice #18: Port Lands Flood Protection



Construction manager



Traffic Notice: Lane Restrictions on the Martin Goodman Trail

April - November 2021

Starting in April, expect intermittent lane closures on the Martin Goodman Trail between Parliament Street and Cherry Street. One lane will always remain open. Signs and flagpersons will direct east-west pedestrian and cyclist traffic. Whenever it is safe, priority will be given to the pedestrians and cyclists. As the work progresses, the path will be cleaned and patch-paved for safety. These closures are needed as we finish work on utilities beneath the new Cherry Street.

To learn more about what we're building, find a project map at portlandsto.ca/project-map.

WHAT TO EXPECT:

- Lane restriction: The Martin Goodman Trail will be reduced to a single lane only for periods of 1-2 days at a time
- Closures will shift between eastbound and westbound lanes
- Delays: Cyclists and pedestrians will be prioritized when safe, but expect some wait time
- Construction noise and dust



Above: This map shows the section of the Martin Goodman Trail (MGT) where closures will occur between March-November 2021, and the location of signage and flagpersons.

Truck crossing at Lower Don Trail

Starting in March and continuing through spring 2021, construction vehicles will intermittently cross the Lower Don Recreational Trail on weekdays between the hours of 7 a.m. - 5 p.m. See map below for truck routes. Currently, no work is scheduled on weekends. Crews will be clearing trees and preparing the area for excavation. This is the future Sediment and Debris Management Area west of Don Roadway and north of Lake Shore Boulevard (see map below). Widening and deepening the Don River at this location is a critical part of our design for flood protection.

WHAT TO EXPECT:

- Signs are installed on the trail to alert cyclists and pedestrians to possible truck crossing.

- Signs will also be installed to ensure truck operators are aware that they must yield to cyclists and pedestrians.
- A flagperson will control traffic at these locations, giving priority to pedestrians and cyclists.
- The trail will be cleaned continuously.



Above: This map shows where trucks will cross the Lower Don Trail.

Road Work

Commissioners Street remains closed between Cherry Street and Don Roadway. Don Roadway remains closed between Commissioners Street and Villiers Street. Both closures will remain in place until Summer 2022.

Future Road Work

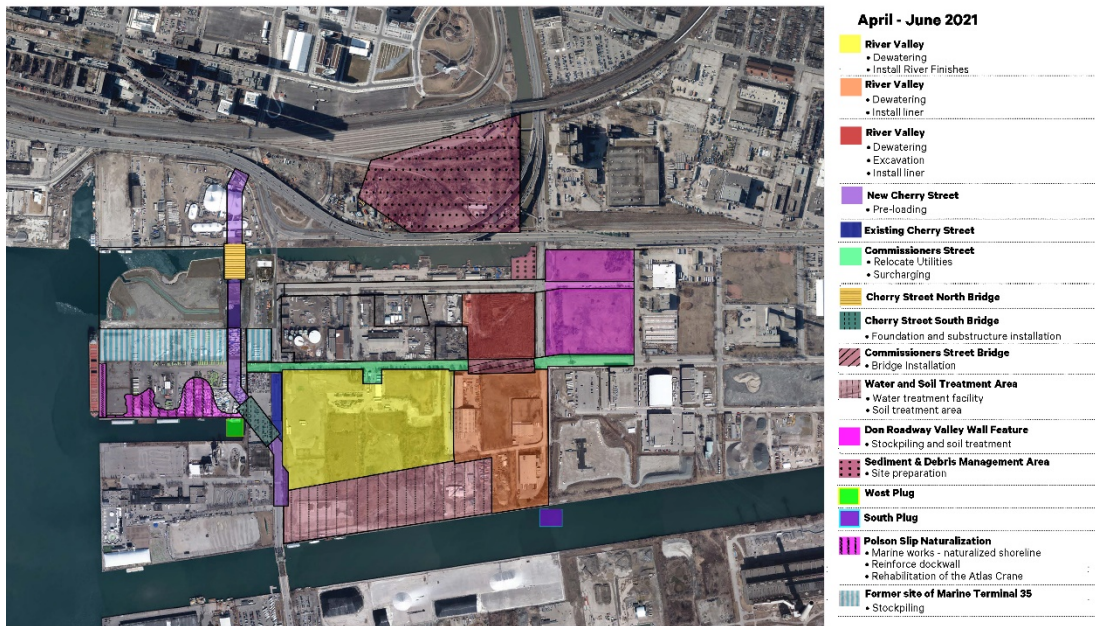
Cherry Street will be realigned west of its current path and connected to a new bridge over the Keating Channel. The existing Cherry Street and lift bridge will remain open until we can open new Cherry Street and the new Cherry Street Bridge.

WHAT TO EXPECT:

Trucks will haul material from the north side of the future alignment of Cherry Street, along Lake Shore Boulevard, south on existing Cherry Street and into the site north of the Ship Channel.

Crews will increase street cleaning using water trucks to reduce dust.

Construction Update

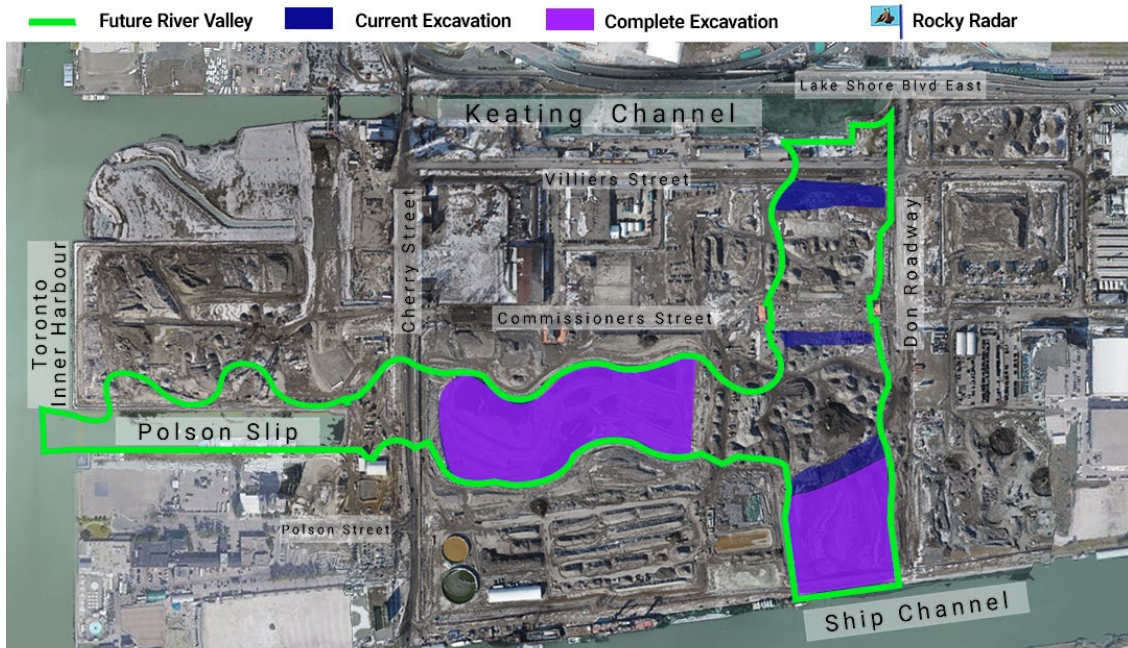


Click [here](#) to open a larger version of this map.

Ongoing Work

River Valley

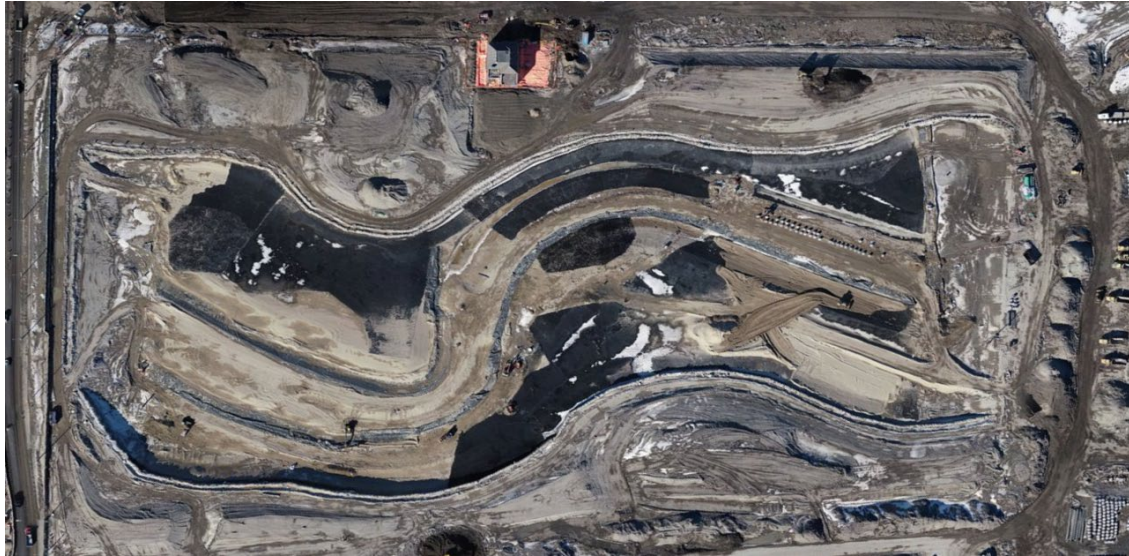
Excavation is complete in the central section of river valley and we've finished installing the river liner and reactive treatment layer. The next step is to install the river finishes – rocks and other materials that will become the bottom of the new river.



March 25, 2021

@TheRockRipper

Above: Deep excavation is complete in the central river valley and nearly complete in the Don Greenway/Spillway at the south end of the site. We've also started excavation south of Villiers Street. Follow Rocky [@TheRockRipper](https://twitter.com/TheRockRipper) on Twitter for more updates.



Above: The black areas in this aerial view of the central river valley show the reactive treatment layer (sand mixed with activated carbon). It is the last layer of the of the river liner which prevents contaminants from leaching up into the new river. Liner installation is complete.



Above: Deep excavation of the Don Greenway, north of the Ship Channel. On the left, the large mound of soil is a future island that has been dubbed 'the avocado'.



Above: Left: A rendering of the Port Lands in 2024, showing the location of the Don Greenway 'Avocado'. Right: an aerial survey shows the 'avocado' taking shape.

Water Treatment



Above: This pre-treatment pond is the first step in the water treatment process. Select contaminants and some sediment are removed from water that is pumped out of the excavated river valley. The water is then pumped to the water treatment plant. Once through the whole system, the water is cleaner than Lake Ontario.

Cherry Street South Bridge Foundations



Above: Crews are installing foundations for the Cherry Street South Bridge, which will cross the new mouth of the Don River where it flows into the Polson Slip.

See more photos from the site [here](#).

Questions?

To learn more about this project, please visit PortLandsto.ca.

Use this [online form](#) to send us questions or concerns about construction or email us at plfp@ellisdon.com.

For urgent construction related issues, please contact Cameron Coleman, EllisDon, at 416-464-3583.



Waterfront Toronto

20 Bay Street, Suite 1310, Toronto, Ontario M5J 2N8

T. 416-214-1344 | waterfronttoronto.ca | info@waterfronttoronto.ca

Canada

Ontario

