

July 2022

Construction Notice #32: Port Lands Flood Protection & Lake Shore Boulevard East Projects



Construction manager



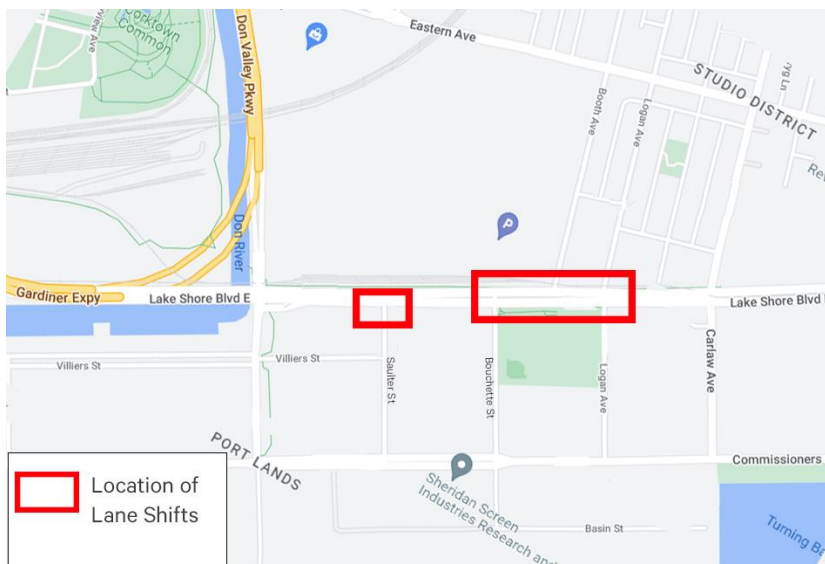
Past construction notices, as well as information about all ongoing construction can be found on the [construction page on the project website \(https://portlandsto.ca/construction/\)](https://portlandsto.ca/construction/).

Traffic Update

Overnight Lane Shifts on Lake Shore Boulevard East between Saulter Street and Logan Avenue: July 25-October 2022

To facilitate utility connections under the reconstructed Lake Shore Boulevard East, there will be nightly lane shifts at four intersections along Lake Shore Boulevard. Lanes will be shifted on both Lake Shore Boulevard and the intersecting streets from Monday, July 25 until the end of October. Work will focus on one intersection at a time, for approximately 5-10 days each. During this work, lane shifts will only be in effect from 10:00 p.m. to 6:00 a.m. Work will take place at the following intersections, starting at Saulter Street, and heading east:

- Saulter Street and Lake Shore Boulevard East
- Bouchette Street and Lake Shore Boulevard East
- Booth Avenue and Lake Shore Blvd. East
- Logan Avenue and Lake Shore Boulevard East



Above: A map showing the areas with lane shifts on Lake Shore Boulevard East and side streets.

WHAT TO EXPECT

- Lane closures along Lake Shore Boulevard East, between Saulter Street and Logan Avenue. At least one lane of traffic will be maintained in each direction on Lake Shore.
- Lane closures will be marked with traffic barrels
- Traffic will be directed into the remaining open lanes
- Road plates will be present in the work area during the day
- Lane restrictions on the north-south streets connecting to Lake Shore Boulevard
 - Saulter Street, south of Lake Shore Boulevard
 - Bouchette Street, south of Lake Shore Boulevard
 - Booth Avenue, north of Lake Shore Boulevard
 - Logan Avenue, both north and south of Lake Shore
 - Two-way traffic will be maintained on all side streets

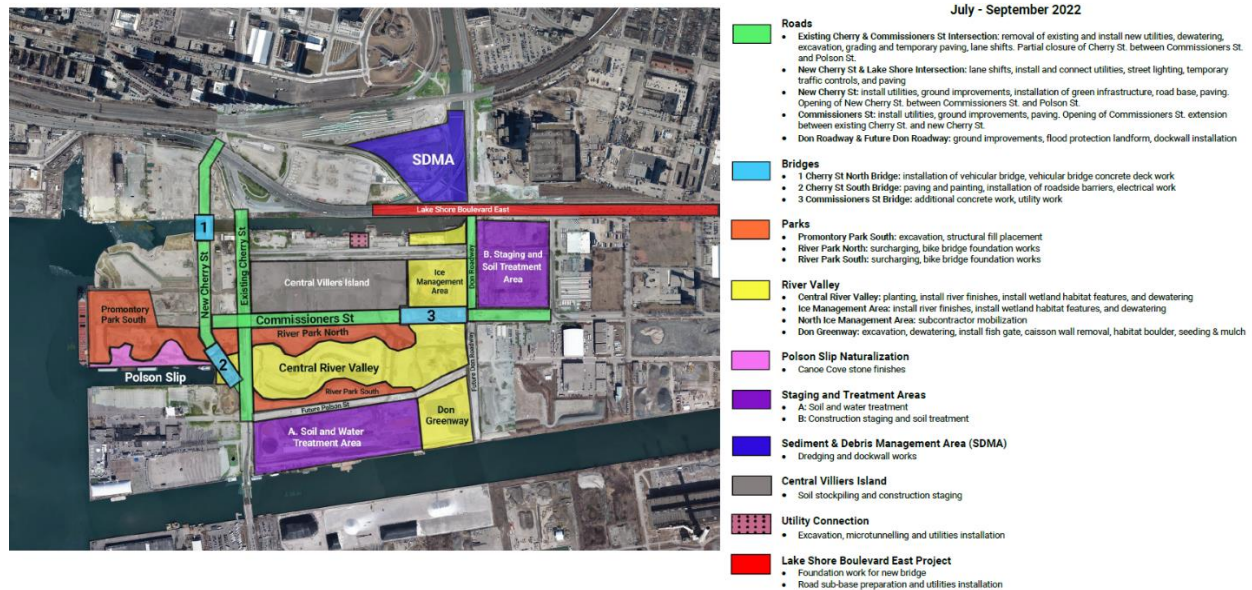
Upcoming Work

Cherry Street between Commissioners Street and Polson Street: Late August 2022

Crews will be working over one weekend in late August to connect the new Cherry Street alignment to existing Polson Street. This work may require the closure of the northbound lanes on existing Cherry Street between Polson Street and Commissioners Street for one weekend. More information about detour routes and road closures will be available in our next notice.

The new alignment of Cherry Street between Polson and Commissioners Streets will be opening in late August. Once open, existing Cherry Street will be closed from Commissioners Street to Polson Street so we can continue excavating the new river valley.

Construction Update



Above: A map showing the upcoming work in various areas of the Port Lands. To open a larger version of this map, visit the [Port Lands Flood Protection Construction Schedule Webpage](https://portlandsto.ca/multimedia/port-lands-flood-protection-construction-schedule-2/) (<https://portlandsto.ca/multimedia/port-lands-flood-protection-construction-schedule-2/>)

Canoe Cove Excavation



Above: Excavation of 'Canoe Cove' on the north side of Polson Slip is complete. Crews are now creating small islands in the cove. Once complete, it will be part of Promontory Park South and feature a place to launch small watercraft with little islands to paddle around.

Cherry Street North Bridge Arrival



Above: The cycling, pedestrian and vehicular bridge for the Cherry Street North crossing arrived in early July. Like the other bridges, it travelled along the St. Lawrence Seaway before being moved into its location. In this photo you can see it floating in the Keating Channel, perpendicular to the transit bridge that arrived in 2020.

Pedestrian Bridge Installation



Above: The pedestrian bridges were pre-fabricated and arrived on a truck. Then they were lifted into place by a crane.



Above: Two pedestrian bridges were installed in June. This one spans the wetland in River Park South.



Above: The second of the two pedestrian bridges crosses what will be the main river channel, to connect the parks on either bank.

Plantings



Above: We've started planting wetland plants on the north side of the main river channel. The large logs on the right will also be part of the wetland, and provide variety to the habitat.



Above: Plants have started to grow out of the Fibre-Encapsulated Lifts. These lifts line the river channel and some areas of the wetlands to build up the banks. The fibre provides stability to the soil and prevents erosion until the roots of the plants become established.

Ice Management Area



Above: Excavation is complete under the Commissioners Street Bridge. Now we're installing a river liner in the ice management area to prevent any contaminants in the soil from seeping up into the new river.

Lake Shore Bridge



Above: The south half of the Lake Shore Bridge over the Don River has been removed. Crews are now excavating on the west side of the bridge to make the river wider in this location and install new piers for the lengthened bridge.

Questions?

To learn more about this project, please visit the [Port Lands Flood Protection project website](https://portlandsto.ca/) (<https://portlandsto.ca/>).

To send us questions or concerns about construction, use this [online inquiry form](https://portlandsto.ca/contact-us/) (<https://portlandsto.ca/contact-us/>).

You can also email us at plfp@ellisdon.com.

For urgent construction related issues, please contact Cameron Coleman, EllisDon, at 416-594-2198.

Waterfront Toronto

20 Bay Street, Suite 1310, Toronto, Ontario M5J 2N8

T. 416-214-1344 | waterfronttoronto.ca | info@waterfronttoronto.ca

