

PORTLANDS FLOOD PROTECTION

WHERE ARE THE PORT LANDS?

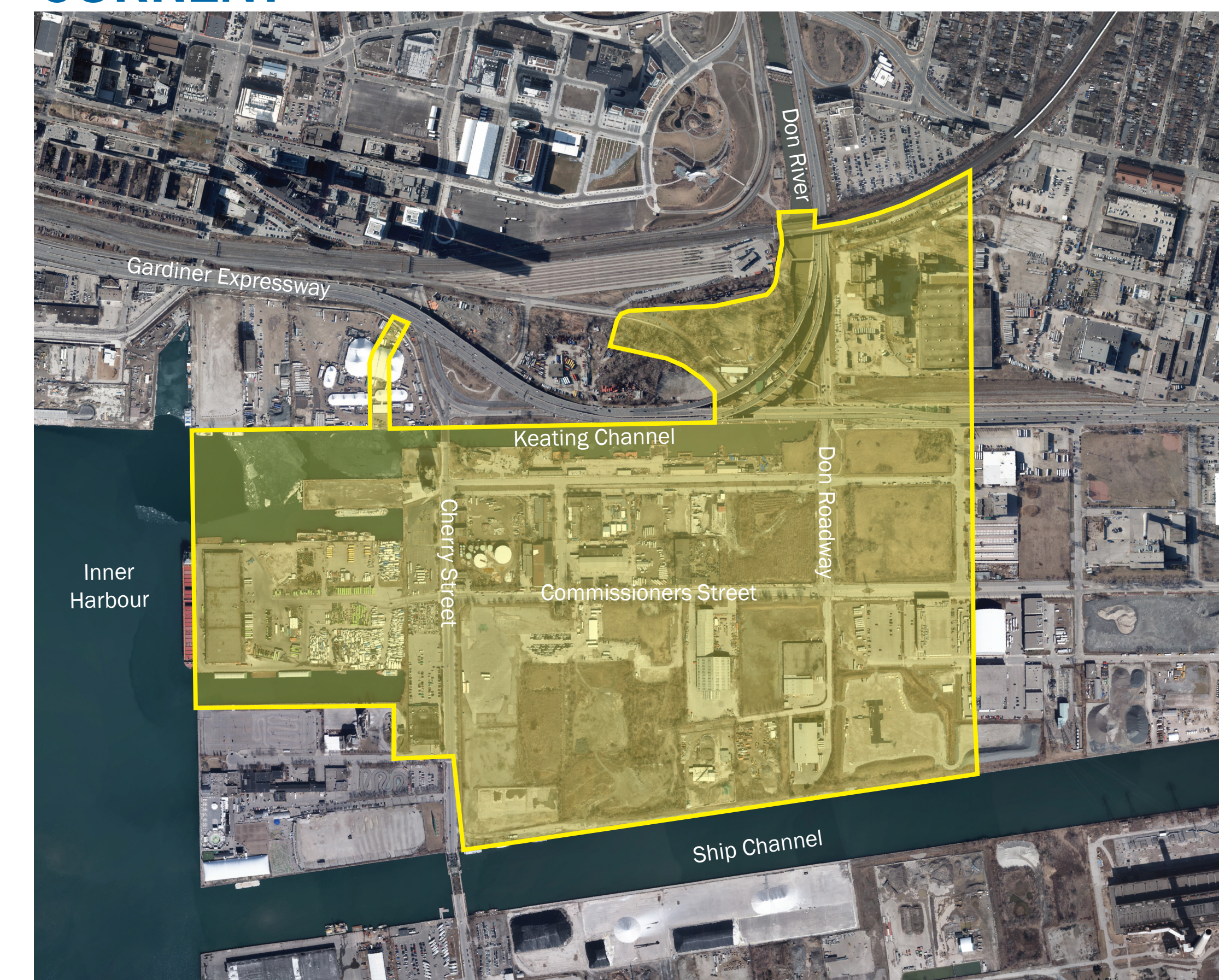


The Port Lands extends southeast of Toronto's downtown core into Lake Ontario and includes over 300 hectares of land along the waterfront. Some familiar landmarks include: Cherry Beach, Tommy Thompson Park, and the Hearn Generating Station.

Looking at the map above, you can see that the Port Lands is bounded by the Keating Channel and Lake Shore Boulevard in the north, the Toronto inner harbour in the west, Ashbridges Bay in the east and Lake Ontario and Tommy Thompson Park in the south.

WHERE ARE WE BUILDING?

CURRENT



FUTURE



PORT LANDS FLOOD PROTECTION



This graphic shows the area at risk of flooding from the Don River, shaded in blue.

WHAT IS PORT LANDS FLOOD PROTECTION?

To protect parts of the Port Lands, South Riverdale and Leslieville from flooding, we plan to reconnect the Don River to Lake Ontario by creating a naturalized river mouth.

We are creating two new outlets for the river so floodwaters can flow safely into the inner harbour. This includes a kilometer-long river valley. We are also cleaning the soil after over a century of industrial use, building new roads, bridges, utilities and public trails.

WHY THIS MATTERS?

- **More waterfront for everyone.** More access to the lake so anyone who visits the Port Lands can enjoy it.
- **Protection from the affects of climate change.** Protecting 240 hectares of land from flooding.
- **Improving the natural environment.** We are cleaning contaminated soil and building 40 hectares of parks and greenspace.
- **More jobs and economic growth.** This project will contribute over \$4 billion to the Canadian economy.
- **A brighter future.** When this project is complete, the Port Lands will finally become a place where our city can grow and evolve to better meet the changing needs of the people who live here.

WHAT WE'VE HEARD

- Integrate the natural and the urban
- Maximize naturalization opportunities
- Ensure connections for wildlife
- Public access to the water
- Create active transportation/recreational opportunities
- Connection to surrounding neighbourhoods and the broader park system
- Accessibility for diverse groups of people
- Preserve local heritage and culture
- All season use - don't forget about winter



PORT LANDS FLOOD PROTECTION

WHAT ARE WE BUILDING?

In addition to engineering a naturalized river valley, a crucial part of this project involves building new public spaces, roads and bridges and utilities, as well as structures to control water flow and manage sediment and debris.

The work we need to do as part of the Port Lands Flood Protection Project can be grouped into four larger categories: parks, roads and municipal infrastructure, bridges and earthworks/flood protection.

