

# Port Lands Flood Protection Construction Liaison Committee Meeting #1

April 12, 2018



WATERFRONToronto

# Agenda

1. Welcome and Introductions
2. Terms of Reference
3. Project Overview
4. Construction Schedule
5. Construction Impact Mitigation Plan
6. Cherry Street Stormwater and Lakefilling project
7. Discussion and Feedback

# Terms of Reference



WATERFRONToronto

## Purpose and Mandate

- Effective communication and consultation with members of the public, local businesses and other stakeholders is vital to the success of this project.
- The Construction Liaison Committee (CLC) will provide a structured forum for residents, businesses, land owners and other special sector groups in the vicinity of the project area to discuss construction of Port Lands Flood Protection.
- The mandate of the CLC is to liaise with the Project Team during construction to monitor and report on the impacts of construction during the project, and bring forward any issues (e.g. noise, dust, odour and traffic) that may arise

# Terms of Reference

## Membership

- The CLC is designed to be a small, focused committee. Members will be selected based on their ability to liaise with their communities/constituencies and the Project Team.
- The Project Team will be represented by:
  - Waterfront Toronto
  - Toronto and Region Conservation (TRCA)
  - EllisDon (Constructor)
  - Consultants as required
  - Representatives of partner agencies and City of Toronto staff as required

# Terms of Reference

## Roles and Responsibilities

CLC community participants will:

- Participate in regular meetings
- Consider any matters, issues or information referred to them by the Project Team, and provide feedback, advice and recommendations as requested
- Liaise with the Project Team on items such as notification/communications with the group they represent and managing construction impacts
- Be open and receptive and give careful consideration to ideas and perspectives of the Project Team
- Bring forward advice, issues and/or comments on behalf of the organization/community they represent, communicate back to that group and coordinate follow-up meetings or information sessions with individual groups as necessary

## Roles and Responsibilities

The Project Team will:

- Strive to provide accurate, understandable information to Committee participants so they can contribute informed feedback, advice and recommendations
- Ensure that appropriate Project Team staff are present at discussions on specific issues or components relating to the Committee's mandate
- Be open and receptive, and give careful consideration to advice and ideas received from the Committee, and will take appropriate measures to ensure that issues and concerns are resolved

# Terms of Reference

## Meeting schedule

- Meetings will be held every two months
- This schedule may be amended in consultation with the CLC
- A schedule of meetings will be circulated to the CLC annually



# Project Overview



WATERFRONToronto

# Port Lands Flood Protection



Flood Plain



Flood Protected



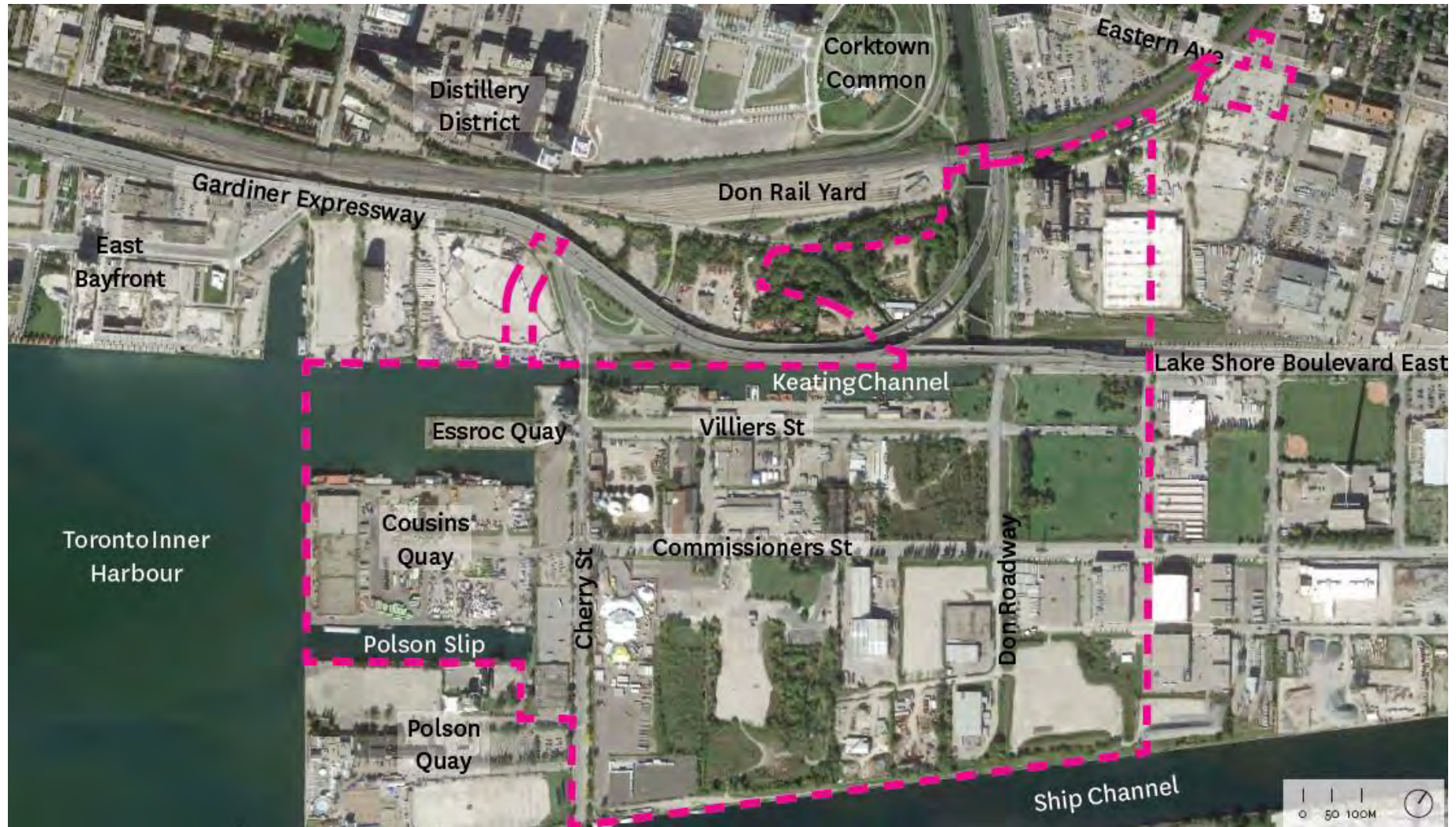
Flood Protection  
Landform



Project area



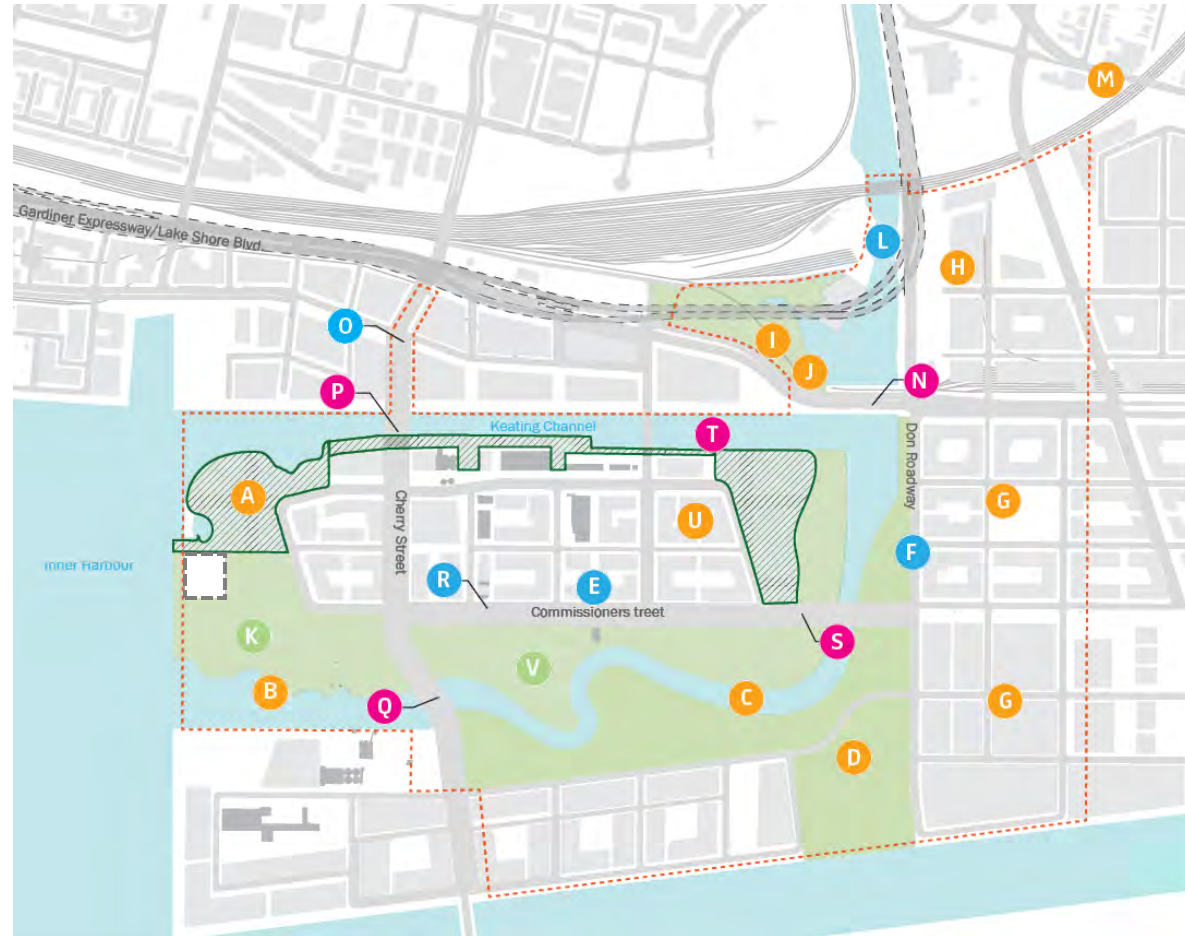
# Project Area – Existing Conditions



# What are we building?

- A** Cherry Street Stormwater and Lakefilling
- B** Polson Slip Naturalization
- C** Flood Protection: River Valley
- D** Don Greenway (Spillway & Wetland)
- E** Site Wide Municipal Infrastructure
- F** Don Roadway
- G** Don Roadway Valley Wall Feature
- H** East Harbour Flood Protection Land Form
- I** Sediment and Debris Management Area
- J** Flow Control Weirs
- K** Promontory Park
- L** Hydro One Integration
- M** Eastern Avenue Flood Protection
- N** Lake Shore Road and Rail Bridge Modifications
- O** Cherry Street Re-alignment (incl. BRT)
- P** Cherry Street Bridge North (incl. BRT)
- Q** Cherry Street Bridge South (vehicular only)
- R** Commissioners Street
- S** Commissioners Street Bridge (vehicular only)
- T** Keating Channel Modifications
- U** Villiers Island Grading
- V** River Park

-  Port Lands Flood Protection and Enabling Infrastructure Boundary
-  Parks
-  Roads and Municipal Infrastructure
-  Bridges & Structures
-  Earthworks/Flood Protection
-  Parks not Included In scope

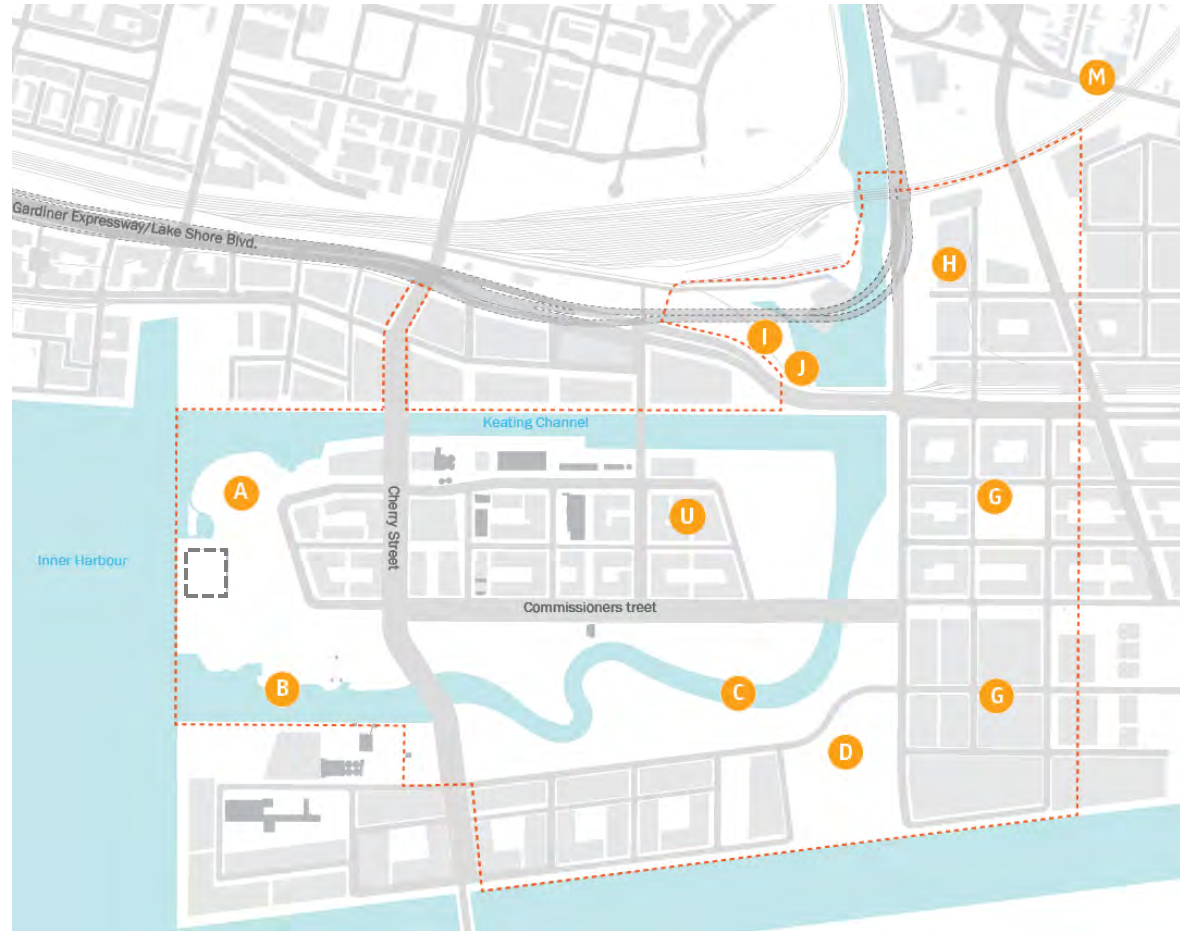




# Earthworks/Flood Protection

- A** Cherry Street Stormwater and Lakefilling
- B** Polson Slip Naturalization
- C** Flood Protection: River Valley
- D** Don Greenway (Spillway & Wetland)
- E** Site Wide Municipal Infrastructure
- F** Don Roadway
- G** Don Roadway Valley Wall Feature
- H** East Harbour Flood Protection Land Form
- I** Sediment and Debris Management Area
- J** Flow Control Weirs
- K** Promontory Park
- L** Hydro One Integration
- M** Eastern Avenue Flood Protection
- N** Lake Shore Road and Rail Bridge Modifications
- O** Cherry Street Re-alignment (incl. BRT)
- P** Cherry Street Bridge North (incl. BRT)
- Q** Cherry Street Bridge South (vehicular only)
- R** Commissioners Street
- S** Commissioners Street Bridge (vehicular only)
- T** Keating Channel Modifications
- U** Villiers Island Grading
- V** River Park

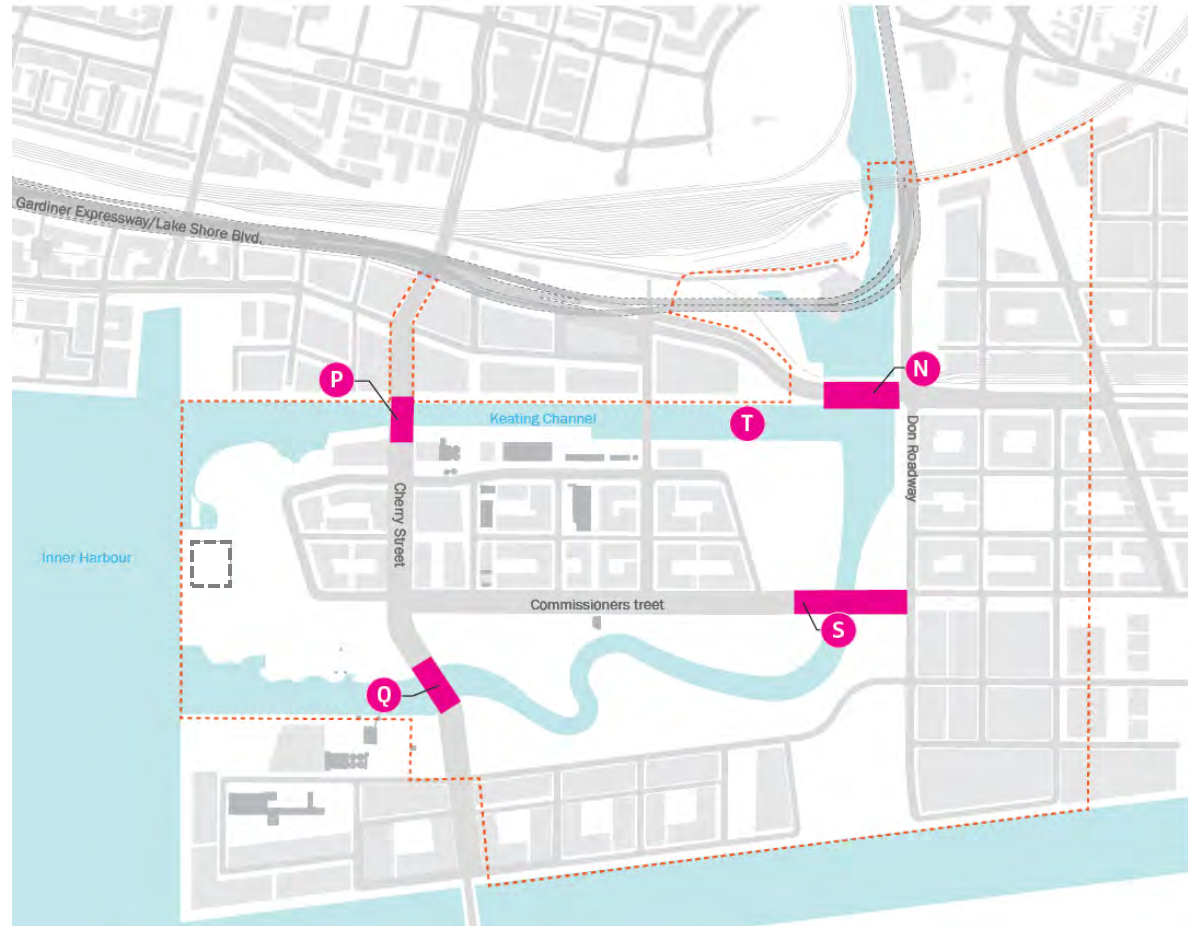
-  Port Lands Flood Protection and Enabling Infrastructure Boundary
-  Parks
-  Roads and Municipal Infrastructure
-  Bridges & Structures
-  Earthworks/Flood Protection



# Bridges and Structures

- A Cherry Street Stormwater and Lakefilling
- B Polson Slip Naturalization
- C Flood Protection: River Valley
- D Don Greenway (Spillway & Wetland)
- E Site Wide Municipal Infrastructure
- F Don Roadway
- G Don Roadway Valley Wall Feature
- H East Harbour Flood Protection Land Form
- I Sediment and Debris Management Area
- J Flow Control Weirs
- K Promontory Park
- L Hydro One Integration
- M Eastern Avenue Flood Protection
- N **Lake Shore Road and Rail Bridge Modifications**
- O Cherry Street Re-alignment (incl. BRT)
- P **Cherry Street Bridge North (incl. BRT)**
- Q **Cherry Street Bridge South (vehicular only)**
- R Commissioners Street
- S **Commissioners Street Bridge (vehicular only)**
- T **Keating Channel Modifications**
- U Villiers Island Grading
- V River Park

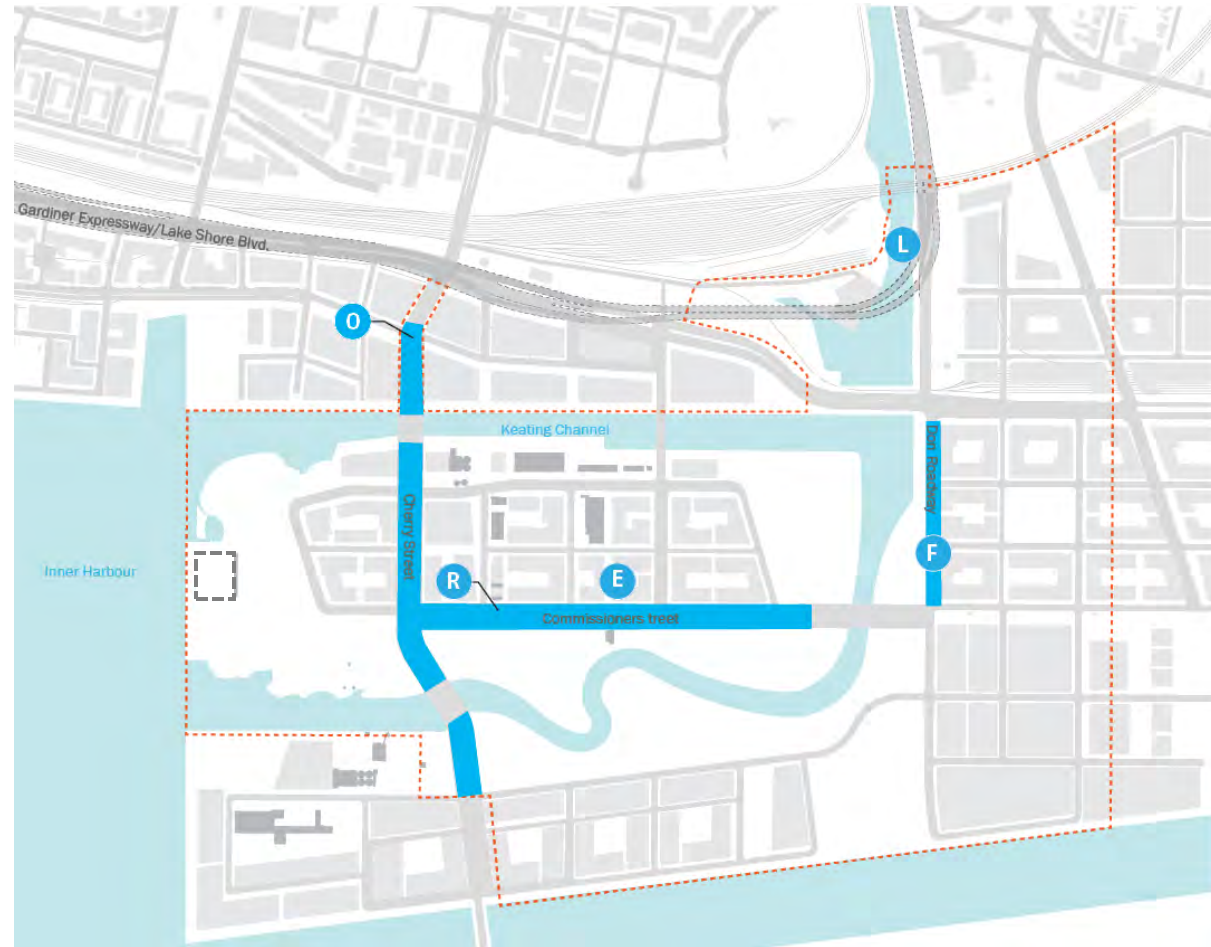
- Port Lands Flood Protection and Enabling Infrastructure Boundary
- Parks
- Roads and Municipal Infrastructure
- Bridges & Structures
- Earthworks/Flood Protection



# Roads and Municipal Services

- A** Cherry Street Stormwater and Lakefilling
- B** Polson Slip Naturalization
- C** Flood Protection: River Valley
- D** Don Greenway (Spillway & Wetland)
- E** Site Wide Municipal Infrastructure
- F** Don Roadway
- G** Don Roadway Valley Wall Feature
- H** East Harbour Flood Protection Land Form
- I** Sediment and Debris Management Area
- J** Flow Control Weirs
- K** Promontory Park
- L** Hydro One Integration
- M** Eastern Avenue Flood Protection
- N** Lake Shore Road and Rail Bridge Modifications
- O** Cherry Street Re-alignment (incl. BRT)
- P** Cherry Street Bridge North (incl. BRT)
- Q** Cherry Street Bridge South (vehicular only)
- R** Commissioners Street
- S** Commissioners Street Bridge (vehicular only)
- T** Keating Channel Modifications
- U** Villiers Island Grading
- V** River Park

-  Port Lands Flood Protection and Enabling Infrastructure Boundary
-  Parks
-  Roads and Municipal Infrastructure
-  Bridges & Structures
-  Earthworks/Flood Protection

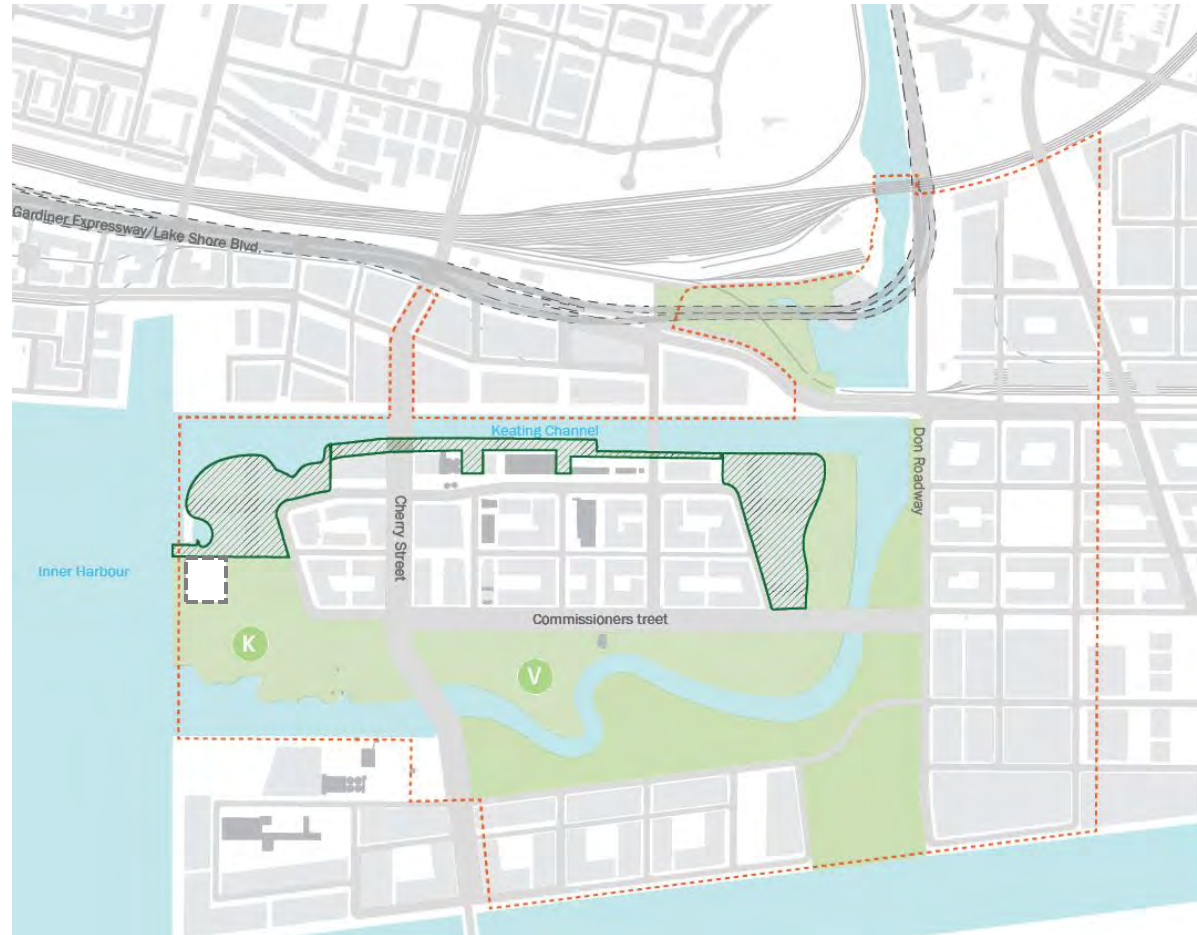




# Parks

- A** Cherry Street Stormwater and Lakefilling
- B** Polson Slip Naturalization
- C** Flood Protection: River Valley
- D** Don Greenway (Spillway & Wetland)
- E** Site Wide Municipal Infrastructure
- F** Don Roadway
- G** Don Roadway Valley Wall Feature
- H** East Harbour Flood Protection Land Form
- I** Sediment and Debris Management Area
- J** Flow Control Weirs
- K** **Promontory Park**
- L** Hydro One Integration
- M** Eastern Avenue Flood Protection
- N** Lake Shore Road and Rail Bridge Modifications
- O** Cherry Street Re-alignment (incl. BRT)
- P** Cherry Street Bridge North (incl. BRT)
- Q** Cherry Street Bridge South (vehicular only)
- R** Commissioners Street
- S** Commissioners Street Bridge (vehicular only)
- T** Keating Channel Modifications
- U** Villiers Island Grading
- V** **River Park**

-  Port Lands Flood Protection and Enabling Infrastructure Boundary
-  Parks
-  Roads and Municipal Infrastructure
-  Bridges & Structures
-  Earthworks/Flood Protection
-  Parks not Included In scope



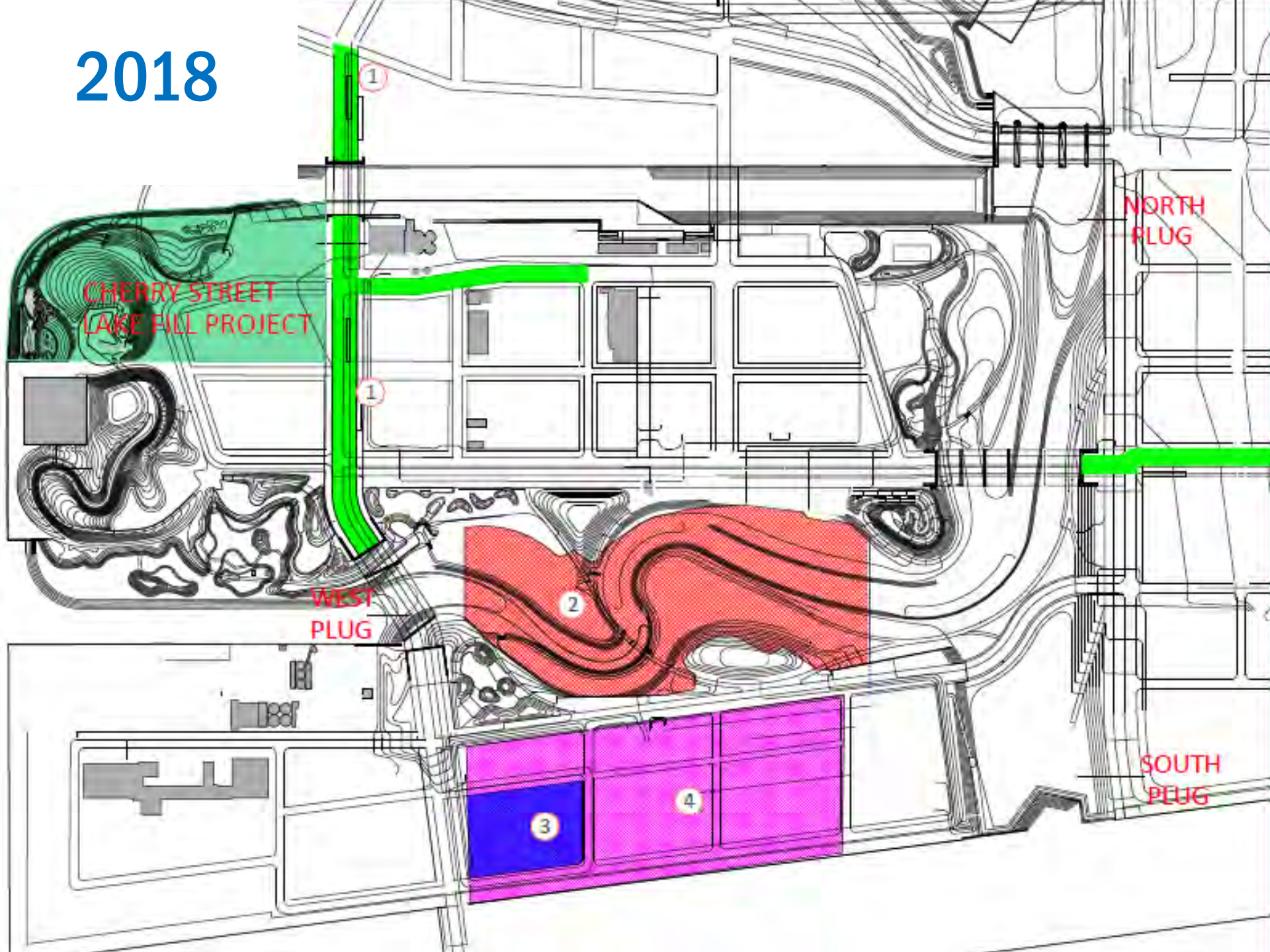


# Construction Schedule



WATERFRONToronto

2018



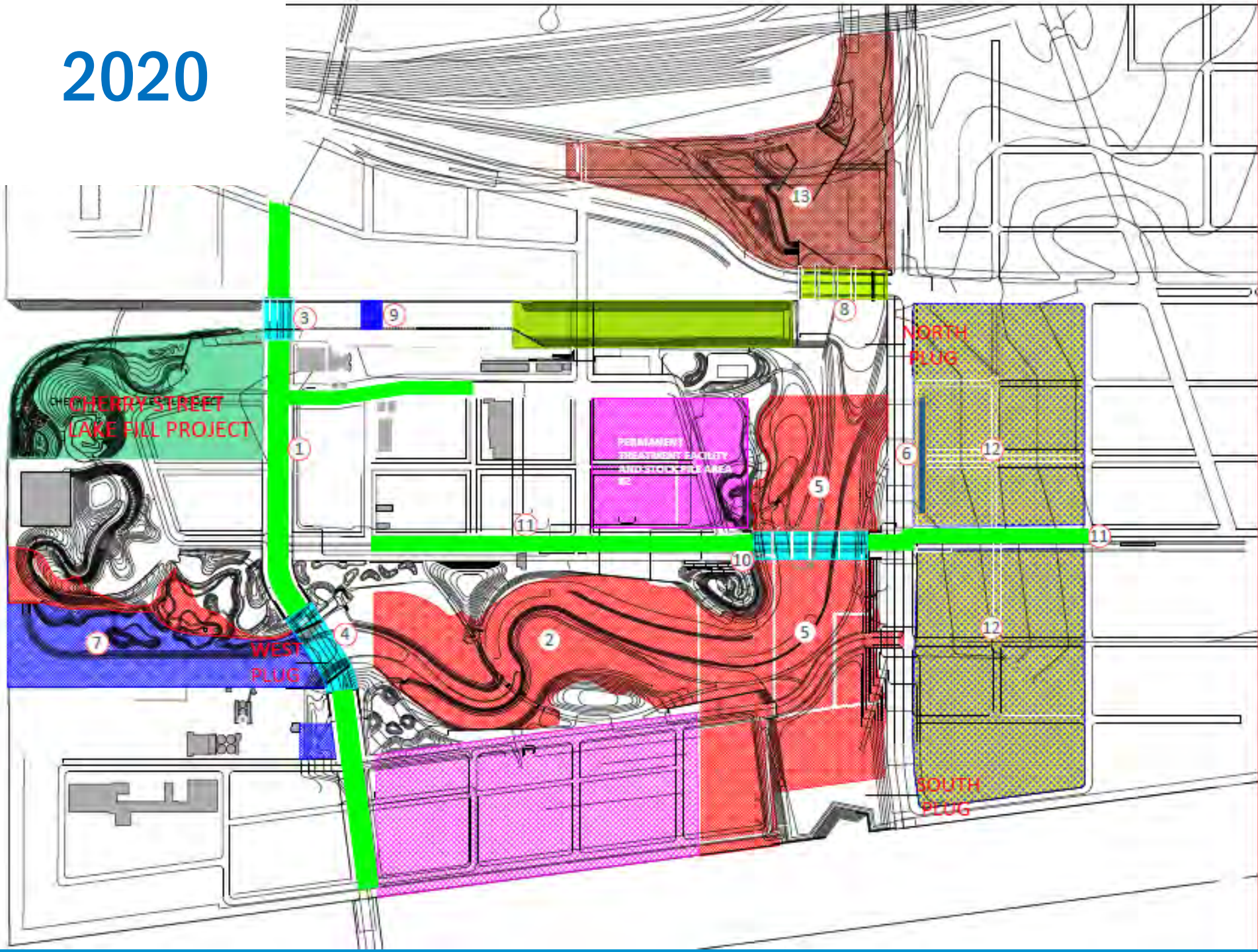


2019



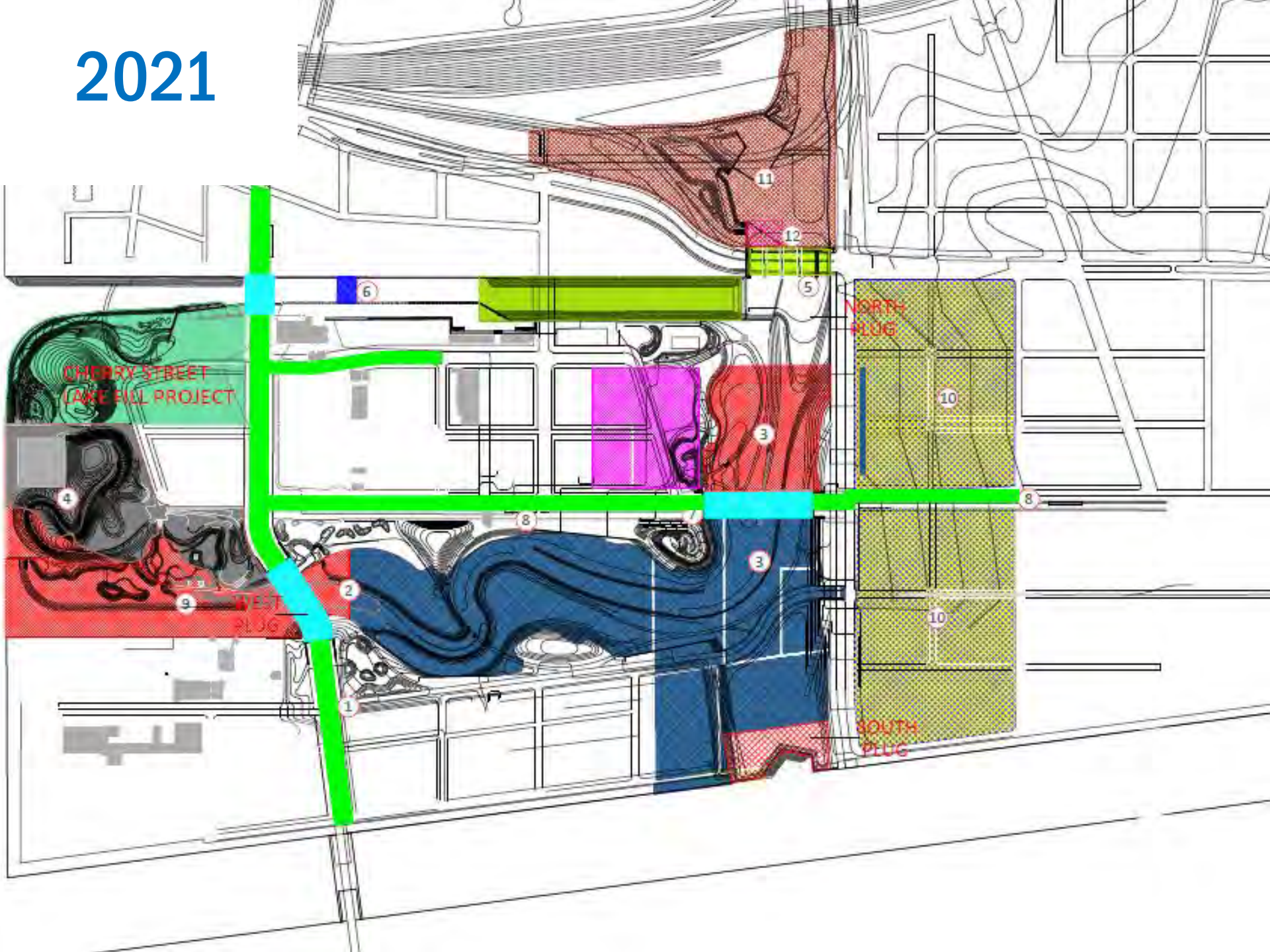


2020



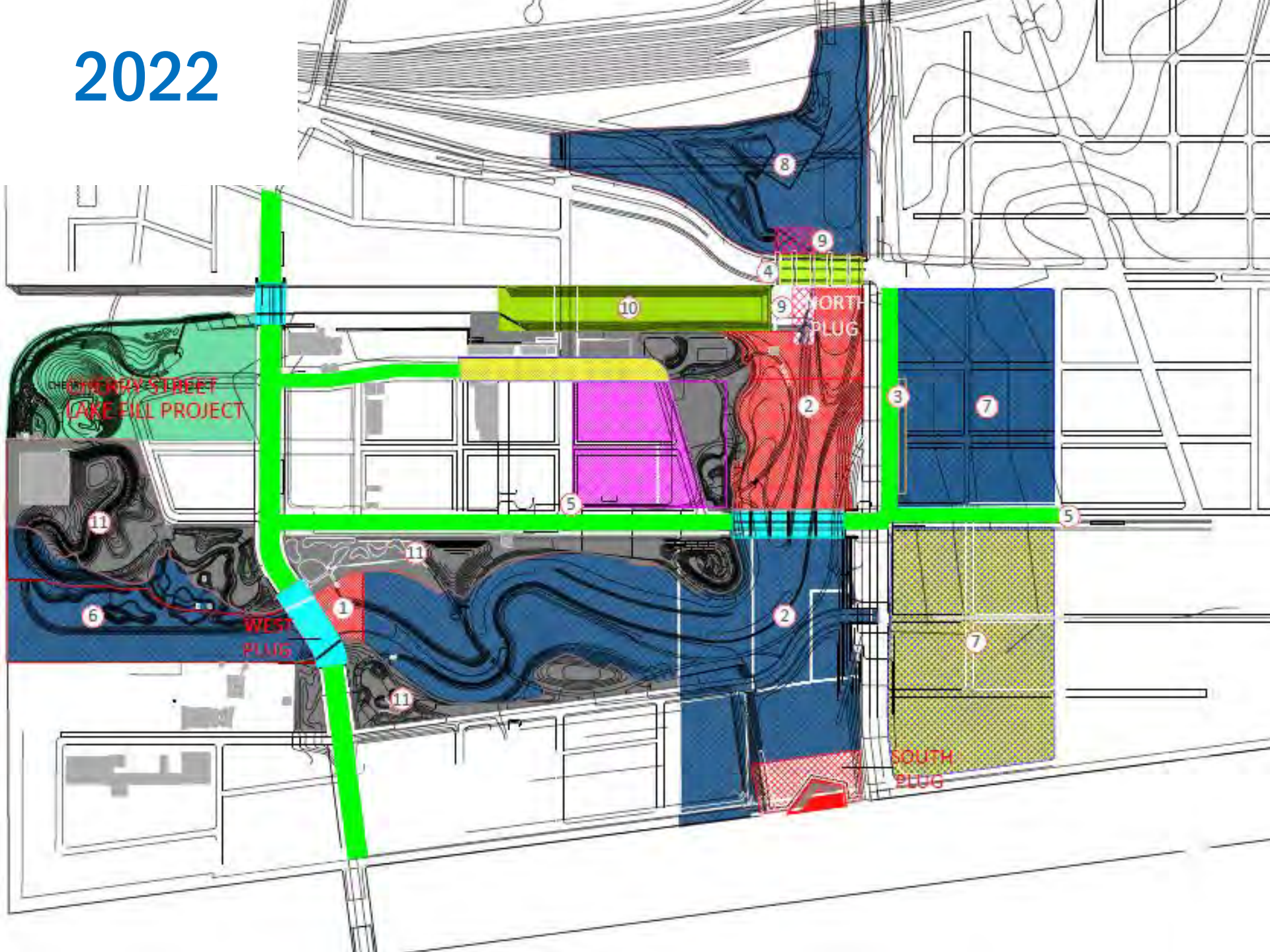


2021



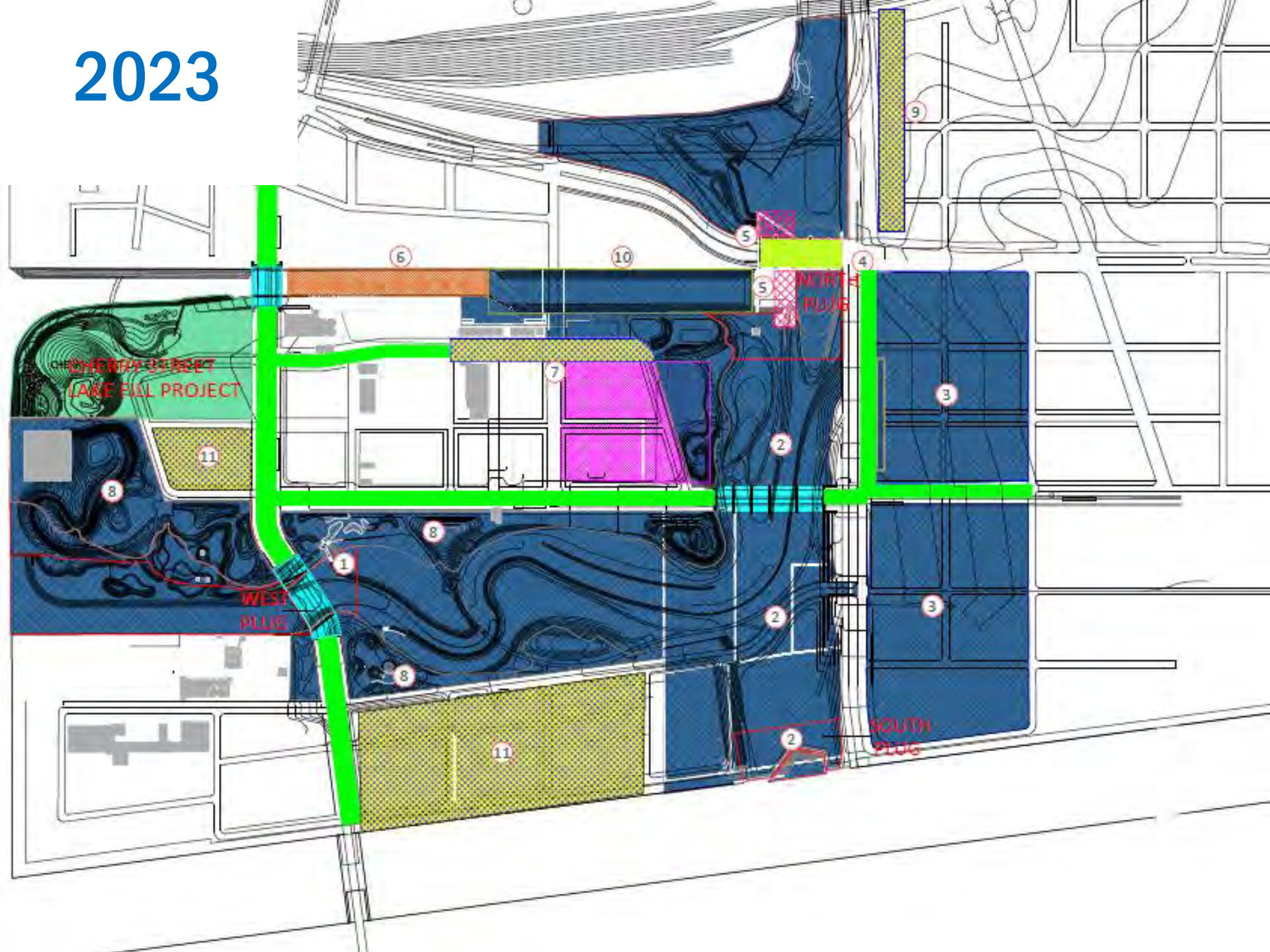


2022





2023



# Construction Impact Mitigation Plan



WATERFRONToronto



# Construction Impact Mitigation Plan



- The Don Mouth Naturalization and Flood Protection Environmental Assessment (DMNP EA) was approved by the Ministry of Environment and Climate Change in 2015
- The DMNP EA set plans for creating a healthier, more naturalized outlet for the Don River and flood protecting Toronto's eastern waterfront and identified potential construction impacts
- We are now developing plans to manage any potential impacts
- Details will emerge as we finalize our construction plan

# Construction Impact Mitigation Plan

What are some potential impacts we're planning for?

- Dust
- Odour
- Noise
- Vibration
- Traffic
- Sediment tracking
- Waste



# Construction Impact Mitigation Plan

## Noise and Vibration

### On-site measures:

- Maintain equipment in good condition
- Use mufflers on vehicles and equipment
- Idling limitation

### Monitoring:

- Noise and vibration levels can be monitored at key locations on the construction site



# Construction Impact Mitigation Plan

## Air-quality and dust

### On-site measures:

- Worker awareness
- Reduce idling
- Contain exposed soils
- Dust suppression

### Monitoring:

- Air quality can be monitored and tested to track dust and odour concentration



# Construction Impact Mitigation Plan

## Traffic

### On-site measures:

- Minimize traffic along access roads, creating staging area for trucks
- Plan strategically for lane and road closures, including visible signage
- Maintain access to nearby businesses and properties
- Maintain the Martin Goodman Trail

### Monitoring:

- Regular traffic inspections during any closures

# Construction Impact Mitigation Plan

## Communication

- Construction notices available to any member of the public
- Regular communication with Stakeholder Advisory Committee, Landowner and User Advisory Committee and Construction Liaison Committee
- Online form to collect public feedback
- Regular updates to project website
- Waterfront Toronto newsletter
- Social media

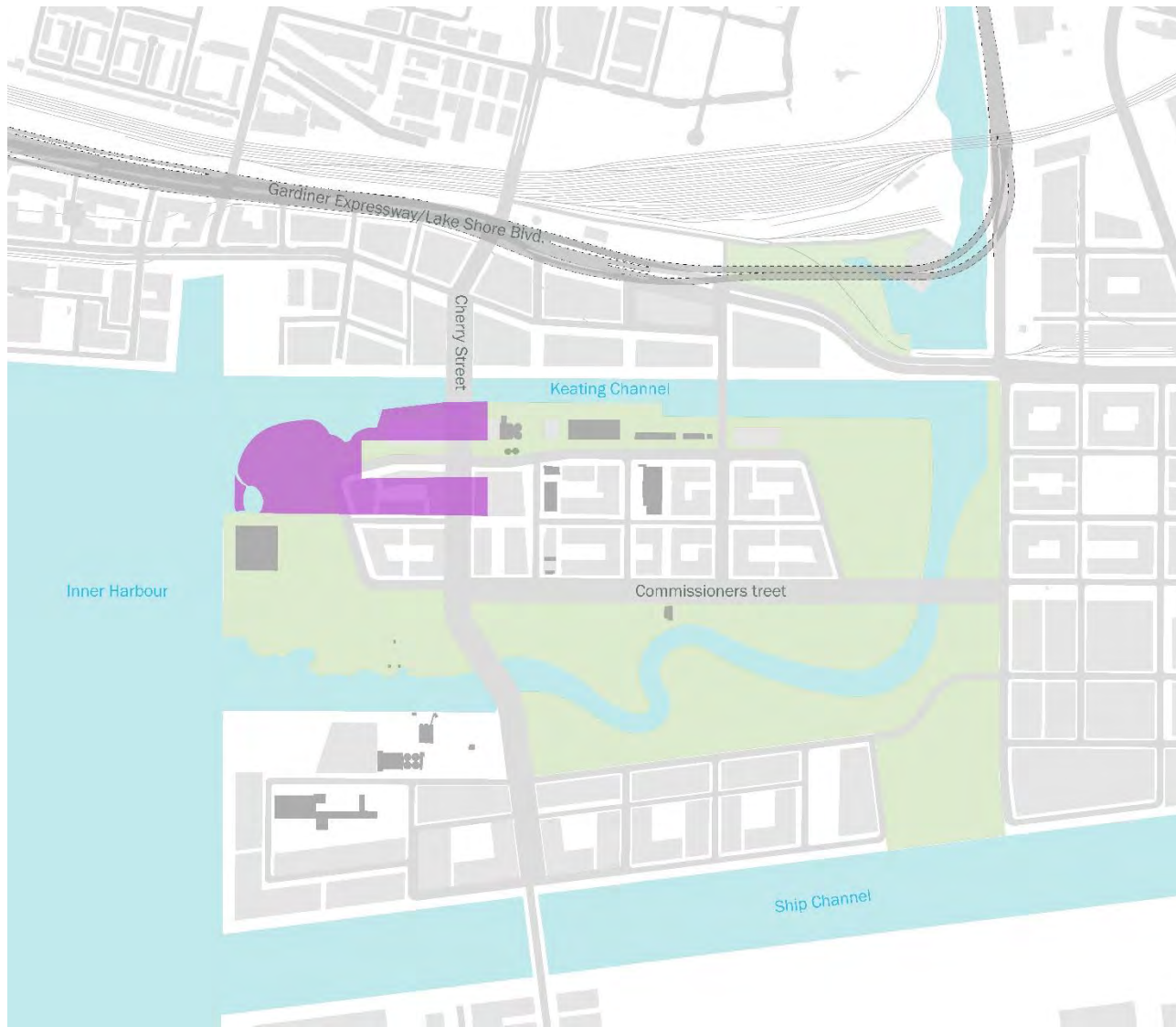
# Cherry Street Stormwater and Lakefilling



WATERFRONToronto

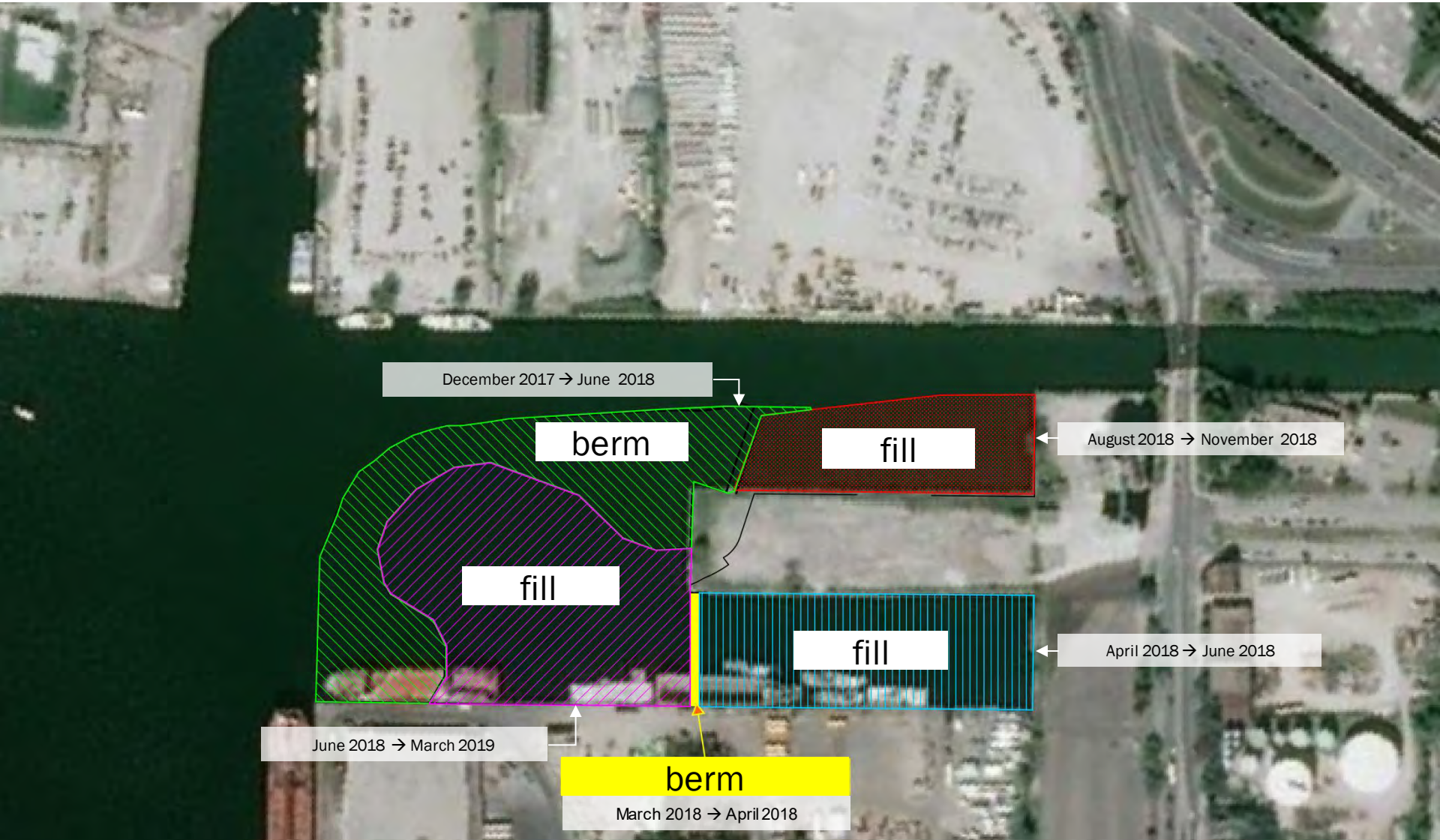


# Project Boundaries





# Construction Schedule

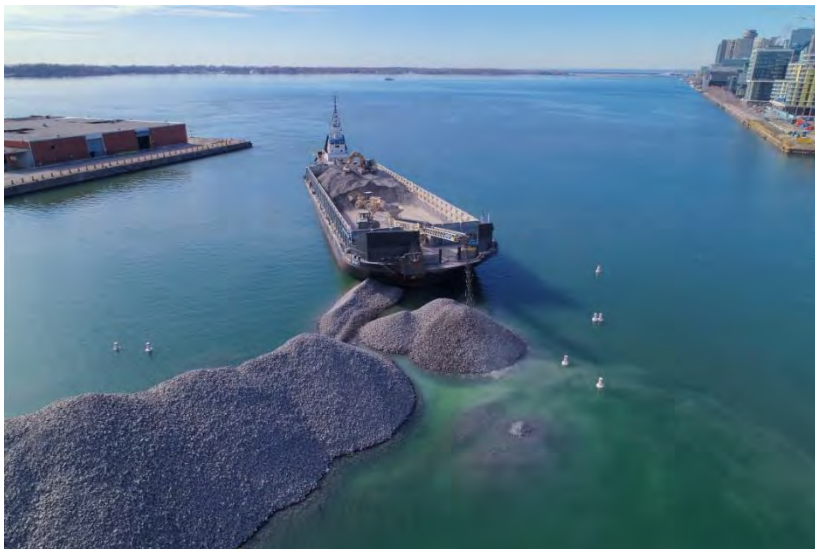


# Construction Update: Core Stone Barge Deliveries

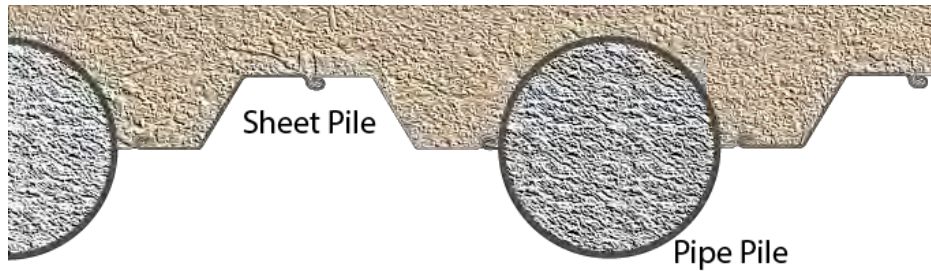




# Construction Update: Lakefilling & Inner Confinement Berm



# Upcoming Construction: Dock Wall





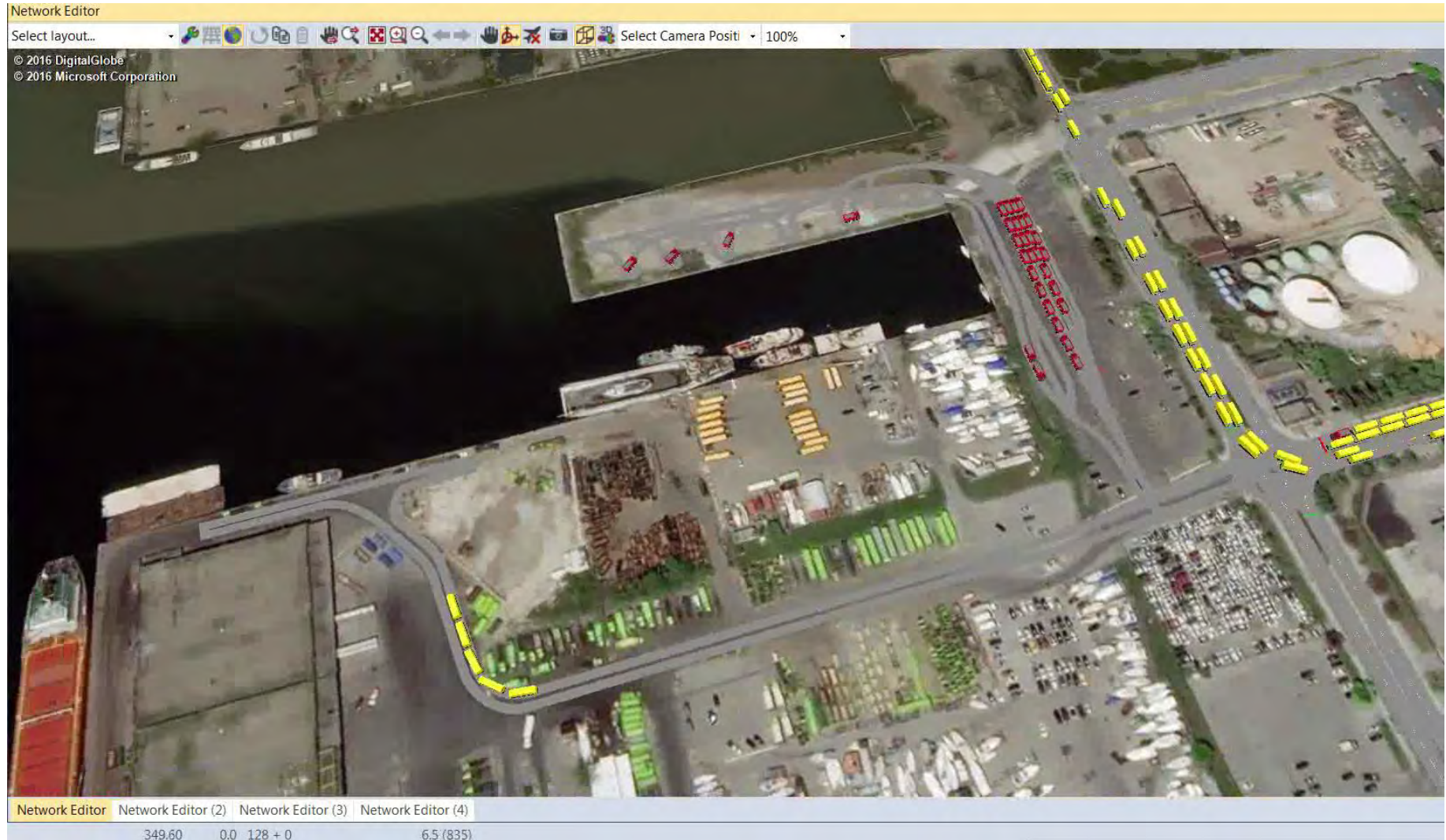
# Traffic Management Plan: Truck Route

## Truck Deliveries:

- April 2018 – March 2019
- Over 200 truck-loads / day
- Between 6:00AM-5:00PM
- Crews will aim to restrict deliveries during peak travel times
- Some deliveries may be unloaded during nights and weekends – will comply with City noise standards



# Traffic Management Plan: Analysis



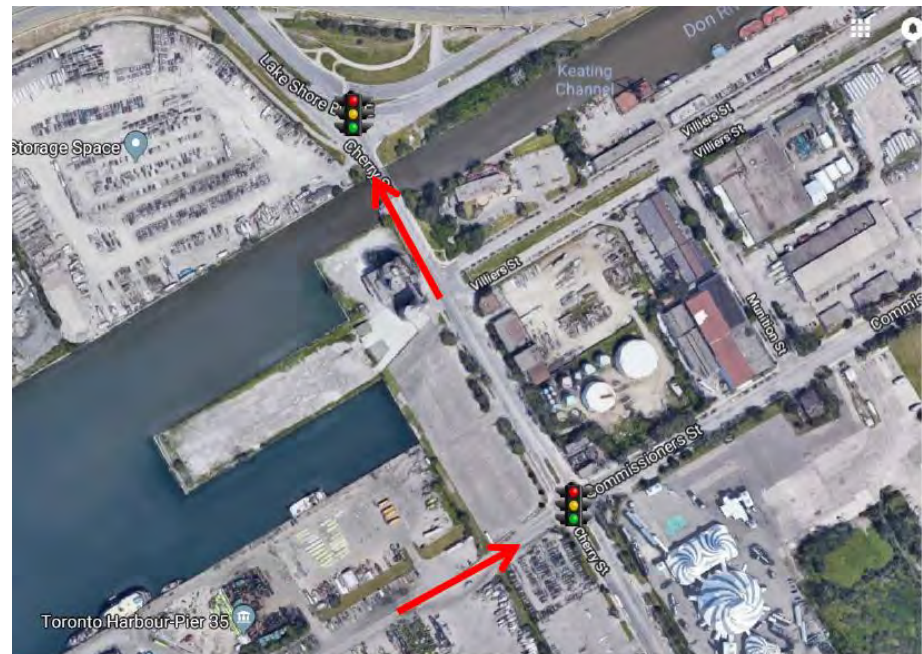


# Traffic Management Plan: Truck Staging



# Traffic Management Plan: Mitigating Impacts

- Construction notice to be issued April 13
- Trucks will not queue on Cherry or Commissioners Streets – they will proceed directly to a truck staging area within the site
- A traffic flagger will be placed at site access gate to direct delivery trucks
- Request pending to adjust traffic signal timing at Cherry / Lake Shore and Cherry / Commissioners





# Discussion and Feedback



WATERFRONToronto

## Join Us

Waterfront Toronto  
20 Bay Street, Suite 1310  
Toronto, ON M5J 2N8  
[www.waterfronttoronto.ca](http://www.waterfronttoronto.ca)



<https://www.youtube.com/user/WaterfrontToronto>



<https://www.facebook.com/WaterfrontToronto>



<https://www.linkedin.com/company/waterfront-toronto>



<https://twitter.com/WaterfrontTO>



WATERFRONToronto