

November 2020

Construction Notice #17: Port Lands Flood Protection



Construction manager



Traffic Notice

Road Closure: Cherry Street Between Lake Shore Boulevard East and Villiers Street, November 7 to November 9

For safety reasons to facilitate the installation of the Cherry Street North bridge, Cherry Street will be closed between Lakeshore Boulevard E and Villiers from Saturday, November 7 to Monday, November 9. This closure will be supported and controlled by paid duty officers.

The Martin Goodman Trail will remain open - redirected to the east side of Cherry Street. Cyclists and pedestrians will be discouraged from congregating within the road closure zone with support from the paid duty officers. There may be times when the trail is closed to allow construction vehicle movement, but this will be short term.

All TTC traffic will be allowed passage but may experience delays to allow for construction vehicle movement for the bridge installation.

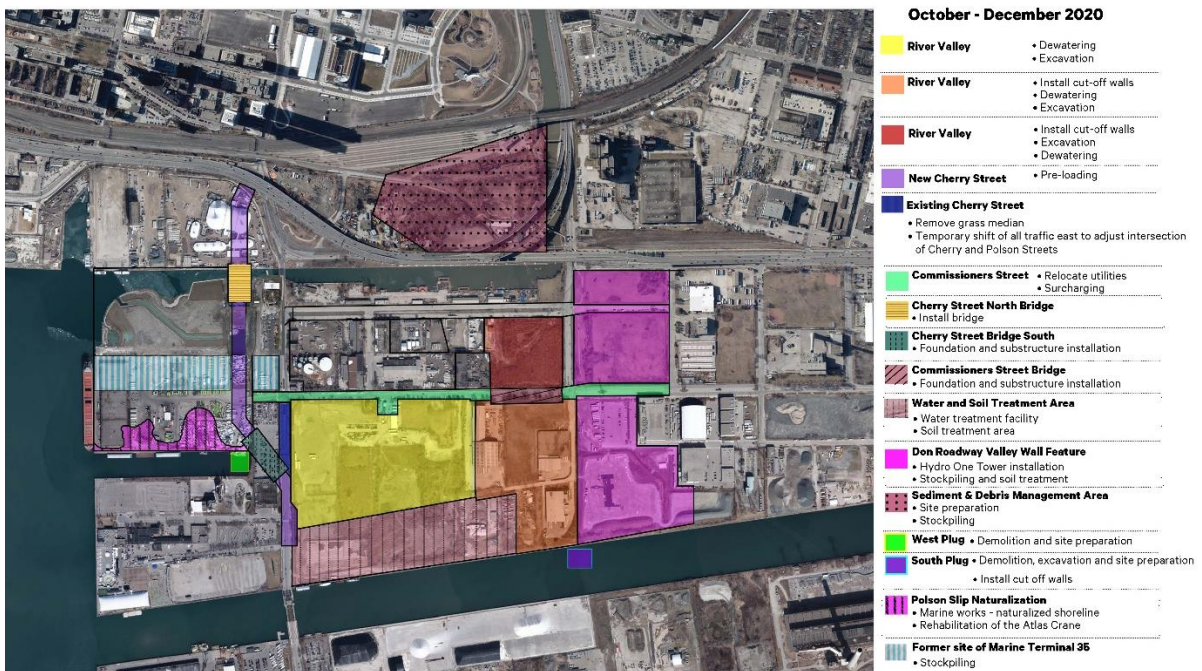


WHAT TO EXPECT



The recommended detour is to travel on Lake Shore Boulevard, Don Roadway, and Villiers Street.

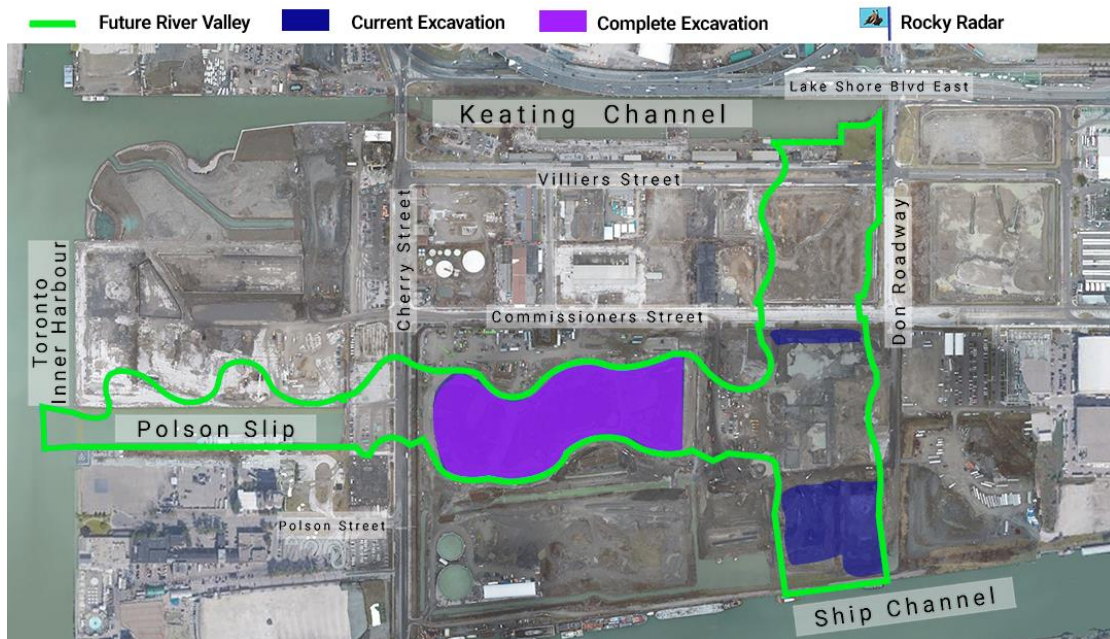
Construction Update



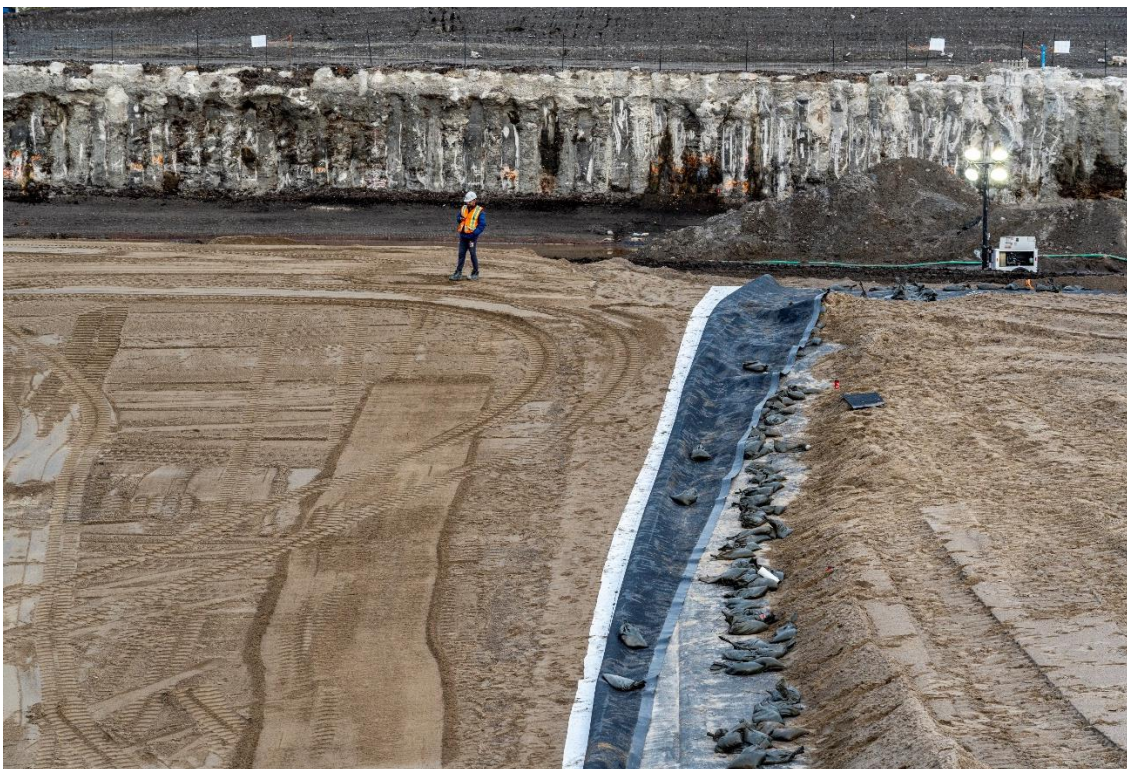
Click [here](#) to open a larger version of this map.

RIVER VALLEY

Excavation is 96% complete in the central section of river valley.



Above: Deep excavation in the central river valley is nearly complete. Crews have started deep excavation in the Don Greenway. Follow Rocky [@TheRockRipper](#) on Twitter for more updates as excavation continues.



Above: After areas have been excavated, a geomembrane and liner are installed to prevent any possible contaminants from leaching up into the new river.



Above: Deep excavation of the Don Greenway has started, north of the Ship Channel.

SOIL TREATMENT



Above: The combustion chambers of the StarX soil treatment system, which uses smoldering to treat polycyclic aromatic hydrocarbon compounds, creosote, and heavy oil. Smoldering is a flameless form of combustion using heat from reactions occurring on the surface of a solid or liquid fuel. This is an efficient process, powered by the contaminants themselves. There are four combustion chambers that will collectively treat approximately 1000 cubic metres of soil per week.

CHERRY STREET SOUTH BRIDGE FOUNDATIONS



Above: Crews are installing foundations for the Cherry Street South Bridge, which will bridge the new mouth of the Don River where it flows into the Polson Slip.

CHERRY STREET NORTH BRIDGE



Above: The first new bridge for the Port Lands travelled over 1200 km on the Atlantic Ocean and St. Lawrence Seaway to get to Toronto. It departed Dartmouth, Nova Scotia on October 29th. Learn more about the bridge and its journey [here](#).

Questions?

To learn more about this project, please visit PortLandsto.ca.

Use this [online form](#) to send us questions or concerns about construction or email us at plfp@ellisdon.com.

For urgent construction related issues, please contact Cameron Coleman, EllisDon, at 416-464-3583.

Waterfront Toronto

20 Bay Street, Suite 1310, Toronto, Ontario M5J 2N8

T. 416-214-1344 | waterfronttoronto.ca | info@waterfronttoronto.ca

