

September 2021



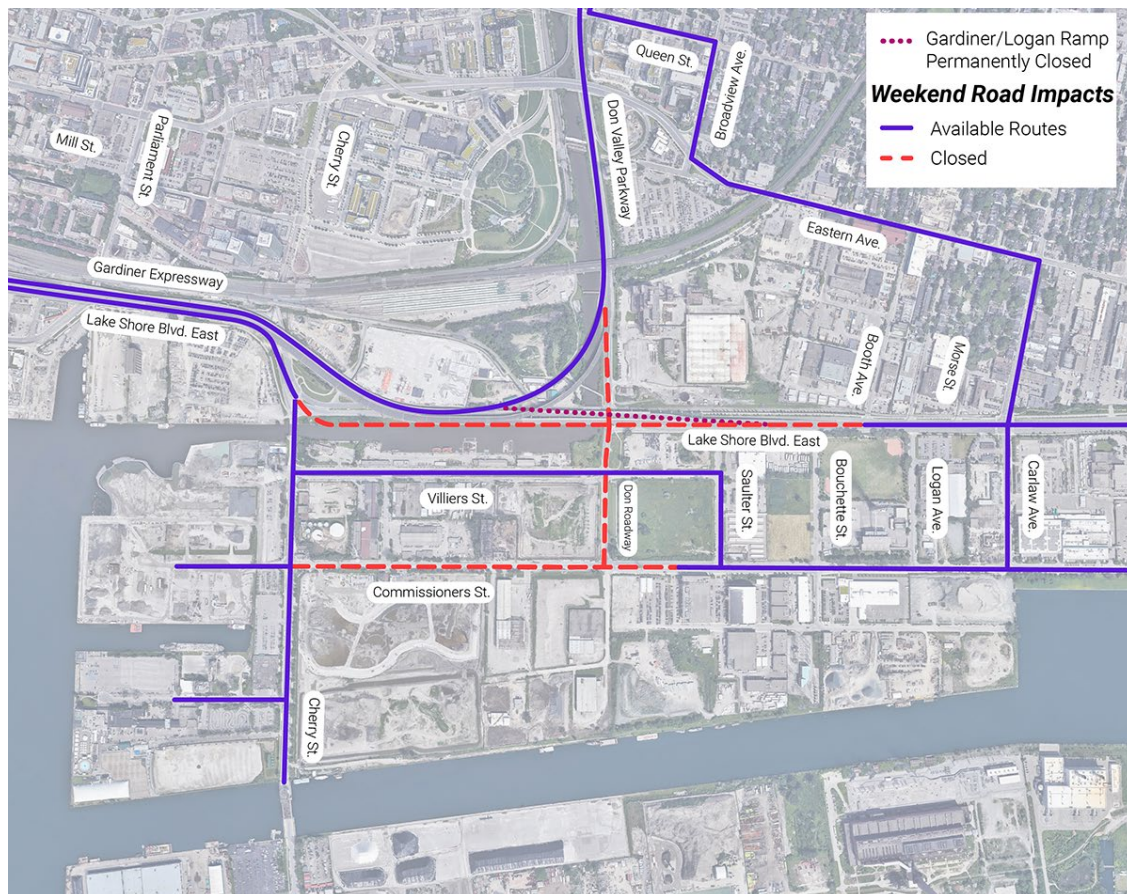
Construction Notice #21: Port Lands Flood Protection & Lake Shore Boulevard East

Construction manager



Traffic Notice

September 2021



Impacts to Roads

The Gardiner on/off ramps to Logan Avenue are now permanently closed. Ramp removal is

scheduled for weekends in September and October 2021. Once the Logan ramps are removed, the most eastern access point to and from the Gardiner Expressway will be at Jarvis Street. In the long-term, new ramps are planned at Cherry Street as part of the City of Toronto's Gardiner East project.

[Learn more about what we're building](#)

WHAT TO EXPECT

- **Weekends only** from September-October 2021: Lake Shore Boulevard East will be closed from Cherry Street to Booth Avenue (9p.m. Friday-6a.m. Monday).
- On weekends in September, Don Roadway will be closed between the Don Valley Parkway (DVP) and Commissioners Street. There will be no access to the DVP via Don Roadway during the weekend closures.
- As of October 1, 2021, Don Roadway will be closed from Lake Shore Boulevard to Commissioners Street on weekdays and weekends.
- Ramp removal involves concrete breaking/crushing. This type of work will happen only on weekends between the hours of 7 a.m. and 11 p.m. For more details on noise and dust, please read this: [Managing Construction Impacts](#). If you have a complaint relating to noise or dust, you can submit it using this [online form](#).

Drivers should note when planning routes that there are additional closures related to nearby works on other projects.

Impacts to Cycling Routes

- **Weekends only**, the Lower Don Trail will be closed from where it crosses the Don River at Lake Shore Boulevard to Booth Avenue.
- **Weekdays** until September 30, 2021, the Lower Don Trail over the Don River and the cycling facility on Lake Shore Boulevard will be open. The section of Lower Don Trail running south of Wilson Yard will be closed as of November 2021.

WHAT TO EXPECT: WEEKENDS

- Cyclists travelling south on the Lower Don Trail from Corktown Common will be directed to continue west along the trail that runs south of the Wilson Train Yard and connects to Cherry Street.

- Cyclists wishing to cross the Don River will be directed to cycling facilities on Cherry Street, Villiers Street, Saulter Street, Commissioners Street and Carlaw Avenue.
- Cyclists travelling south along Logan Avenue can take Lake Shore Boulevard to Carlaw Avenue, take that new detour route south to Villiers Street and continue west.

Construction Update

Lake Shore Boulevard



Above: Crews made significant progress in the first weekend of work to remove the Logan Ramps from the Gardiner to Lake Shore. Looking west from Lake Shore, you can see where the deck has been removed.



Above: Looking north at the bend in the Don River where it meets the Keating Channel, you can see the road has been removed from the Logan ramps across the Don River. Once the overhead structure is gone, crews can safely widen the mouth of the Don in order to achieve flood protection.

With our first weekend of ramp removal complete, 95% of the decking from the Gardiner Expressway ramps to Logan Avenue have been removed and bent 337 was also demolished. This weekend, crews will continue work removing girders and bents.

Port Lands Flood Protection

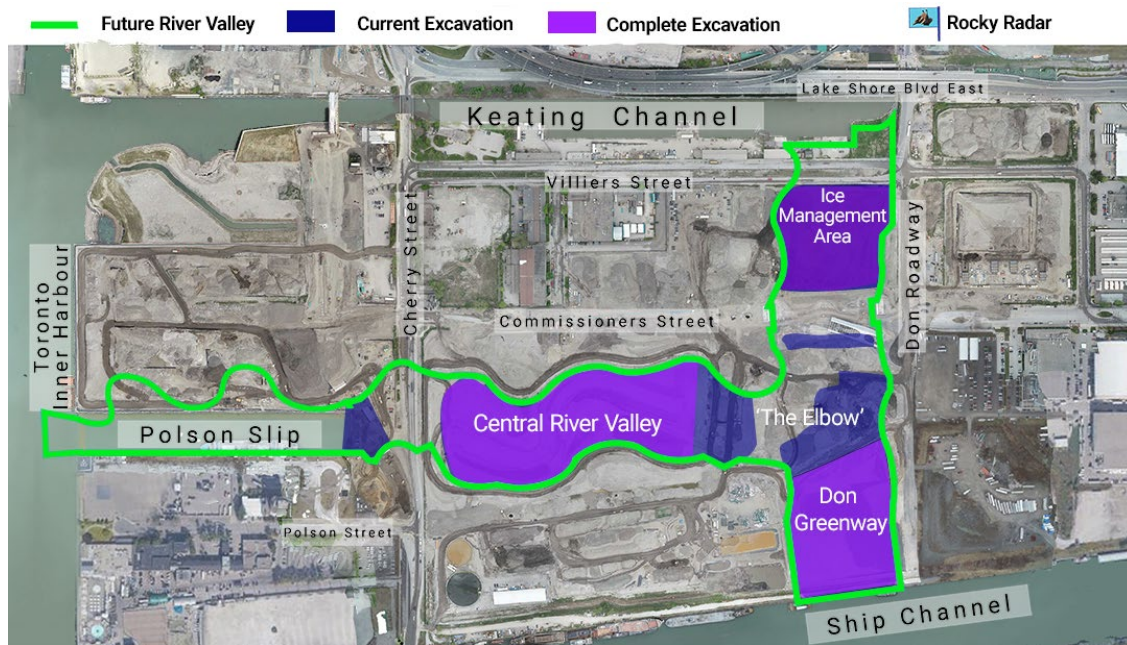
Check out the [latest video](#) showing progress across the entire site.



Above: The eastern half of the Commissioners Street Bridge arrived in late August 2021 and sits with the western half waiting to be joined together.

Crews are working to install the second half of the Commissioners Street Bridge, which joined its twin last month after arriving from Halifax by barge. The bridge is being installed over ground, after which we will excavate the river valley below.

Rocky Radar



August 26, 2021

@TheRockRipper

Excavation is complete in the Ice Management Area and Don Greenway. In the central river valley, crews are placing harvested trees and rootwads to reinforce the riverbed.

Questions?

To learn more about this project, please visit PortLandsto.ca.

Use this [online form](#) to send us questions or concerns about construction or email us at plfp@ellisdon.com.

For urgent construction related issues, please contact Cameron Coleman, EllisDon, at 416-464-3583.

Waterfront Toronto

20 Bay Street, Suite 1310, Toronto, Ontario M5J 2N8

T. 416-214-1344 | waterfronttoronto.ca | info@waterfronttoronto.ca

