

# WHY FLOOD PROTECTION?

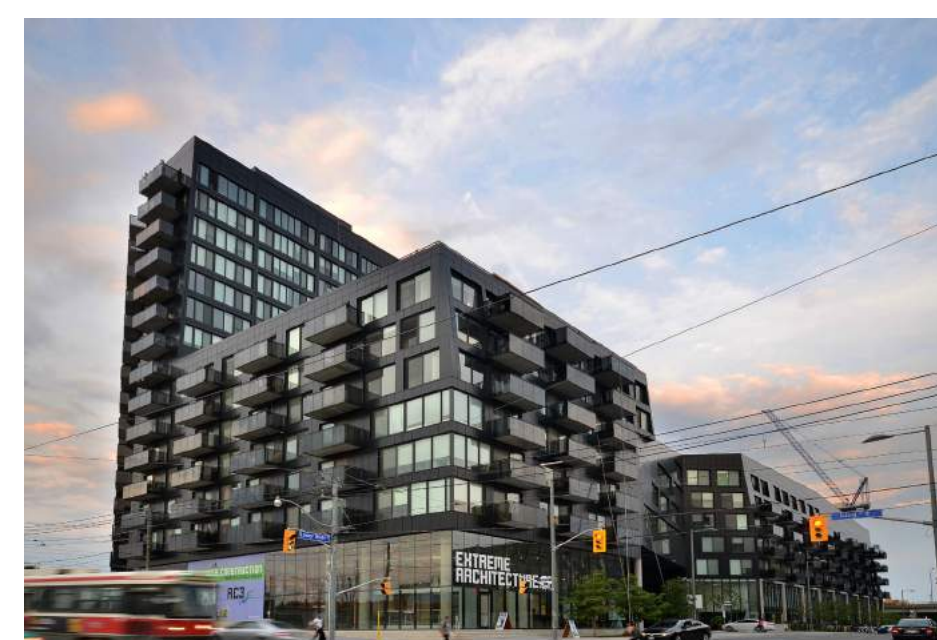


## West Don Lands Flood Protection

This recently completed flood protection landform now protects 210 hectares (519 acres) of eastern downtown Toronto and enabled the emergence of the new West Don Lands community.



Corktown Common



River City Phase I



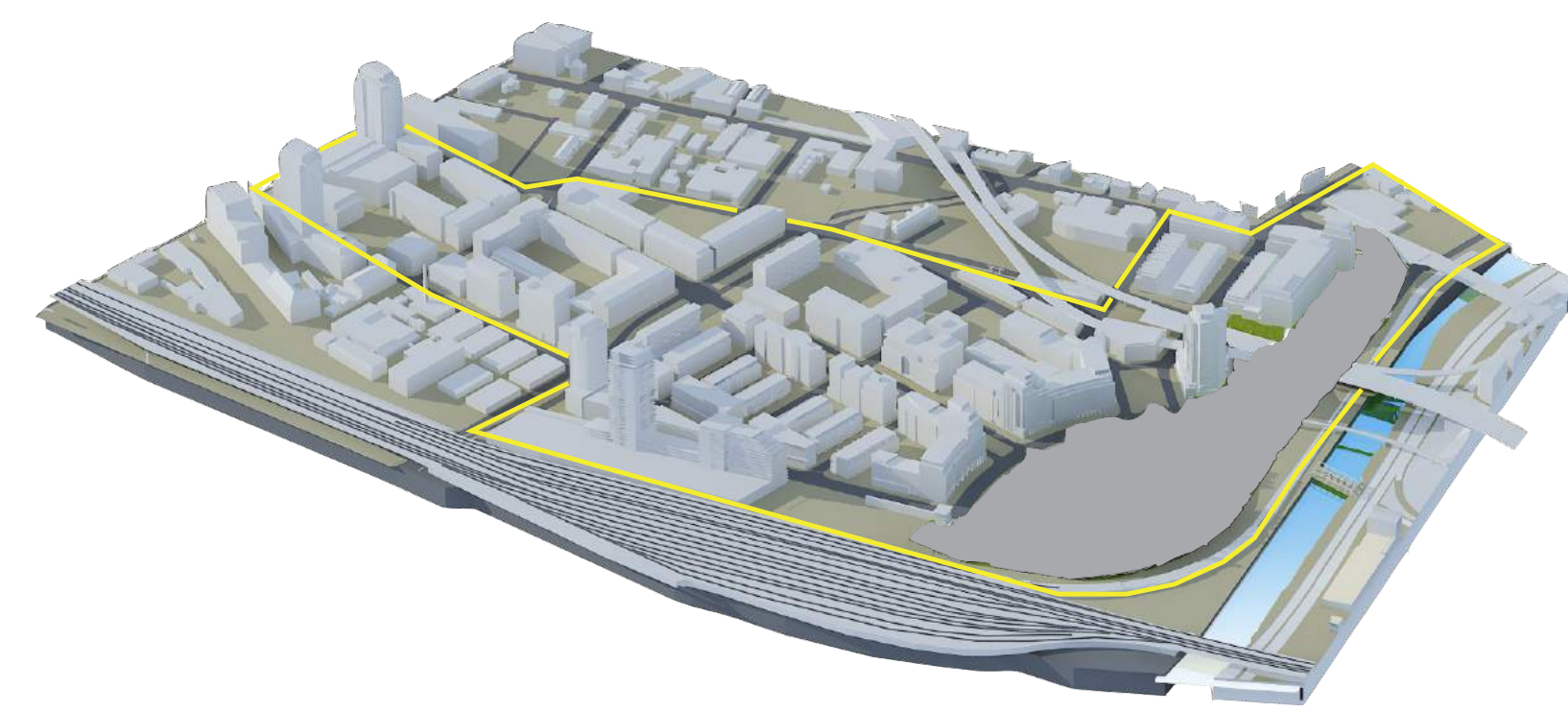
Canary District



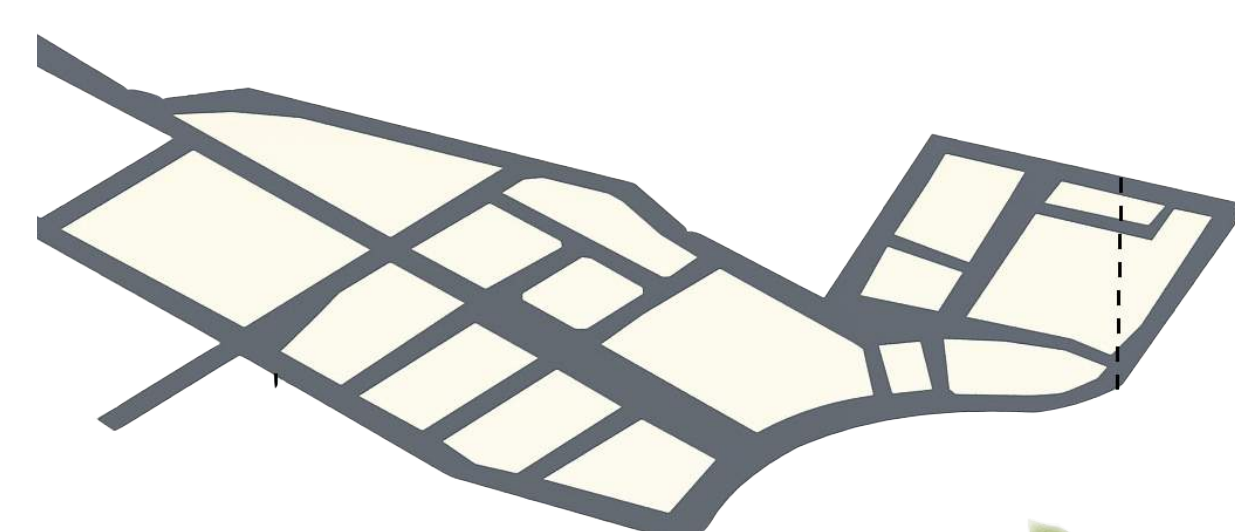
Corktown Common Playground



Front Street Promenade



West Don Lands Full Build-out



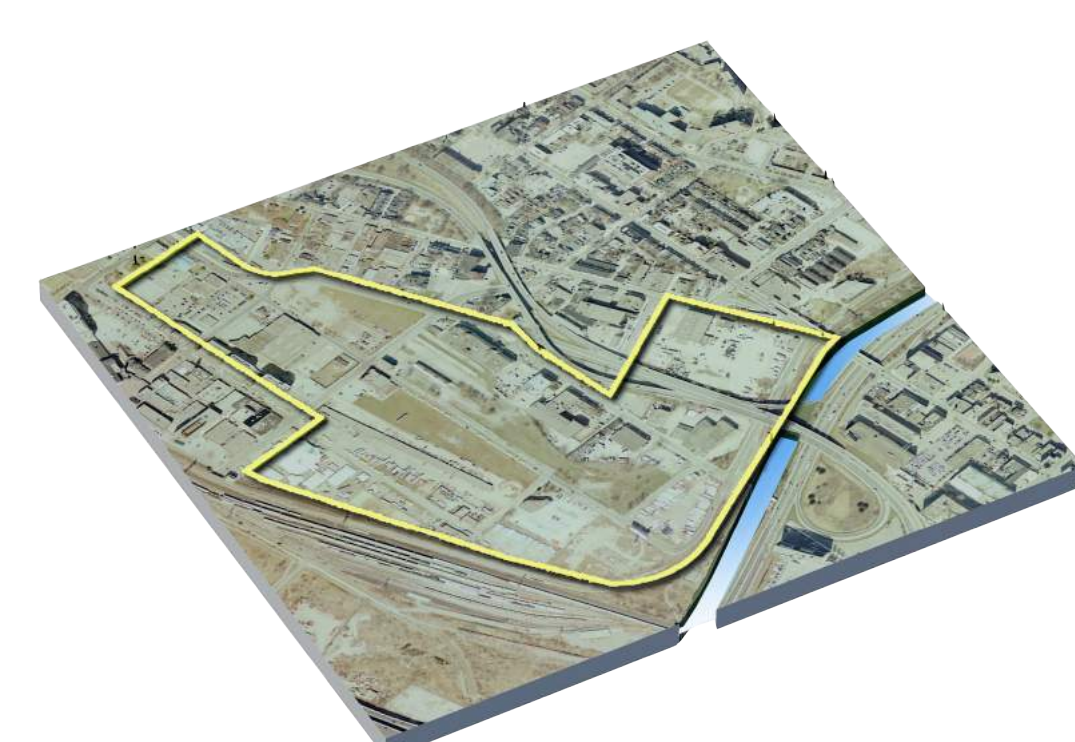
Roads and Infrastructure



Park



Flood Protection Landform



Original Site

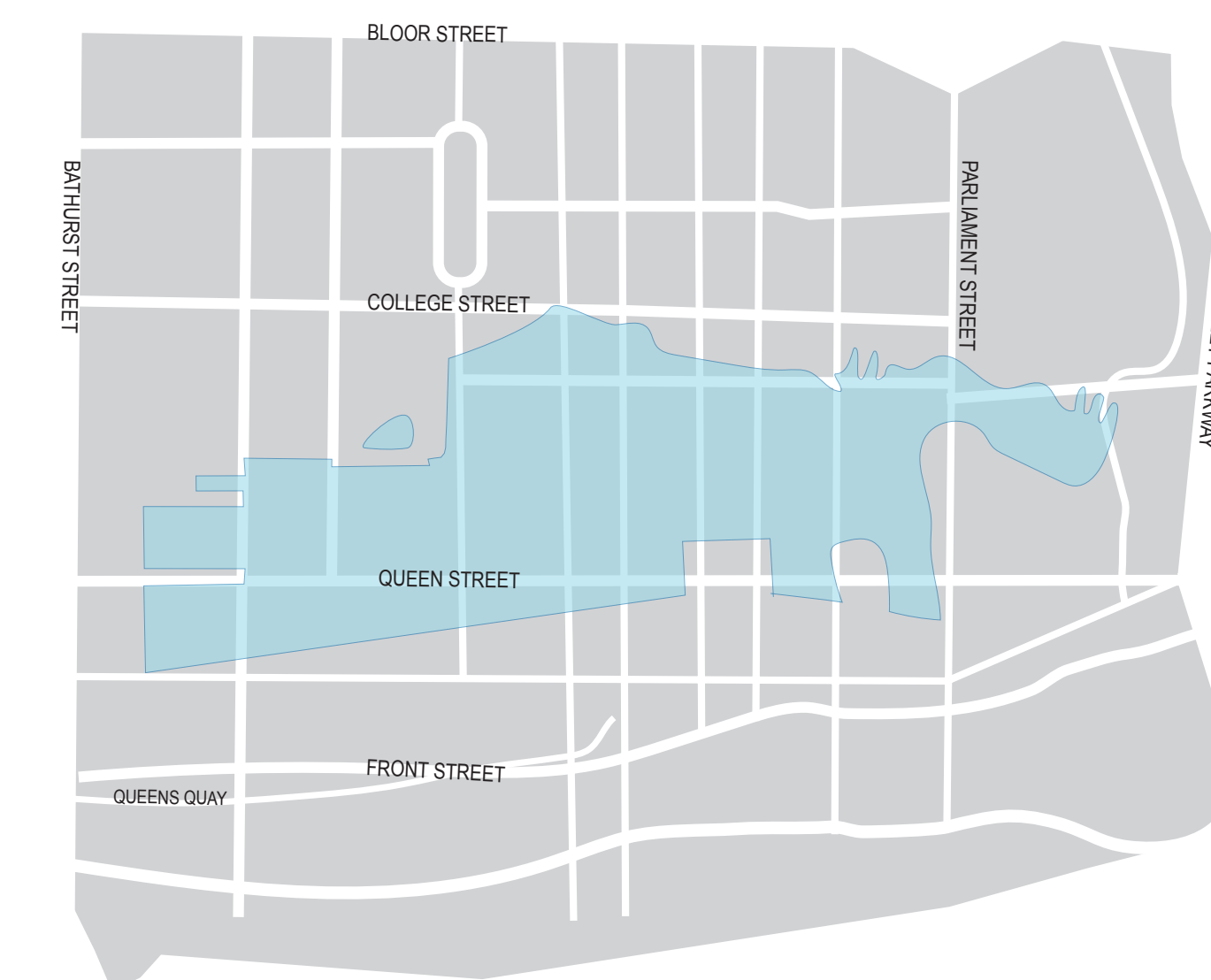
## Port Lands Flood Protection

Currently, about 290 hectares (715 acres) of eastern downtown Toronto – including the First Gulf/Unilever development site – are at risk of flooding from the Don River watershed and cannot be revitalized until they are flood protected.

### Scale Comparisons



Area currently at risk of flooding that will be protected after the completion of this project (290 ha)



Downtown Toronto (1,445 ha)



High Park, Toronto (165 ha)



Toronto Islands (332 ha)

### Unlocking 290 Hectares for Revitalization



First Gulf/Unilever Site



Villiers Island



Keating Channel