

# PORT LANDS FLOOD PROTECTION

Port Lands Flood Protection Construction Liaison Committee Meeting #7

July 4, 2019



# Agenda

1. Introductions
2. Construction Update: Cherry Street Stormwater and Lakefilling
3. Construction Update: Port Lands Flood Protection
4. Overview: Inner Port Lands Area Roads Construction
5. Discussion and Feedback

# Project Overview

# Port Lands Flood Protection - 2024







September 2018



June 2019





Future River Valley

# Construction Update: Cherry Street Stormwater and Lakefilling



# Ongoing Construction: New Cherry Street Alignment





# Ongoing Construction: Lakefilling





# Ongoing Construction: Marine Landscaping (Forming Habitats and Shoreline)

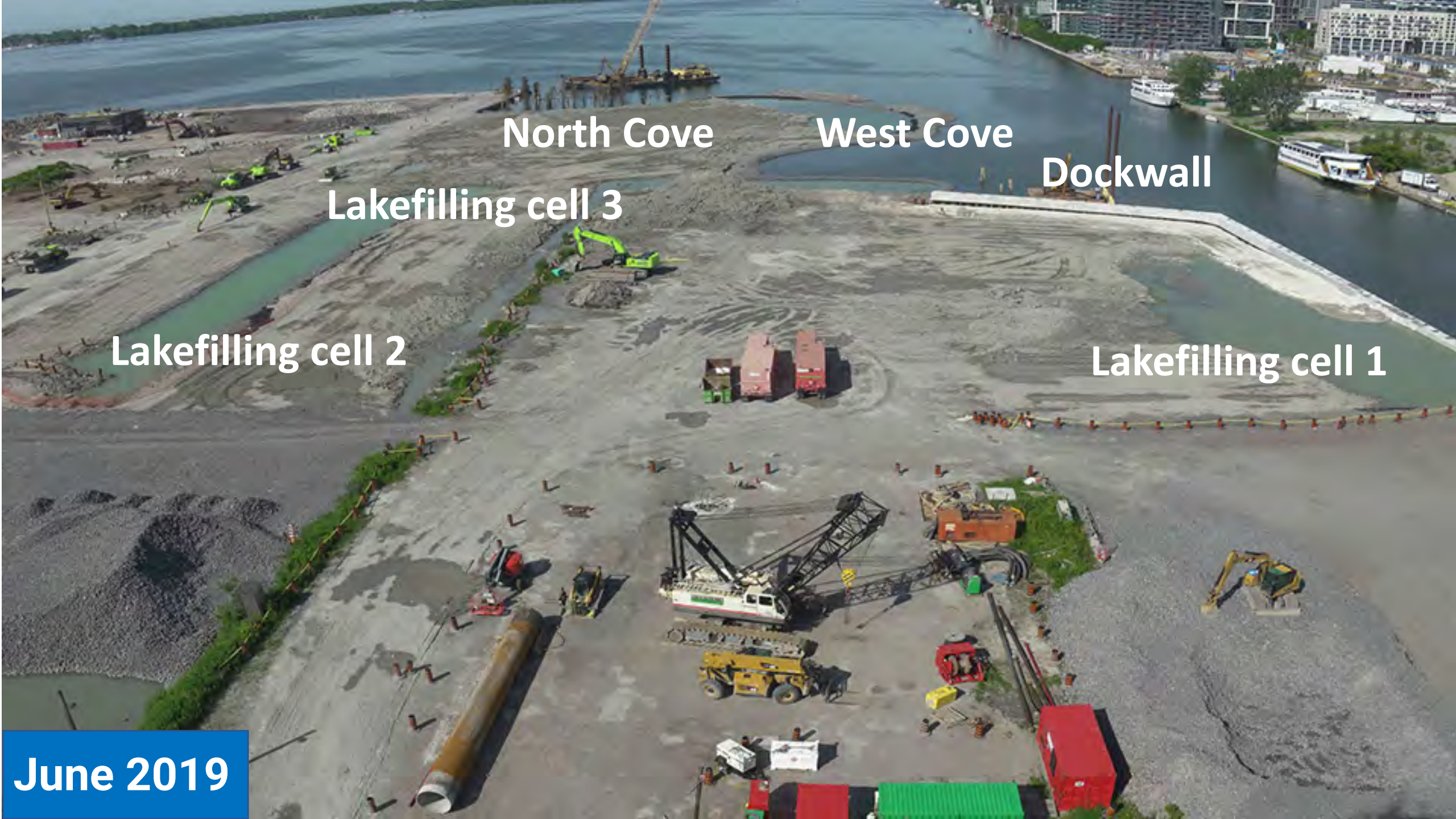




# Ongoing Construction: Marine Terminal 35 Demolition and Material Salvage







North Cove

West Cove

Dockwall

Lakefilling cell 3

Lakefilling cell 1

Lakefilling cell 2

June 2019

# Construction Update: Port Lands Flood Protection





June 2019

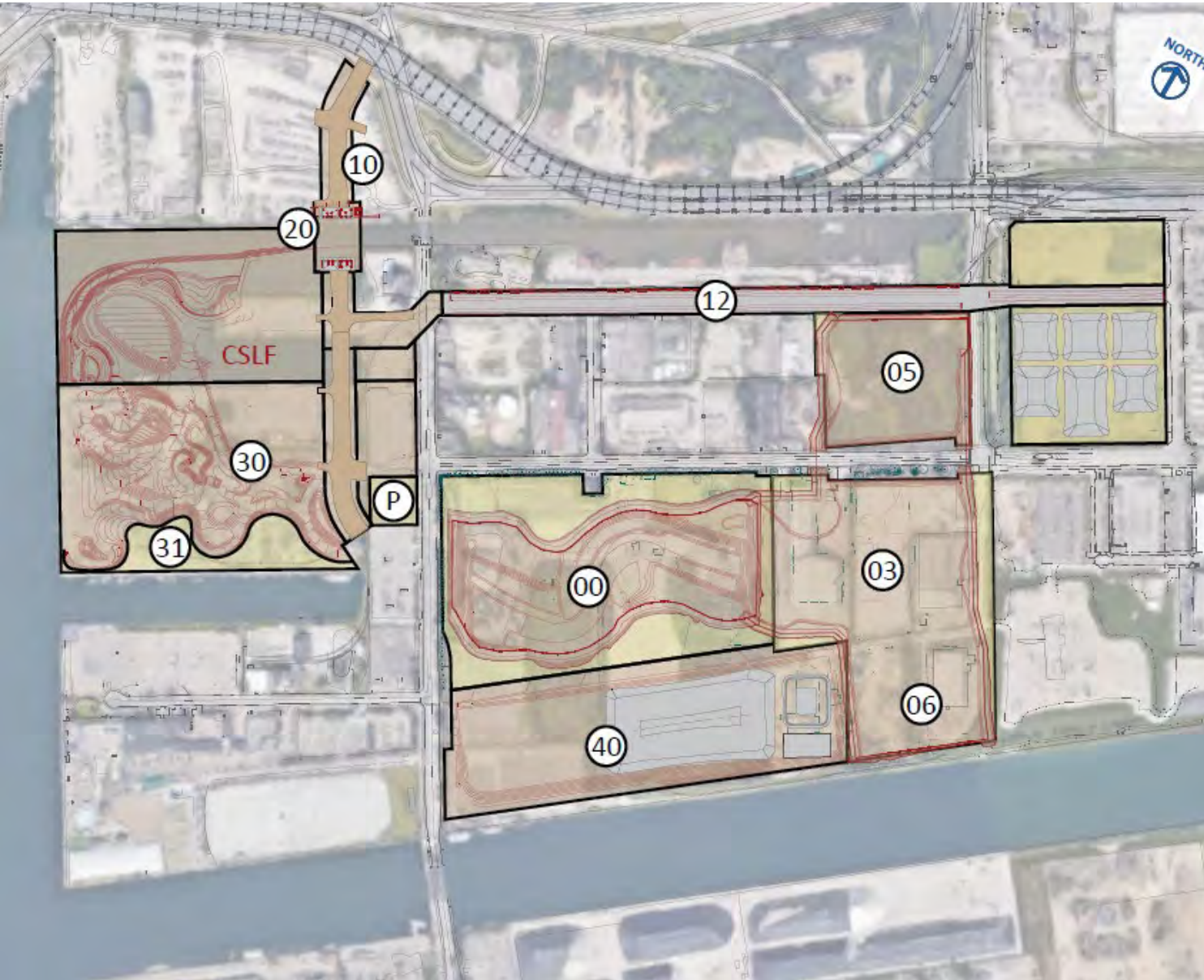


# Ongoing Work: Excavation





# Upcoming Construction: July to September 2019



## AREA 10

- Cherry Street realignment: demolition, site preparation

## AREA 20

- New Cherry Street Bridge - Bridge sub-structure & Foundation

## AREA 30

- Demolition: parking lots, buildings
- Site preparation

## AREA 40

- Stockpiling of soil and soil treatment facility

## AREA 00

- Cut-off wall – Caisson drilling
- Excavation

## AREA 03, 05 & 06

- Site preparation, demolition
- Excavation
- Environmental controls

## AREA 12

- Road modifications and improvements

## MONITORING (SITE-WIDE):

- Air, dust, noise, odour, weather
- Turbidity
- Surface-water quality
- Vibration
- Soil and groundwater



# Traffic Management Plan – Inner Port Lands Area

# Final Street Configuration



# Three Distinct Streets for the Port Lands

## Cherry Street

An Urban Gateway to the Port Lands



A View Looking Southwest, on East Side of New Cherry Street



- 1 Sidewalk (min 30' w)
- 2 Social Spaces
- 3 Open green spaces with vibrant urban landscape planning. The planter is one component of the green infrastructure
- 4 Dedicated Transit Lane

B View Looking East of New Cherry Street

## Commissioners Street

The Park Edge



C View Looking West on North Side of Commissioners Street



- 1 Active and urban edge on the north side responding to future development
- 2 A green green edge and related character for the south side responds to the park's character and programming
- 3 Sidewalk (min 30' w)
- 4 Greenway
- 5 Mid-block crossing
- 6 Dedicated Transit Lane
- 7 Vehicle bay by

D View Looking South of Commissioners Street

## Don Roadway

The River Edge



E View Looking South on West Side of Don Roadway



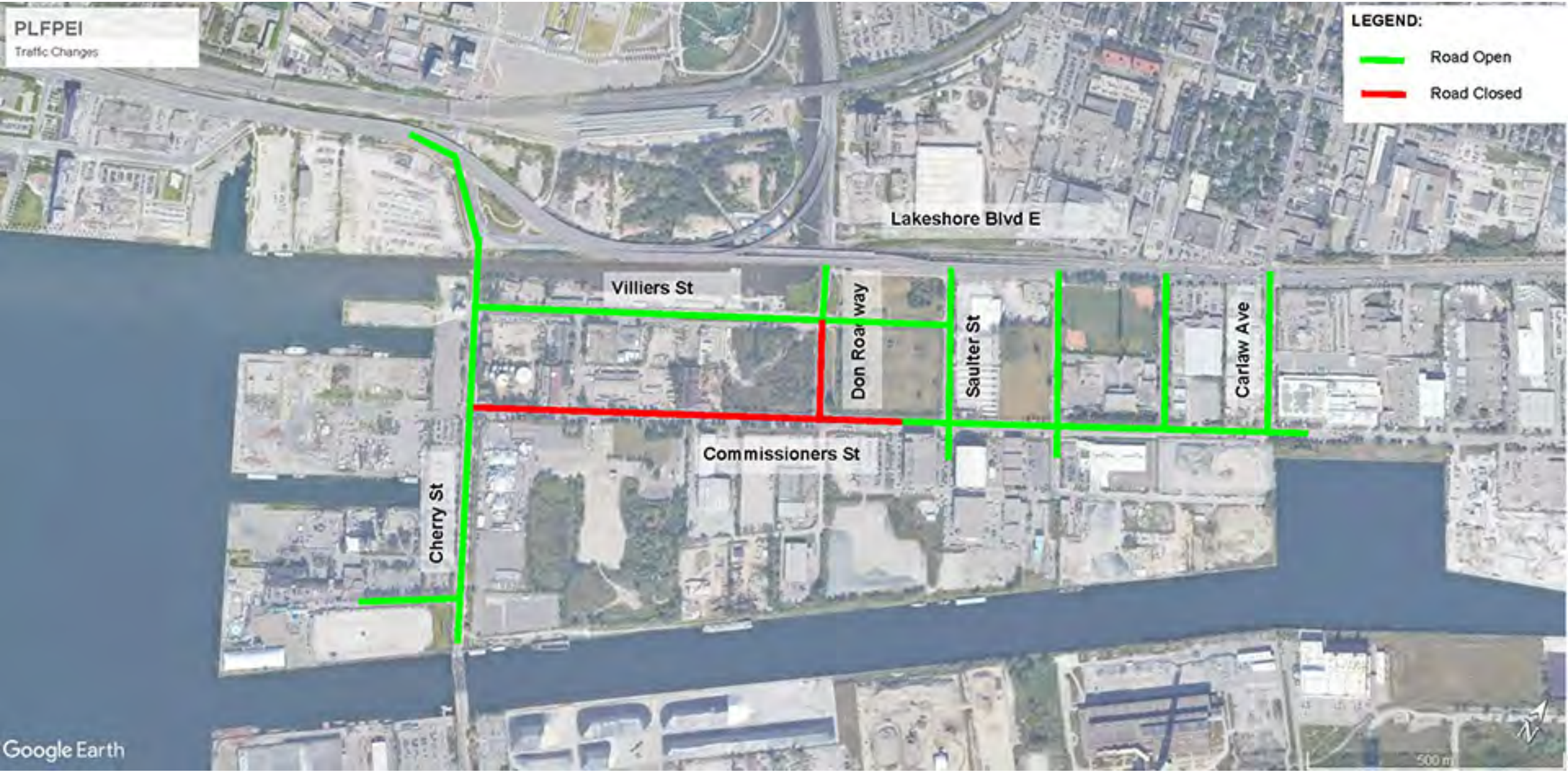
- 1 Lower Don River Trail (20' w)
- 2 Sidewalk (min 22' w)
- 3 Planted Boulevard. Planting inspired by the river ecology
- 4 Testing/Viewing Area
- 5 Temporary Landscaping
- 6 Reclaimed and repurposed railway tracks
- 7 Hydroelectric Transmission Conduit
- 8 Future Connection to New East West Street
- 9 Connection to Park

F View Looking East of Don Roadway



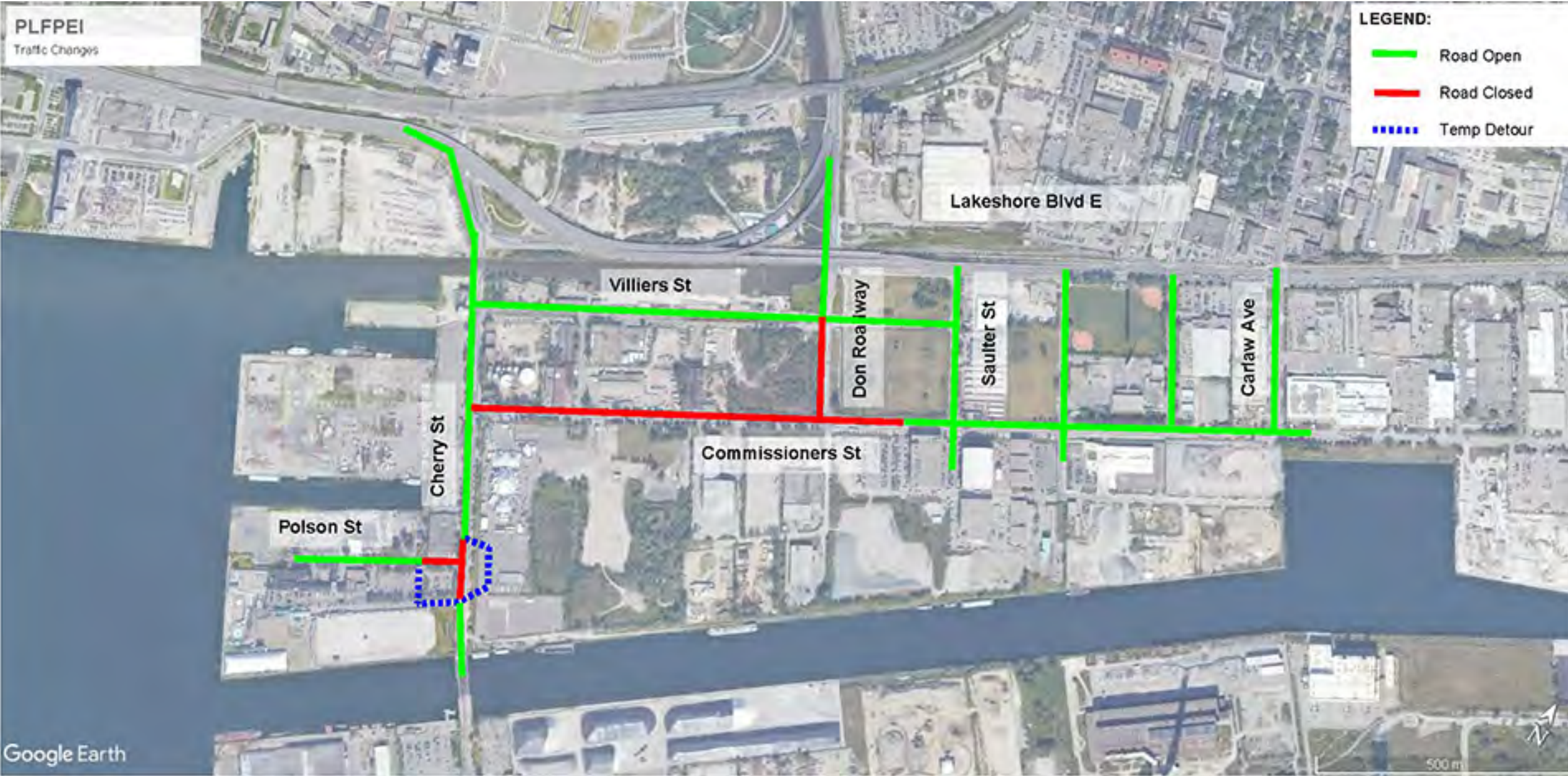
# Traffic Plan

# Traffic Plan: Q4 -2019



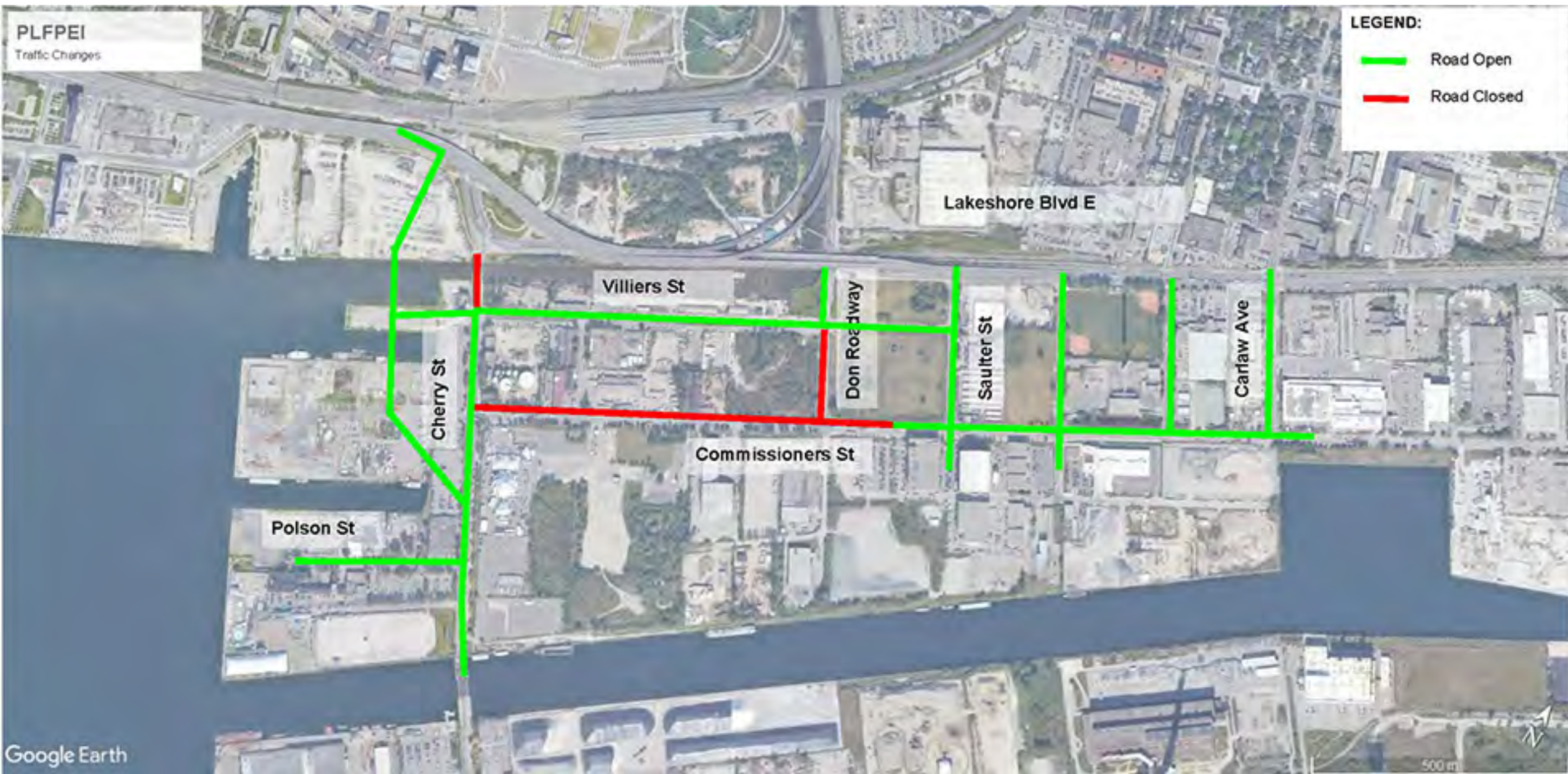


# Traffic Plan: Q1 -2020





# Traffic Plan: Q4 -2021





# Traffic Plan: Q2 -2022



# Discussion and Feedback